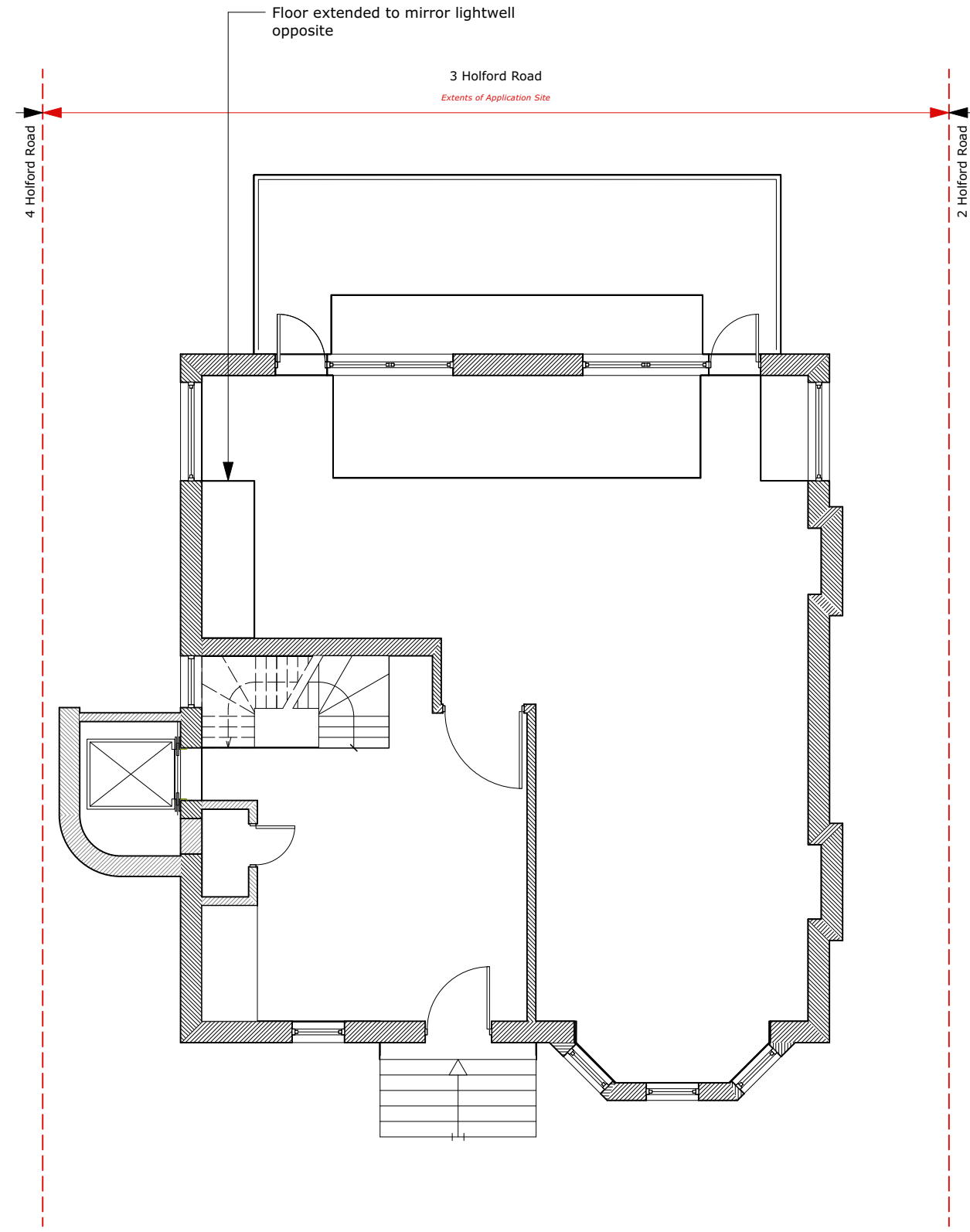
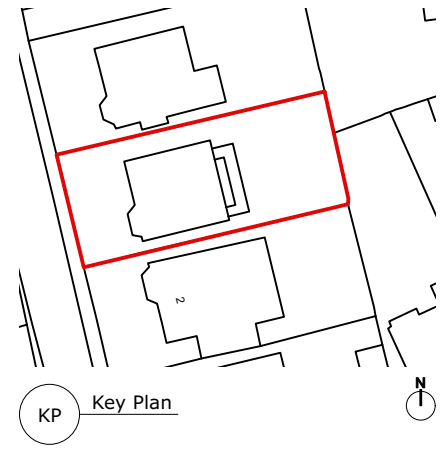


LG Proposed Lower Ground Floor Plan



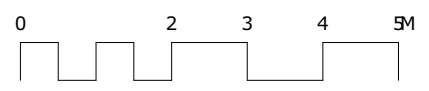
00 Proposed Ground Floor Plan



Existing plan drawings as per the construction drawings of Zac Monro Architects, January 2010.

Existing elevation drawings as per 2015/2443/P by 800 Group

Elevator designed to specification from "Otis Gen2 Life" product range. Actual dimensions to be confirmed by manufacturer.



P2 18/02/2021 JB Annotation update
revisions:
All dimensions and areas are approximate and are to be verified.

Purpose of Issue:
For Planning

NORTON
MAYFIELD
ARCHITECTS

Holford Works, Unit 8
70 Judd Street
Sheffield
S1 2JZ
Tel: 0114 270 0514
Sheffield & London
www.nortonmayfield.co.uk

Client:

Project:
**3 Holford Road, Hampstead,
London, NW3 1AD**

Drawing No:
2063-NMA-00-ZZ-DR-A-00100

Drawing Title:
Lower Ground and Ground Floor Plans

Proposed

Status:	Rev:	Scale:
S2	P2	1:50@A1 1:100@A3

2063-NMA-XX-ZZ-AN3-B-00001.VBK