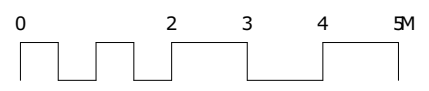
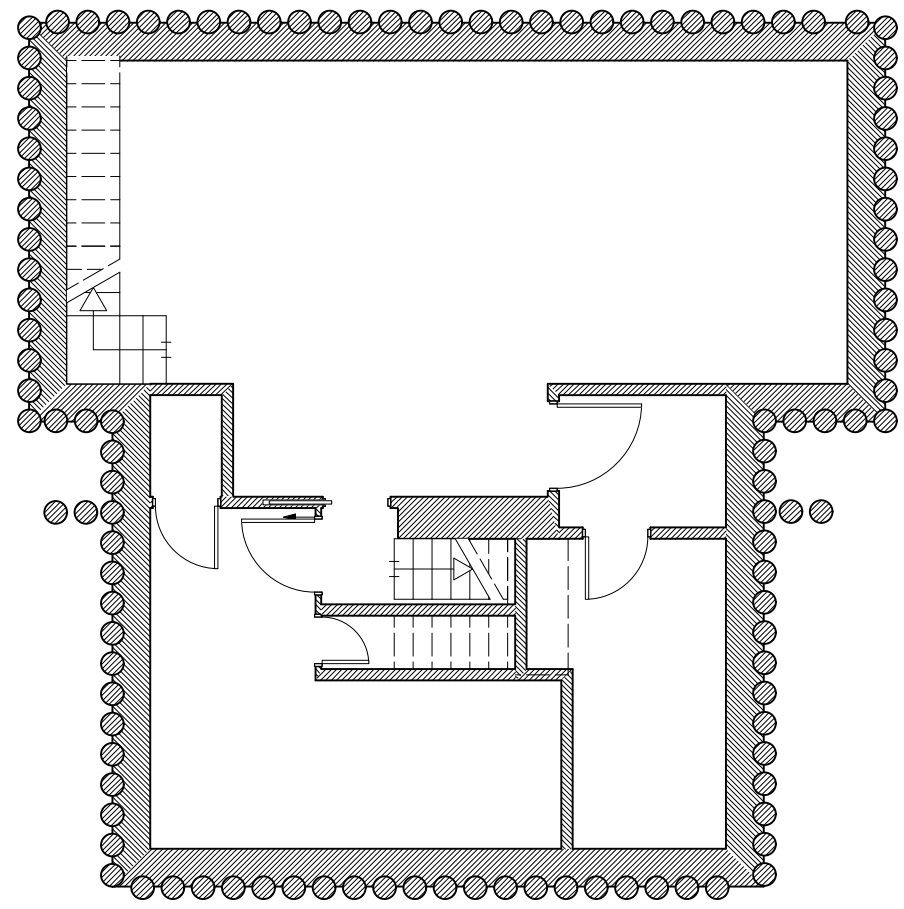


Existing plan drawings as per the construction drawings of Zac Monro Architects, January 2010.

Existing elevation drawings as per 2015/2443/P by 800 Group

Elevator designed to specification from "Otis Gen2 Life" product range. Actual dimensions to be confirmed by manufacturer.



P1 04/02/2021 JB Initial issue  
revisions:

All dimensions and areas are approximate and are to be verified.

Purpose of Issue:

**For Planning**

Norton Mayfield Architects  
Holford Works, Unit 8  
70 Judd Street  
Sheffield  
S1 2JZ  
Tel: 0114 270 0514  
Sheffield & London  
www.nortonmayfield.co.uk

B1 Basement Floor Plan

Project:  
**3 Holford Road, Hampstead,  
London, NW3 1AD**

Drawing No:  
2063-NMA-00-B1-DR-B-00100

Drawing Title:  
**Basement Floor Plan**  
Existing

Status: S2 Rev: P1 Scale: 1:50@A1  
1:100@A3

2063-NMA-XX-ZZ-A3-B-00001.VBK