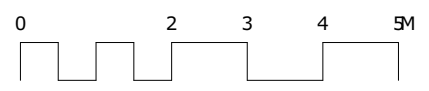
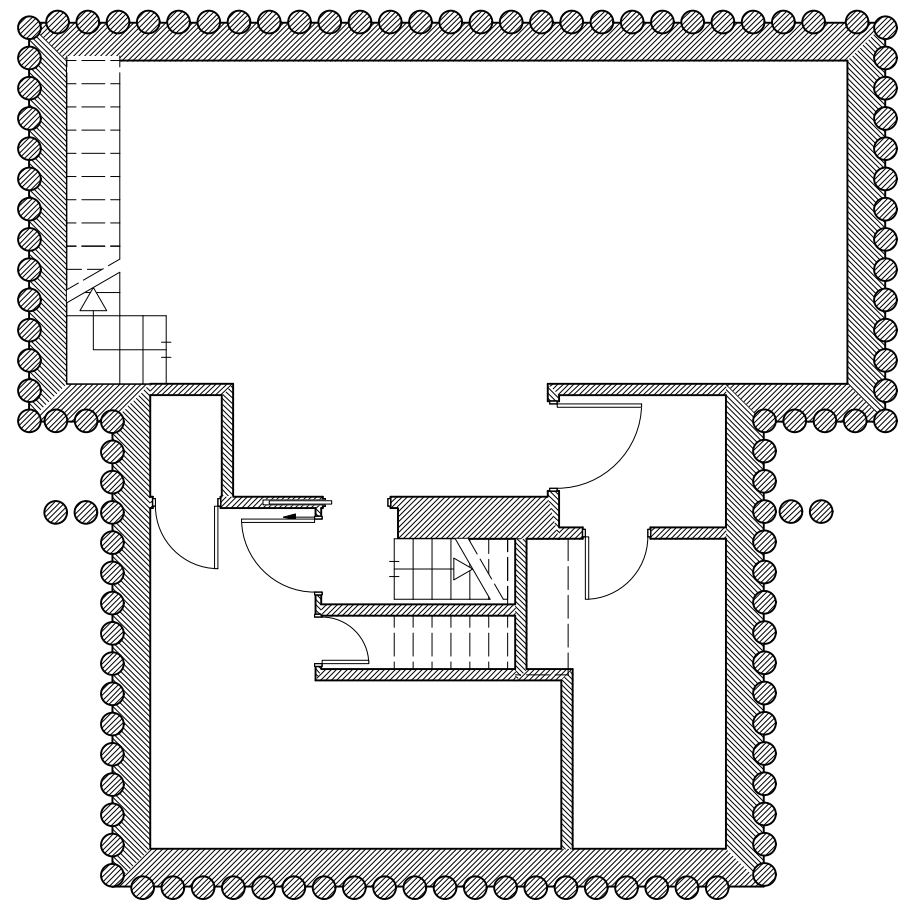


Existing plan drawings as per the construction drawings of Zac Monro Architects, January 2010.

Existing elevation drawings as per 2015/2443/P by 800 Group

Elevator designed to specification from "Otis Gen2 Life" product range. Actual dimensions to be confirmed by manufacturer.



P1 04/02/2021 JB Initial issue
revisions:

All dimensions and areas are approximate and are to be verified.

Purpose of Issue:

For Planning

Norton Mayfield Architects
Holford Works, Unit 8
70 Judd Street
Sheffield
S1 2JZ
Tel: 0114 270 0514
Sheffield & London
www.nortonmayfield.co.uk

B1 Basement Floor Plan

Project:
**3 Holford Road, Hampstead,
London, NW3 1AD**

Drawing No:
2063-NMA-00-B1-DR-A-00100

Drawing Title:
Basement Floor Plan

Proposed

Status: Rev: Scale:
S2 P1 1:50@A1
1:100@A3

2063-NMA-XX-ZZ-A3-B-00001.VBK