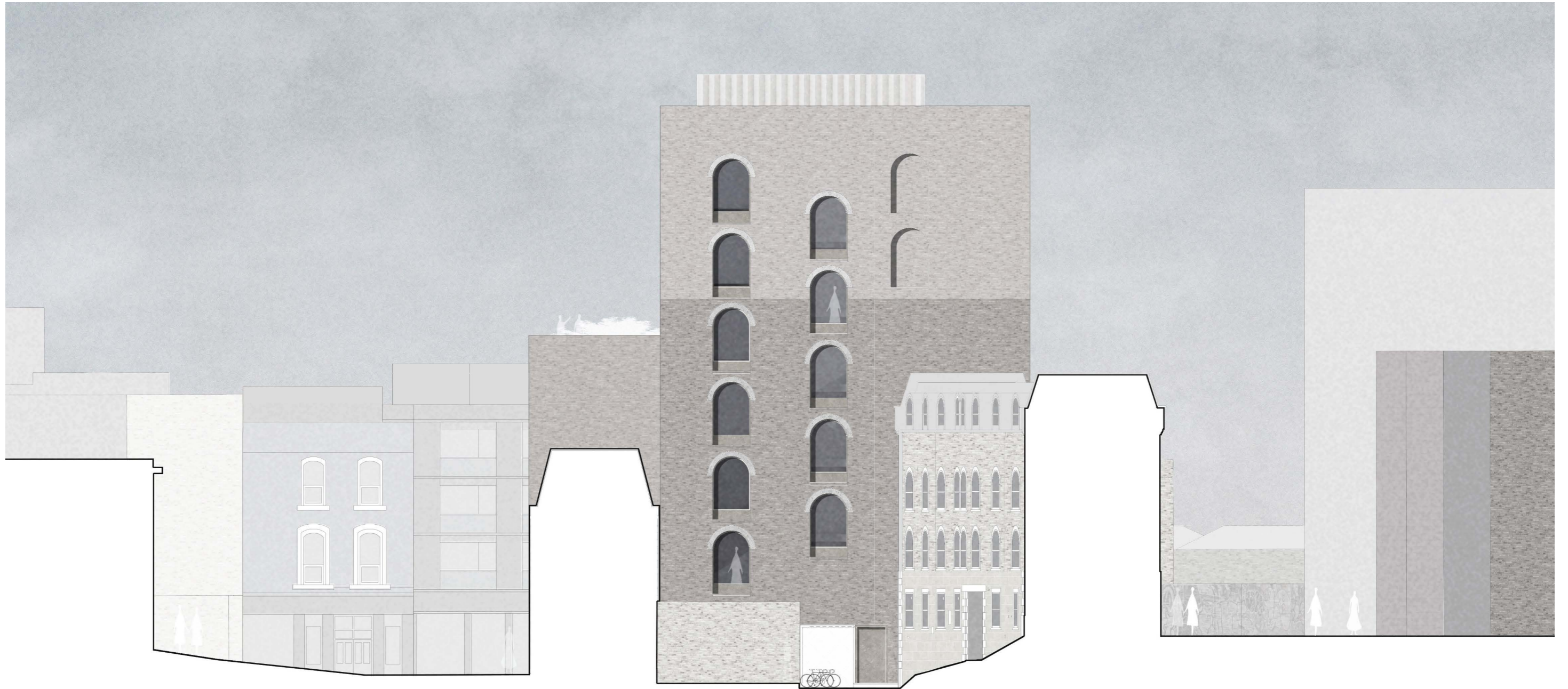




North Elevation

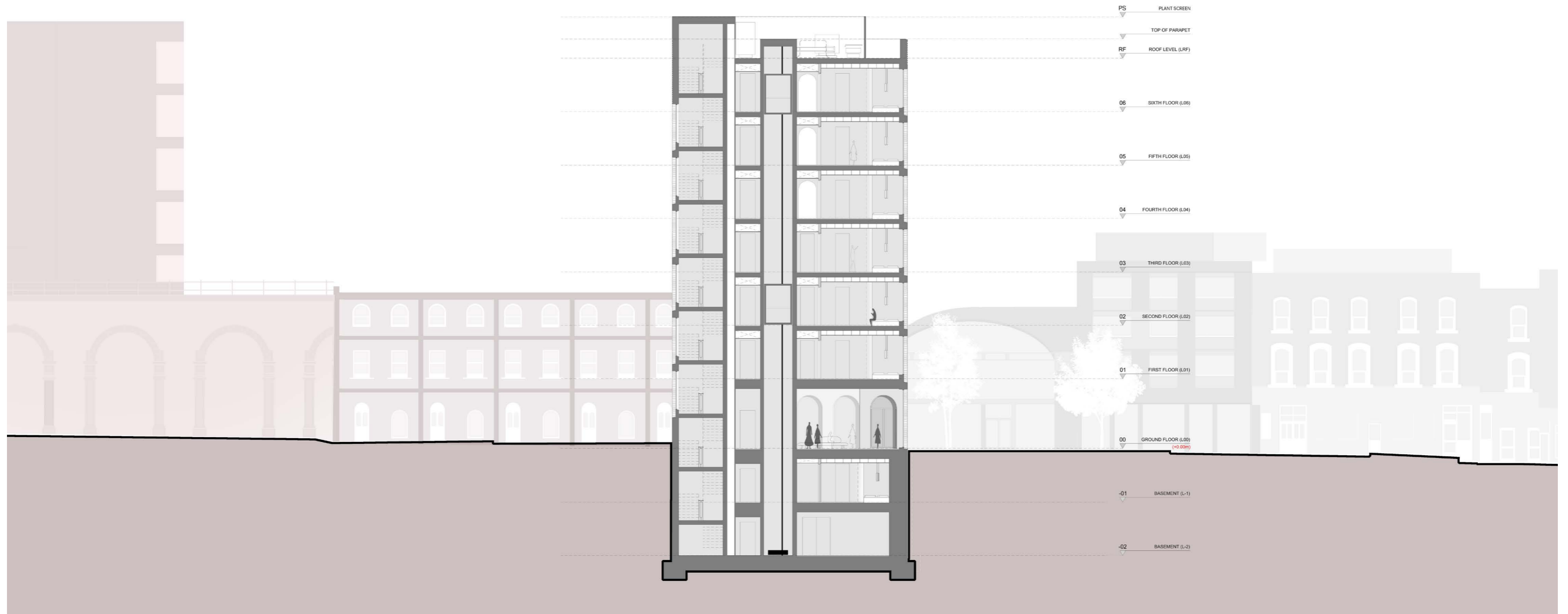


West Elevation

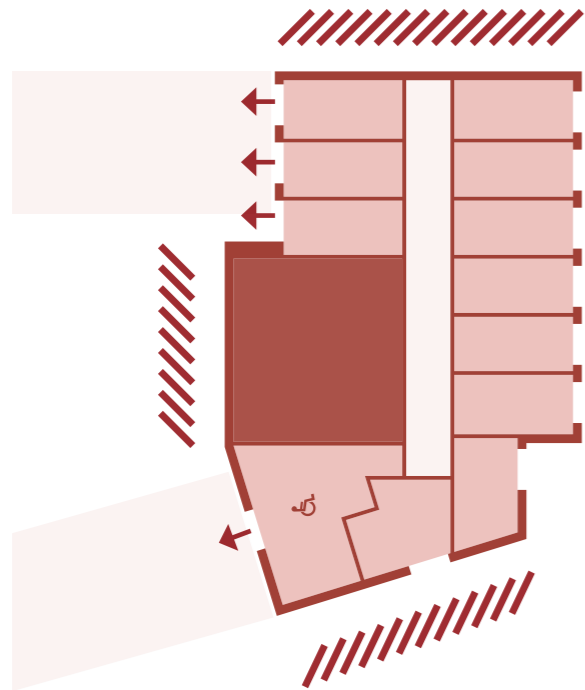


South Elevation

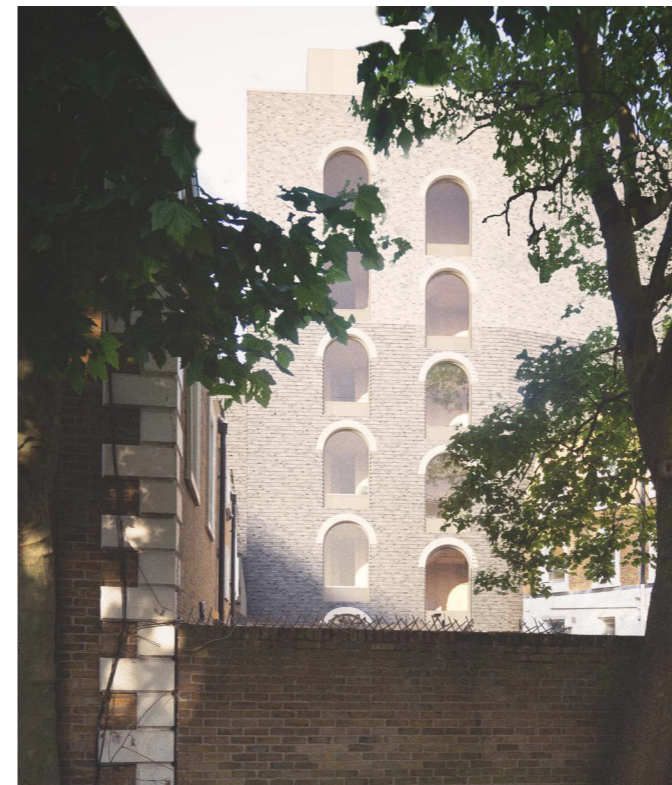
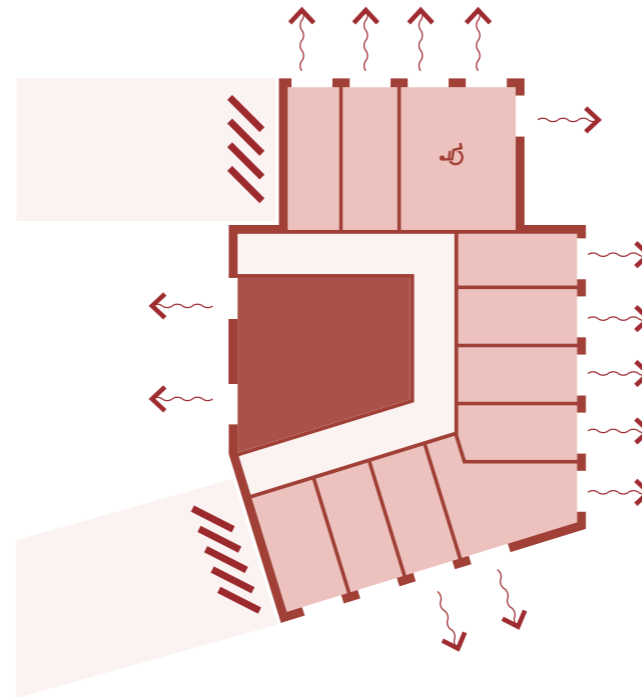
5.9  
CONTEXT SECTION



PREVIOUS SCHEME  
2019



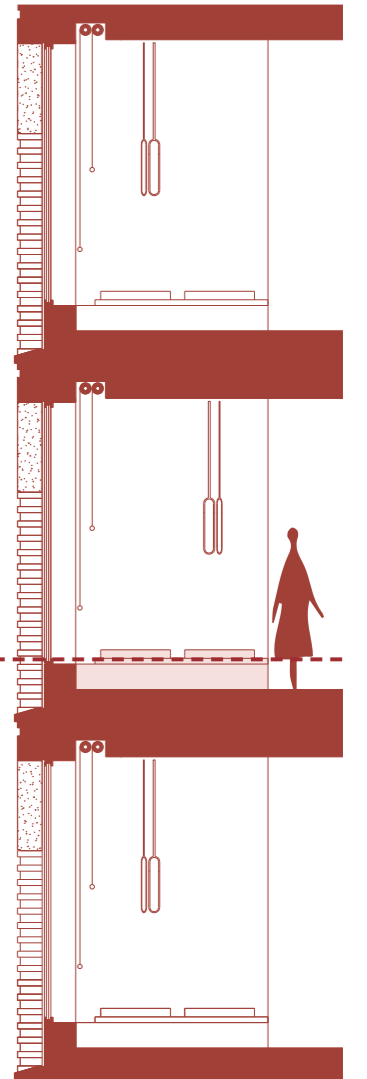
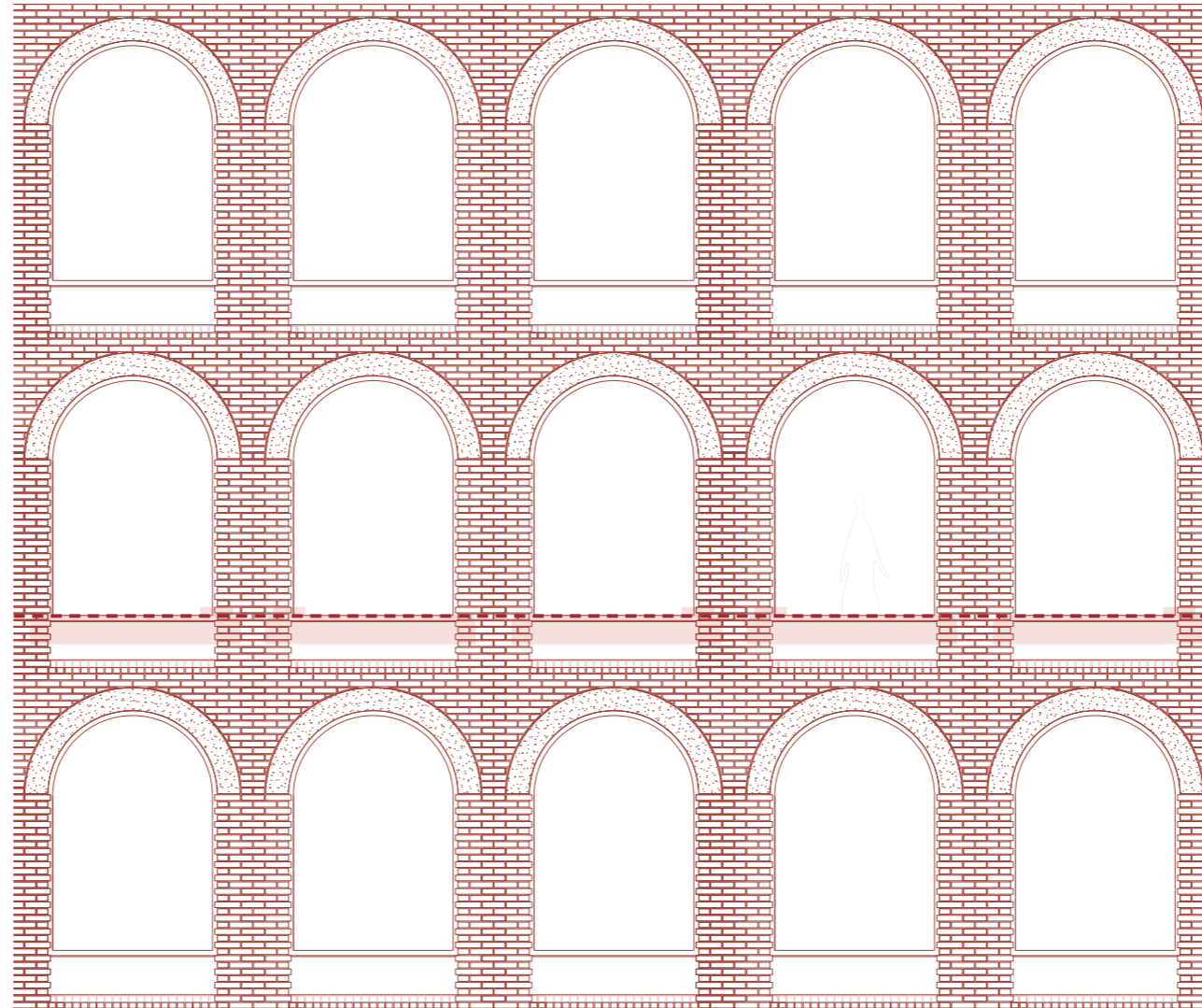
PROPOSED SCHEME  
2021



Windows on all street facing side elevations and to rear courtyard (proposed).

Revised layouts ensure windows across all street facing elevations. On the rear elevation (west) windows are omitted from the party wall elevations minimising any potential for overlooking.

Windows placed in the stair core facing the rear courtyard to improve privacy to neighbouring property.



1

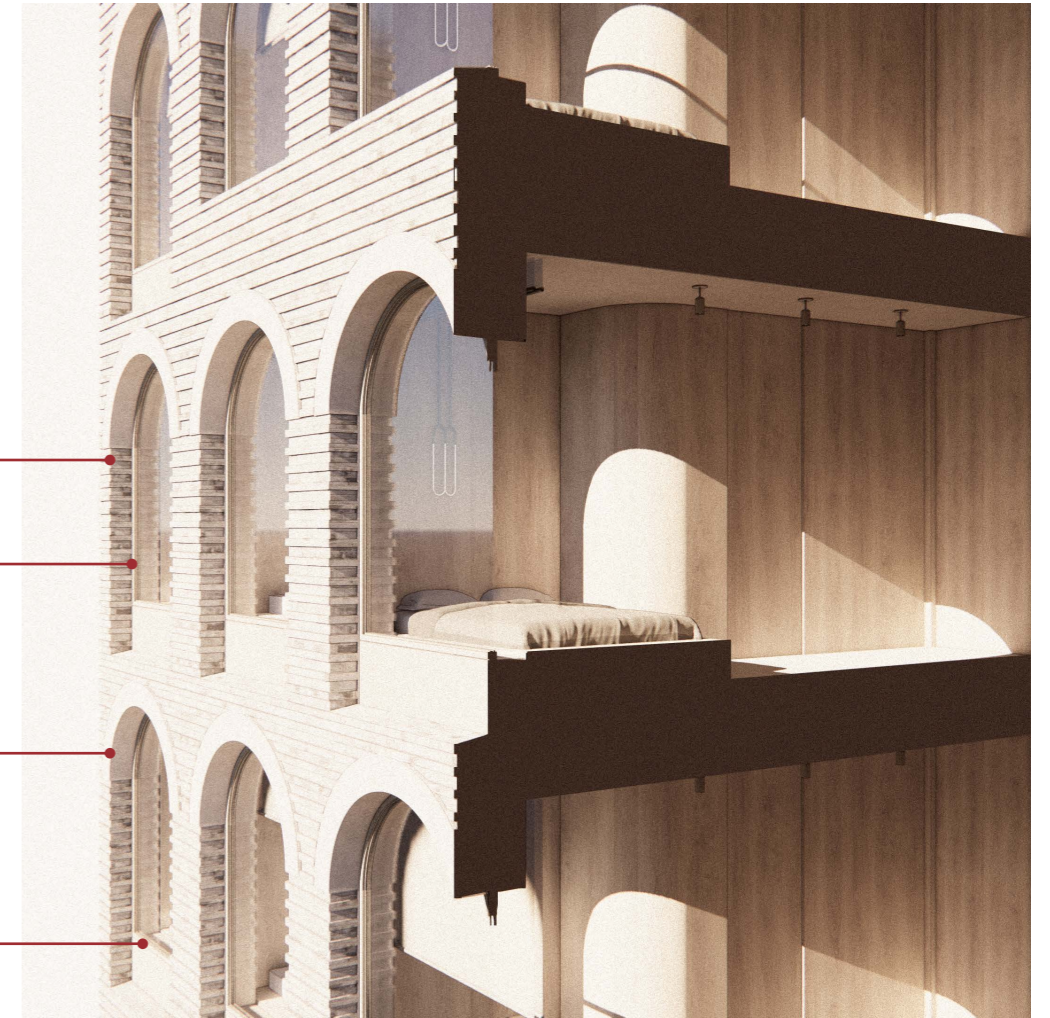
2

3

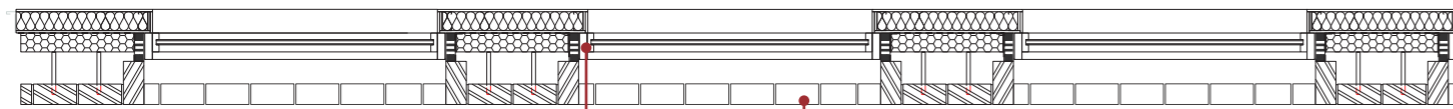
- 1. Visibility of hotel beds (section study)
- 2. Bay elevation (raised window sill)
- 2. Bay section (raised window sill)



Facade study



Detail Section Study - facade and typical hotel room



Detail facade plan

1. Profiled light buff brick facade
2. Profiled light buff brick facade (tone variation)
3. Pre-cast arched lintels
4. Champagne colour window metal frame
5. Champagne colour Insulated metal panel

**5.11.1**

The simple elegance of the facade will only be successful with the use of highest quality materials. We propose a brick laid in varying stratification of colour and tone. The full brick window recess is essential to give the masonry facade depth of shadow.



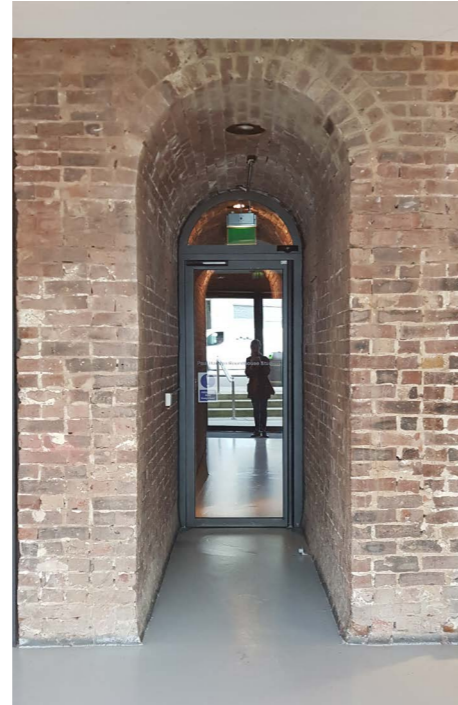
- 1. Light metal window frames
- 2. Light buff brick detailing
- 3. Pre-cast arched lintels
- 4. Light metal railings
- 5. Double blinds to windows



Brick buttresses to the external face of the Roundhouse



Brick arch within the lower ground of the Roundhouse



Faience tiles to Chalk Farm Station with moulding detail



5.13  
BUILDING ENVELOPE MATERIAL  
REFERENCE



The simple brick grid of the Interchange Building with arched window heads



Brick retaining wall to Chalk Farm Road with expressed piers and brick infill

**5.13.1**  
The references on the adjacent page highlight some of the local references that have informed our architectural design. This helps root the building in its context.

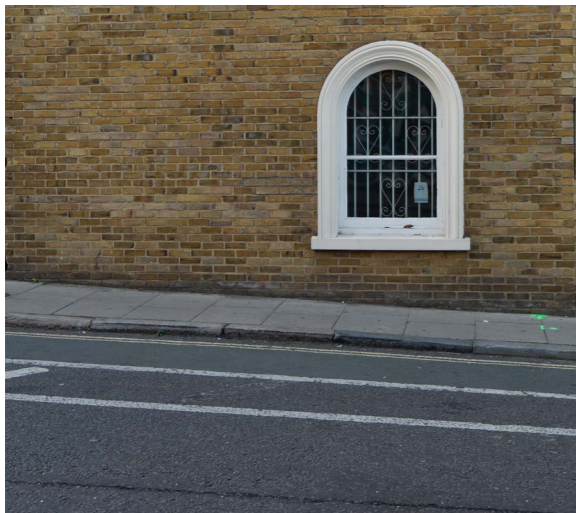


Textured brick  
& light metal  
tones,  
Kunstmuseum  
by Christ &  
Gantenbein

5.13  
BUILDING ENVELOPE MATERIAL  
REFERENCE



Light pre-  
cast stone  
/ concrete  
arched lintel



Existing  
building,  
arched window  
& buff brick



Changes in  
brick tone  
through  
detailing,  
Kunstmuseum  
by Christ &  
Gantenbein

5.13.2  
Arched windows, light pre-cast arched lintels, brick  
detailing creating varying tones across elevation.