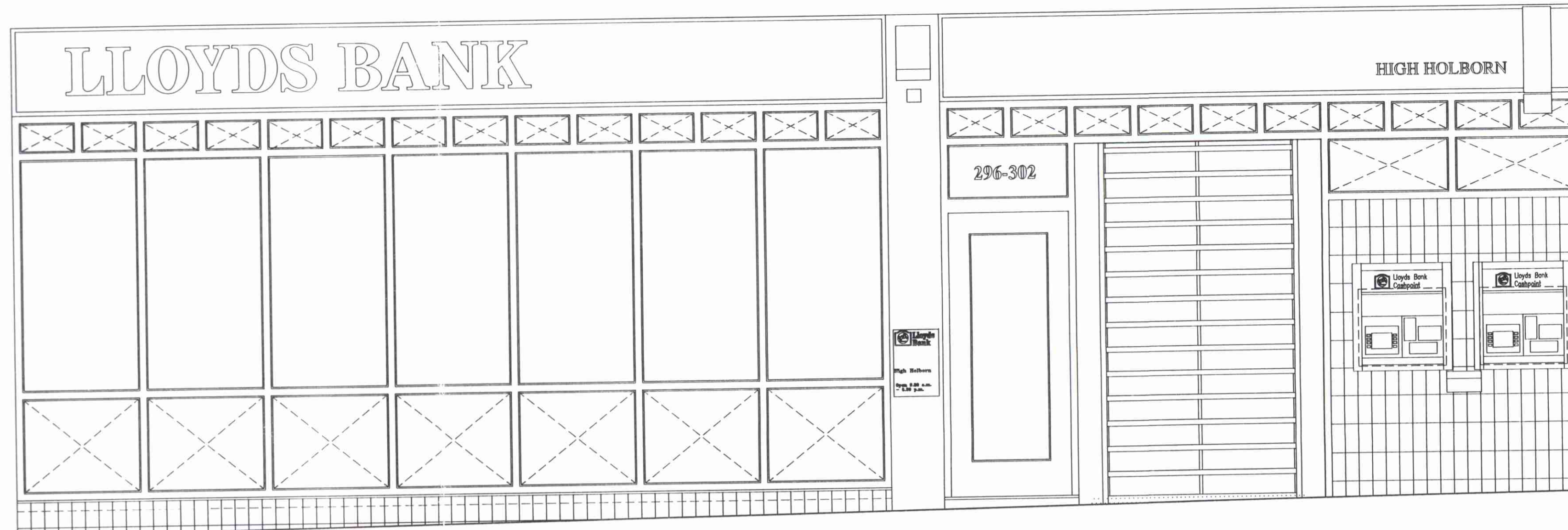
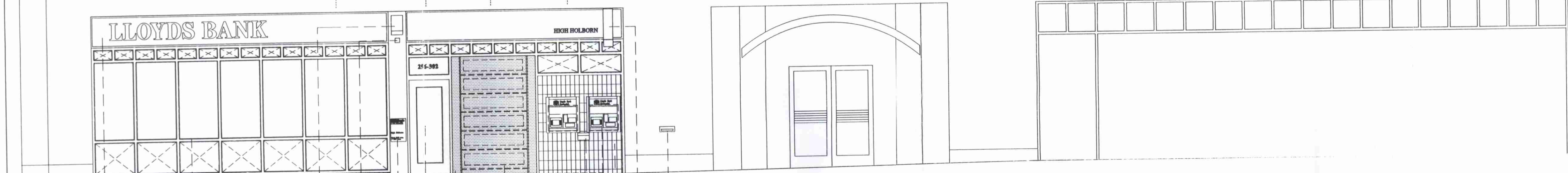
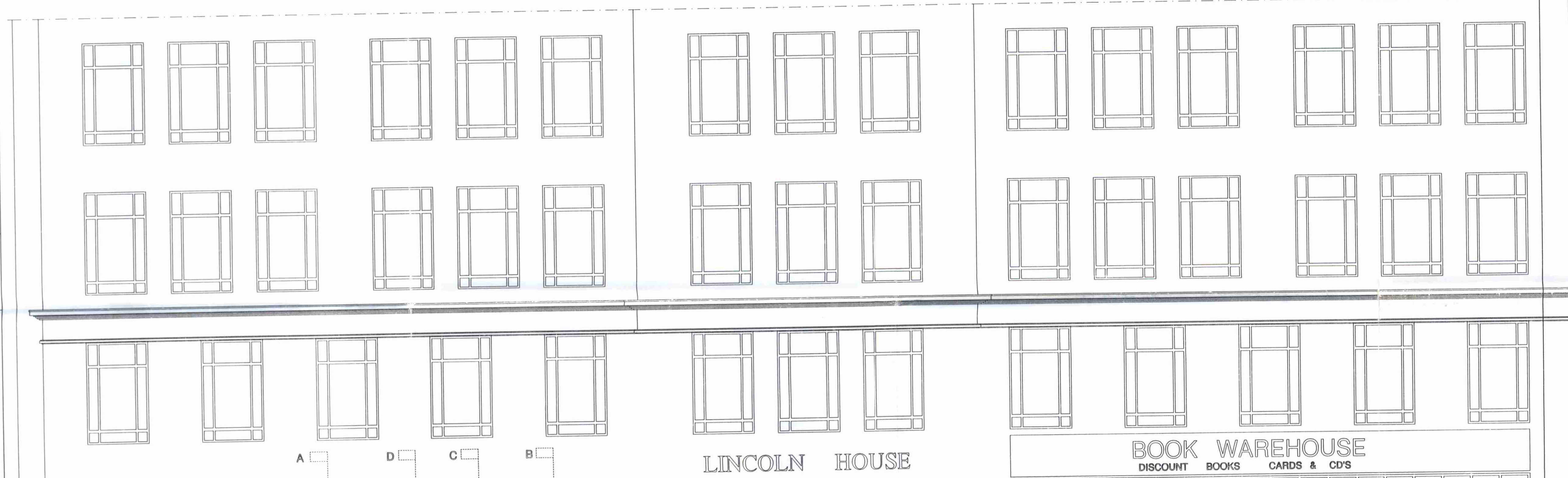


THE CONTRACTOR IS TO CHECK ALL DIMENSIONS ON SITE AND TO REPORT ALL DISCREPANCIES TO THE ARCHITECT

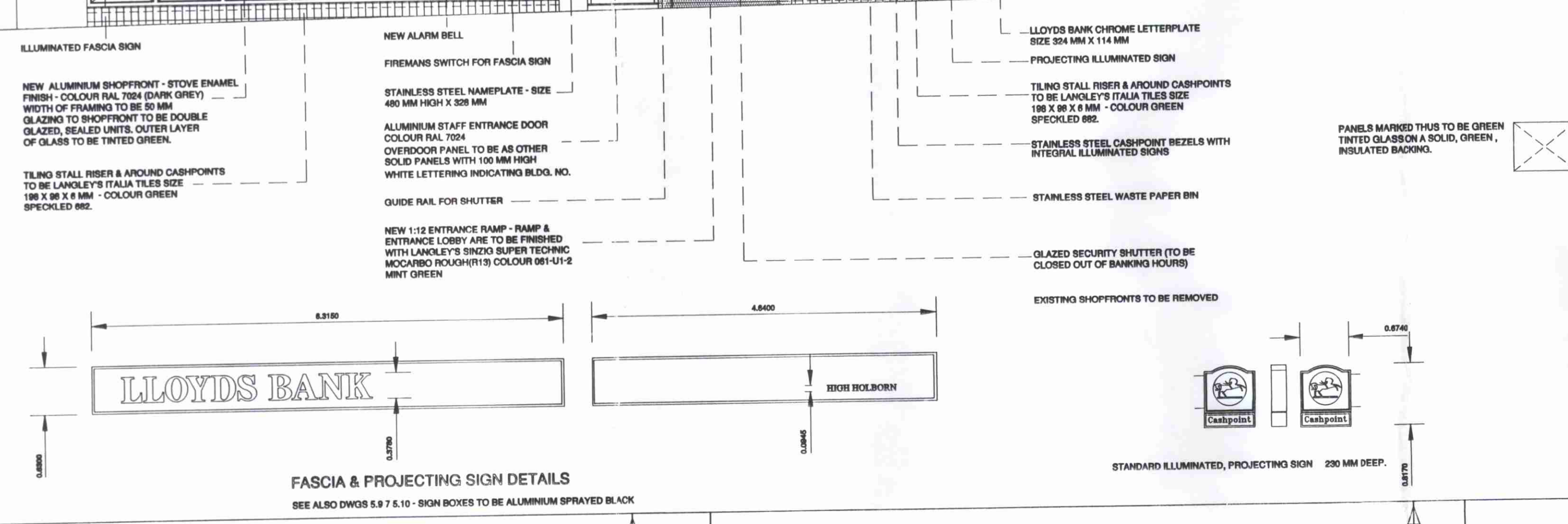


PROPOSED BRANCH ELEVATION
N.T.S.
SHUTTER DOWN

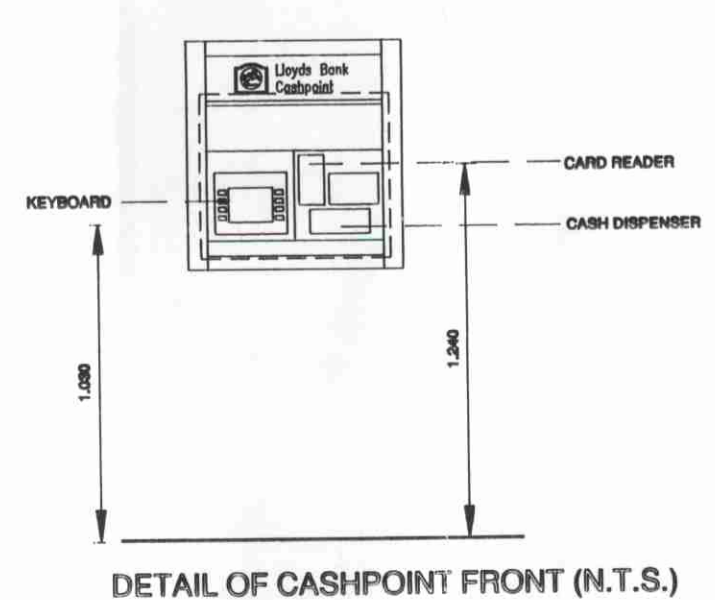


pc 19500814

LONDON BOROUGH OF CAMDEN
TOWARD COUNCIL PLANNING ACTS
14 JUL 1995
PLANS APPROVED
ON BEHALF OF THE COUNCIL



PROPOSED ELEVATION OF LINCOLN HOUSE



DETAIL OF CASHPOINT FRONT (N.T.S.)

	date MAR. 95	approved
	scale 1:50	drawn SMS
	dwg no. 1614-06-	
HIGH HOLBORN LINCOLN HOUSE 296/302 HIGH HOLBORN PROPOSED ELEVATION		
Regional Architect London London Regional Executive Office Lloyds Bank Plc. Brookmount House 62-65 Chandos Place London WC2N 4HG		
		TEL: 071-497 0700