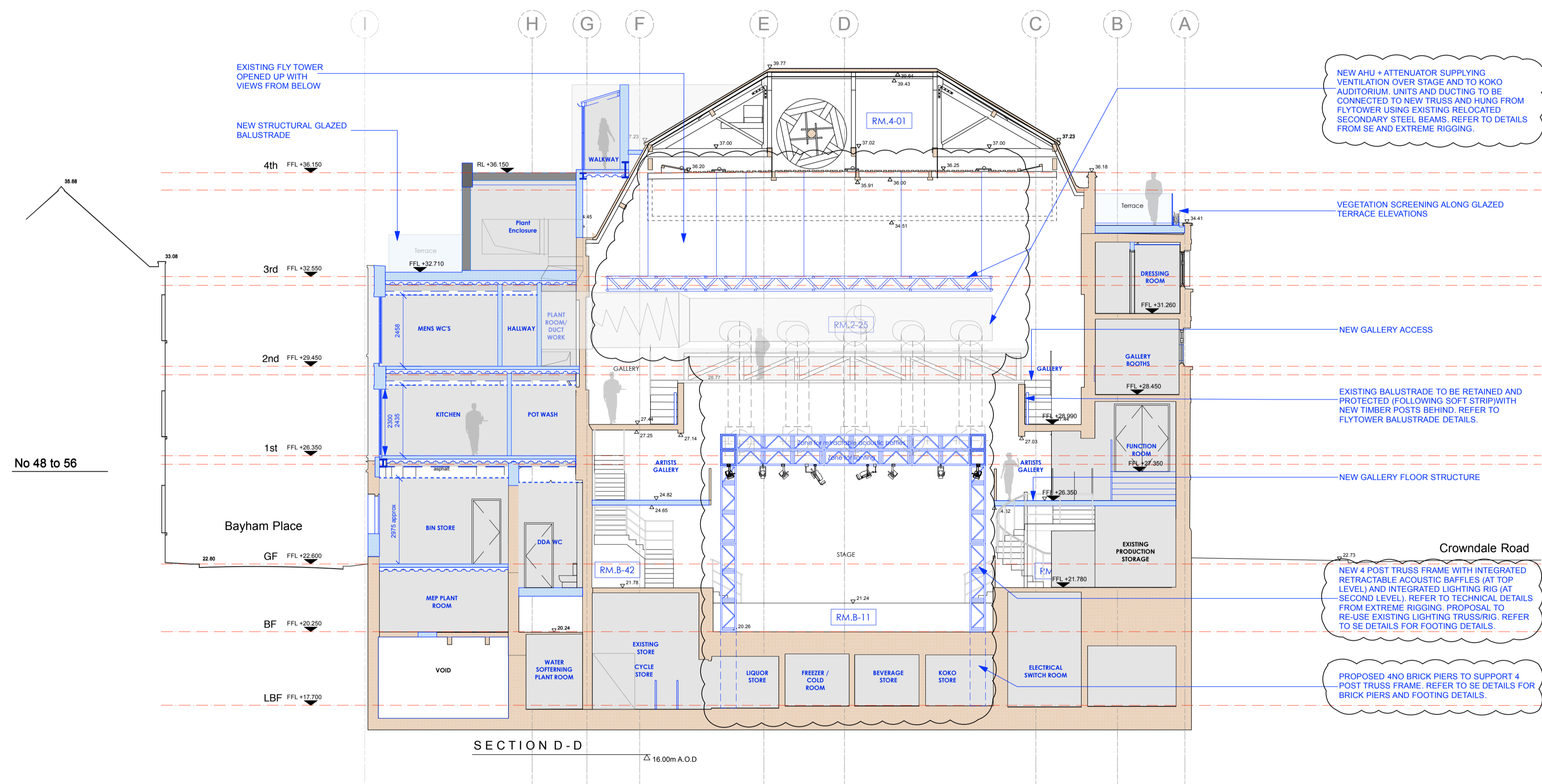


revision / date / amendments	amendments
- / 26/01/18 /	- First Issue
A / 02/03/18 /	1. AHU + Attenuator for KOKO stage and auditorium shown indicatively.
B / 23/03/18 /	2. Indicative rigging/ space frame shown 1. Tender Addendum (1). Indication of 4 post truss fixed at stage level for integrated automatic retractable acoustic baffles and integrated lighting rig. 2. Tender Addendum (2). New AHU + Attenuator over stage to be hung to existing relocated secondary beams in Flytower.
C / 01/06/18 /	Listed Building Application 1. Indication of 4 post truss fixed at stage level for integrated automatic retractable acoustic baffles and integrated lighting rig. 2. New AHU + Attenuator over stage to be hung to existing relocated secondary beams in Flytower.



01.06.18



STAGE 4

Archer Humphryes Architects

Basement
Central House
142 Central Street
London, United Kingdom
EC1V 8AR
T: +44 (0) 20 7251 8555

project title	
KOKO + Hope & Anchor + Bayham Place Camden, London	
drawing title	scale date
Proposed Section DD	1:100 18.05.17
drawing number	drawn checked
AHA/KKC / PR /303	FR/PC DA
	revision
	C