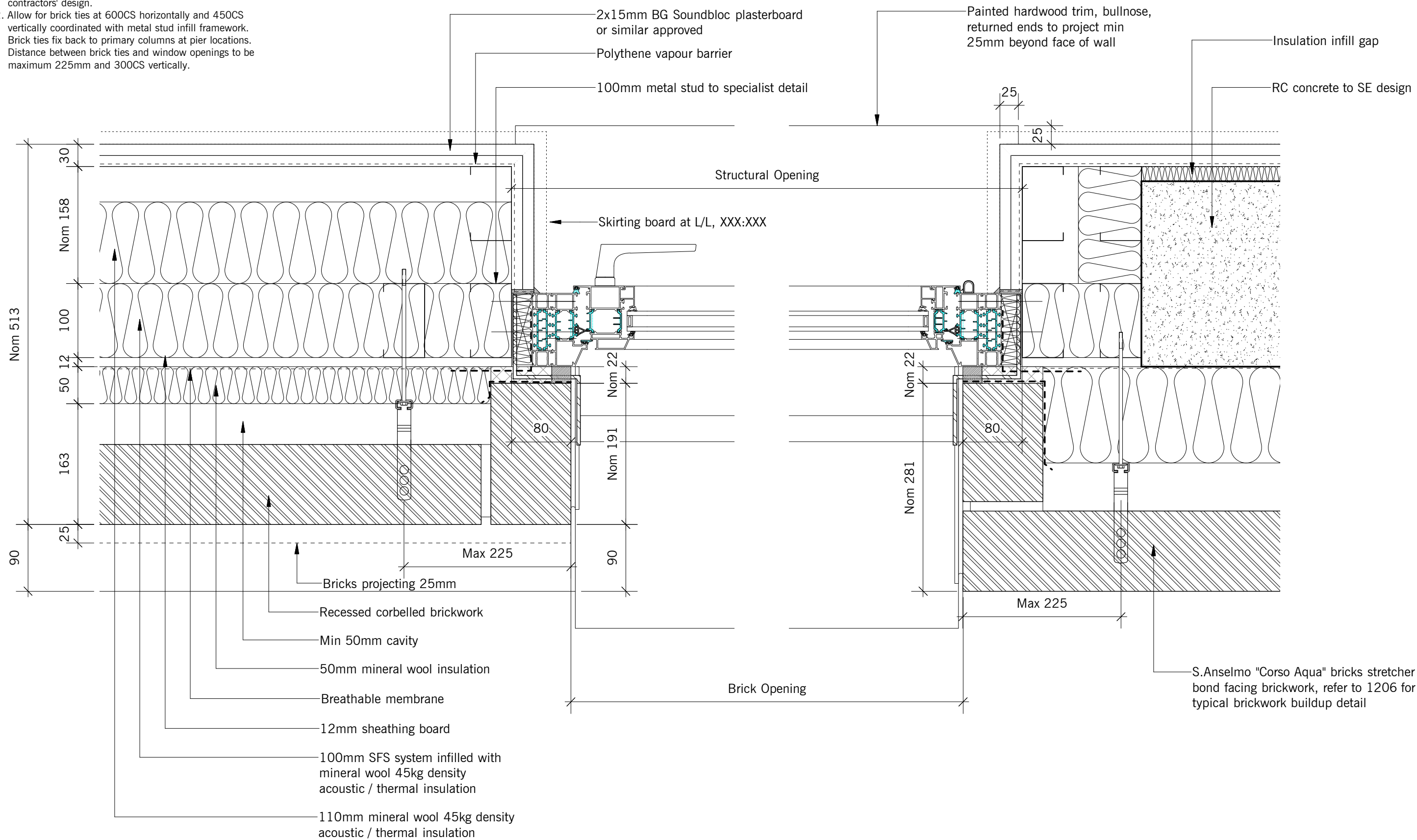


Note:

1. Brick support system to support brickwork at each level and main brickwork and return walls to specialist contractors' design.
2. Allow for brick ties at 600CS horizontally and 450CS vertically coordinated with metal stud infill framework. Brick ties fix back to primary columns at pier locations. Distance between brick ties and window openings to be maximum 225mm and 300CS vertically.



PLANNING CONDITION 3

DO NOT SCALE THIS DRAWING
WRITTEN DIMENSIONS ONLY TO BE USED
ALL DIMENSIONS ARE IN MILLIMETRES
ALL DIMENSIONS TO BE VERIFIED ON SITE
ANY INCONSISTENCIES TO BE REPORTED
TO THE ARCHITECT IMMEDIATELY

GENERAL NOTES:

1) THIS DRAWING IS TO BE USED IN CONJUNCTION WITH ALL RELEVANT ARCHITECTS, ENGINEERS AND SPECIALISTS DRAWINGS AND DETAILS

date	rev.	by	description	checked
22.01.21	P01	AS	Issued for Planning Condition.	GV
-	-	-	-	-
-	-	-	-	-
-	-	-	-	-
-	-	-	-	-

client
J MURPHY & SONS

MURPHY
WORLD-CLASS INTERIORS

status description
COORDINATION

**140-146
CAMDEN STREET
LONDON
NW1 9PF**

BERKELEY WORKS BERKLEY GROVE LONDON NW18XY
T.020 7483 7700 F. 020 7483 7733 ISDN. 020 7483 7734 e-mail: @chassaylast.co.uk

title
**BLOCK B&C - EXTERNAL RECESSED CORBELLED
BRICKWORK PLAN DETAIL**

drawn by AS checked by GV date 28.07.20 scale 1:5@A3

**CHASSAY
+ LAST**
ARCHITECTS

stage 4 dwg no. CSP-CLA-RD-ZZ-DR-A-1232 status S1 rev P01