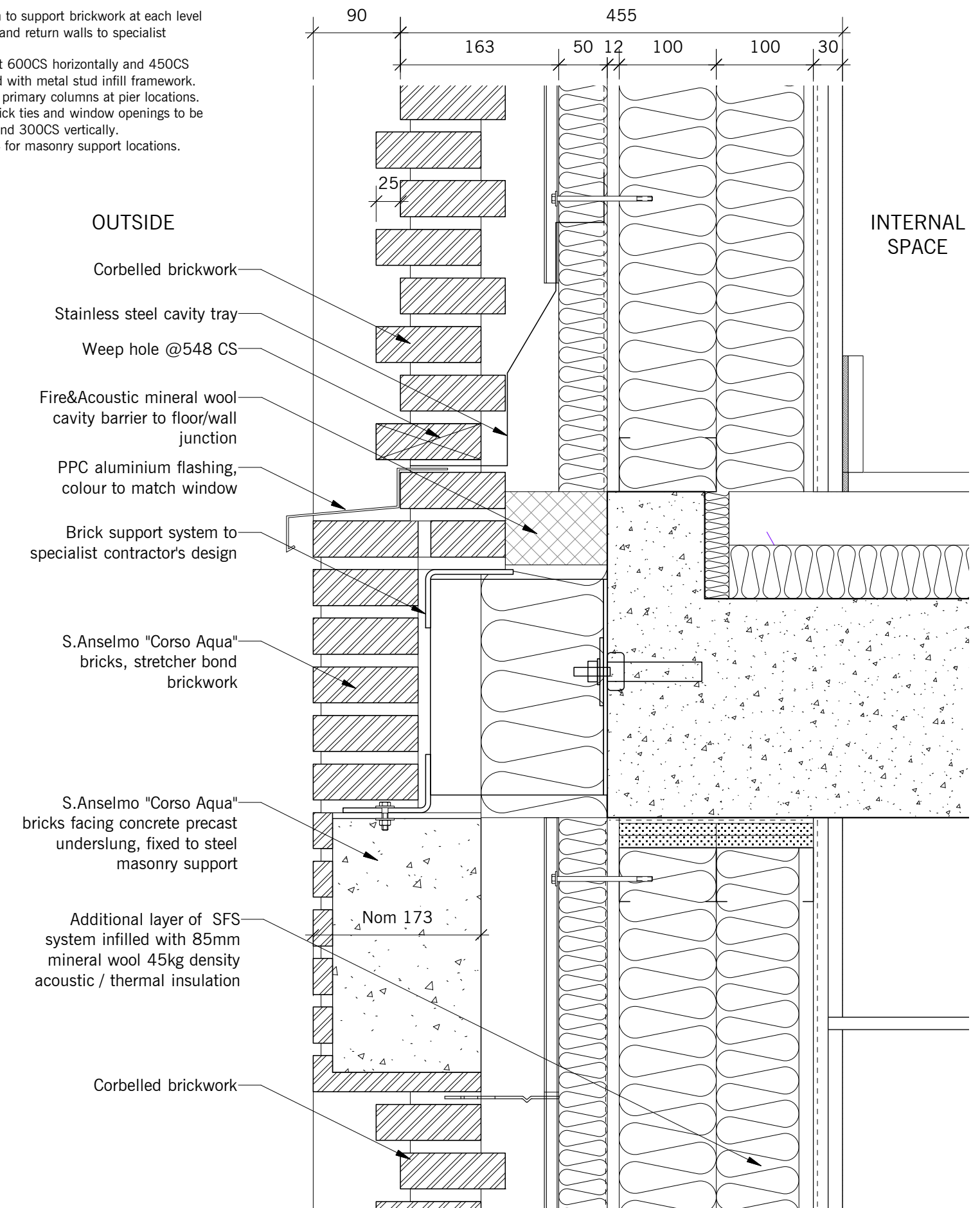


- Note:
1. Brick support system to support brickwork at each level and main brickwork and return walls to specialist contractors' design.
 2. Allow for brick ties at 600CS horizontally and 450CS vertically coordinated with metal stud infill framework. Brick ties fix back to primary columns at pier locations. Distance between brick ties and window openings to be maximum 225mm and 300CS vertically.
 3. Refer to B251-B254 for masonry support locations.



1 TYPICAL EXTERNAL WALL SECTION DETAIL
SCALE 1:5

2 CORBELLED BRICKWORK SECTION DETAIL
SCALE 1:5

PLANNING CONDITION 3

DO NOT SCALE THIS DRAWING WRITTEN DIMENSIONS ONLY TO BE USED ALL DIMENSIONS ARE IN MILLIMETRES ALL DIMENSIONS TO BE VERIFIED ON-SITE ANY INCONSISTENCIES TO BE REPORTED TO THE ARCHITECT IMMEDIATELY	GENERAL NOTES: 1) THIS DRAWING IS TO BE USED IN CONJUNCTION WITH ALL RELEVANT ARCHITECTS, ENGINEERS AND SPECIALISTS DRAWINGS AND DETAILS		date	rev.	by	description	checked	client	status	description	BERKELEY WORKS T. 020 7483 7700	BERKLEY GROVE F. 020 7483 7733	LONDON NW18XY ISDN. 020 7483 7734	www.chassaylast.co.uk e-mail: @chassaylast.co.uk	CHASSAY + LAST ARCHITECTS
	22.01.21	PO1	AS	Issued for Planning Condition.	GV	J MURPHY & SONS	COORDINATION	140-146 CAMDEN STREET LONDON NW1 9PF	title BLOCK B&C - TYPICAL EXTERNAL WALL AND RECESSED CORBELLED BRICKWORK SECTION DETAILS drawn by AS checked by GV date 28.07.20 scale 1:5@A3 stage 4 dwg no. CSP-CLA-RD-ZZ-DR-A-1208 status S1 rev P01						