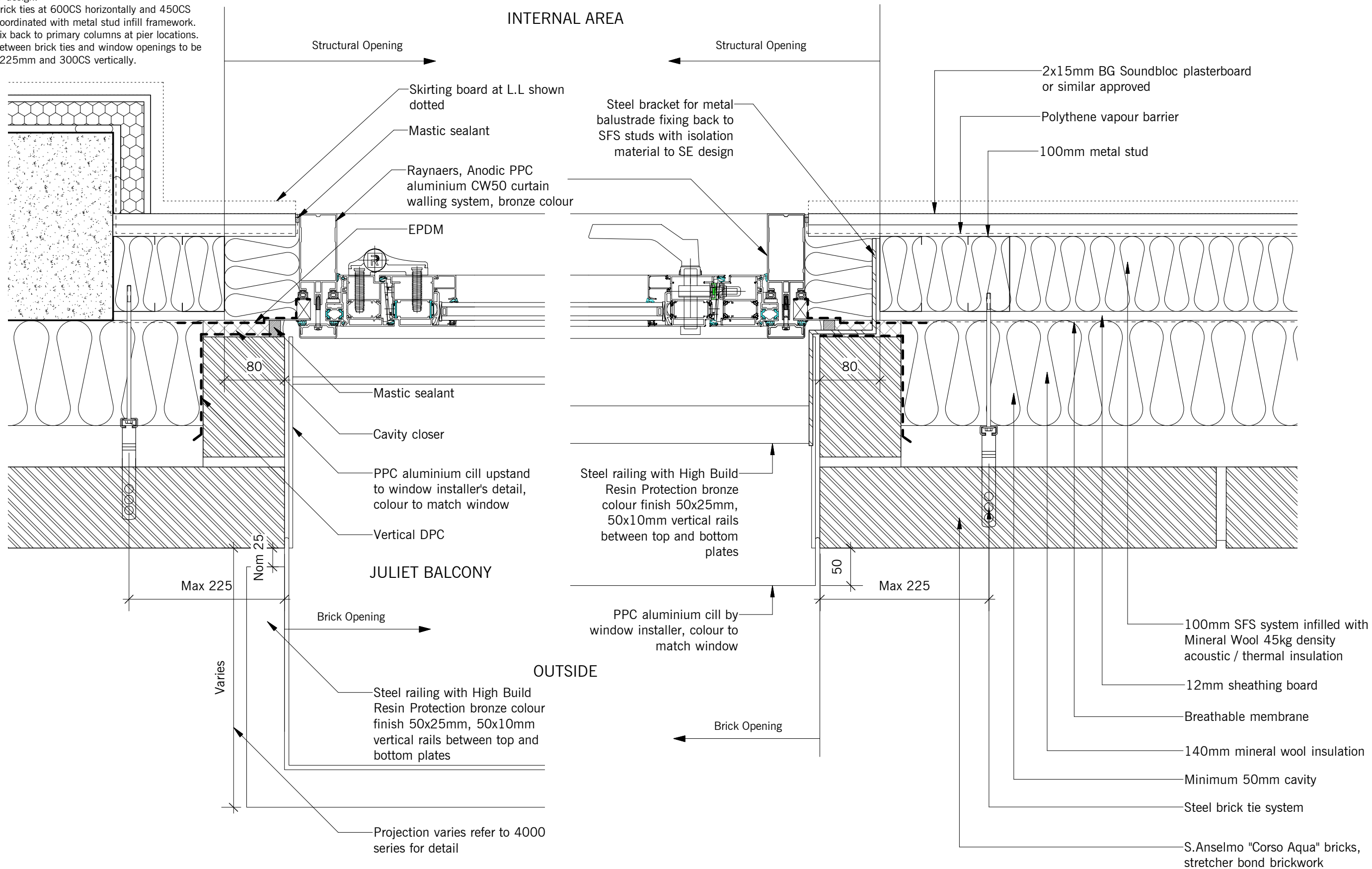


Note:

1. Brick support system to support brickwork at each level and main brickwork and return walls to specialist contractors' design.
2. Allow for brick ties at 600CS horizontally and 450CS vertically coordinated with metal stud infill framework. Brick ties fix back to primary columns at pier locations. Distance between brick ties and window openings to be maximum 225mm and 300CS vertically.



1 TYPICAL CW JAMB DETAIL 1 (PROJECTING JULIET)  
SCALE 1:5

2 TYPICAL CW JAMB DETAIL 2 (STEEL RAILING)  
SCALE 1:5

PLANNING CONDITION 3

DO NOT SCALE THIS DRAWING  
WRITTEN DIMENSIONS ONLY TO BE USED  
ALL DIMENSIONS ARE IN MILLIMETRES  
ALL DIMENSIONS TO BE VERIFIED ON-SITE  
ANY INCONSISTENCIES TO BE REPORTED  
TO THE ARCHITECT IMMEDIATELY

GENERAL NOTES:  
1) THIS DRAWING IS TO BE USED IN CONJUNCTION WITH  
ALL RELEVANT ARCHITECTS, ENGINEERS AND  
SPECIALISTS DRAWINGS AND DETAILS

date	rev.	by	description	checked	client
22.01.21	P01	AS	Issued for Planning Condition.	GV	J MURPHY & SONS
-	-	-	-	-	-
-	-	-	-	-	-
-	-	-	-	-	-
-	-	-	-	-	-



status description  
COORDINATION  
**140-146  
CAMDEN STREET  
LONDON  
NW1 9PF**

BERKELEY WORKS BERKLEY GROVE LONDON NW18XY www.chassaylast.co.uk  
T.020 7483 7700 F. 020 7483 7733 ISDN. 020 7483 7734 e-mail: @chassaylast.co.uk

title **BLOCK B&C - TYPICAL EXTERNAL WALL AND WINDOW  
JAMB DETAILS**

drawn by	checked by	date	scale	stage	dwg no.	status	rev
AS	GV	28.07.20	1:5@A3	4	CSP-CLA-RD-ZZ-DR-A-1206	S1	P01

