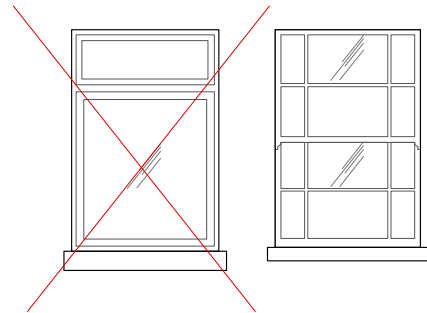
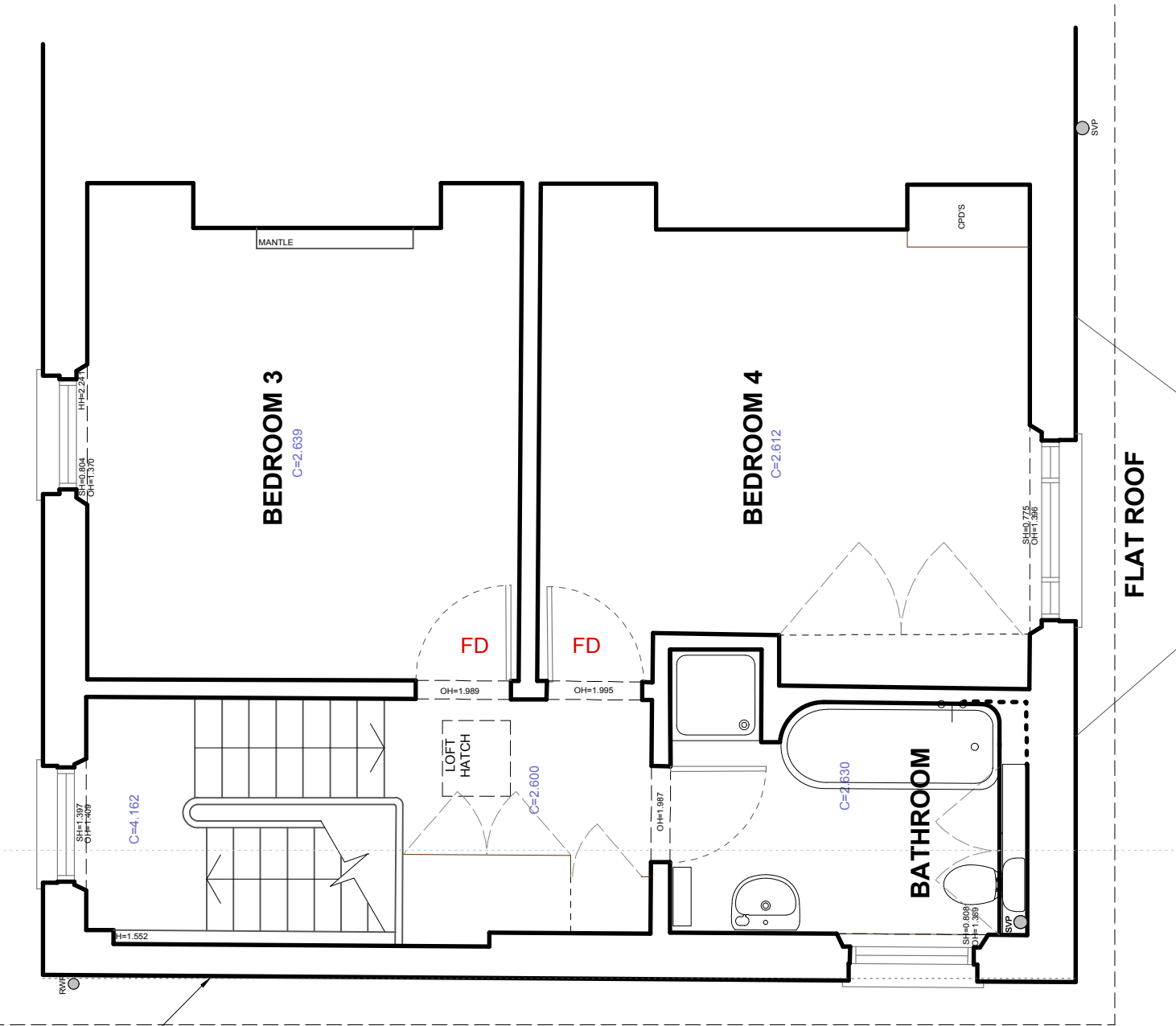
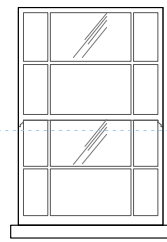


replace existing modern window with replica sash window using 4-6-4 DGU as lower floors

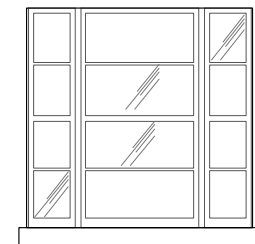
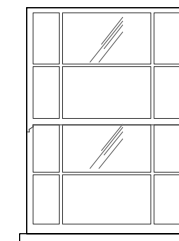


refurbish existing sash windows with full draught stripping - secondary glazing by others



WALL OUT OF PLUMB
DOTTED LINE HERE INDICATE
WALL AT GROUND FLOOR LEVEL

refurbish existing sash windows with full draught stripping - secondary glazing by others



refurbish existing sash windows with full draught stripping - secondary glazing by others

PROPOSED

