

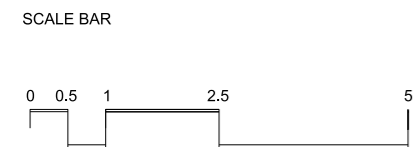
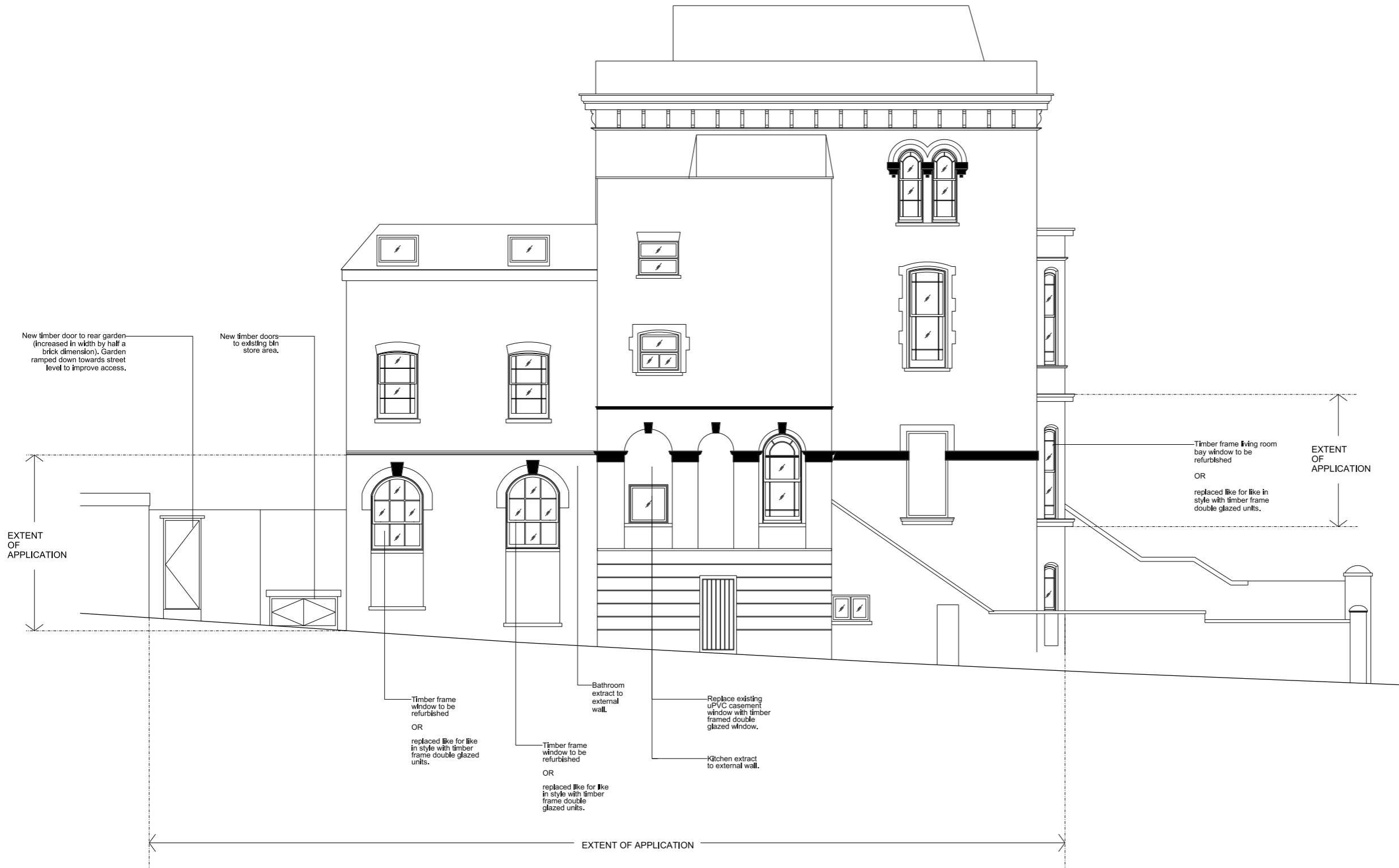
NOTE
When this drawing is issued in uncontrolled CAD format it will be accompanied by a PDF version and is issued to enable the recipient to prepare their own documents / models / drawings for which they are solely responsible. The recipient should report all drawing errors, omissions and discrepancies to the architect. All dimensions should be checked on site by the contractor and such dimensions shall be the contractor's responsibility.

StudioHA Limited accepts no responsibility or liability for:-
- any use of this drawing by parties other than the party for whom it was prepared or for purposes other than those for which it was prepared
- any alterations or additions to or discrepancies arising out of changes to the background information on which the drawings are based that was current at the time of issue, and which occur to that information after it has been issued by AHMM
- any loss or degradation of the information held in this drawing resulting from the translation from the original file format to any other file format or from the recipient's reading of it in any other programme or any version of the programme other than that which was used to prepare it
- the accuracy of survey information provided by others or for any costs, claims, proceedings and expenses arising out of reliance on such information
- any scaling from this drawing other than by the local planning authority solely for the purposes of the planning application to which it relates

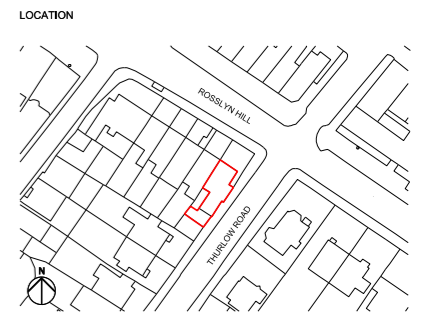
KEY

ISSUED REVISIONS

REV	DATE	NOTES
01	22.02.20	Issued for Information
02	16.03.20	Text updated
03	25.07.20	Text updated



CONSULTANTS NAME
STRUCTURAL ENGINEER: HEYNE TILLET STEEL LTD



studioHA 23 Drysdale Street
Shoreditch, London, N1 6ND

Job title
FLAT 2, 43 ROSSLYN HILL, HAMPSTEAD
drawing title / location
EAST ELEVATION - PROPOSED

scale
1:100@A3; 1:200@A4
status
PLANNING
project
18001
source
A
drawing no.
P_00_202
revision
03