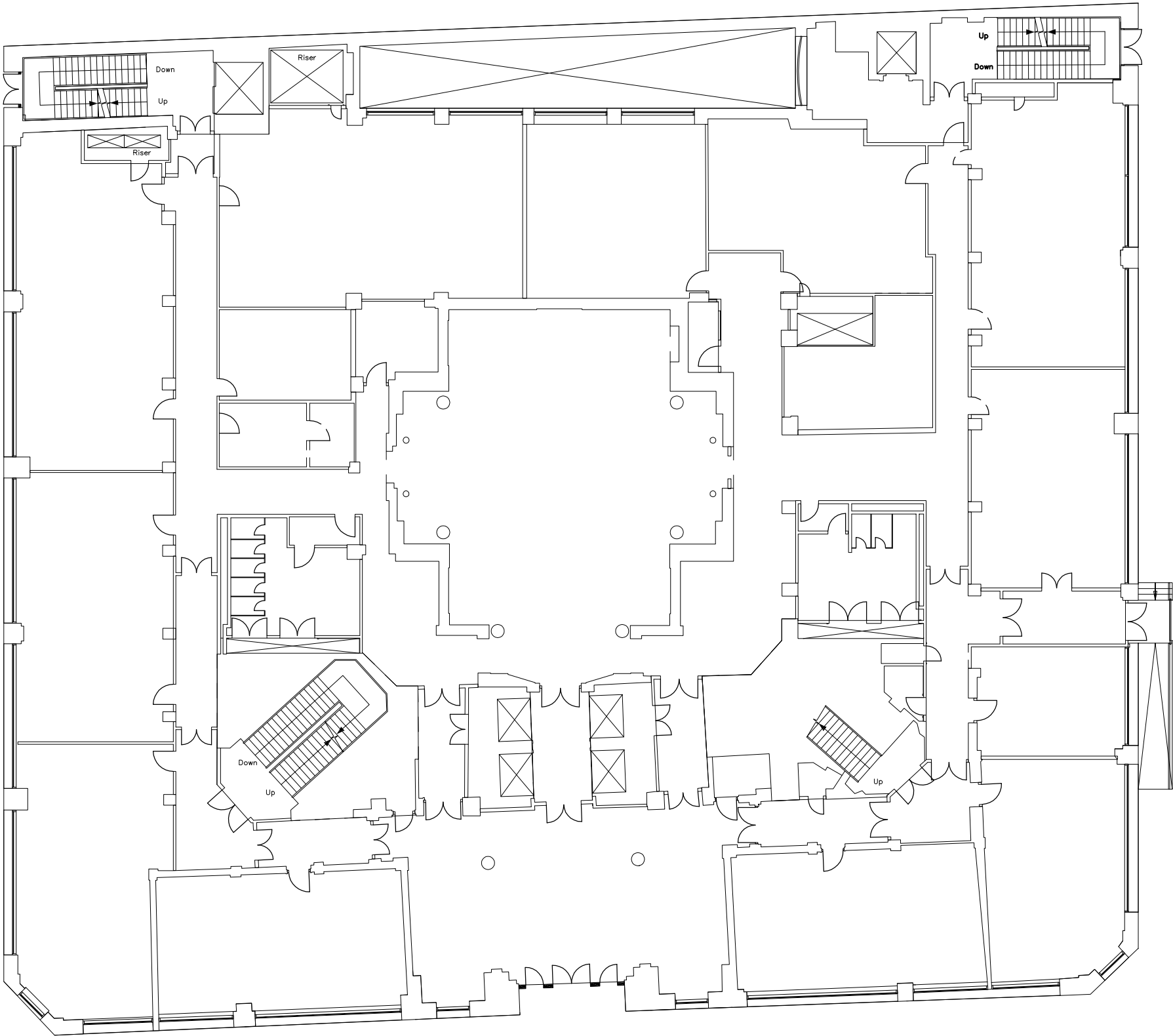

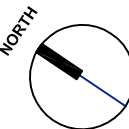
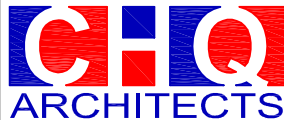



EUSTON HOUSE
24, EVERSOLT STREET



EXISTING GROUND FLOOR PLAN

<div>CLIENT</div> <div> Department for Work & Pensions</div>	<div>GENERAL NOTES</div> <div>All drawings are subject to full site survey. All dimensions are to be checked on site.</div>	<div>SCALE</div> <div>0m5m10m</div>	<div>NORTH</div> <div></div>	REV.	DESCRIPTION	DATE	INITIALS	<div> <small>CHQ Architects Ltd. The Maltings, 44 Whitehorse Street, Baldock, Hertfordshire SG7 6QQ Telephone: (01462) 895110 Email: design@chq-architects.co.uk www.chq-architects.co.uk</small></div> <div></div>	<div>PROJECT</div> <div>DWP Euston House 24, Eversholt Street, London. NW1 1AD</div>	DRAWING				
										Existing Ground Floor Plan				
										DATE	January 2021	DRAWN	JW	
										SCALE	1:200@A3	CHECKED		
ISSUE										PLANNING				
										CHQ.20.16050-PL02				