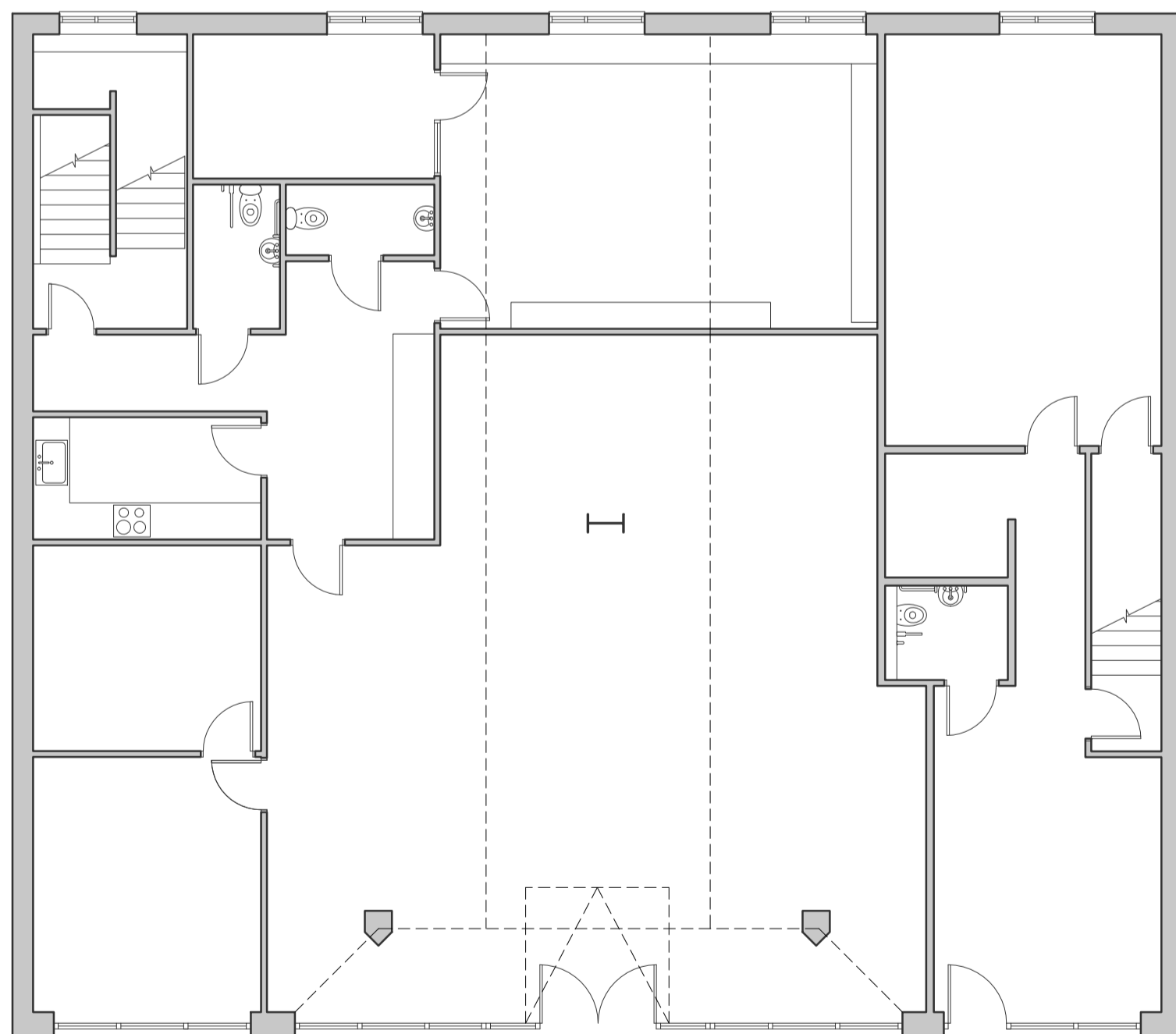




SOUTH EAST ELEVATION



GROUND FLOOR PLAN

revision date description
 status
PLANNING
 project title
 113 REGENTS PARK ROAD, PRIMROSE
 HILL, LONDON
 drawing title
 EXISTING - PLAN & ELEVATION
 first issued drawn scale @ A2
 04/02/21 JC 100
 job/drawing no./revision
16111 - SU1002 -
 The Studio, 70 Church Road, Wheatley, Oxford, OX33 1LZ
 01865 873936 | info@andersonorr.com | www.andersonorr.com