




Notes

This drawing is © Architype Ltd.
 Check this drawing is the latest revision.
 Do not scale from this drawing.
 Do not use the information on this drawing without checking all dimensions on site.
 Do not use any areas indicated for either valuation, purchase, sale or any other form of legally binding contract.
 Do not reproduce any part of this drawing without prior written consent.
 Report any discrepancies on this document to Architype.
 Read this drawing in conjunction with the associated models, specifications and related consultant's documents.
 Equivalent products / materials may be Approved where the Employer's Requirements, Thermal Performance, Airtightness and any other specified performance requirements are met. Subject to Architype "Acceptance".
 All materials to be certified to comply with BS 14001/or BES6001 or be able to provide a Chain of Custody certificate in order to comply Code for Sustainable Homes. All timber species and sources used in this development are not to be listed on the CITES appendices for endangered or threatened species.
Designer's Hazard Identification
 It is assumed that all works will be undertaken by a competent contractor working, where appropriate, to an approved method statement. In addition to the hazards typically associated with the types of construction detailed on this drawing, any known abnormal hazards specific to this drawing have been identified.



KEY

Brick Bonds

Note: All bricks not shown otherwise are standard stretcher bond







-  Corbelling to Entrance
-  Mesh Bond as per Mae document 1B Brick & Bonds - 04.May.17
-  Dentilated Bond as per Mae document 1B Brick & Bonds - 04.May.17

Brick Types




-  All Bricks not noted are as VE Schedule STP/EF/8C (F10/110A), Jannihof, Black - Red Variegated.
-  As VE Schedule STP/EF/10C-FS, Jannihof, Black - Blue Variegated.

Notes:
 - Parapets and Garden walls shown transparent where necessary to view elevation beyond

Other

-  Starling Boxes
-  Sparrow Boxes
-  Movement Joint to be spaced less than 12m within wall, Exact locations TBC. HPL to confirm if joints to be centred
-  DPC Cavity tray - Line indicates base of DPC. Refer to DD-100 + 500 Series for details.
-  Brick masonry support location - Please refer to S.E. information for details.
-  MVHR Intake/ Extract, HPL to confirm fabrication feedback on VE item no 9 as similar pattern will apply to grill subject to Mae approval

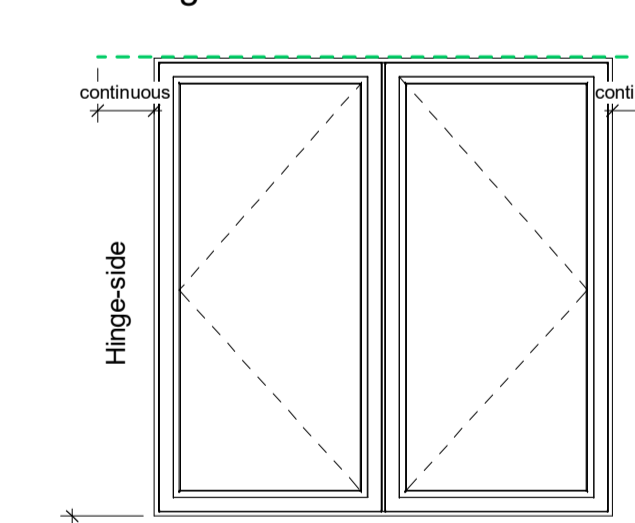
MVHR Fire Stopping

-  Detail Type A - Refer H-DD-250
-  Detail Type D - Refer H-DD-250
-  Detail Type E - Refer G-DD-250

Rev	Date	Description	Rev	AMF
7	15.10.20	NMA - Refuse update	LM	AMF
6	30.08.19	Amended brick type type	CR	AMF
5	29.08.19	Legend clarification	CR	AMF
4	02.11.18	Amendments as detailed	CR	AMF
3	30.05.18	Update to L10 Overview	LM	AMF
2	24.03.18	Second Issue Construction	MF/CR	AMF
1	09.11.17	First Construction Issue	SH	AMF

Revision Schedule

Drawing Convention Elevation



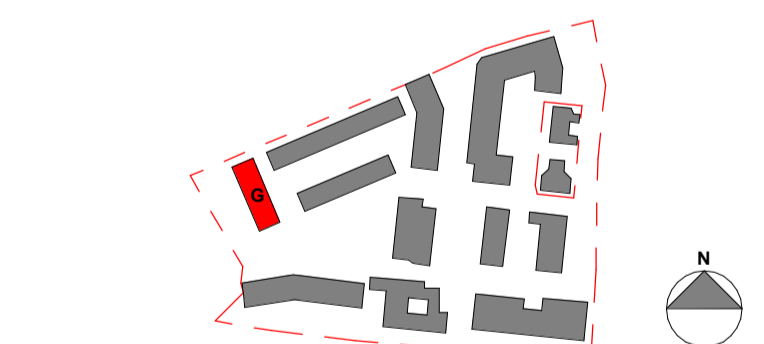
Refer to typical window sill detail DD-500 series

Window/door elevations show view from the outside. Dotted lines converge at hinged side.

Note: Refer to plans and elevations to confirm handling direction.

- * = Preformed stop ends as F30/385
- # = Preformed Corners/Junction Cloaks as F30/385
- + = Preformed Corners/Junction Cloaks as F30/385

All preformed cavity tray units to be surface fixed type suitable for 150mm cavity width.
 DPC Cavity Tray should overlap the Preformed Unit by minimum 100mm, the lap being bonded with manufacturers recommended DPC Jointing Tape in accordance with all manufacturers guidance and recommendations.



LONDON: 020 7403 2889 WWW.ARCHITYPE.CO.UK HEREFORD: 01981 542 111

Client: Hill Partnership Ltd for Camden Council

Project: Agar Grove Block G

Drawing Title: North Elevation

Project Originator Type Role Phase Block Unit Unique ID
 T14011 - ART - DR - A - 1b G 00 - GA-601

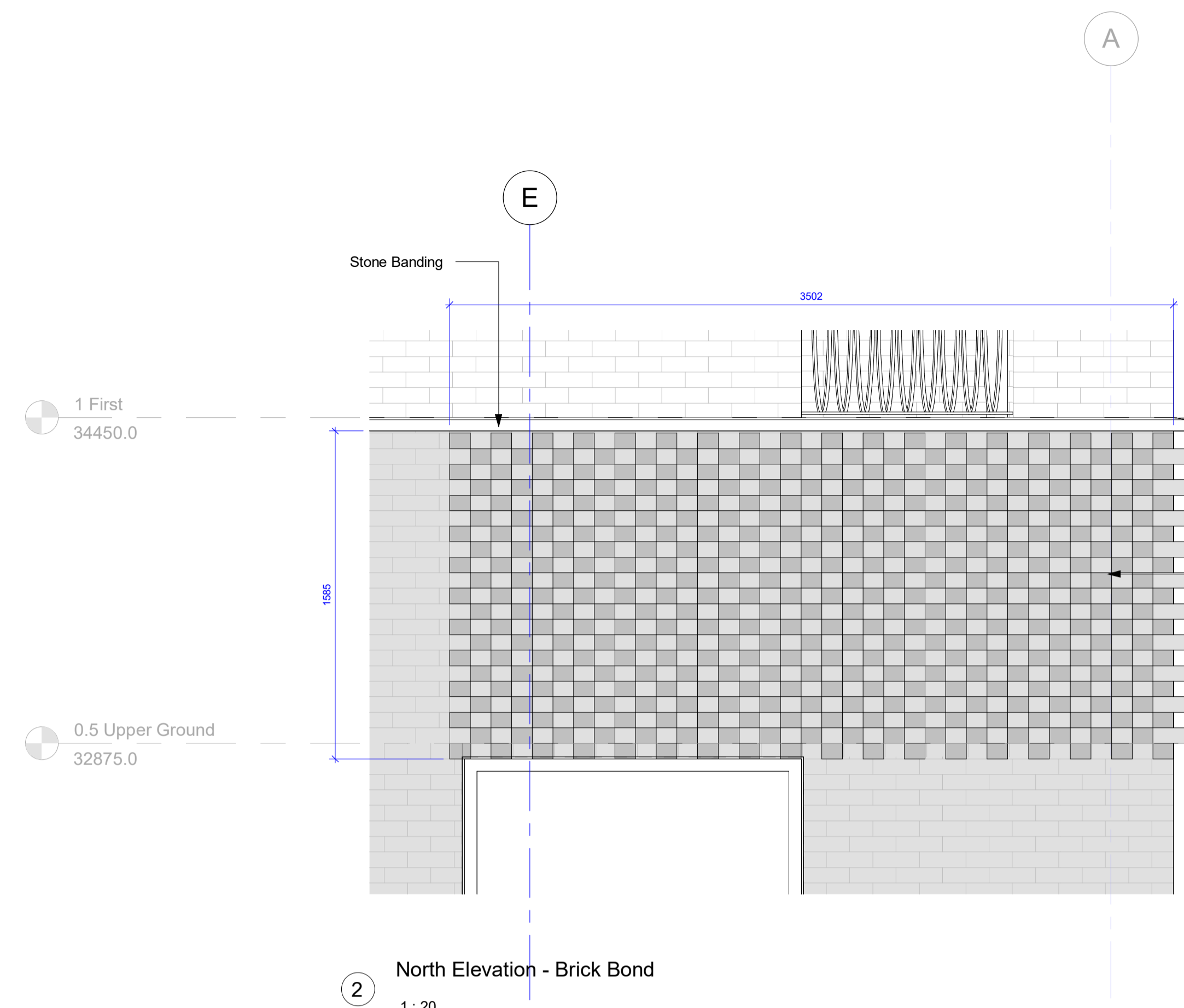
Status: Code Suitability Description
 A Issued For Construction

Revision: Code Revision Description
 C 7 Construction Issue

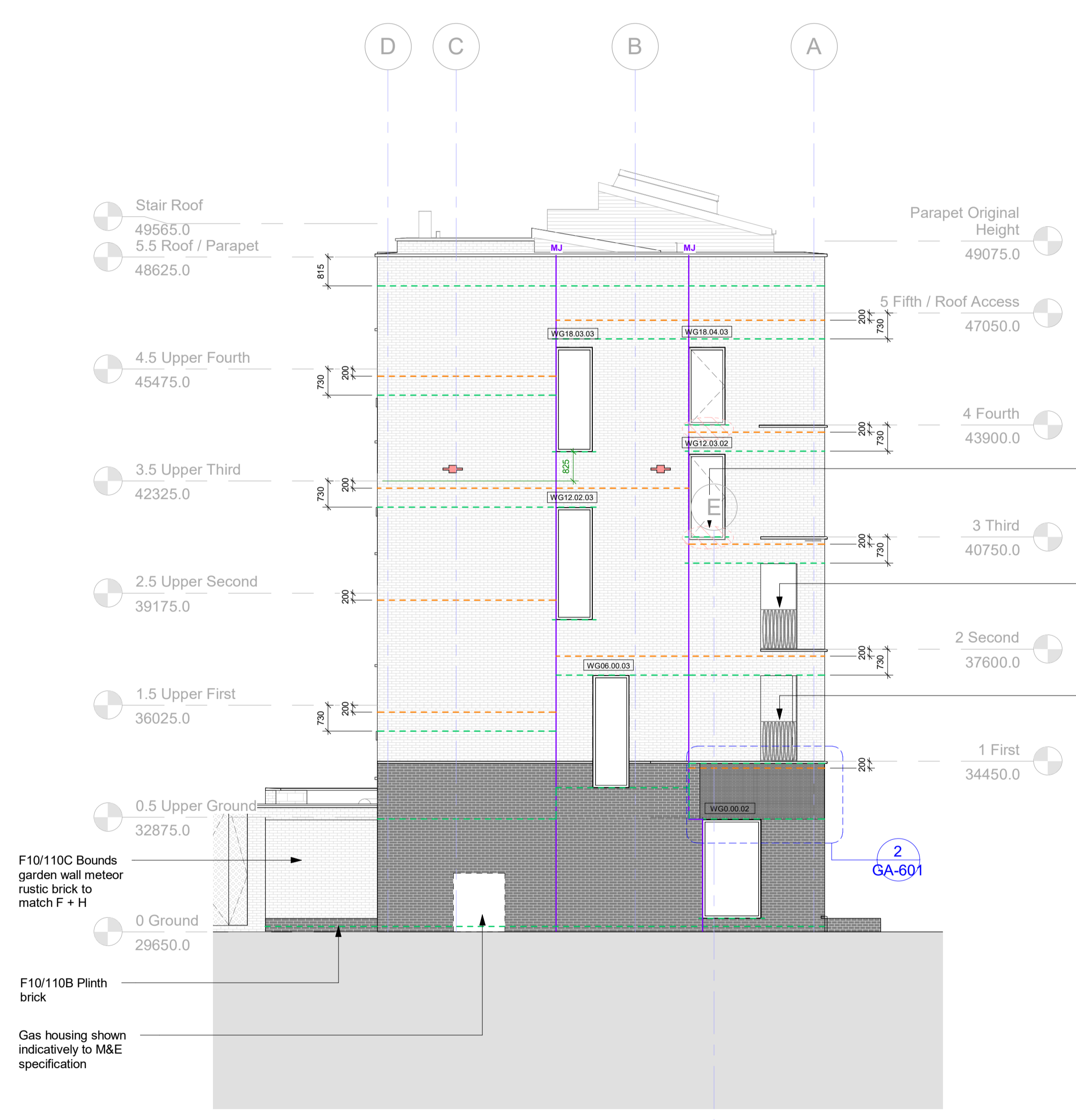
Scale: As indicated @ A1 Date: 30 Nov 15

Drawn by: MH Checked by: EB

Internal Project Ref: 8575 Model Ref: AG-RAC2015-A-G



2 North Elevation - Brick Bond
 1 : 20



1 North Elevation
 1 : 100

