

Brick

Imperial London 68mm Yellow Stock Brick

Example of use:
Moray Mews, Finsbury Park, N7



Photograph showing proposed timber cladding and brick



TECHNICAL INFORMATION

BRICK NAME	CATEGORY 3 COMPRISING OF: Imperial Reclamation Yellow Stock Imperial Yellow Stock Imperial Reclamation Yellow Multi Imperial Yellow Multi
BRICK TYPE	Through colour clay handmade brick.
SPECIFICATION	Manufactured to BS EN 771-1:2011.
SIZE*	230 x 108 x 68mm – 215 x 102 x 65mm
DIMENSIONAL TOLERANCE:	T1
RANGE:	R1
COMPRESSIVE STRENGTH	Mean - 20.9 N/MM ²
WATER ABSORPTION	Mean - 20%
SOLUBLE SALT CLASSIFICATION	S1
BULK DENSITY	1430 kg/m
PACKAGING	Shrink wrapped on wooden pallets in packs of 540.
PACK SIZE; LxWxH	1100 x 1100 x 1100mm Approx.
PACK WEIGHT	1.35 Tonnes Approx.
USAGE	Always mix from several packs, working vertically down the blades, not horizontally across the tops of the packs.
SAMPLES	Samples will be supplied on request.
DURABILITY	F2
PERFORMANCE	The recommendations of good practice made in the relevant British Standards regarding design and workmanship must be fully observed. Liability cannot be accepted for the performance of the product if used outside our recommendations. Guidance on the use of these bricks in specific situations is readily available from us.


0800 610 22 44
sales@imperialbricks.co.uk
www.imperialbricks.co.uk
Imperial bricks are a product of Renew

Imperial Bricks
Technical Information Sheet >>>



SQUARE FEET ARCHITECTS

NEW DWELLINGS TO REAR OF 29/33 ARKWRIGHT ROAD

Planning Condition 3c - Material Information Sheet
December 2020

Timber Cladding

Vertical Hardwood Cladding in Cumaru Sections

Example of use:

St Mary Magdalene , Liverpool Road, N7

Technical Information

Information provided by supplier, Brooks Bros:

Verydurable | Density1060kg/m3

Information from the TRADA (The Timber Research and Development Association) Website:

Wood Type: Hardwood

Moisture Movement: Reported to be stable

Texture: Fine

Use(s): Cladding, Flooring, Heavy structural use, Decking

Colour(s): Reddish brown

The timber

The heartwood is reddish-brown or purplish-brown, with light yellowish-brown or purplish streaks when freshly cut, turning to a variegated reddish and yellowish-brown after drying, but on exposure to light assuming a uniform yellowish-brown or light brown colour. The sapwood is about 50mm wide, distinct from the heartwood and yellowish-brown in colour. The wood has a waxy or oily feel, a fine texture, and irregular and often interlocked grain. It is an extremely hard and heavy wood.

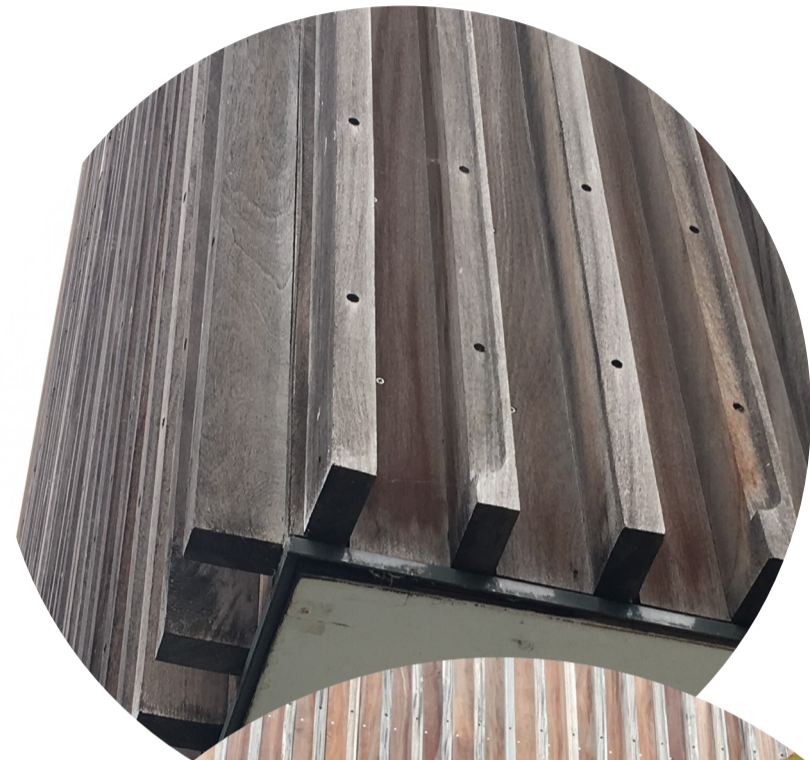
Strength

The strength of the green wood closely resembles that of greenheart, except in tension across the grain and side hardness, in which cumaru is superior. Air dried wood is much stronger than green wood except for an appreciable reduction in cleavage resistance and tensile strength across the grain. In general it is superior to white oak in all properties except cleavage resistance.

Working qualities

Difficult - Cumaru is a heavy, hard, and tough wood which makes it rather difficult to work, but with sharp tools it saws and bores cleanly, and when severely interlocked grain is absent, planes and finishes to a smooth surface. It takes a high polish, but glues poorly.

Photograph showing proposed timber cladding and brick



SQUARE FEET ARCHITECTS

**NEW DWELLINGS TO REAR OF
29/33 ARKWRIGHT ROAD**

Planning Condition 3c - Material Information Sheet

December 2020