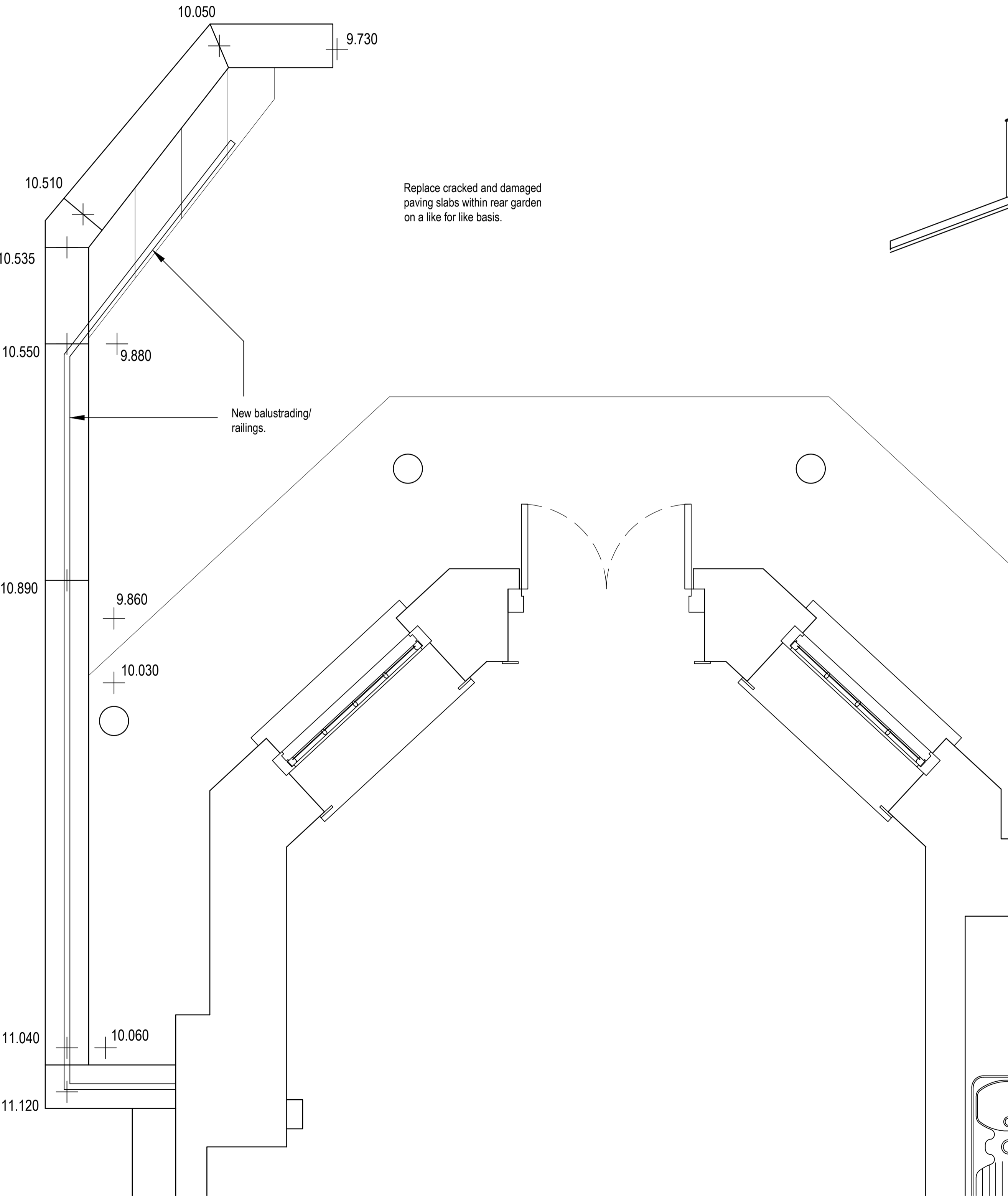
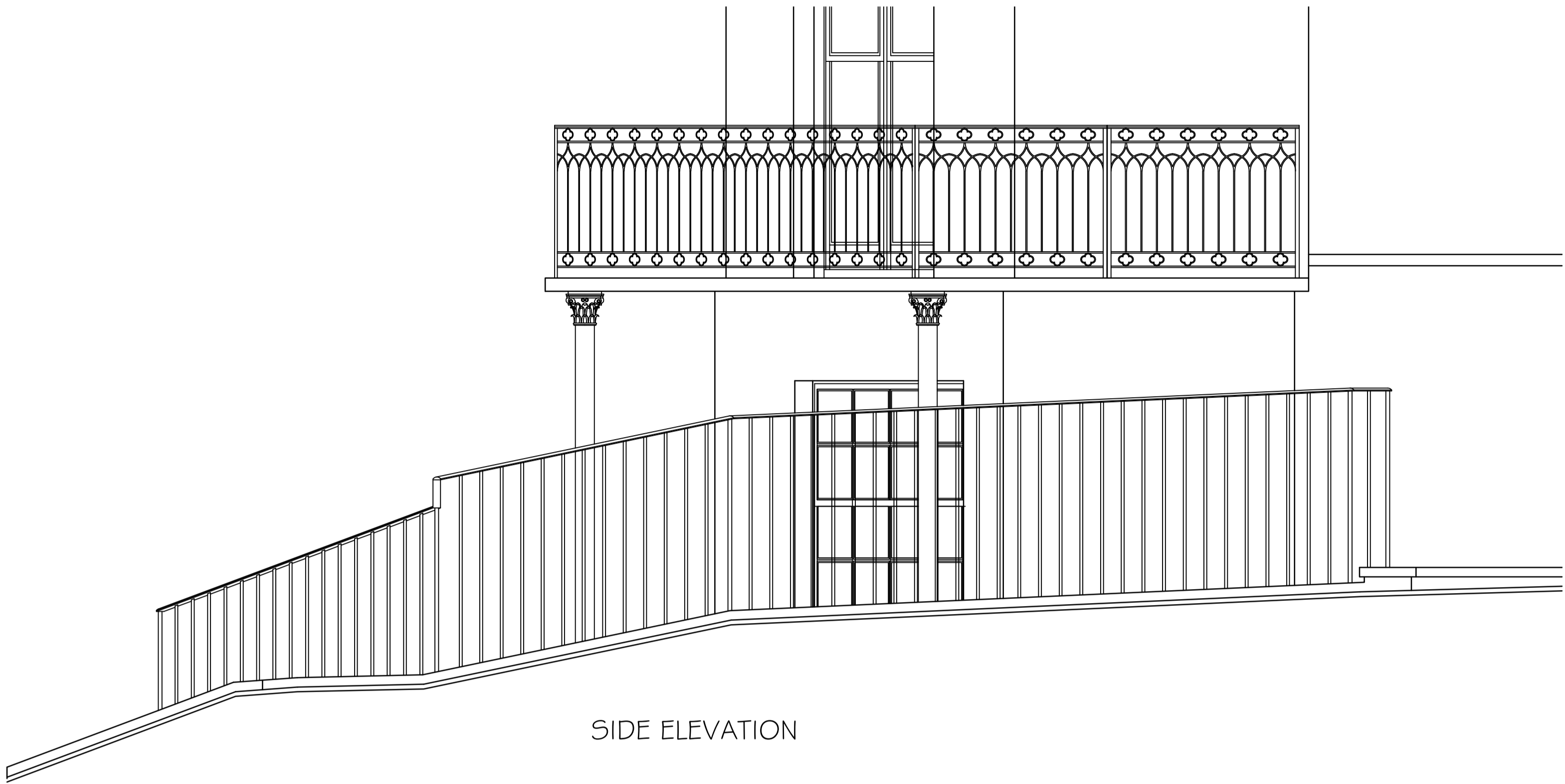


Scale Bar 1:20



PLAN



SIDE ELEVATION



REAR ELEVATION

**Notes**

Where dimensions are not given, drawings must not be scaled and the matter referred to Lambert Smith Hampton.

In the event of any dimensional conflict between Lambert Smith Hampton Drawings, the matter must be referred to Lambert Smith Hampton for clarification.

The Contractor must also refer to any separate Lambert Smith Hampton Specification to be read in conjunction with this drawing.

**New steel railings:**  
New railings are to match on a like for like basis the railings protecting the side entrance well.

**Ornate balustrade:**  
Like for like repairs to ornate balustrade railings to rear balcony at ground floor level. Profile size and style of hand rails spandrels and mouldings to be copied exactly.

**External Paving:**  
Replace cracked and damaged paving slabs within rear garden on like-for-like basis.

Revisions

**Lambert Smith Hampton**

United Kingdom House  
180 Oxford Street  
London  
W1D 1NN  
Telephone: +44 (0)20 7198 2000  
Fax: +44 (0)20 7198 2001  
www.lsh.co.uk

**Client**

HIGH SPEED TWO (HS2) LTD.  
1 CANADA SQUARE  
LONDON E14 5AB

**Project**

4 PARK VILLAGE EAST  
LONDON  
NW1 7PX

Drawing			
NEW RAILING DETAILS AS PROPOSED			
Job No.		DWG No.	
PVE		007	
Scale	Date	Drawn	Checked
A1 @ 1:20	05/10/20	MV	SP