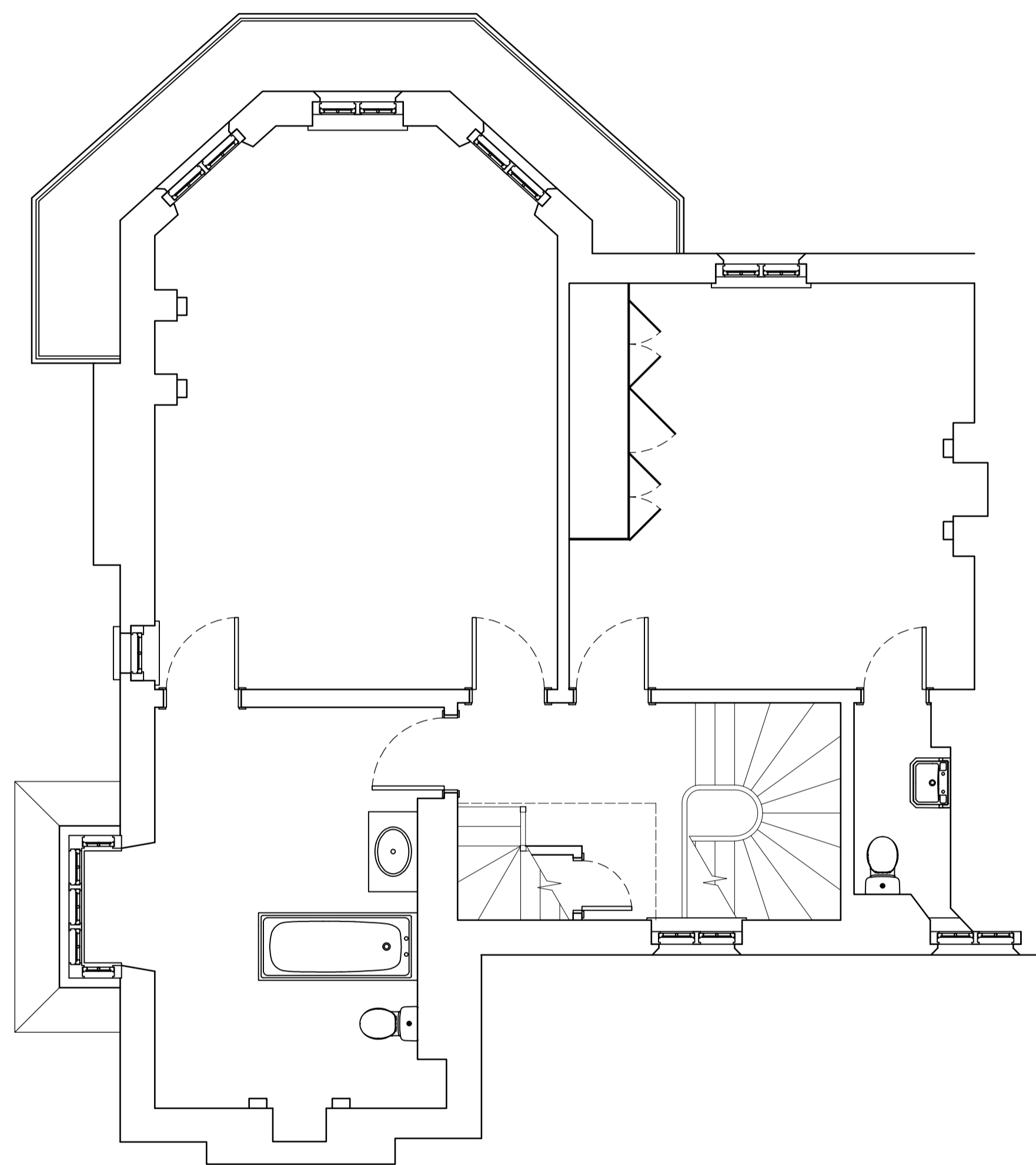
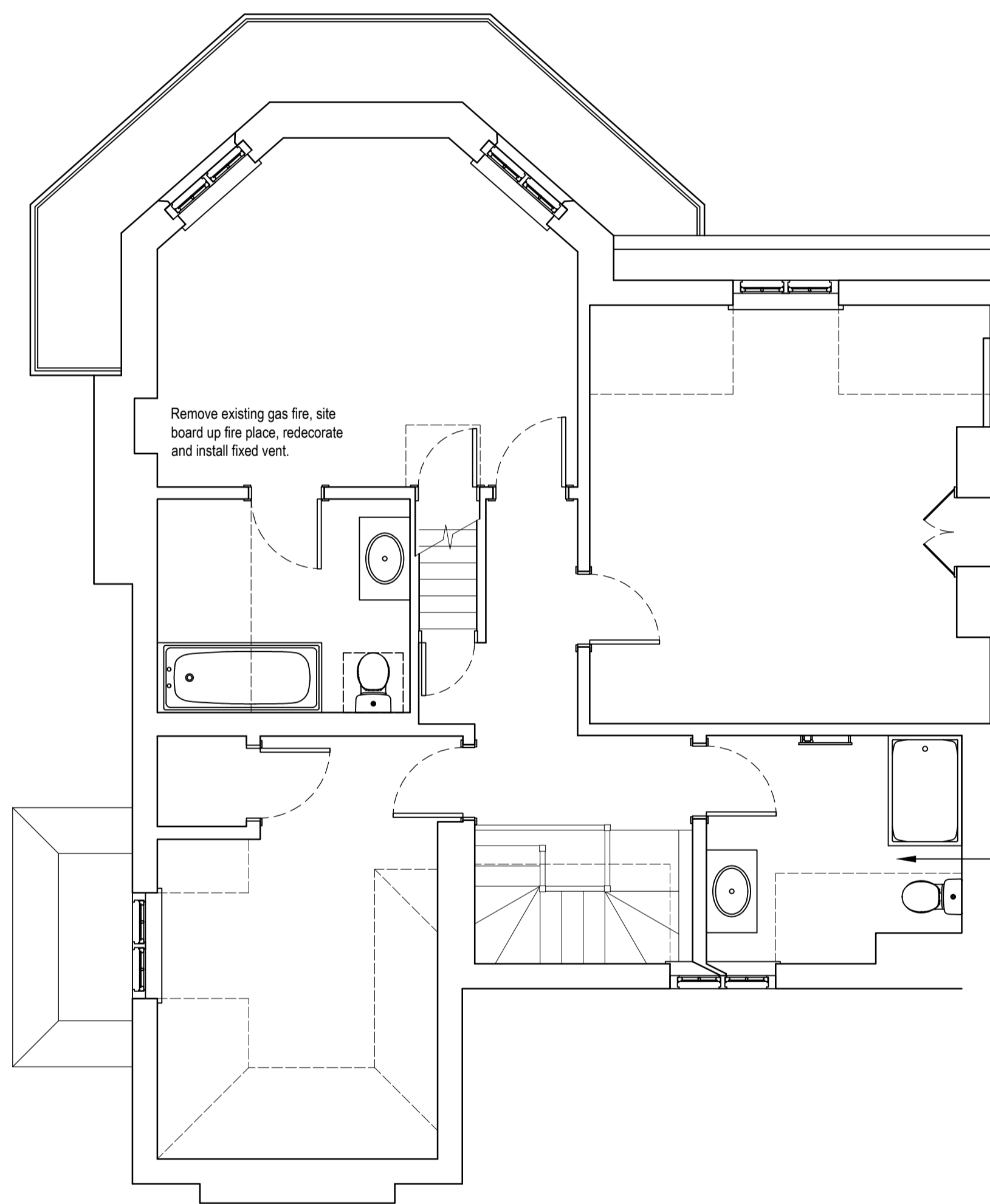


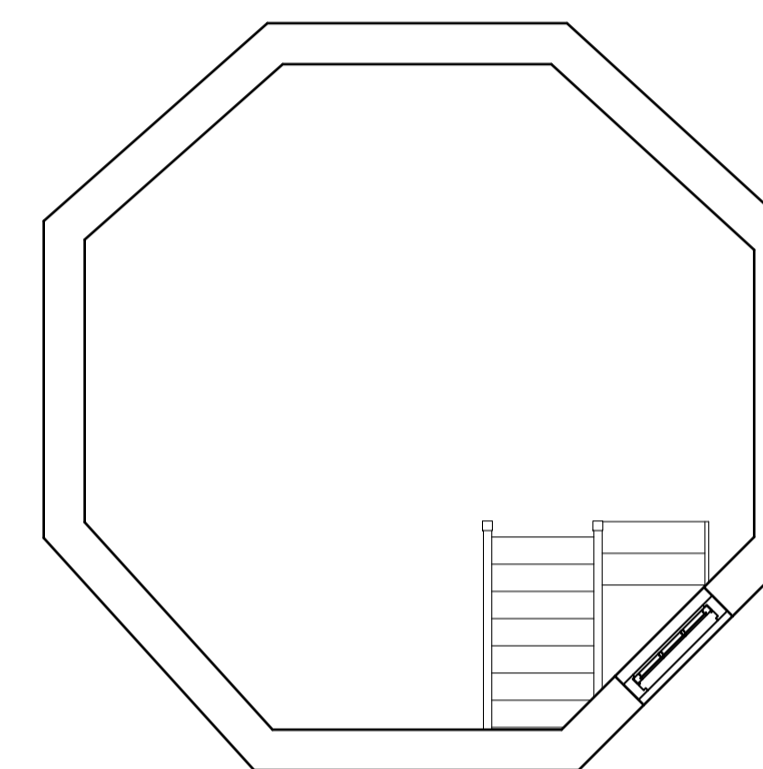
Scale Bar 1:50



FIRST FLOOR PLAN



SECOND FLOOR PLAN



THIRD FLOOR PLAN

Existing sanitary fittings to be removed and new fittings to be installed in accordance with contractors details.

**Notes**

Where dimensions are not given, drawings must not be scaled and the matter referred to Lambert Smith Hampton.

In the event of any dimensional conflict between Lambert Smith Hampton Drawings, the matter must be referred to Lambert Smith Hampton for clarification.

The Contractor must also refer to any separate Lambert Smith Hampton Specification to be read in conjunction with this drawing.

**Second Floor Bathroom:**  
Existing sanitary fittings to be removed and new fittings to be installed in accordance with contractors details.

**Fireplaces:**  
Remove existing gas fires (where indicated), site board up fire place, redecorate and install fixed vent.

**Intercom System:**  
Replace intercom system on a like for like basis in regards numbers and location of handsets/control points (wireless).

**Windows:**  
Install window safety catches/opening restrictors, install safety film to all glazing in all doors, install internal toughened glazed screen fallarrest to lounge low level windows.

**Rainwater Boxing & Guttering:**  
Undertake repairs to defective timber boxing and rainwater gutter on a like-for-like basis with regards to materials, dimensions, style and colour finish.

**Revisions**



United Kingdom House  
180 Oxford Street  
London  
W1D 1NN  
Telephone: +44 (0)20 7198 2000  
Fax: +44 (0)20 7198 2001  
www.lsh.co.uk

**Client**

HIGH SPEED TWO (HS2) LTD.  
1 CANADA SQUARE  
LONDON E14 5AB

**Project**

4 PARK VILLAGE EAST  
LONDON  
NW1 7PX

**Drawing**

FIRST, SECOND & THIRD  
FLOOR PLANS  
AS PROPOSED

Job No.		DWG No.	
PVE		012	
Scale	Date	Drawn	Checked
A1 @ 1:50	05/10/20	MV	SP