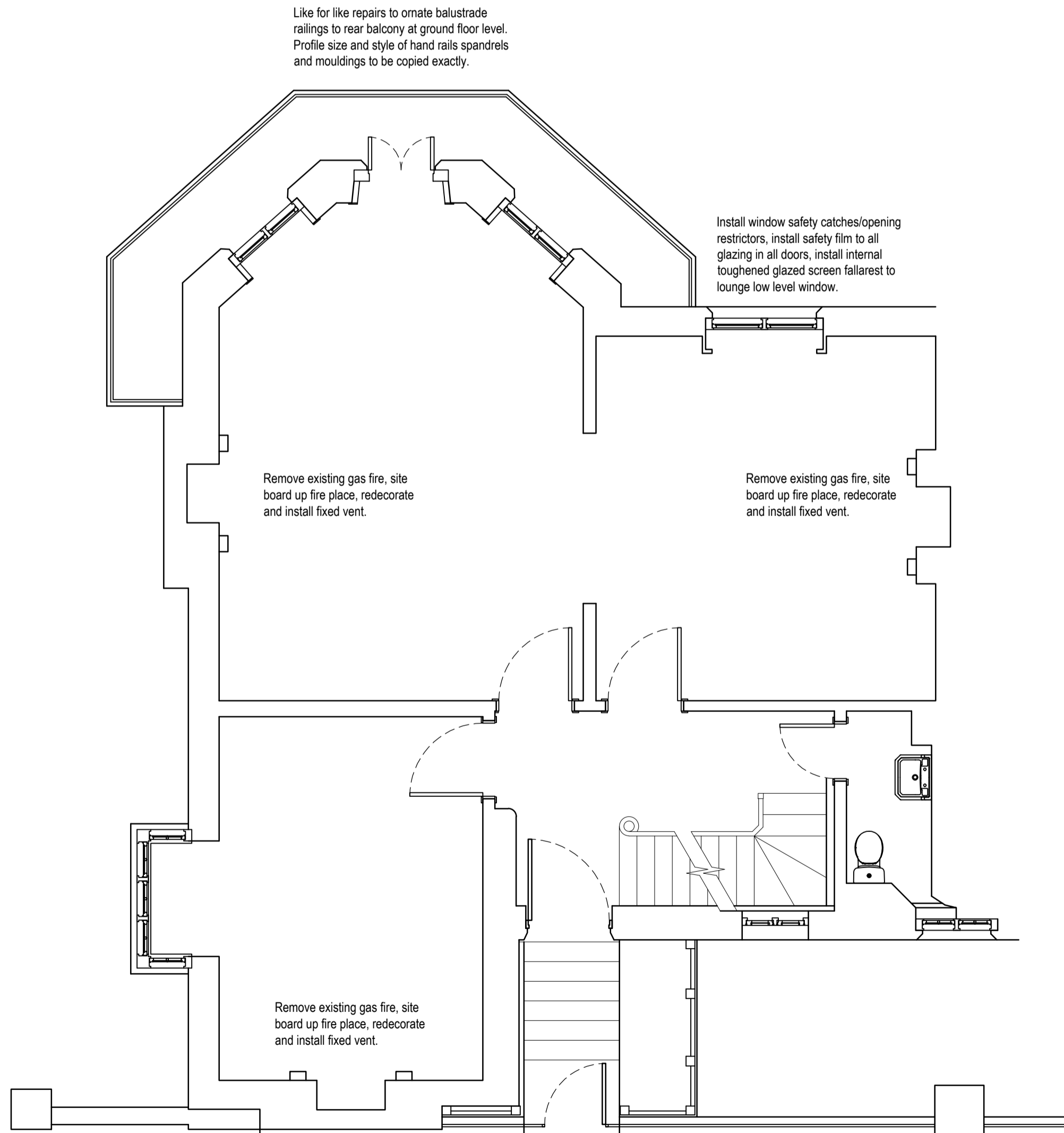



LOWER GROUND FLOOR PLAN



GROUND FLOOR PLAN

Notes			
Where dimensions are not given, drawings must not be scaled and the matter referred to Lambert Smith Hampton.			
In the event of any dimensional conflict between Lambert Smith Hampton Drawings, the matter must be referred to Lambert Smith Hampton for clarification.			
The Contractor must also refer to any separate Lambert Smith Hampton Specification to be read in conjunction with this drawing.			
New Railings: New railings are to match on a like for like basis the railings protecting the side entrance well.			
Ornate Balustrade: Like for like repairs to ornate balustrade railings to rear balcony at ground floor level. Profile size and style of hand rails spandrels and mouldings to be copied exactly.			
External Paving: Replace cracked and damaged paving slabs within rear garden on like-for-like basis.			
External Water Tap: Relocate external garden tap a suitable distance and location from the boiler flue terminal.			
Kitchen: Remove existing kitchen units & appliances and install new units & appliances.			
Fireplaces: Remove existing gas fires (where indicated), site board up fire place, redecorate and install fixed vent.			
Intercom System: Replace intercom system on a like for like basis in regards numbers and location of handsets/control points (wireless).			
Windows: Install window safety catches/opening restrictors, install safety film to all glazing in all doors, install internal toughened glazed screen fallarrest to lounge low level windows.			
Revisions			
			
United Kingdom House 180 Oxford Street London W1D 1NN Telephone: +44 (0)20 7198 2000 Fax: +44 (0)20 7198 2001 www.lsh.co.uk			
Client HIGH SPEED TWO (HS2) LTD. 1 CANADA SQUARE LONDON E14 5AB			
Project 4 PARK VILLAGE EAST LONDON NW1 7PX			
Drawing LOWER GROUND & GROUND FLOOR PLANS AS PROPOSED			
Job No.	DWG No.		
PVE	011		
Scale	Date	Drawn	Checked
A1 @ 1:50	05/10/20	MV	SP