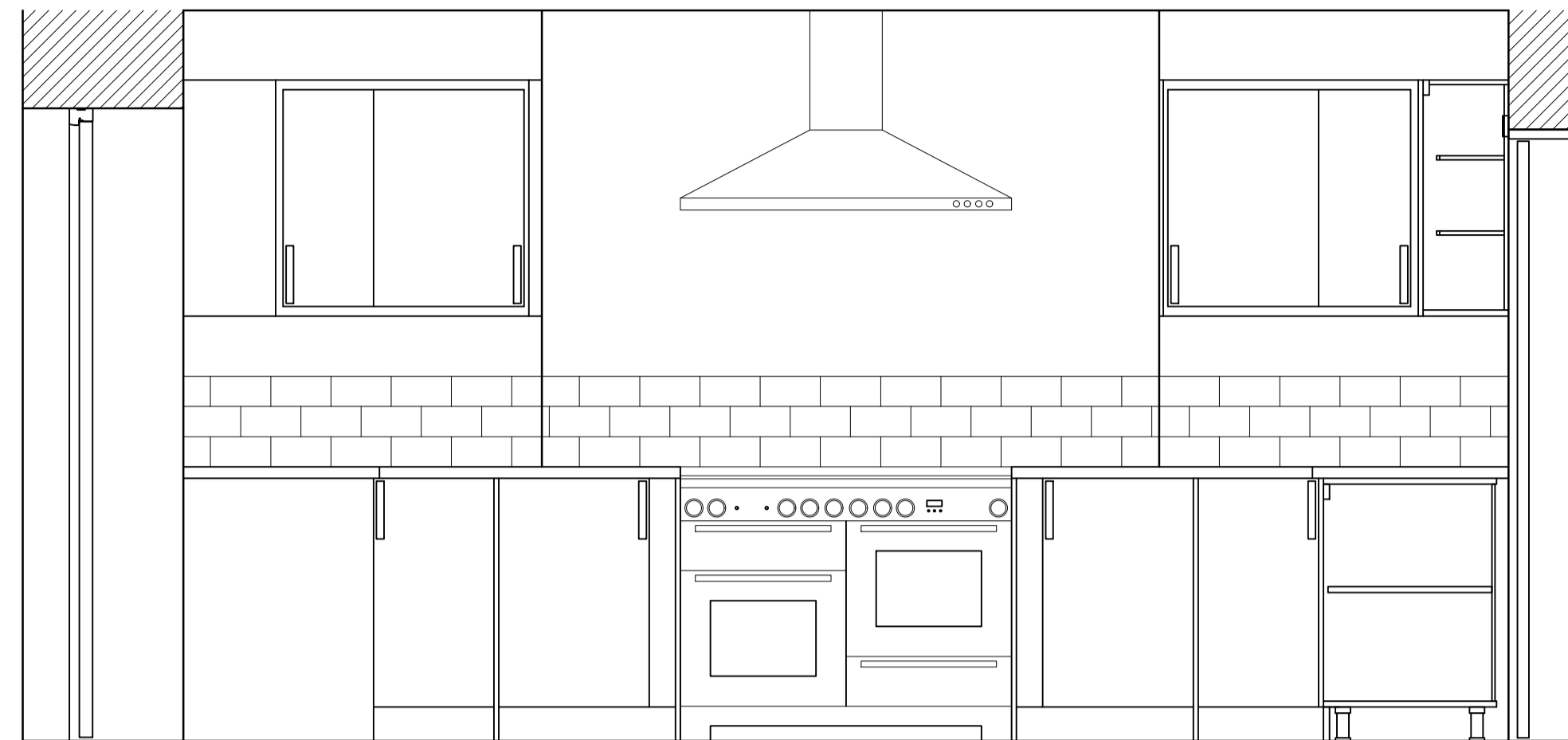
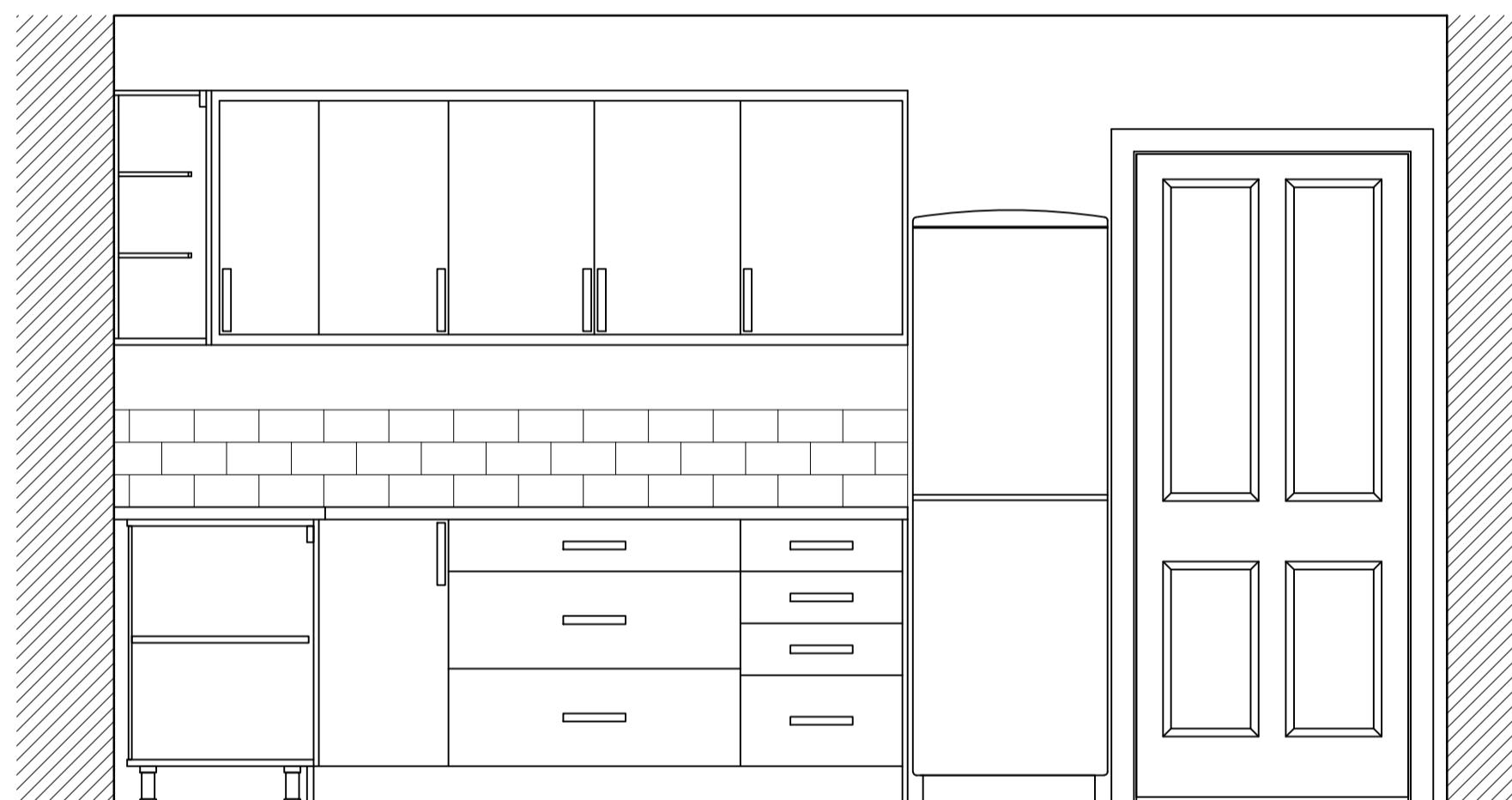




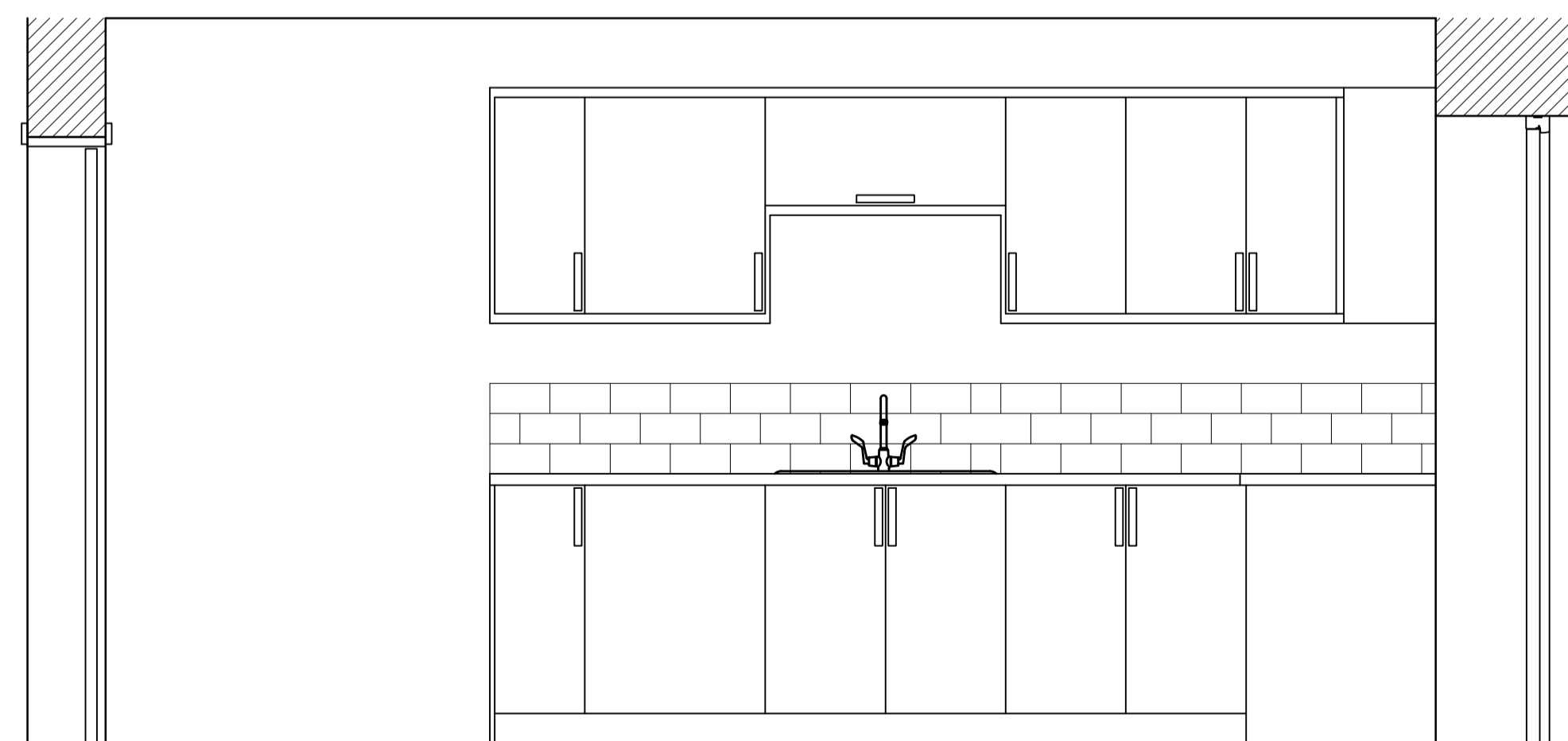
ELEVATION A



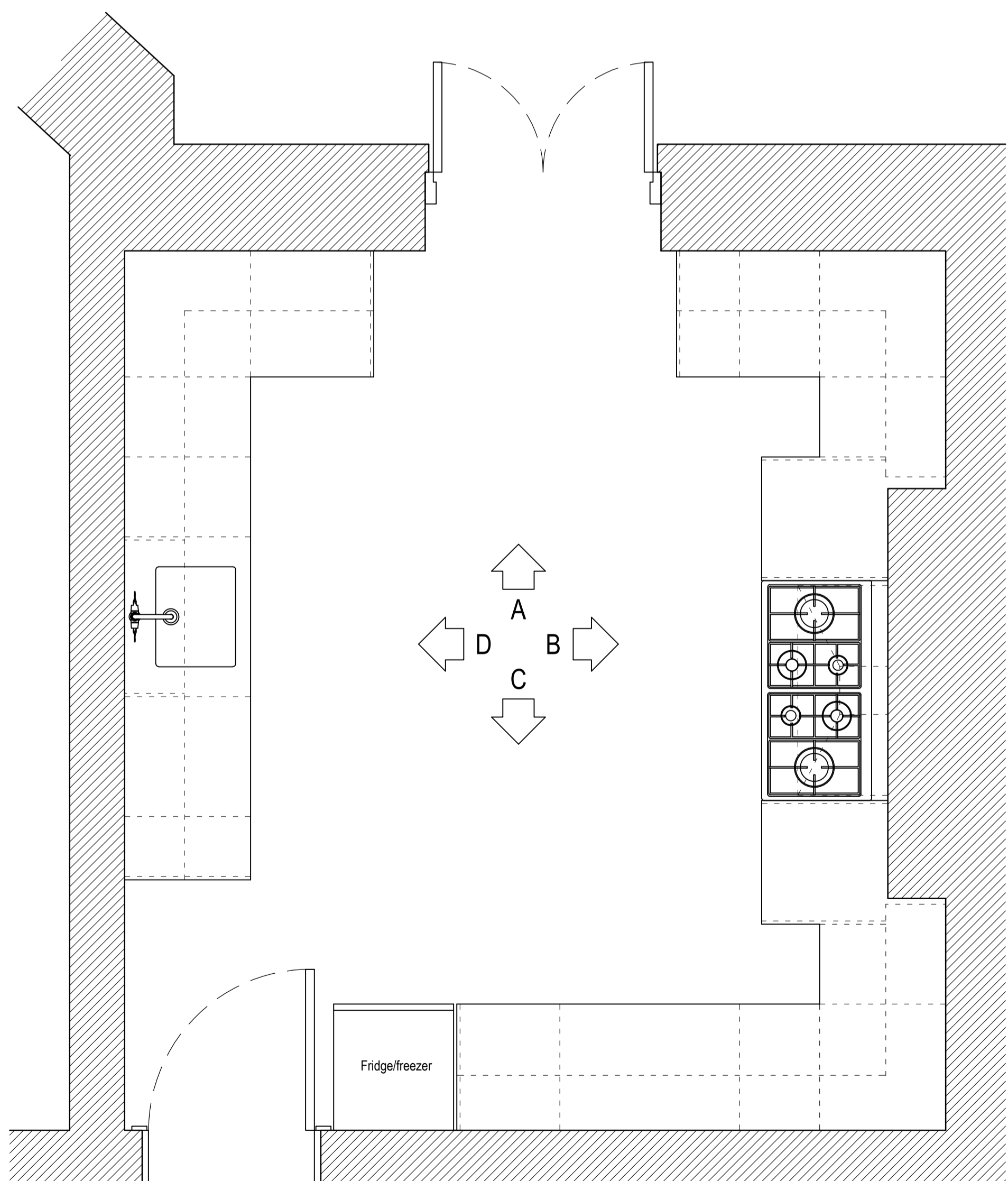
ELEVATION B



ELEVATION C



ELEVATION D



PLAN

3 course 100x200mm
metro tile splashback
Colour - bone

Notes

Where dimensions are not given, drawings must not be scaled and the matter referred to Lambert Smith Hampton.

In the event of any dimensional conflict between Lambert Smith Hampton Drawings, the matter must be referred to Lambert Smith Hampton for clarification.

The Contractor must also refer to any separate Lambert Smith Hampton Specification to be read in conjunction with this drawing.

New Railings:
New railings are to match on a like for like basis the railings protecting the side entrance well.

Revisions



United Kingdom House
180 Oxford Street
London
W1D 1NN
Telephone: +44 (0)20 7198 2000
Fax: +44 (0)20 7198 2001
www.lsh.co.uk

Client

HIGH SPEED TWO (HS2) LTD.
1 CANADA SQUARE
LONDON E14 5AB

Project

4 PARK VILLAGE EAST
LONDON
NW1 7PX

Drawing

KITCHEN LAYOUT
PLAN & ELEVATIONS
AS PROPOSED

Job No.		DWG No.	
PVE		013	
Scale	Date	Drawn	Checked
A1 @ 1:20	10/11/20	MV	JR