

Alan Conisbee & Associates

Chartered Structural Engineers

4 Offord Street London N1 1DH Telephone 071-700 6666

Project

41 DOWNSHIRE Hill
LONDON NW3

Job No

90277

Sheet No

X01

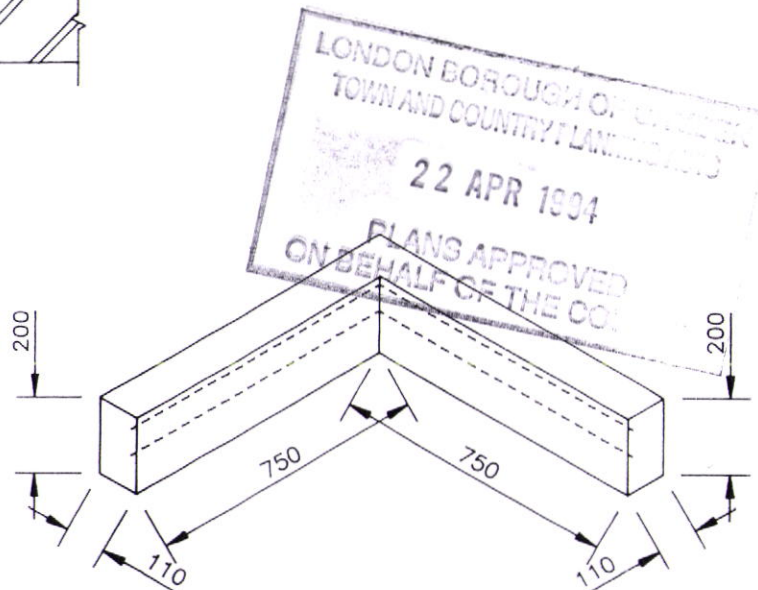
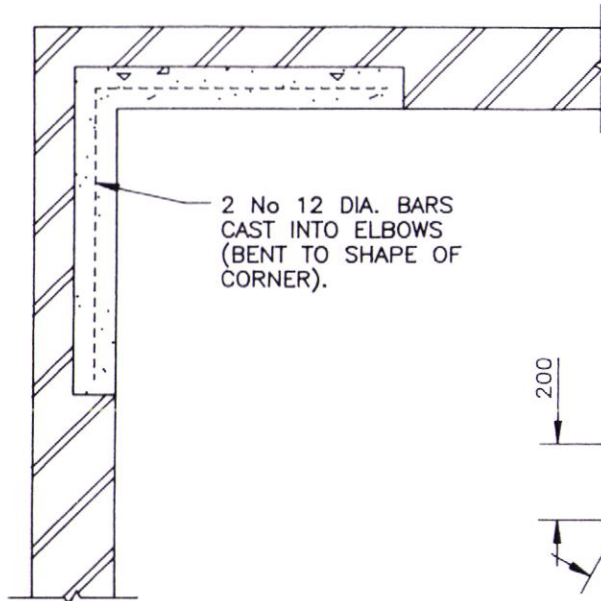
Title

REINFORCED CONCRETE
CORNER ELBOW DETAILS

Date

Engineer

Checked



NOTE:

THE LENGTH OF THE LEGS MAY NEED TO BE INCREASED TO PROVIDE 450 mm ANCHORAGE BEYOND SEVERE FRACTURES REMOTE FROM THE CORNERS.

PLAN VIEW OF
CORNER ELBOW

ISOMETRIC VIEW OF
CORNER ELBOW

HB9470066

- 1) CORNER POCKET, 3 COURSES DEEP, CUT 110 mm IN TO ADJOINING WALLS. MINIMUM LENGTH 750 mm IN EACH WALL.
- 2) POCKET CLEANED OF ALL LOOSE MORTAR AND DUST AND THOROUGHLY WETTED IMMEDIATELY BEFORE CONCRETING.
- 3) POCKET FILLED TO DEPTH OF 200 mm (WITH 1:1:2 CEMENT:SHARP SAND:10 mm PEA SHINGLE AND WATER, SO CONCRETE HAS CONSISTENCY OF PORRIDGE) AND WELL CONSOLIDATED AROUND 2 No 12 DIA. STEEL BARS IN POSITION.
- 4) AFTER CONCRETE HAS HARDENED, REMOVE SHUTTERS AND GENTLY DRY PACK (1:2 CEMENT:SHARP SAND, MOIST) TO FILL REMAINING GAP ABOVE CONCRETE ELBOW.