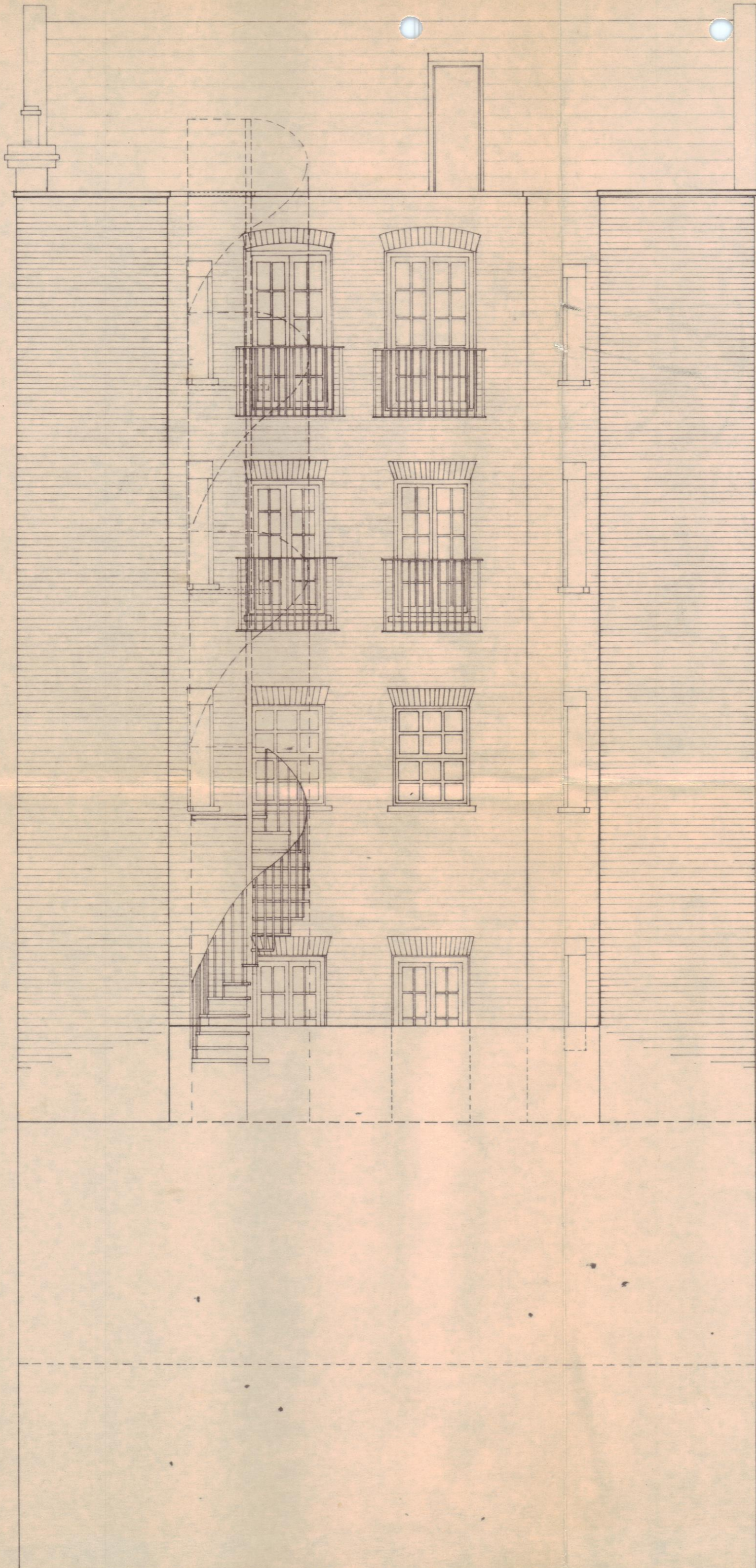


This drawing is not to be scaled—verify all dimensions on site.

Notes

26 SHORTS GARDENS.



LONDON BOROUGH OF CAMDEN  
 TOWN AND COUNTRY PLANNING ACTS  
 - 3 OCT 1984  
 PLANS ~~APPROVED~~  
 NOT APPROVED  
 ON BEHALF OF THE COUNCIL

Revisions

P14/55/D1  
 PL/8400200 +  
 HB/8420100

LONDON BOROUGH OF CAMDEN  
 TOWN AND COUNTRY PLANNING ACTS  
 29 MAY 1984  
 PLANS ~~APPROVED~~  
 NOT APPROVED  
 ON BEHALF OF THE COUNCIL

Project 35/37 NEAL STREET W.C.2.				Title REAR ELEVATION.			
Scale 1:50	Date MAY '83	Drawn APT	Checked	Job No. 232	Drawing No. PA-93	Revision A	Date Issued
<b>Douglas Paskin Associates</b> 7 Cliff Road Studios London NW19AN 01-485 1114							