

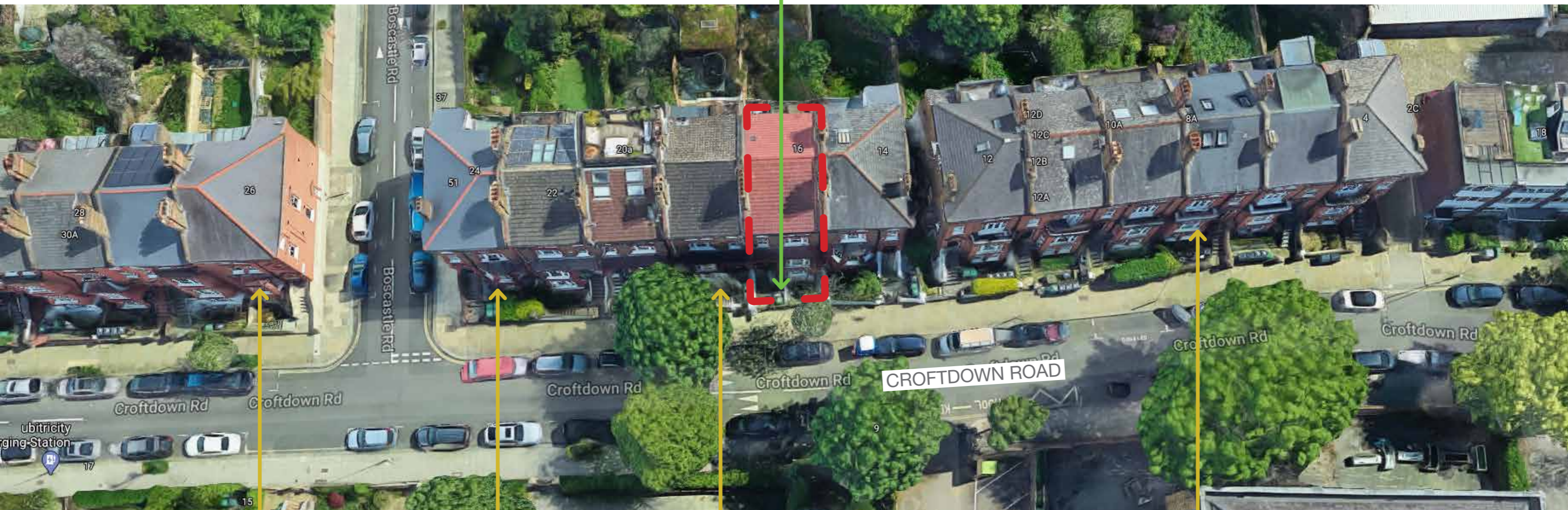


The **D***Haus Company Ltd
16A Croftdown Road
LONDON NW5 1EH
EXTERNAL STAIRCASES TO FRONT ENTRANCE COUNTRYARDS
February 2021

The Site and nearby courtyard staircases that face sideways

As can be seen from the aerial photo below and the photographs on the following pages there are a number of front entrance courtyards that have side facing staircases. It is therefore clear that this is a common feature of the surroundings and this part of the conservation area.

16A Croftdown Road (The Site)
Proposed alteration to front steps into courtyard



24 Croftdown Road
Already has sideways steps
into front courtyard

22 Croftdown Road
Already has sideways steps
into front courtyard

18 Croftdown Road
Already has sideways steps
into front courtyard

6 Croftdown Road
Already has sideways steps
into front courtyard

24 Croftdown Road

Already has sideways steps into front courtyard



22 Croftdown Road

Already has sideways steps into front courtyard



18 Croftdown Road

Already has sideways steps into front courtyard



16 Croftdown Road (Existing)

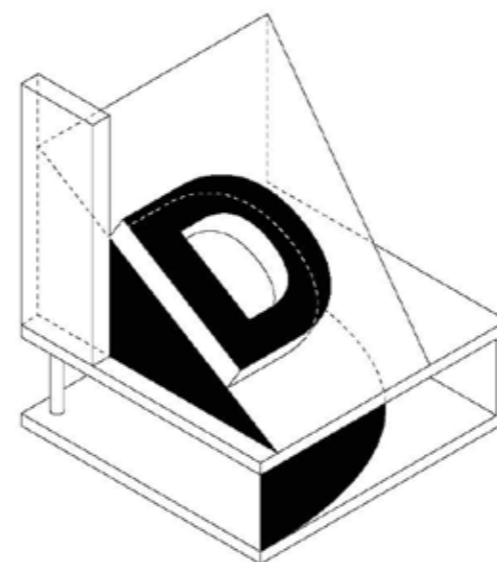
Existing steps are steep and dangerous and do not conform to building regulations



6 Croftdown Road

Already has sideways steps into front courtyard





D*Haus

arb
Architects Registration Board

RIBA 
Chartered Practice

The **D***Haus Company LTD
Unit 13 Old Dairy Court, 17 Crouch Hill, London N4 4AP
mail@thedhaus.com | www.thedhaus.com