



Nationwide Services Include:

- Traffic Management
- Pedestrian Management
- Symology E-Ton Noticing
- Local Authority Liaison
- Barrier Hire
- 24/7 Call Out

T: 01652 640996

W: [www.nationwidetrafficsolutions.co.uk](http://www.nationwidetrafficsolutions.co.uk)

Client:

**Bouygues**

Site Address:

**Maitland Park Villas, London, NW3 2EF**

Drawing No: **SP8543**

Drawn By: **S.Piatt**

Checked By: **K.Moy**

Email: **sam.p@nts ltd.co.uk**

Date: **18.11.2020** Issue: **1** Scale: **N.T.S**

Traffic Management: **3-Way Traffic Lights**

Site Measurements:

(T) Taper Length: **45 degrees**

(L) Longways Clearance: **0.5m**

(S) Sideways Safety Zone: **0.5m**

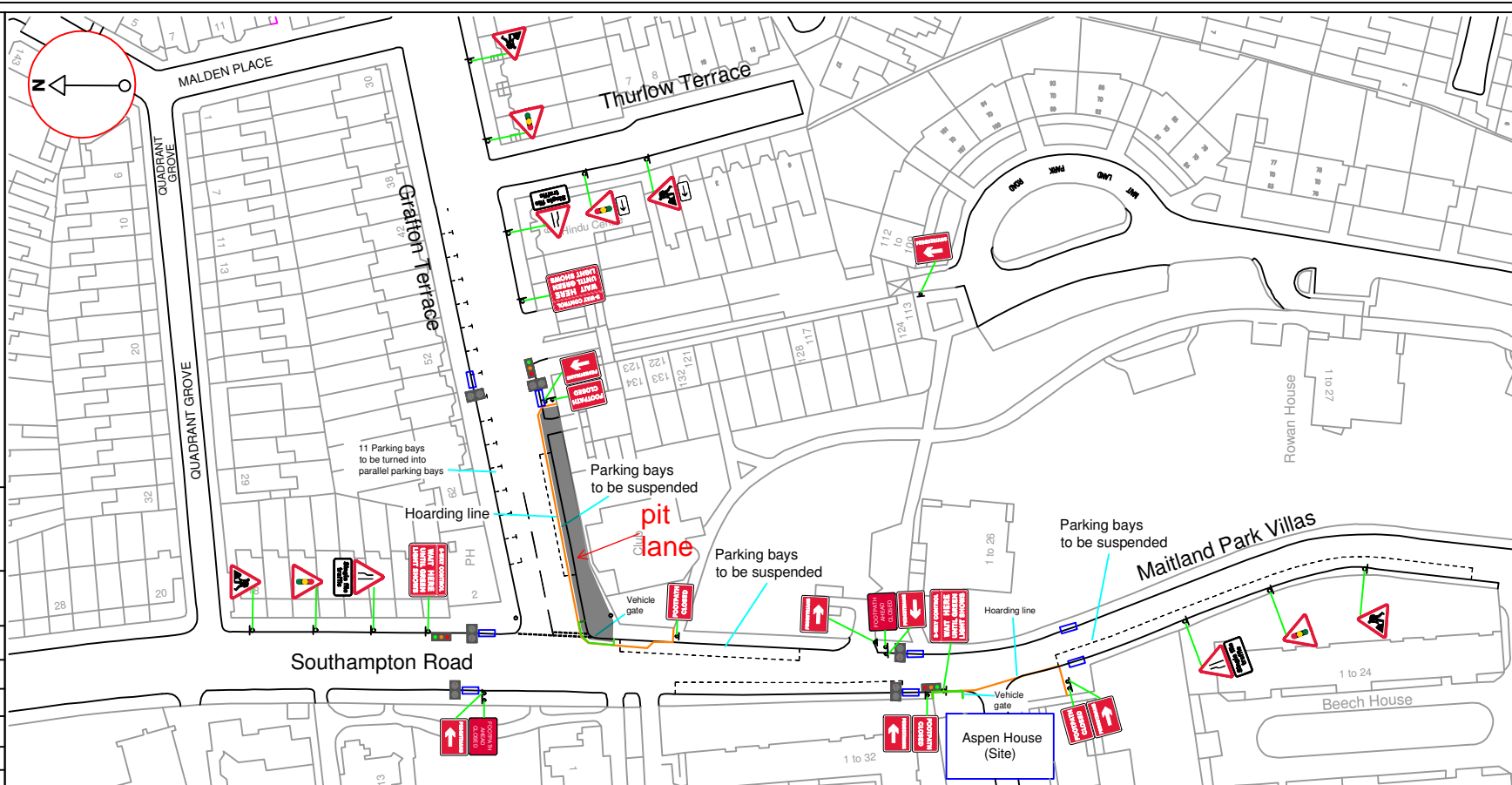
(D) Minimum & Normal Maximum  
siting distance of first sign in  
advance of lead-in taper (metres) **20 - 45m**

Speed of Carriageway: **20mph**

General Key:

••••• Traffic Cones

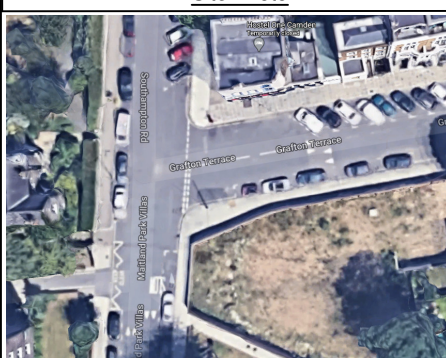
○ Sign Face



Site Location



Site Photo



Bill of Quantities

	x3		x3		x4		x1
	x2		x3		x3		x1
	x1		x4		x2		