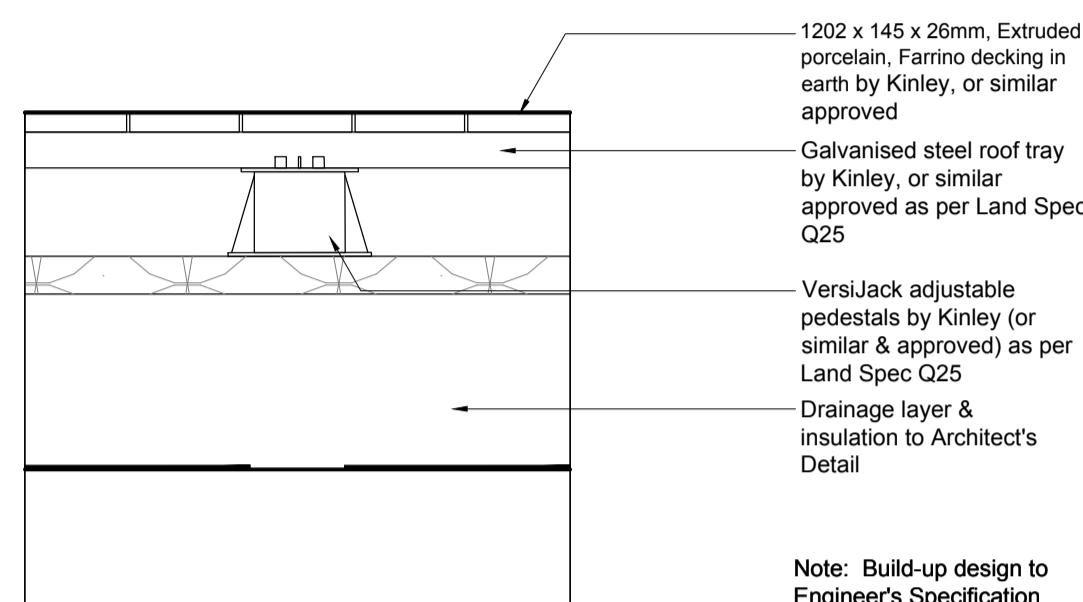
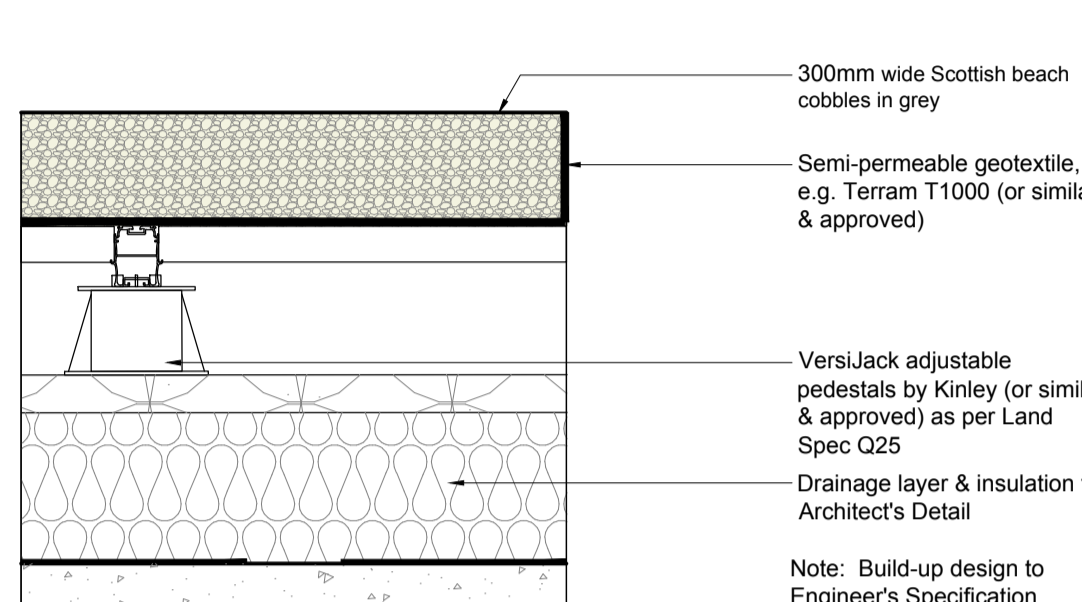


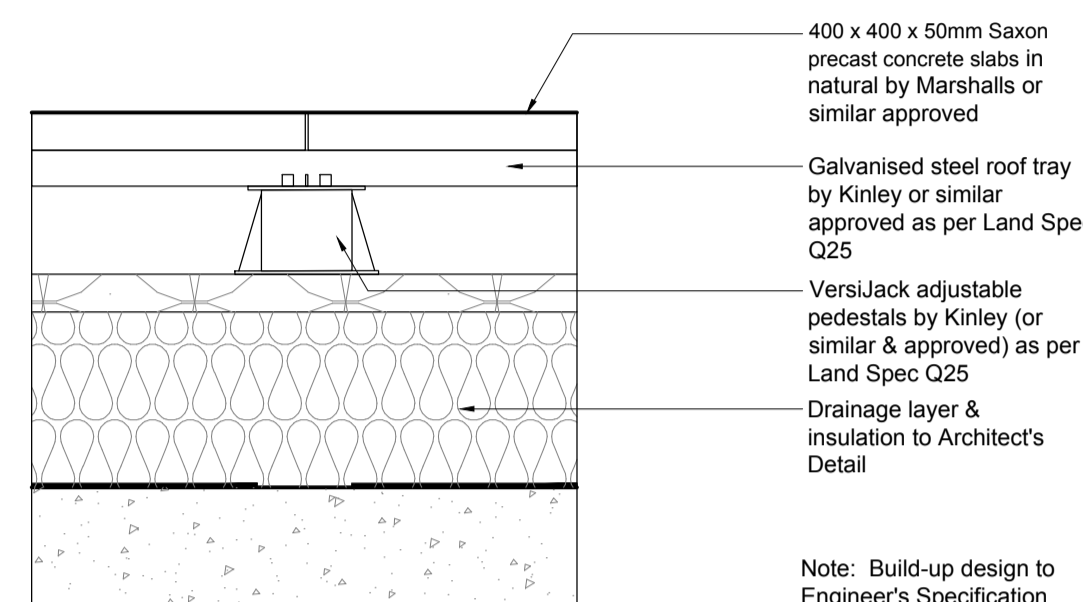
**S5** Porcelain paving tile - Pedestrian  
Scale: 1:10



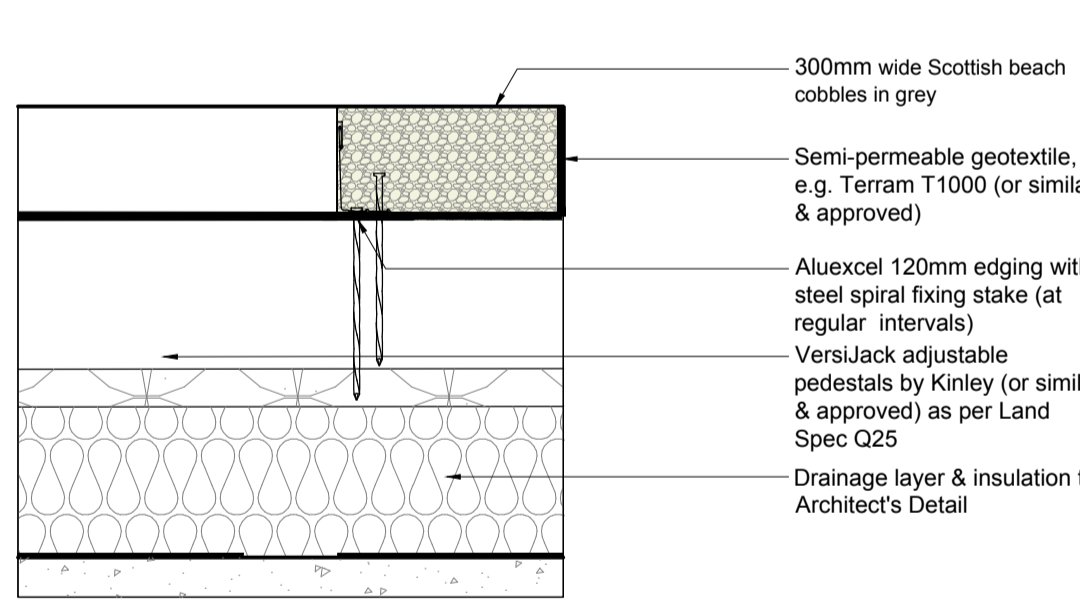
**S6** Porcelain decking - Pedestrian  
Scale: 1:10



**S7** Scottish beach cobbles to maintenance strip and building edges  
Scale: 1:10



**S8** Concrete saxon paving to service areas  
Scale: 1:10



**E4** AluExcel 120mm Edging  
Scale: 1:10

DO NOT SCALE FROM DRAWING

Drawing Information  
Copyright of Place Design + Planning Ltd. 2008  
All Rights Reserved

PLEASE NOTE: Figured dimensions take precedent over scale, do not scale from drawings.

Inform Place Design + Planning Ltd of any discrepancies before works commence on site.

All dimensions to be checked on site

SIGNIFICANT HEALTH, SAFETY & ENVIRONMENTAL INFORMATION RELATING TO CDM

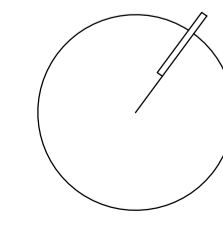
HEALTH:

SAFETY:

ENVIRONMENTAL:

IT IS ASSUMED ALL WORKS WILL BE CARRIED OUT BY A COMPETENT CONTRACTOR WORKING, WHERE APPROPRIATE, TO AN AGREED METHOD STATEMENT

Rev.	Description	date	by	checked



Client  
**ROYAL LONDON ASSET MANAGEMENT**

55 Greenhatch Street  
London  
E20 1UP

Project Title  
**Castlewood House**

Drawing Title  
**Roof Terrace Paving and Edge Details**

Project Stage  
**Tender**

Scale  
1:10

Sheet  
A1

Date  
05/08/20

Drawn by  
BF

Checked by  
GH

Drawing No.  
863-DT-405

Rev. No.  
T00

Client  
**ROYAL LONDON ASSET MANAGEMENT**

55 Greenhatch Street  
London  
E20 1UP

Project Title  
**Castlewood House**

Drawing Title  
**Roof Terrace Paving and Edge Details**

Project Stage  
**Tender**

Scale  
1:10

Sheet  
A1

Date  
05/08/20

Drawn by  
BF

Checked by  
GH

Drawing No.  
863-DT-405

Rev. No.  
T00

PLACE  
Design + Planning Ltd  
16 West Barnes Lane  
London, SW20 0BU, UK  
+44 208944 1940  
+44 208944 1117