

VIKING EASY CUBE 3X3



PRODUCT DESCRIPTION

For the new Viking Easy Cube 3 x 3 m have been given special attention to high – speed and easy installation. This compact and bright product is designed as a multifunctional space where you can prepare food, spend your leisure. On a warm day, open large doors and enjoy unlimited beautiful weather, on a windy day you can admire the landscape from inside. The style and dimensions of this product fit perfectly into a new residential area, a rural landscape or even a cottage environment.

SPECIFICATIONS:

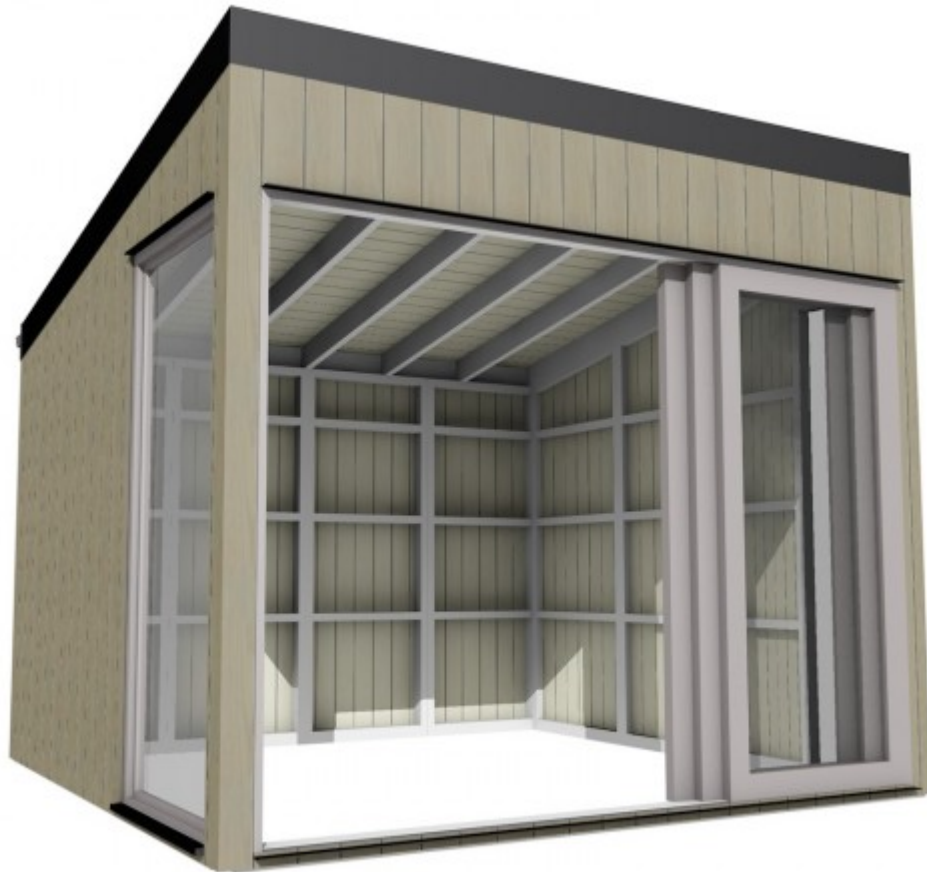
Roof. The roof panels frame 45 x 120 mm is covered with 18 x 145 mm finishing boards. This type of construction withstands 295 kg/m² = 2,95 kN/m². Easy Cube building roof is 2.9 m high and 10% slope. We use MIDA SELF KSK for roof covering, its self-adhesive elastomeric bitumen membrane covering the entire surface. Installation of the rolled roofing is quick, simple and safe way to cover all Cube. All you must do is to unroll, attach with nails, remove protective film and press.

The cube's solid wooden frame: front and back 45 x 95 mm; sides - 45 x 45 mm with 18 x 145 mm finishing boards make the product a sheltered lounge area. The product has aluminum glass wall on each side and three sliding doors (3 – rails) that can easily be opened in two directions!

Walls. The walls are made of spruce wood from FSC-certified spruce forests. Front and back wall frame 45 x 95 mm with outside 18 x 145 mm vertical finishing boards. Side wall frame 45 x 45 mm with outside 18 x 145 mm vertical finishing boards. The bottom parts of wall frames are impregnated.

Aluminum 3 rails sliding doors system Alutech. Sliding parts are framed with aluminum frames, manufactured from "cold" single-chamber of aluminum profile with non-insulating gaskets. Sliding of the aluminum frame is made so that the entire structure is stable. Frames wheels designed for attachment to the motion and has aluminum profiles for vertical and horizontal adjustment, provides a particularly easy movement of moving parts. Sealing brush prevents dust from entering the structure and compensates for vibration in the wind. All moving parts are very easy to remove and put it back, so there is no problem with cleaning glass from the outside. In the closed position system has automatically locked and unlocked positions. Handles and locks built into the aluminum profile, so during the opening, the glass always remains clean. This is single-chamber aluminum system. The thickness of tempered glass 4 mm.

Aluminium glass wall "Alutech". Panel size is 1000 x 2200 mm; Frame wide: 40 mm; Glazing: single glass; Glass thickness: 4 mm. Color: metallic/white.



SPECIFICATION

People	6 persons
Timber	Spruce
Shape	Rectangle
Room	1
Inside area	9.0 m ²
Total height	2855 mm
Exterior Cladding	18 mm
External dimension	3286 x 3154 mm
Door size	3000 x 2200 mm
Window size	1000 x 2200 mm

STANDARD SET

Roof panels from spruce;

Self-adhesive bitumen membrane for roof covering;

Roof, door and windows tin finishing;

Wall panels from spruce with impregnated bottom parts;

2 pcs of aluminum glass wall Alutech (1000 x 2200 mm);

1 pc of aluminum sliding doors system Alutech (3 rails).

DELIVERY

Size of pallets (LxWxH)

3.4 x 1.2 x 2.5 m

Weight

900 kg

Viking Easy cube 3 x 3 m is delivered to the customer **not assembled**, but with detailed assembly instructions and drawings, and packed on a pallet (KIT).

OPTIONS

FLOOR FOR VIKING EASY CUBES

- Terrace floor made from corrugated spruce wood with frame;
- Tongue and groove floors.

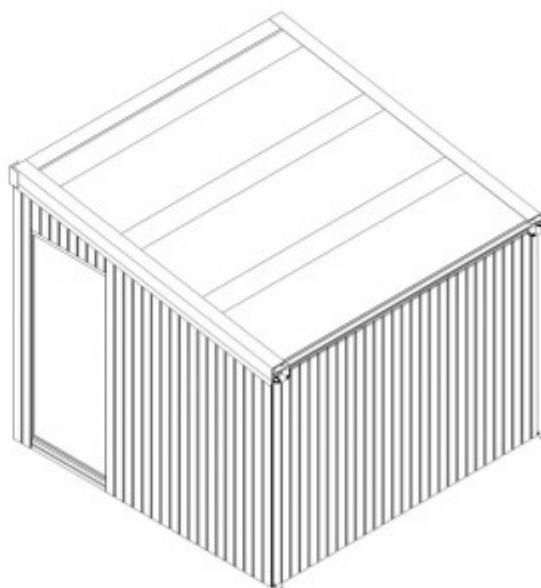
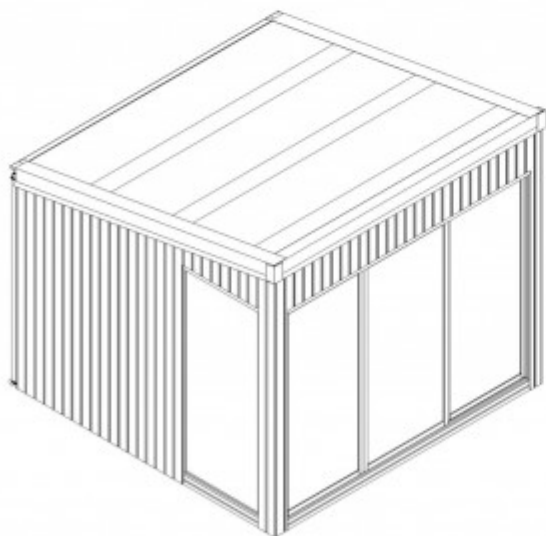
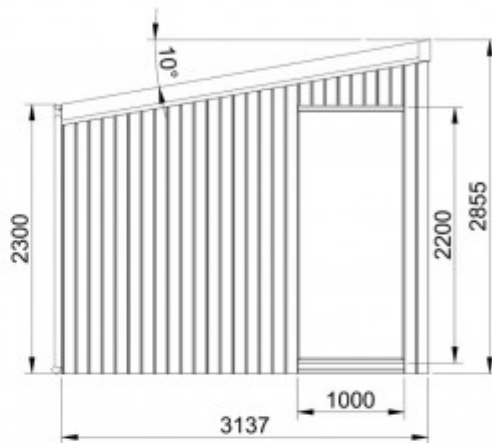
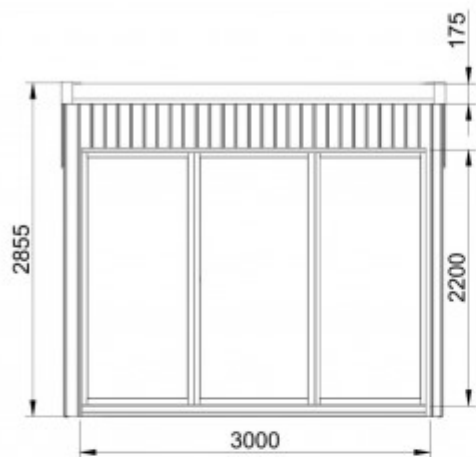


ACCESSORIES

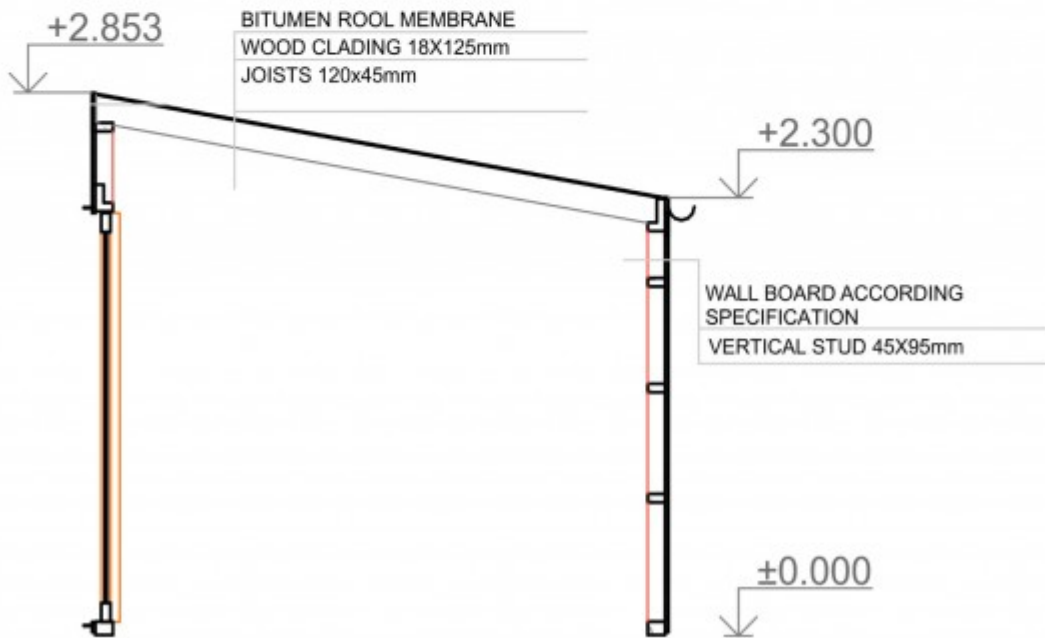
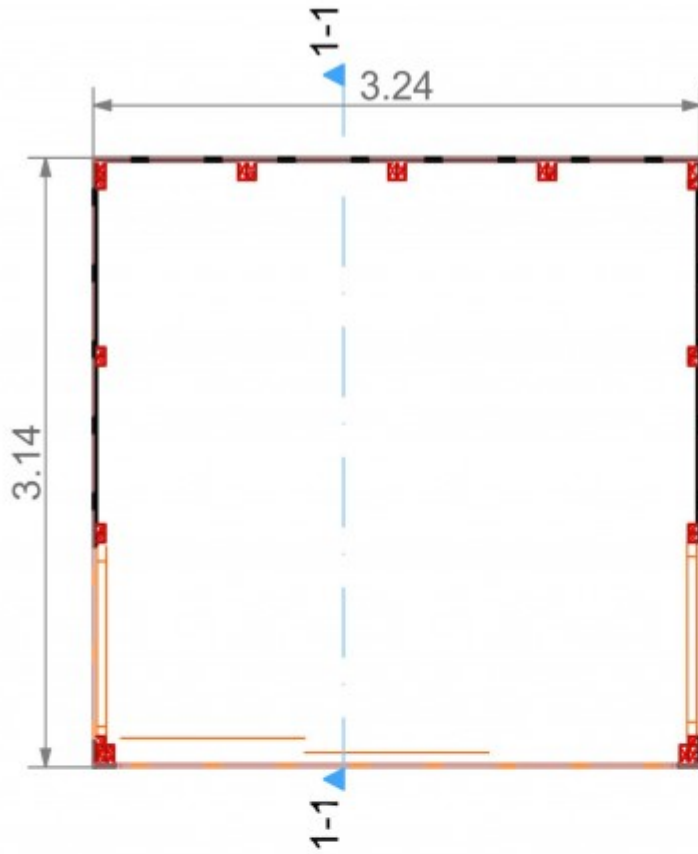


Rainwater Pipes*

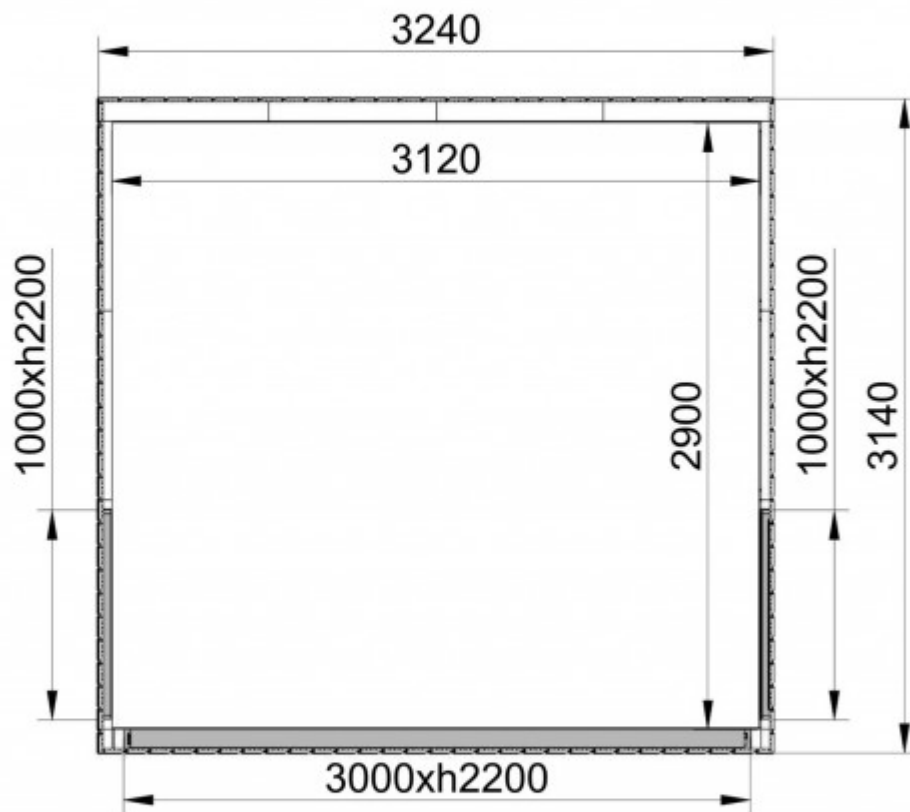
DRAWINGS



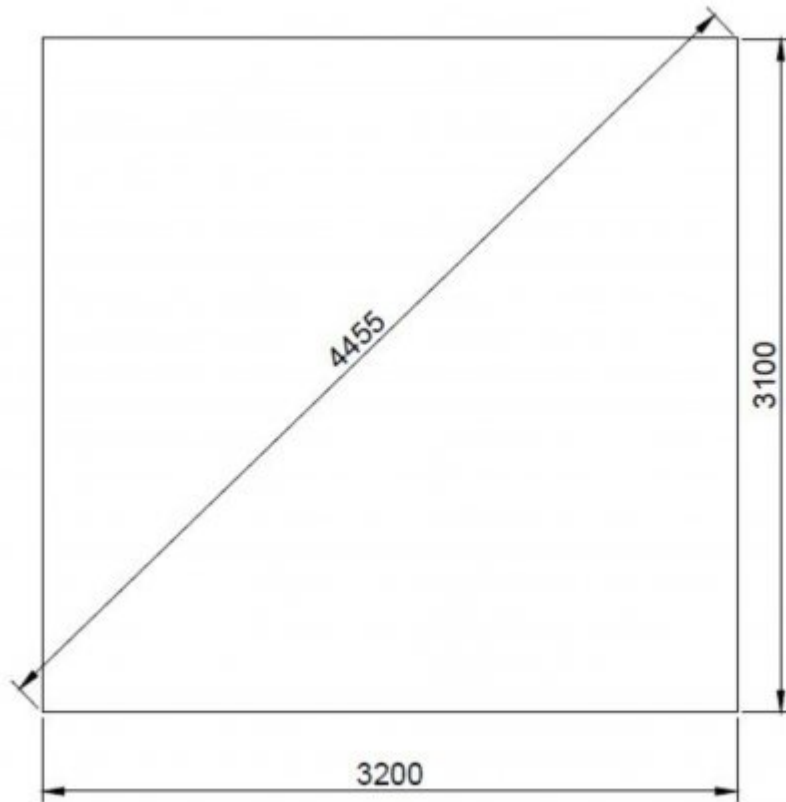
DRAWINGS



DRAWINGS



FOUNDATION



Foundation. It is very important to have a proper foundation for your cube 3 x 3 m. Therefore we recommend making the foundation according to the sketches here. First of all, foundation must be prepared according to the landscape and ground conditions. Consult a qualified builder or an engineer to prepare a proper foundation, which fits your location. Make sure to complete the site preparation and the foundation before unpacking and assembling the cube.

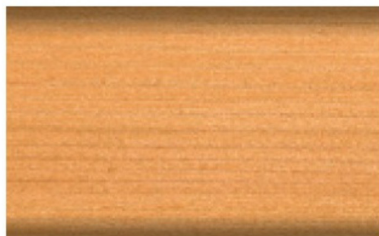
PAINTING

COLOR CARD

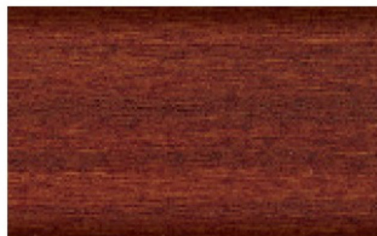
EXTERIOR WOOD STAIN COLORS



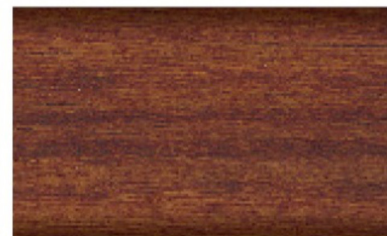
Water-based, quick drying premium total protection for wood outside.
Thin layer varnish – 3 in 1: impregnation, primer, and varnish!



PINE / LARCH RC260



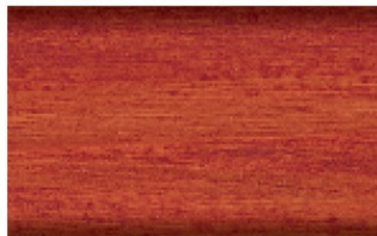
TEAK RC545



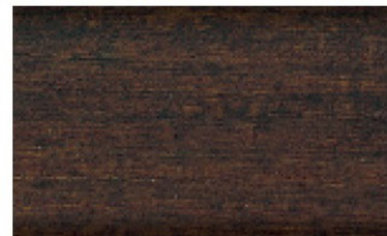
CHESTNUT RC555



FIR GREEN RC960



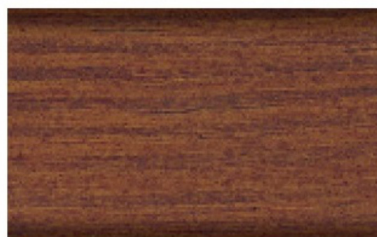
MAHAGONY RC565



PALISANDER RC720



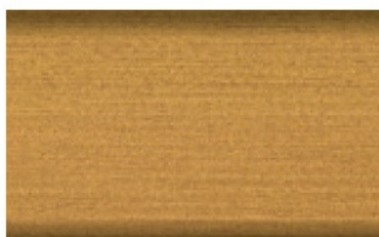
SILVER GREY RC970



NUT WOOD RC660



PINE RC270



RUSTIC OAK RC360



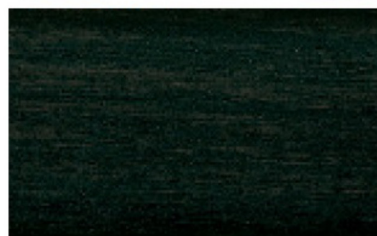
LIGHT OAK RC365



HEMLOCK RC120



WHITE RC990



EBONY RC790



SALT GREEN RC965

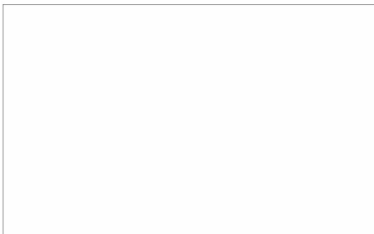
PLEASE NOTE: The colors shown in the catalogue and website may not 100% match the color you will receive.
The color of the wood material affects the final color.

PAINTING

COLOR CARD

EXTERIOR WOOD PAINT COLORS

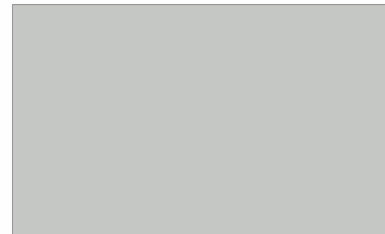
Weather protection, water-based paints. High-performance and environmentally friendly.



WHITE / RAL 9016



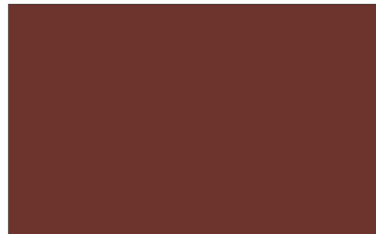
ANTRACITE GREY / RAL 7016



LIGHT GREY / RAL 7035



DUSTY GREY / RAL 7037



OXIDE RED / RAL 3009



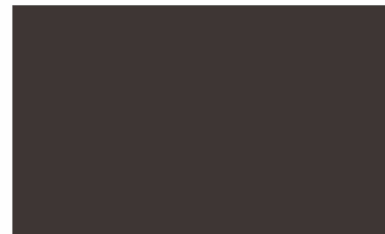
JET BLACK / RAL 9005



MOSS GREEN / RAL 6005



AZURE BLUE / RAL 5009



GREY BROWN / RAL 8019



BROWN RED / RAL 3011

PLEASE NOTE: The colors shown in the catalogue and website may not 100% match the color you will receive. The color of the wood material affects the final color.

PAINTING

AUTOMATIC MACHINE SPRAY TECHNOLOGY

Benefits

One of the main and most obvious benefits of using a paint machine is the speed and flexibility at which we can suggest our painting service for all of our products. A spray paint machine can get the work done faster and more consistently than manually painting. While the machine works faster, it improving quality too – sprayers produce an even coat of paint, leaving a high-quality finish.

With our painting service from now, we can suggest to our client's maximum flexibility! Not assembled products as Grill cabins, Pavilions, Camping pods, and other products of any size you can order painted too!

PROFESSIONAL SPRAY

The high-quality preservative finish is professionally spray applied in the factory to one side of the wood. The product is treated in your choice of color (one color for all product).

STAIN | PAINT

Which type of painting should i Use?

Properly painting and impregnating is one of the most important things to consider when thinking about how to extend your product lifetime.

Paint and natural wood finish instantly spruce up the aesthetics of your product.

The decision you will need to make is if you want to use a water-based wood stain or paint. Both will offer you UV protection. The wood stains will allow the texture of the

wood to show through and many are now available in a vast range of colors, however, paints will give you an intensive color, but will cover the grain and texture of the wood.

USAGE AND MAINTENANCE

Things to note when using the product:

- Products which are used for staying overnight should be equipped with a smoke alarm and a extinguisher;
- Product owner is responsible for the security and should work out a rescue plan for the camping site;
- Remember that using heating appliances or temporary camping stoves this isn't just a fire risk, but a risk of carbon monoxide poisoning as well.

MAINTENANCE. You should not forget that wood is a natural material, it changes move depending on weather conditions. Large and small cracks, color tone differences and changes, as well as a changing structure of wood are not errors, but a result of wood growing and a feature of wood as a natural material. Natural wood (not impregnated) becomes grayish after having been left untouched for a while and can be turn blue and become moldy. You should immediately process them with wood impregnations to protect the wooden details of our produced products.

- Like any our product, our produced furniture's needs to be looked after and processed with a wood impregnation agent or painted if you want it to last for years. Regular cleaning of your furniture is necessary to prevent mold. General warm soapy water is enough if done regularly;
- If necessary, outside doors must be adjusted by the customer;
- If you do not use your Camping Product often we highly recommend to use the installation of our vent to stop condensation;
- If you find a sap pocket open during the life of your Product - you can allow it to dry naturally and then cut the sap off with a blade.



Misko 25, LT-85302 Venta, Lithuania
info@vikingindustrier.com