

Arthur Stanley House

Planning Conditions Response_04 Glazed Bricks



Introduction

Purpose of report:

**Re: Arthur Stanley House, Tottenham Street - Facing bricks comments
2020/2891/P & 2020/3747/P**

Condition No. 04 - Glazed brick sample

Further to the letter of approval for the primary brick sent by Daniel Pope 26.11.2020, this information aims to supplement Condition 04 and confirm the specified feature brick to be used at the main residential entrance along Tottenham Mews.

COVID 19

Due to the current COVID pandemic and the associated limitations on travel this document has been prepared to satisfy planning condition 04 remotely.

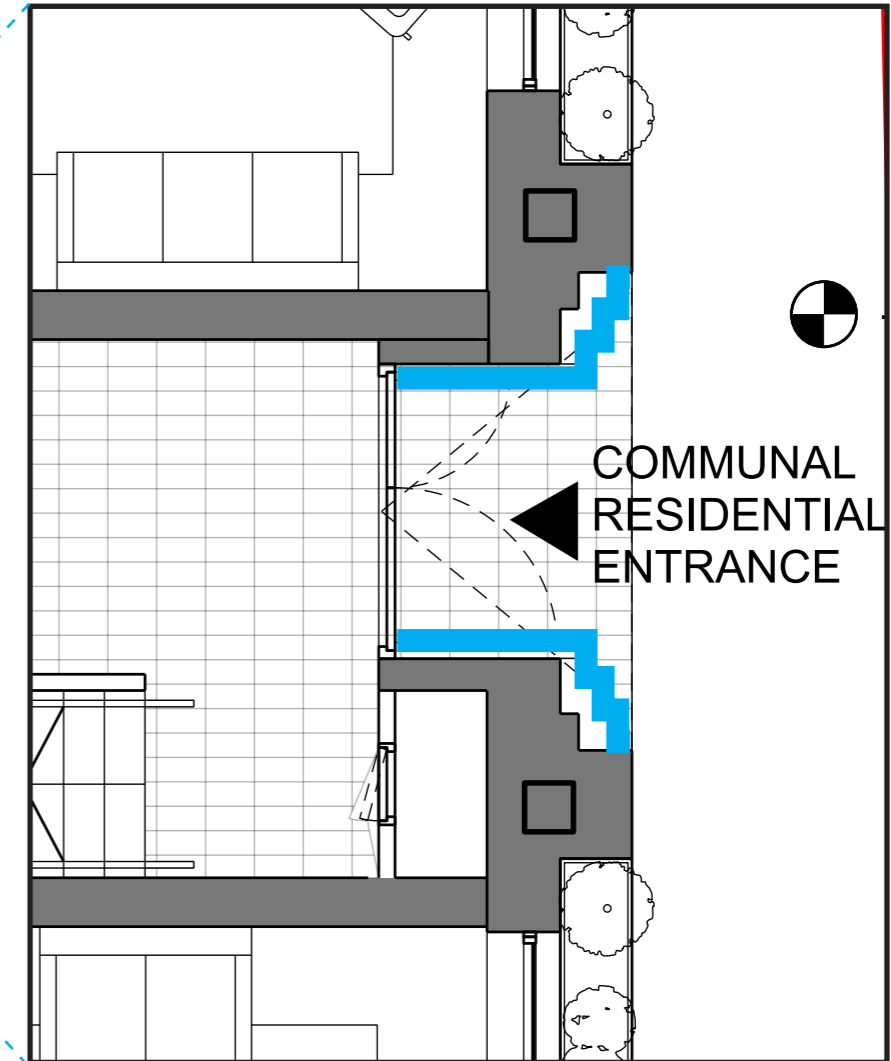
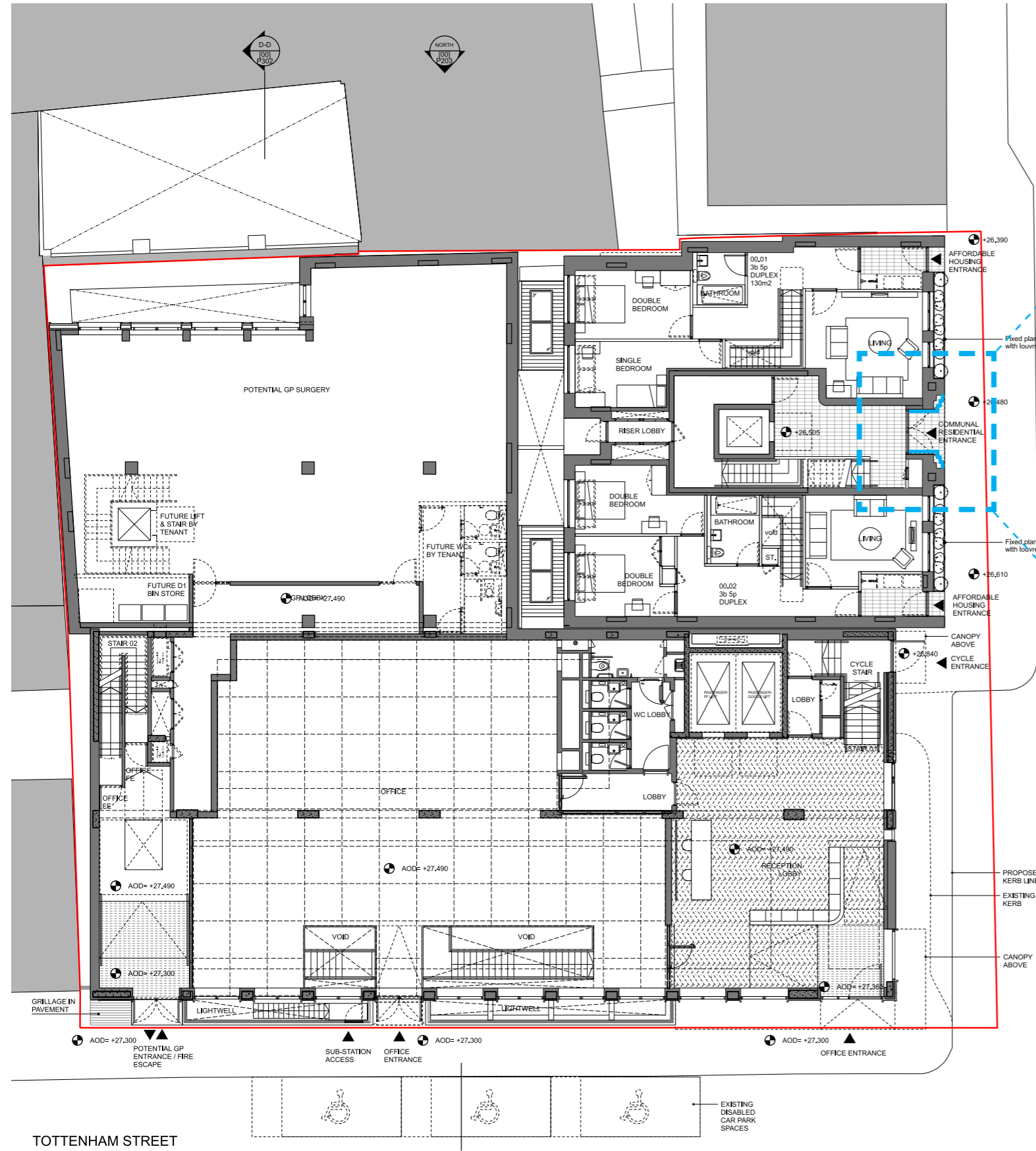
The samples photographed in this report have been prepared on site by the contractor and will be retained should a physical review be required by LBC.



Selection of samples on site

Residential Main Entrance

Ground Floor Plan



Plan extract of residential entrance

Scope of glazed bricks highlighted in blue

Proposed Ground Floor Plan

Residential Main Entrance

Bay Elevation

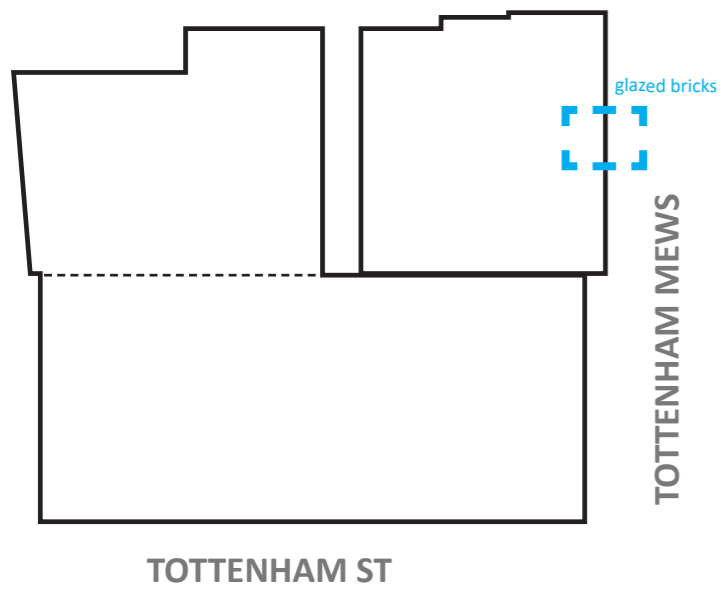


01 Light green glazed brick
Pyrolave, Nimbus

02 Pale grey concrete brick
Edenhall, Castleton white. **Consent received 26.11.20**

03 PPC bronze metal frames to windows and doors
Consent received 26.11.20

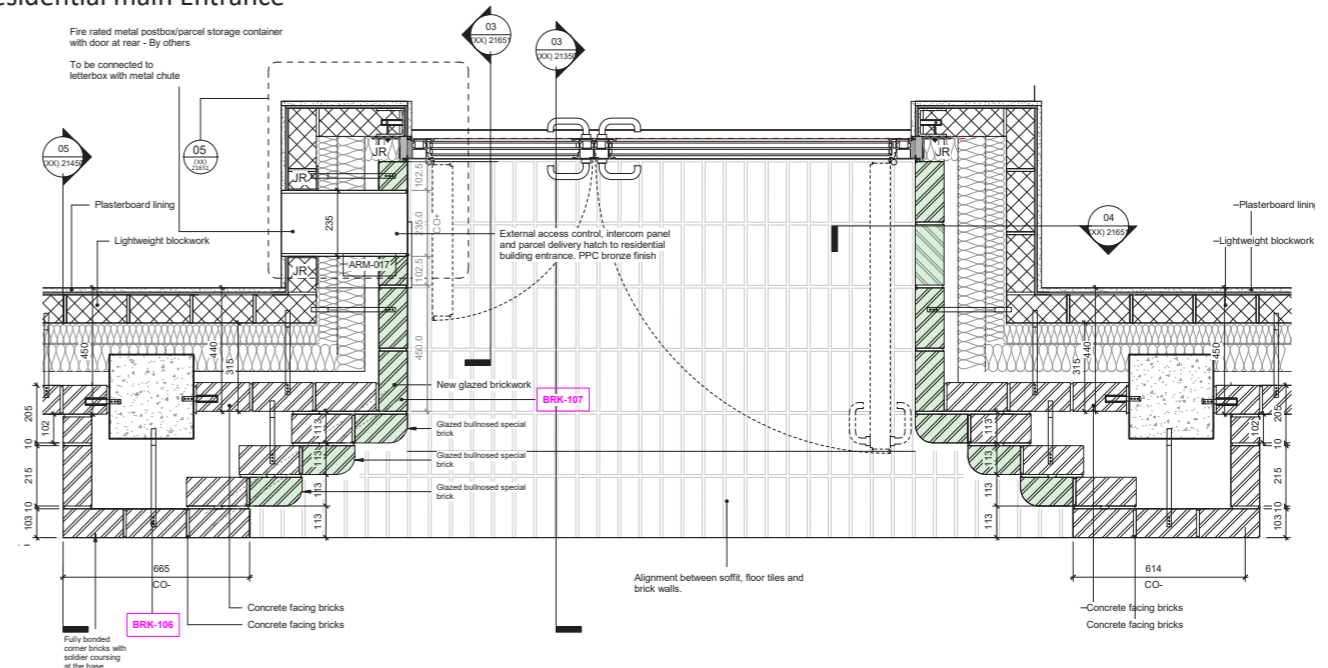
Location key



Bay Elevation, Residential main Entrance



Plan Detail, Residential main Entrance



Residential Main Entrance

Sample Photographs From Site

The adjacent photographs are intended to show the proposed glazed bricks in relation to their adjacent materials. This is for clarity only as the new bricks and windows have been previously approved.

- 01 **Light green glazed brick**
Pyrolave, Nimbus
- 02 **Pale grey concrete brick**
Edenhall, Castleton white. **Consent received 26.11.20**
- 03 **PPC bronze metal frames to windows and doors**
Consent received 26.11.20



Location key

