

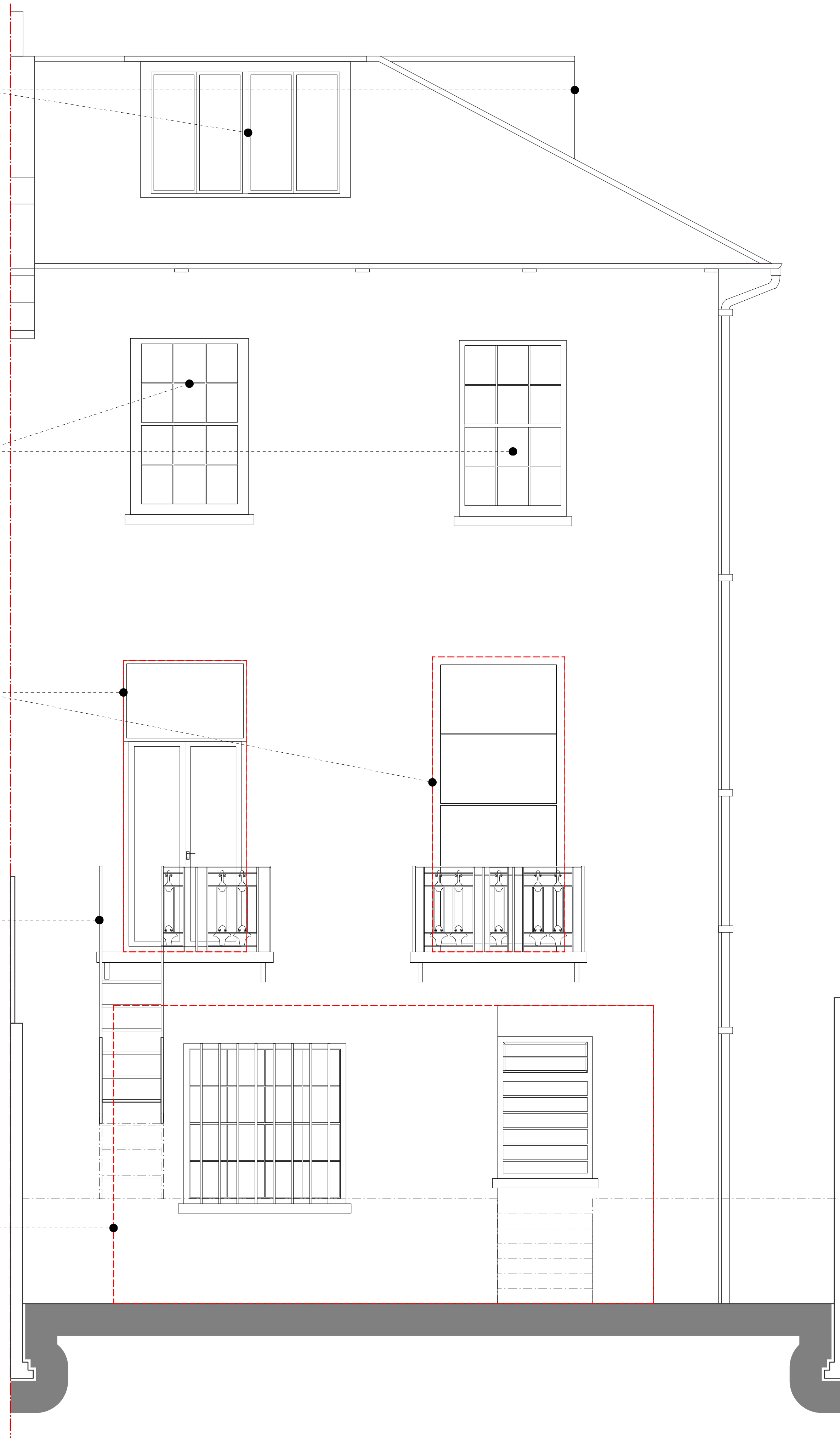
Existing Dormers to be refurbished and thermal efficiency uprated with double glazed glass panels

All existing windows will be surveyed repaired and refurbished as required

Non-original windows on the upper ground floor will be removed and replaced

Existing staircase and railings to balcony on the rear facade to be removed and replaced

External rear wall at lower ground floor level to be removed to make way for new glass extension



General Notes
 - All dimensions to be verified on site
 - To be read in conjunction with all relevant documents
 - In the event of discrepancy notify the Architect immediately
 - All steel structural elements to be finished with intumescent coating, 30 minutes fire resistance. For all structural elements and connection see SE drawings.
 - This document is copyright of Hugh Cullum Architects Ltd

Issue Status
 - SK Sketch - T Tender - P Permissions
 - D Design - E Existing Condition - C Contract

rev note date (drawn by/checked by)

