

**General Notes**

- All dimensions to be verified on site
- To be read in conjunction with all relevant documents
- In the event of discrepancy notify the Architect immediately
- All steel structural elements to be finished with intumescent coating, 30 minutes fire resistance. For all structural elements and connection see SE drawings.
- This document is copyright of Hugh Cullum Architects Ltd

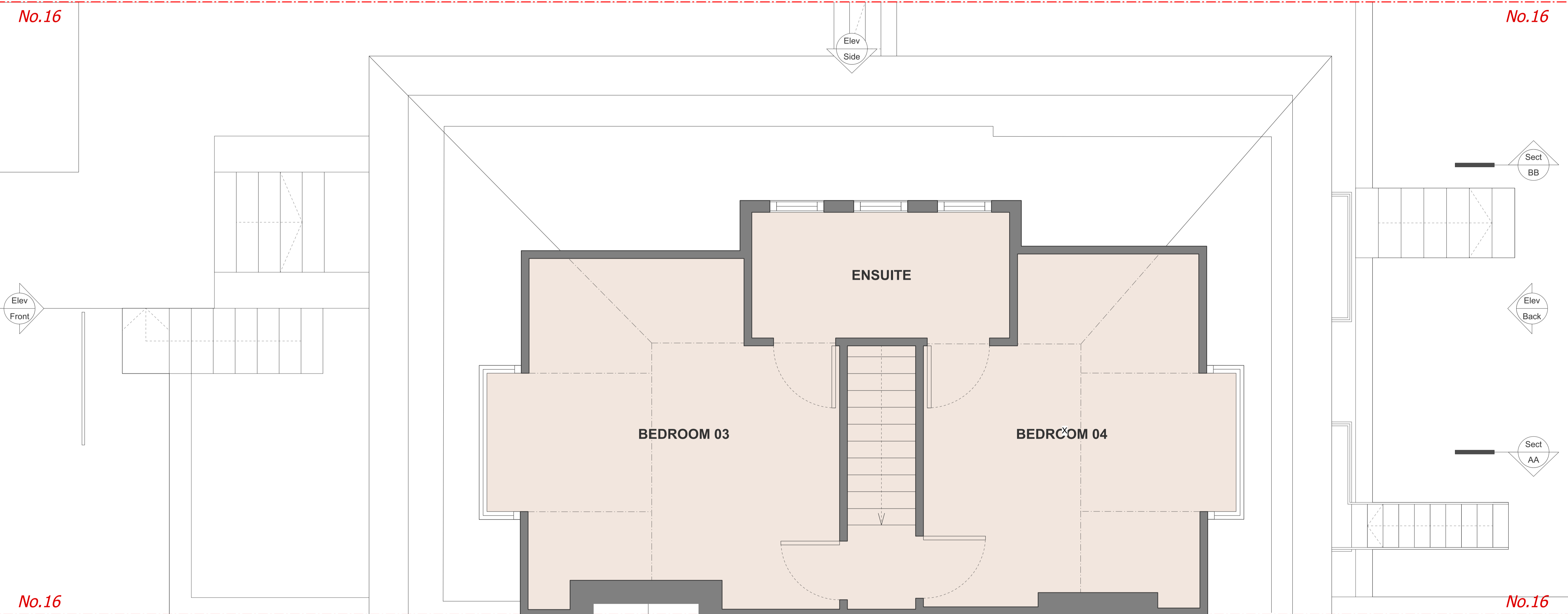
**Issue Status**

- SK Sketch	- T Tender	- P Permissions
- D Design	- E Existing Condition	- C Contract

rev    note    date    (drawn by/checked by)

No.15  
No.16

No.15  
No.16



No.16  
No.17

No.16  
No.17

