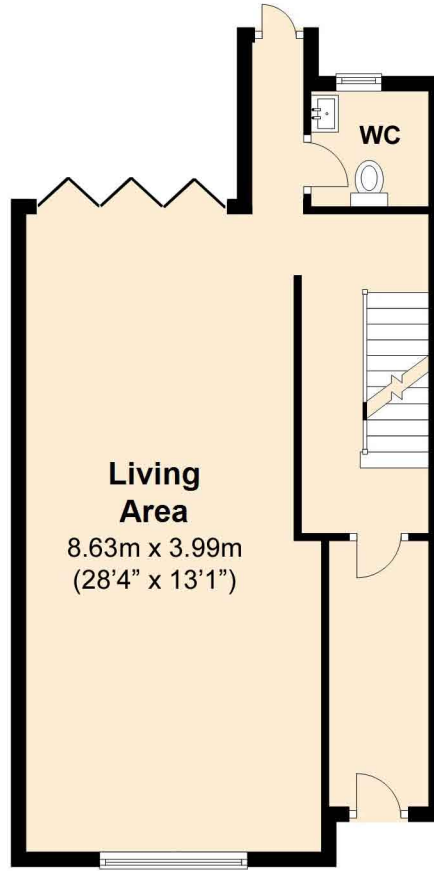


15 Camden Park Road, NW1 9AX

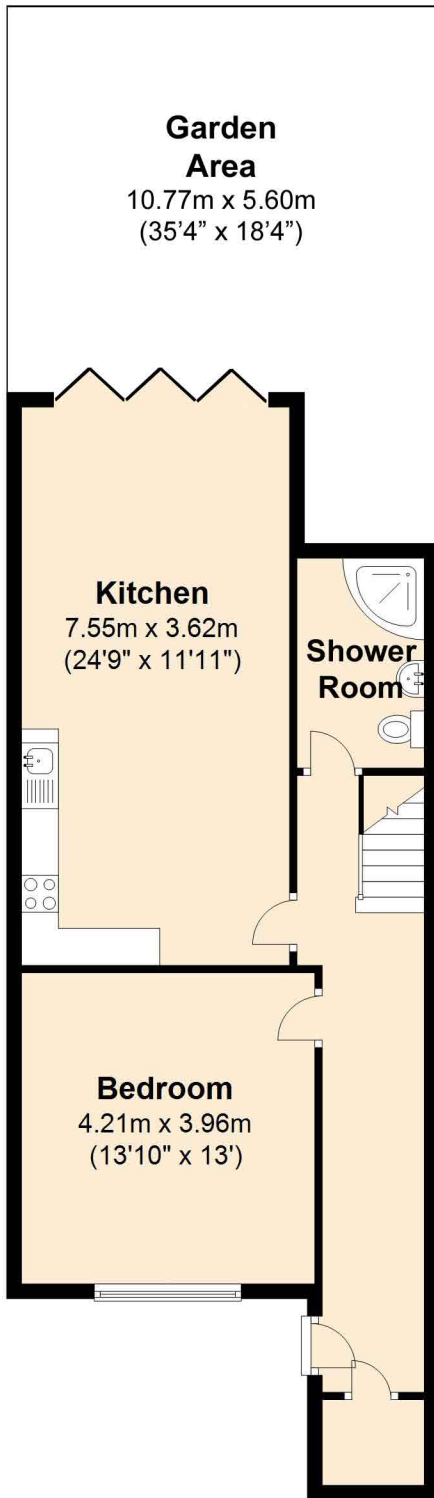
Ground Floor

Approx. 50.5 sq. metres (543.6 sq. feet)



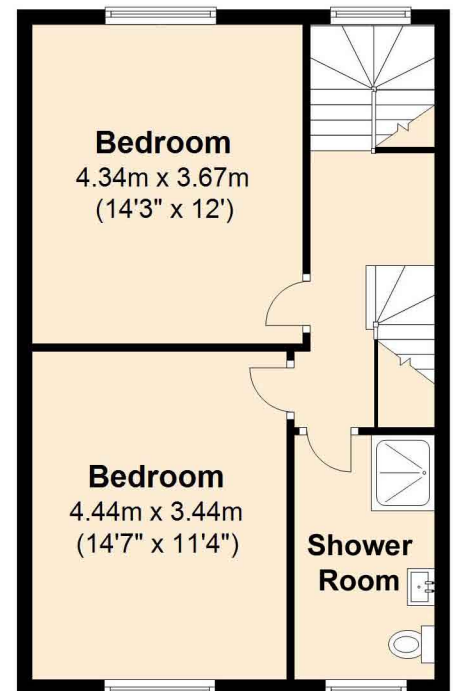
Basement

Approx. 64.6 sq. metres (694.9 sq. feet)



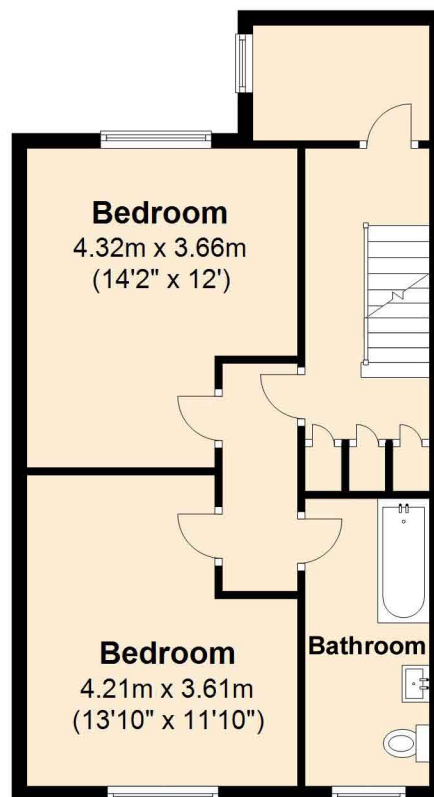
Second Floor

Approx. 48.3 sq. metres (520.3 sq. feet)



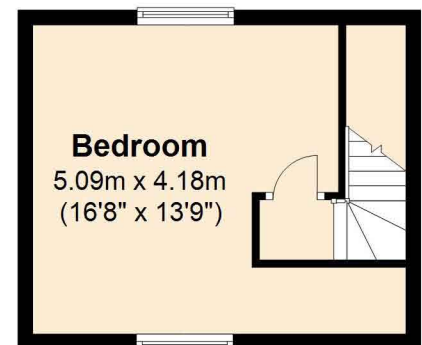
First Floor

Approx. 50.6 sq. metres (545.0 sq. feet)



Third Floor

Approx. 21.1 sq. metres (227.0 sq. feet)



Total area: approx. 235.1 sq. metres (2530.8 sq. feet)

For illustration purposes only - not to scale