



**Planning Condition 33**  
**Doors on Highways**

**Mount Pleasant Place, Phase 2**

**Ryder Architecture Limited**

33 Gresse Street  
London  
W1T 1QU  
United Kingdom

T: +44 20 7299 0550

**info@ryderarchitecture.com**  
**www.ryderarchitecture.com**

Newcastle  
London  
Glasgow  
Liverpool  
Hong Kong  
Vancouver  
Amsterdam

**Ryder Alliance**

Melbourne  
Sydney  
Perth  
Brisbane  
Barcelona  
Durban  
Johannesburg  
Cape Town  
Bangkok  
Shanghai  
Seoul  
Tokyo

**www.ryderalliance.com**

## Introduction

This document has been prepared by Ryder Architecture on behalf of Taylor Wimpey Central London & McAleer and Rush to illustrate the location of doors, gates and means of escape that are located in close proximity to the highway.



# Doors On Highway Introduction

Mount Pleasant Phase 2 (Blocks B, C and D)  
Doors On Highway

This report illustrates the location of all doors, gates and means of escape that are located in close proximity to the highway. It is assumed that the highway in this context refers to footpaths fronting the following adopted roads: Phoenix Place and Gough Street. The doors that open onto The Walk and Square P have not been taken into consideration in this report because this is privately owned land.

The marked up general arrangement plans that follow highlight the doors. The Planning Condition wording is as follows:

### Condition No.33 Doors On Highway

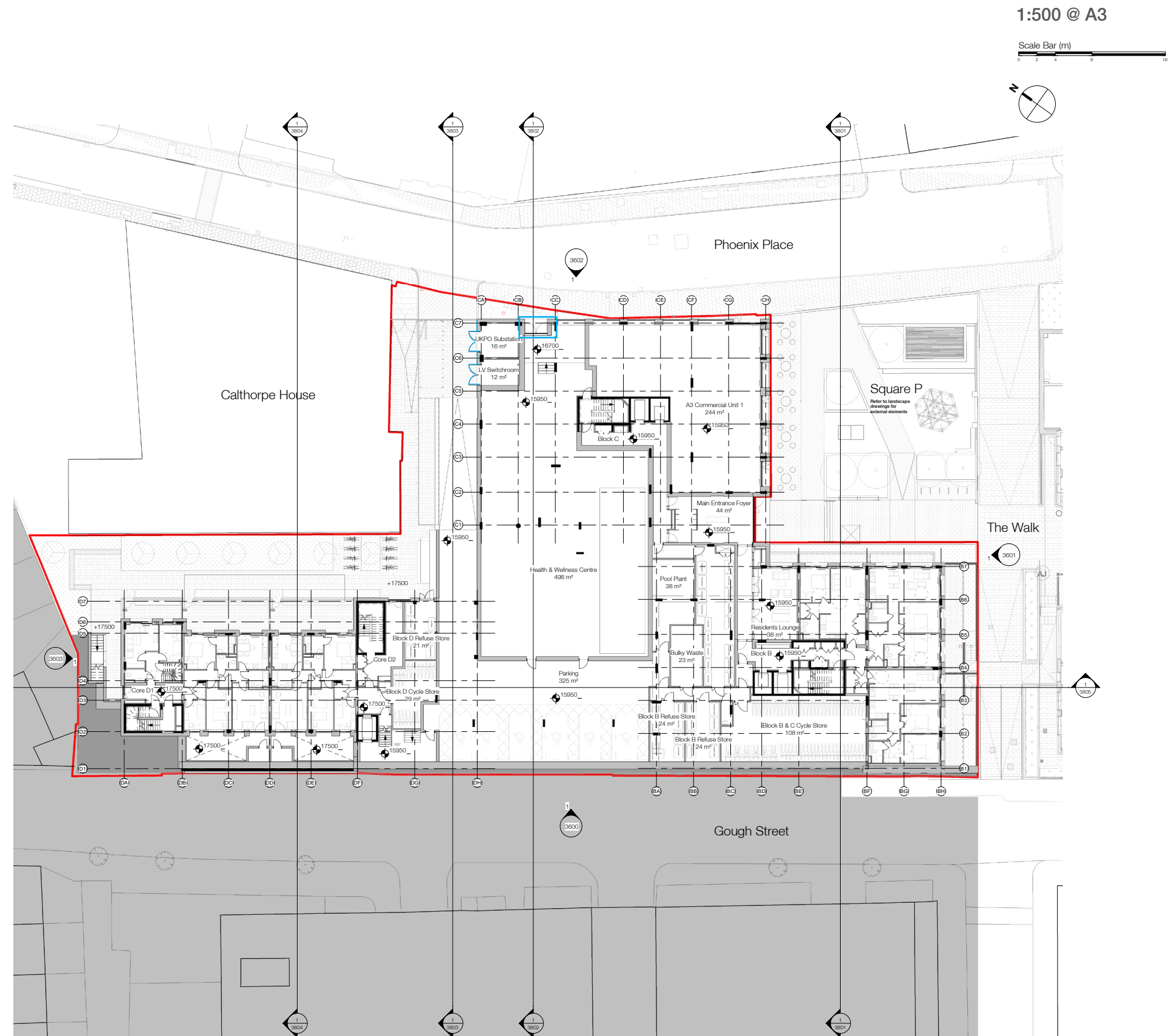
Details of doors or gates and means of escape fronting the highway shall be submitted to and approved by the Local Planning Authority prior to the commencement of any superstructure works. Except where approved herein no other doors or gates shall open over or across footways, carriageways and public rights of way. This report will be used to discharge LB Camden Planning Condition no.33.

## Ground Floor

The entrance to Block C from Phoenix Place is outward opening but is recessed into the building footprint so not to open across the footpath.

The electrical substation and switchroom open onto the private access route to the basement so do not impede the public footpath.

All other entrances at ground level on Blocks B, C and D open onto the privately owned Square P and The Walk.



1:500 @ A3

Scale Bar (m)



### Block D

The main entrance to Block D from Gough Street is outward opening but is recessed into the building footprint so not to open across the footpath.

The other entrances to Block D are set back from the street.

### Access gate to podium gardens

The access gate from Gough Street opens inwards to allow access to the first floor podium garden

