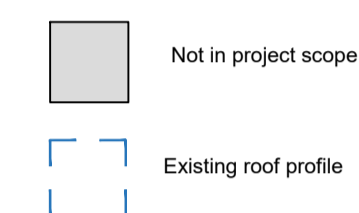


# BARR GAZETAS

Note:

1. Existing portland stone facade cleaned and repaired
2. New double glazed critical style metal slim line windows. Black colour. Includes all replacement windows.
3. Existing historic entrance door, gate and features restored, new bronze signage and new surface mounted light. Existing stone entrance floor cleaned.
4. -
5. -
6. New metal terrace balustrade. Bronze colour finish.
7. New 7th floor mansard storey. Standing seam zinc cladding - bronze colour.
8. New metal framed, double glazed full height windows. Black colour.
9. -
10. New louvered metal plant screen. PPC Grey colour.
11. -
12. New vertical core extension. White render finish.
13. New black metal frame windows to 6th floor 1920s facade.
14. Existing 1920s bronze facade and canopy detail restored.
15. Existing bronze spandrel panels restored throughout facade.



Indicates proposed changes to approved planning application 2019/6088/P and approved LBC 2019/6270/L



CHANGE AFFECTS HISTORIC FABRIC



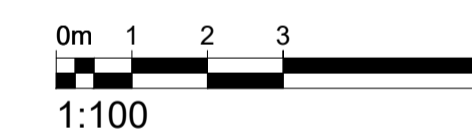
CHANGE AFFECTS MODERN FABRIC ONLY

Revisions also noted in blue

### Description of changes

A. New core extension to be finished in white Render

See also note 3



P6 Issued for Planning AC 28.01.21

P5 Issued for Planning AC 04.02.20

First floor window design amended

P4 Issued for Planning AC 28.11.19

Rev.	Description.	By	Date
------	--------------	----	------

--	--	--	--

Connaught Rooms

Kodak House

71 Kingsway

20.8m

0.8m

0.8m

0.8m

0.8m

0.8m

Client

Kings Keeley Limited C/o Clearbell Capital LLP

Project

65 Kingsway - Base Scheme

Title

Proposed Kingsway Elevation

Status	Purpose of issue	RIBA stage
--------	------------------	------------

S2	For Planning	2
----	--------------	---

Project No.	Drawn	Checked	Scale	Rev.
-------------	-------	---------	-------	------

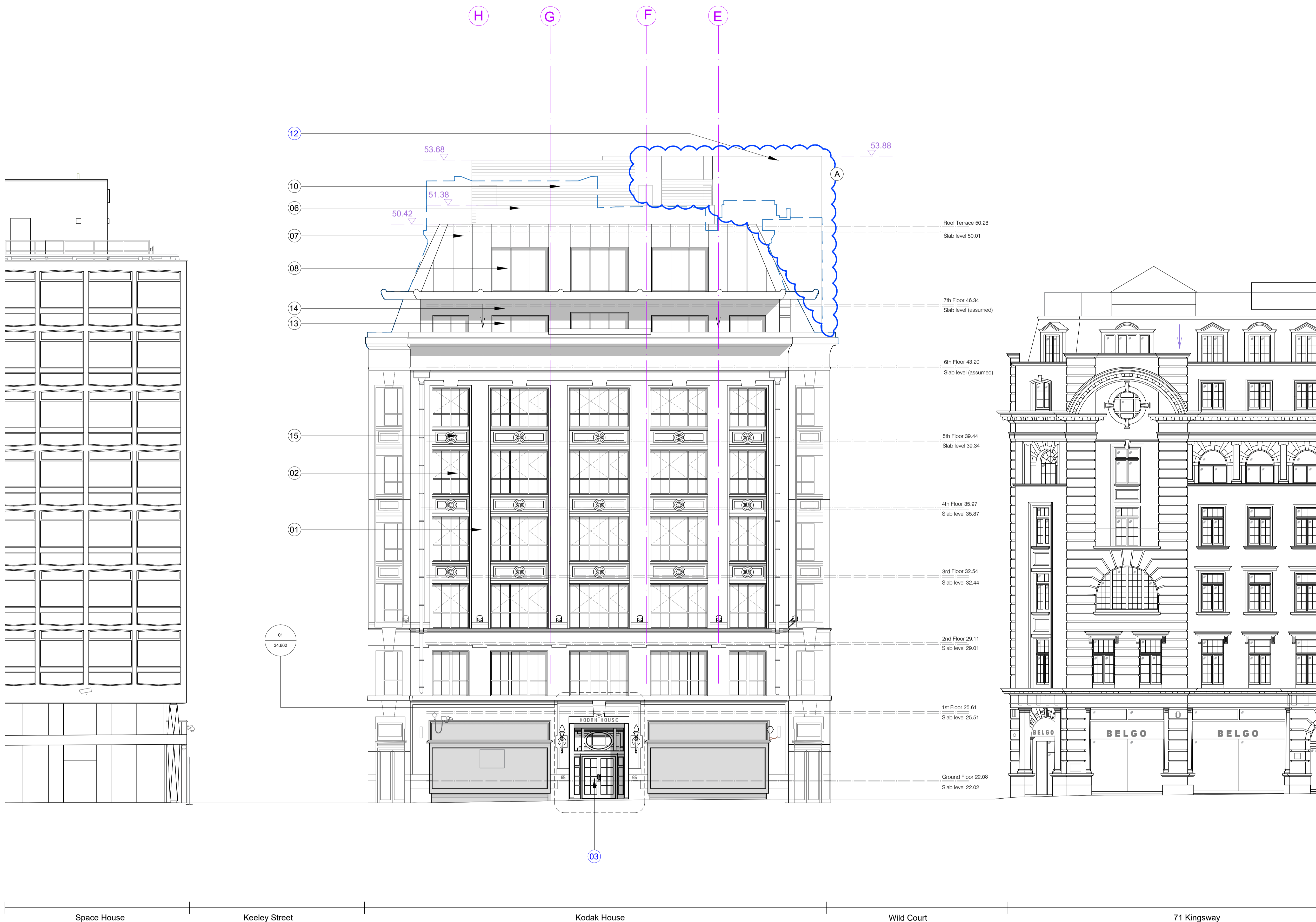
1914	FB	TJ	1:100 @ A1 1:200 @ A3	P6
------	----	----	--------------------------	----

Drawing No.

1914-BG-01-ZZ-DR-A-20.272

Do not scale from this drawing. The Contractor is to take and check all dimensions on site before work commences. Discrepancies must be reported to the Architect. Subcontractors must verify all dimensions on site before making a shop drawing or commencing manufacturing. This drawing is copyright. ©

© Copyright Barr Gazetas Ltd.  
A 116 Heddon Street, London, W1B 4BG  
T 0207 638 5581  
W www.barrgazetas.com



Space House

Keeley Street

Kodak House

Wild Court

71 Kingsway

01  
20.202

Proposed Kingsway Elevation  
1:100@A1, 1:200@A3