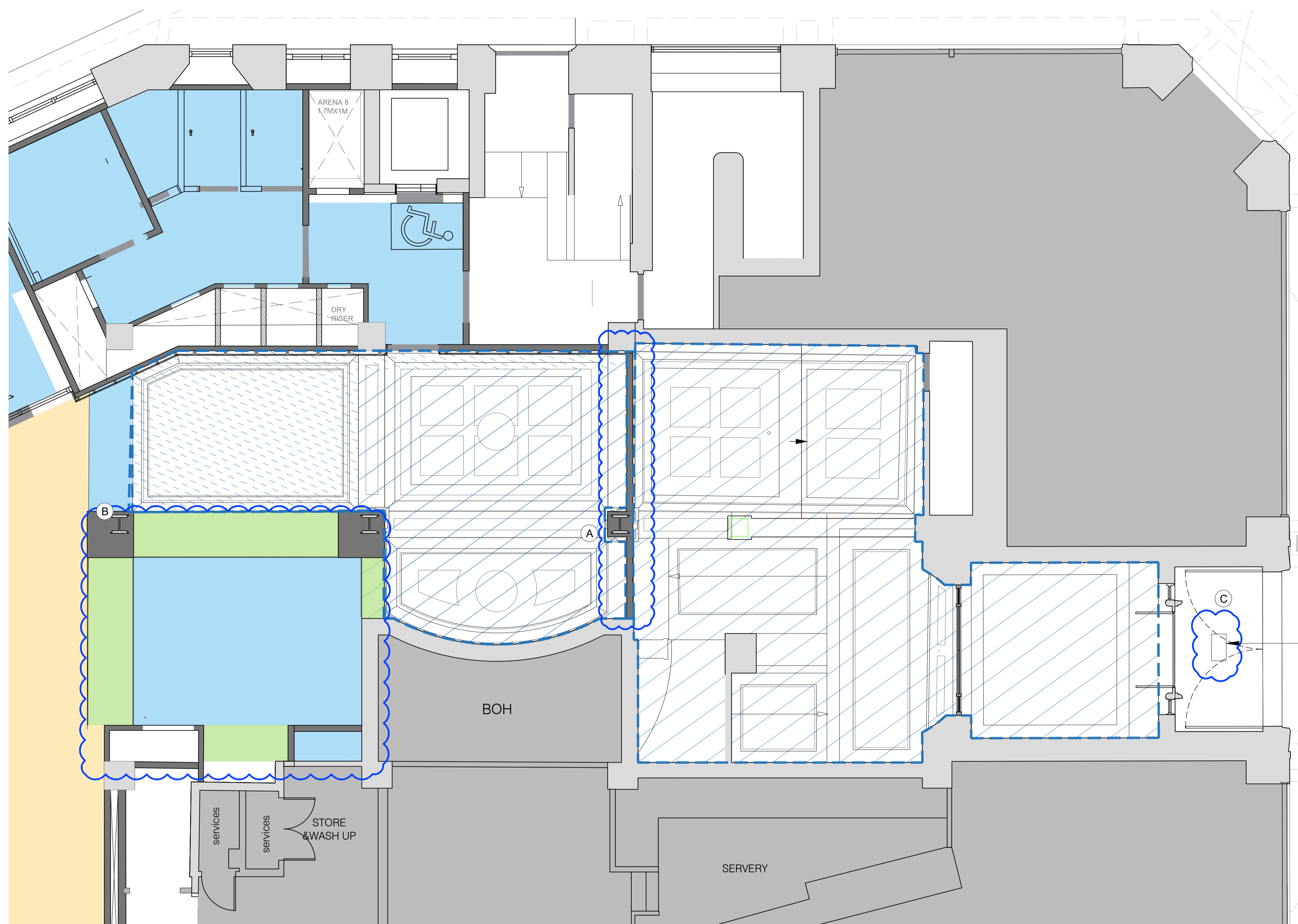


# BARR GAZETAS



- KEY :
- Existing Walls
  - Suspended plasterboard ceiling with recessed or suspended/surface mounted lighting.
  - New structural ceiling with exposed services and suspended lighting.
  - Underside of joinery, concrete finish
  - Not in scope
  - Extent of existing original ceiling retained and restored.
  - Extent of new coffered ceiling details to match adjacent existing historic ceiling like for like.
  - A1 and A3 Demise
- Note:
1. New surface mounted light fitting

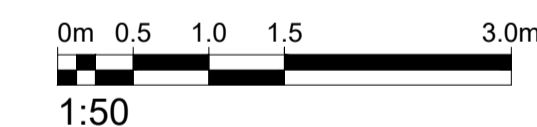
Indicates proposed changes to approved planning application 2019/6088/P and approved LBC 2019/6270/L

- CHANGE AFFECTS HISTORIC FABRIC
- CHANGE AFFECTS MODERN FABRIC ONLY

Revisions also noted in blue

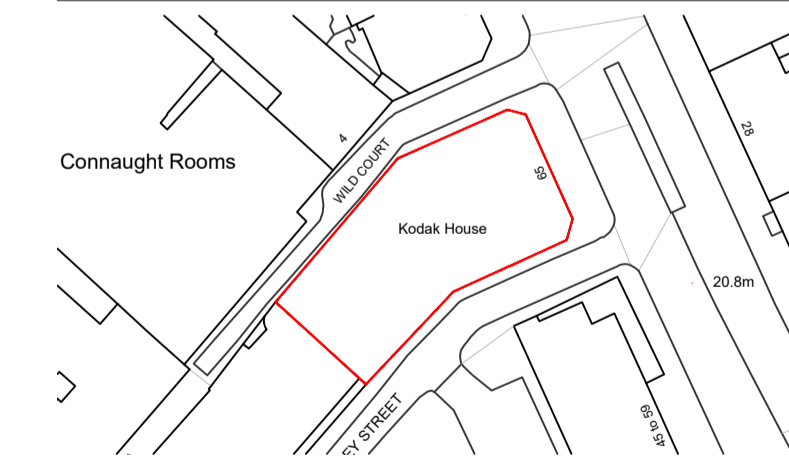
- Description of changes
- A. New partitions wall
  - B. New plasterboard soffits within reception desk area. No impact on demolition of historic fabric.
  - C. New surface mounted light fitting. Existing soffit repaired and repainted.

Drawings to be read alongside Bidwells Heritage Statement for further detail and justifications of the changes affecting Historic fabric.



P5	Issued for Planning	AC	28.01.21
P4	Issued for Planning	AC	28.11.19

Rev.	Description.	By	Date
------	--------------	----	------



Client  
Kings Keeley Limited C/o Clearbell Capital LLP

Project  
65 Kingsway - Base Scheme

Title  
Proposed Historic Ceiling Detail - Ground Floor

Status	Purpose of issue	RIBA stage
S2	For Planning	2

Project No.	Drawn	Checked	Scale	Rev.
1914	FB	TJ	1:50 @ A1 1:100 @ A3	P5

Drawing No.  
**1914-BG-01-ZZ-DR-A-35.270**

Do not scale from this drawing. The Contractor is to take and check all dimensions on site before work commences. Discrepancies must be reported to the Architect. Subcontractors must verify all dimensions on site before making a shop drawing or commencing manufacturing. This drawing is copyright. ©

© Copyright Barr Gazetas Ltd.  
A 10 Heddon Street, London, W1B 4BG  
T 0207 638 5591  
W www.barrgazetas.com

01 Proposed Ground Floor Ceiling Plan Detail  
1:50@A1, 1:100@A3