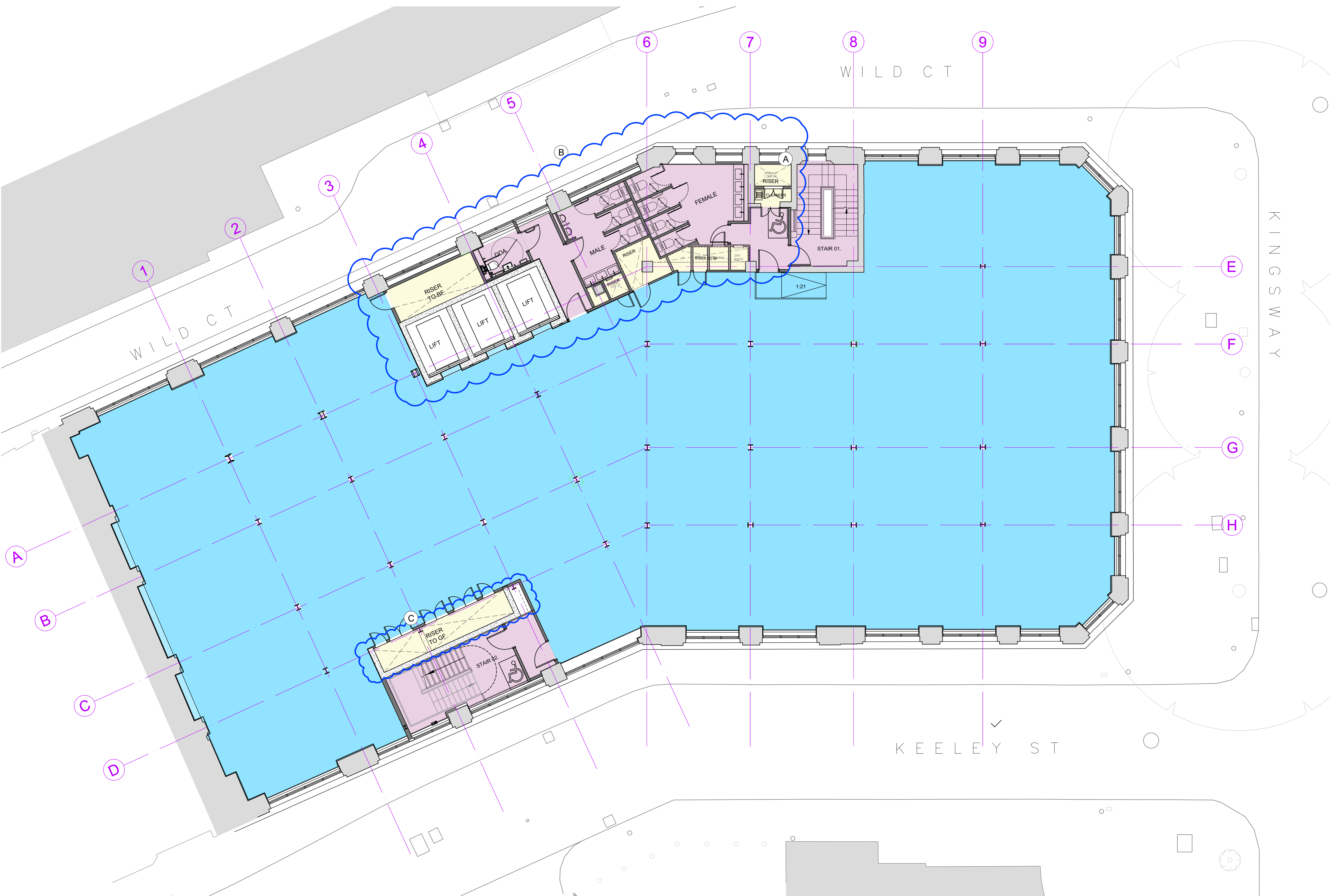


BARR GAZETAS



- KEY :
- Existing Walls
 - Proposed Walls
 - Class B1 - Business
 - Plant / Risers / Services
 - Common parts

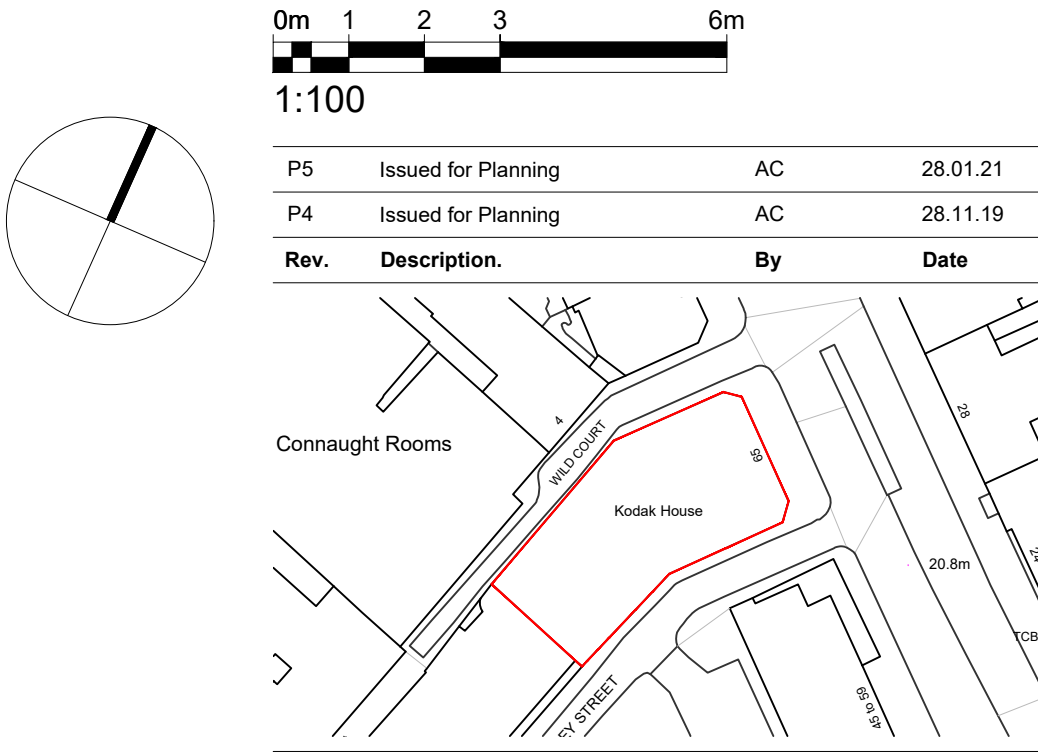
Indicates proposed changes to approved planning application 2019/6088/P and approved LBC 2019/6270/L

- CHANGE AFFECTS HISTORIC FABRIC
- CHANGE AFFECTS MODERN FABRIC ONLY

Description of changes

- A. F/F Lift omitted. Riser and cleaner's in place from second floor to roof.
- B. Revised primary core layout. Lifts shift approx 300mm to GL/5. WC layout amended to suit. Ref drg 20.301
- C. Movement of structural core wall and riser position. Note - No impact on historic fabric, or extent of slab demolition.

Drawings to be read alongside Bidwells Heritage Statement for further detail and justifications of the changes affecting Historic fabric.



Client			
Kings Keeley Limited C/o Clearbell Capital LLP			
Project			
65 Kingsway - Base Scheme			
Title			
Proposed Second Floor Plan			
Status	Purpose of issue	RIBA stage	
S2	For Planning	2	
Project No.	Drawn	Checked	Scale
1914	FB	TJ	1:100 @ A1 1:200 @ A3
Rev.			
P5			
Drawing No.			
1914-BG-01-02-DR-A-20.204			
Do not scale from this drawing. The Contractor is to take and check all dimensions on site before work commences. Discrepancies must be reported to the Architect. Subcontractors must verify all dimensions on site before making a shop drawing or commencing manufacturing. This drawing is copyright. ©			
© Copyright Barr Gazetas Ltd. A 10 Heddon Street, London, W1B 4BG T 0207 638 5581 W www.barrgazetas.com			