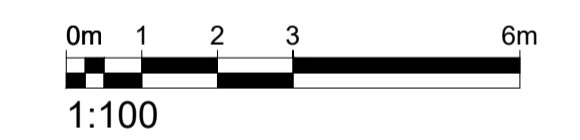


- Plant space
- Terrace
- Green roof
- MEPH services
- Acoustic plant screen

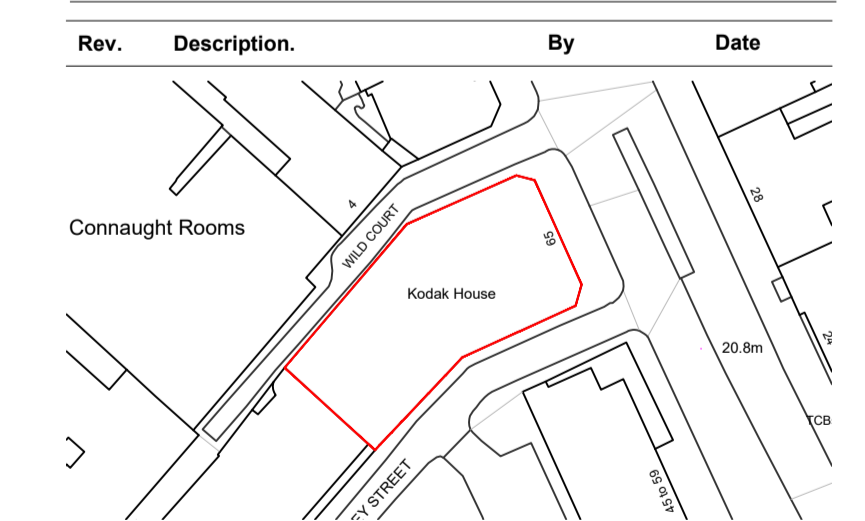
Note:

1. Metal guarding around access hatch entry. To be same colour as plant screen
2. High level walkway for maintenance access to abseil system, shown dotted in blue. Height of walkway to match height of plant screen
3. New supporting columns for high level walkway.

- Fall arrest system - Wire system with posts
- single point anchorage on 'interior' at every entry point
- Roof Davit top mount socket



P9	Issued for Planning	AC	28.01.21
P8	Issued for Planning - Plant screen amended	AC	08.04.20
P7	Issued for Planning - Roof plant equipment shown	AC	24.03.20
P6	Issued for Planning - Plant screen set back	AC	18.03.20
P5	Issued for Planning - Plant screen amended	AC	06.03.20
P4	Issued for Planning	AC	28.11.19



Client  
Kings Keeley Limited C/o Clearbell Capital LLP

Project  
65 Kingsway - Base Scheme

Rev.	Description	By	Date

Client  
Kings Keeley Limited C/o Clearbell Capital LLP

Project  
65 Kingsway - Base Scheme

Title  
Proposed Roof Plan

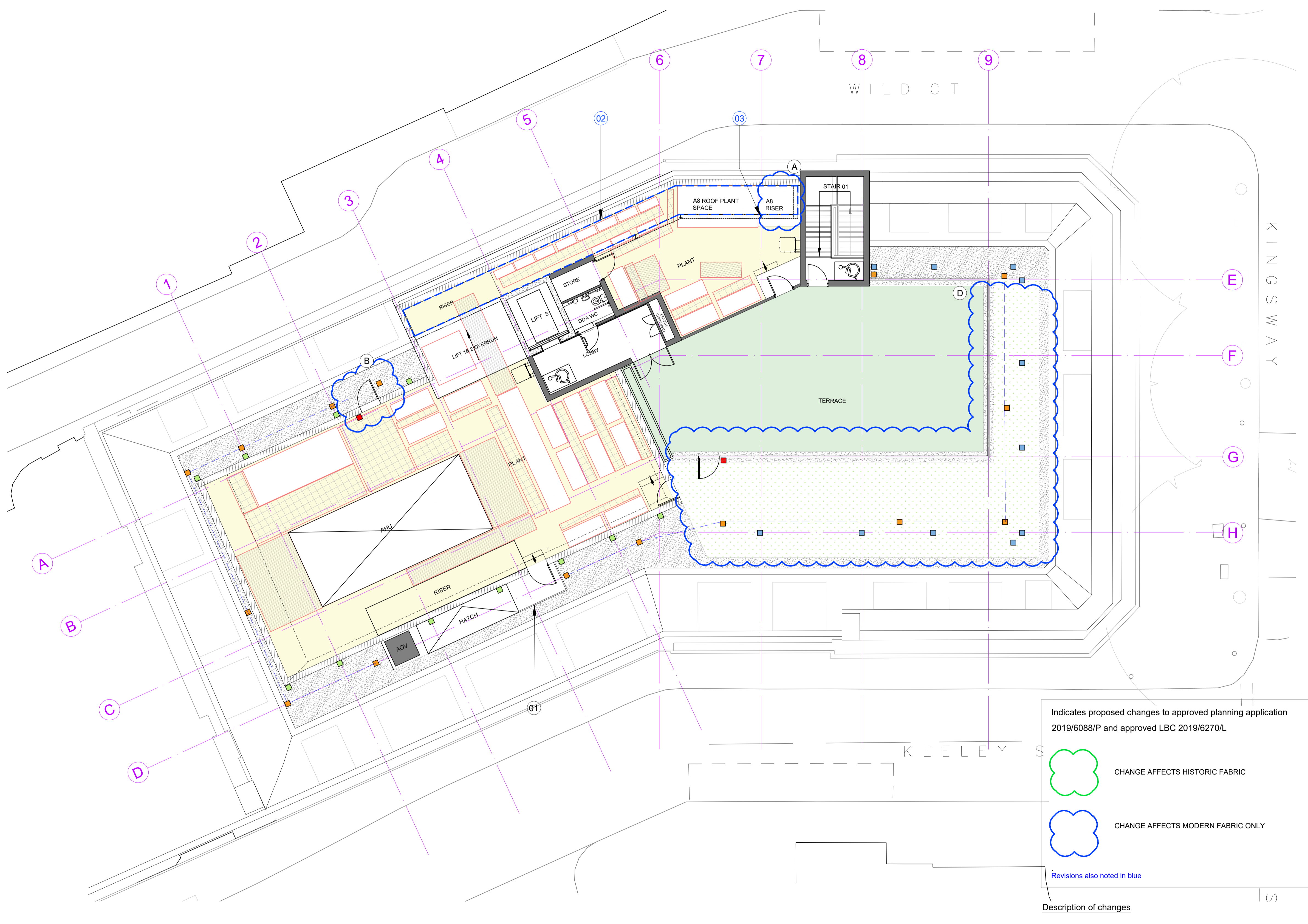
Status	Purpose of issue	RIBA stage
S2	For Planning	2

Project No.	Drawn	Checked	Scale	Rev.
1914	FB	TJ	1:100 @ A1 1:200 @ A3	P9

Drawing No.  
1914-BG-01-08-DR-A-20.210

Do not scale from this drawing. The Contractor is to take and check all dimensions on site before work commences. Discrepancies must be reported to the Architect. Subcontractors must verify all dimensions on site before making a shop drawing or commencing manufacturing. This drawing is copyright. ©

© Copyright Barr Gazetas Ltd  
A 19 Heddon Street, London, W1B 4BG  
T 0207 638 5581  
W www.barrgazetas.com



Indicates proposed changes to approved planning application 2019/6088/P and approved LBC 2019/6270/L

- CHANGE AFFECTS HISTORIC FABRIC
- CHANGE AFFECTS MODERN FABRIC ONLY

Revisions also noted in blue

Description of changes

- A. F/F Lift omitted. Riser from second floor to roof in place.
- B. Additional door to plant enclosure for maintenance access
- C. Fall arrest and abseil anchors included
- D. Terrace extent is reduced. Set back increases along Kingsway and Keeley Street

See also note s and 3

Drawings to be read alongside Bidwells Heritage Statement for further detail and justifications of the changes affecting Historic fabric.

01 Proposed Roof Plan  
20.211 1:100@A1, 1:200@A3