





# BARR GAZETAS

Note:

1. 6th floor cladding to be removed. Structure to be retained.
2. Existing metal plant screen removed.
3. Existing roof plant removed.
4. Existing modern windows removed throughout whole facade.
5. Existing modern door removed
6. -
7. -
8. Existing 1920's extension and canopy retained, windows removed.
9. Existing modern lift core demolished.
10. 7th floor mansard to be demolished.
11. Existing roof structure to be demolished.
12. Existing modern louvered panels to be removed.

KEY:

-  Demolition and strip out
-  Facade cladding removed only. Structure retained
-  Demolition and strip out
-  Not in project scope

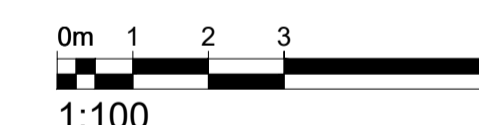
Indicates proposed changes to approved planning application 2019/6088/P and approved LBC 2019/6270/L

-  CHANGE AFFECTS HISTORIC FABRIC
-  CHANGE AFFECTS MODERN FABRIC ONLY

Description of changes

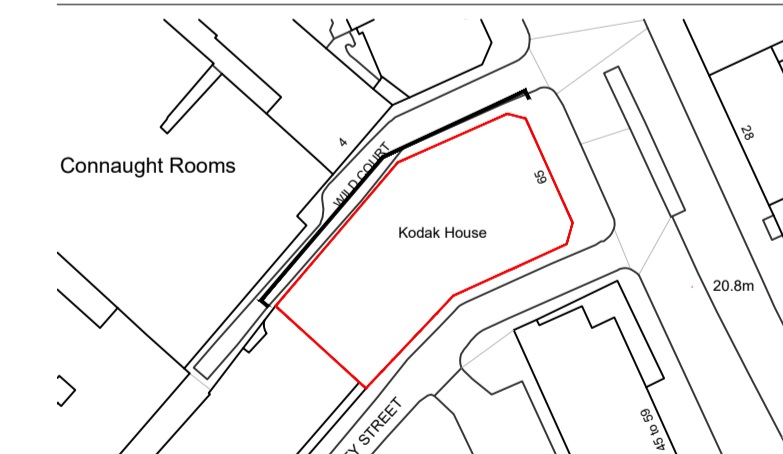
- A. Existing, metal infill panel removed
- B. Existing louver panel removed

Drawings to be read alongside Bidwells Heritage Statement for further detail and justifications of the changes affecting Historic fabric.



P5	For Planning	AC	28.01.21
P4	For Planning	AC	28.11.19

Rev.	Description	By	Date
------	-------------	----	------



Client  
Kings Keeley Limited C/o Clearbell Capital LLP  
Project  
65 Kingsway - Base Scheme

Title  
Demolition Wild Court Elevation

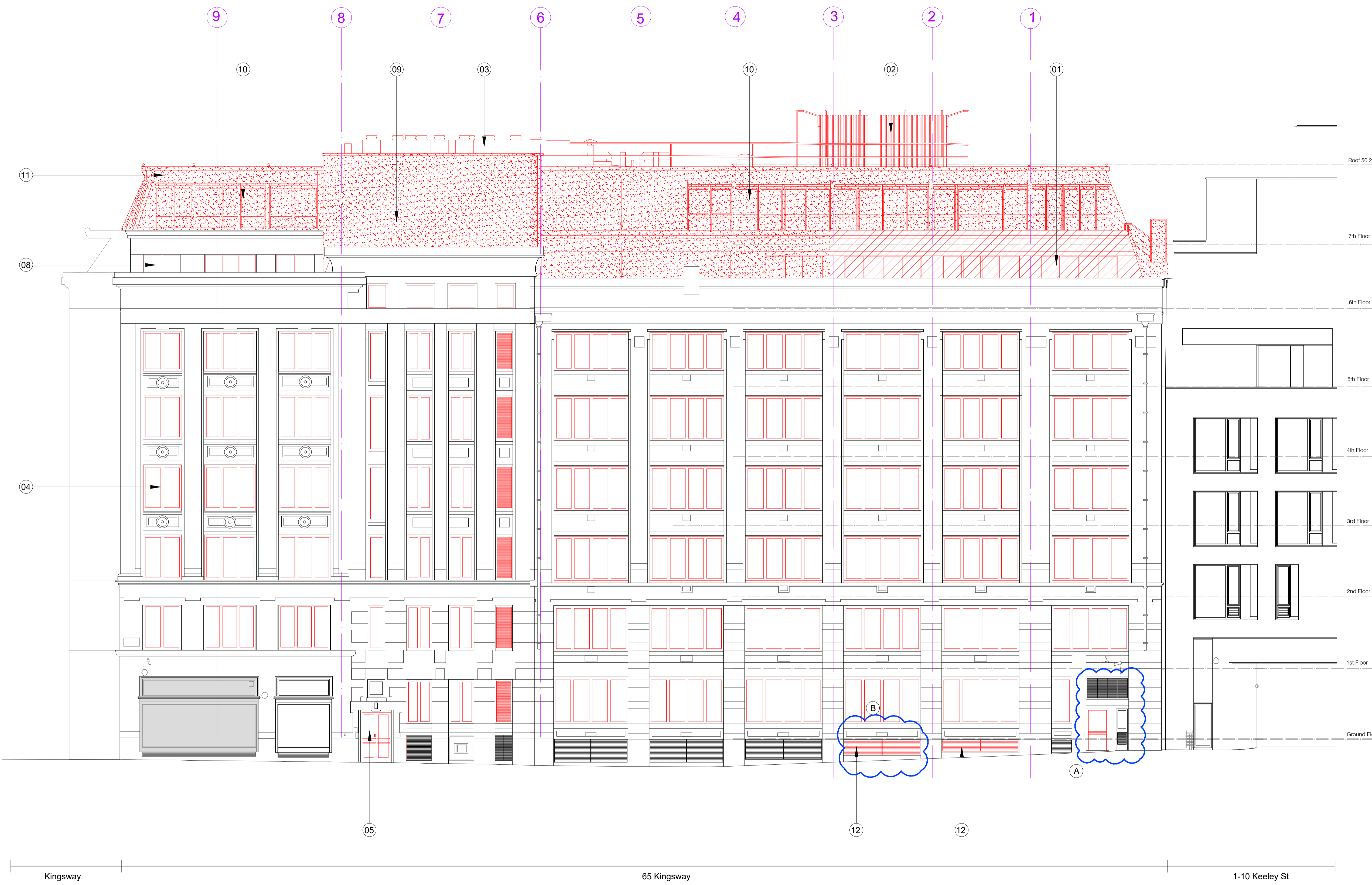
Status	Purpose of issue	RIBA stage
S2	For Planning	2

Project No.	Drawn	Checked	Scale	Rev.
1914	FB	TJ	1:100 @ A1 1:200 @ A3	P5

Drawing No.  
1914-BG-01-ZZ-DR-A-15.273

Do not scale from this drawing. The Contractor is to take and check all dimensions on site before work commences. Discrepancies must be reported to the Architect. Subcontractors must verify all dimensions on site before making a shop drawing or commencing manufacturing. This drawing is copyright. ©

© Copyright Barr Gazetas Ltd.  
A 116 Heddon Street, London, W1B 4BG  
T 0207 638 5581  
W www.barrgazetas.com



01 Demolition Wild Court Elevation  
15.202 1:100@A1, 1:200@A3