
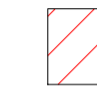




BARR GAZETAS

Note:

1. 6th floor cladding to be removed. Structure to be retained.
2. Existing metal plant screen removed.
3. Existing roof plant removed.
4. Existing modern windows removed throughout whole facade
5. -
6. -
7. -
8. Existing 1920's extension and canopy retained, windows removed.
9. Existing lift core demolished.
10. 7th floor mansard to be demolished.
11. Existing roof structure to be demolished.
12. Existing modern louvered panels to be removed.
13. Remove modern window, masonry and louvered panels.
14. Stone cladding to be removed

KEY :

-  Demolition and strip out
-  Facade cladding remove only. Structure retained
-  Demolition and strip out
-  Not in project scope

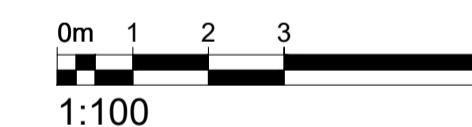
Barr Gazetas Mark-up for comment. Includes propose changes to approved planning application 2019/6088/P and approved LBC 2019/6270/L

-  CHANGE AFFECTS HISTORIC FABRIC
-  CHANGE AFFECTS MODERN FABRIC ONLY

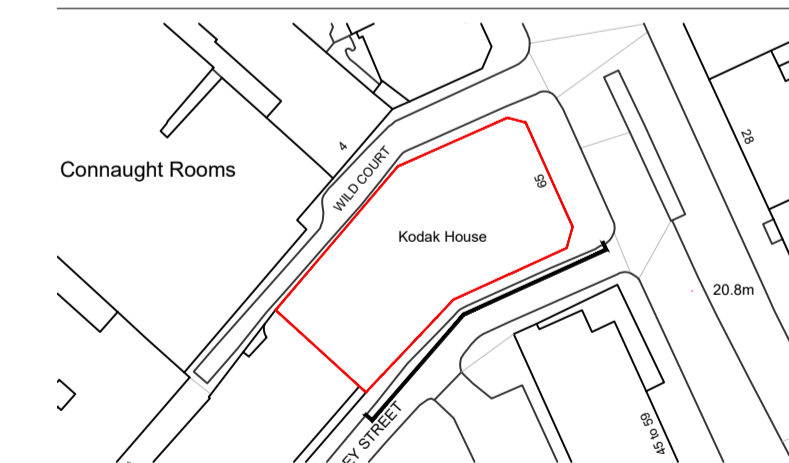
Description of changes

- A. External louvered panels to be removed.

Drawings to be read alongside Bidwells Heritage Statement for further detail and justifications of the changes affecting Historic fabric.



P5	For Planning	AC	28.01.21
P4	For Planning	AC	28.11.19
Rev.	Description.	By	Date



Client
Kings Keeley Limited C/o Clearbell Capital LLP
Project
65 Kingsway - Base Scheme

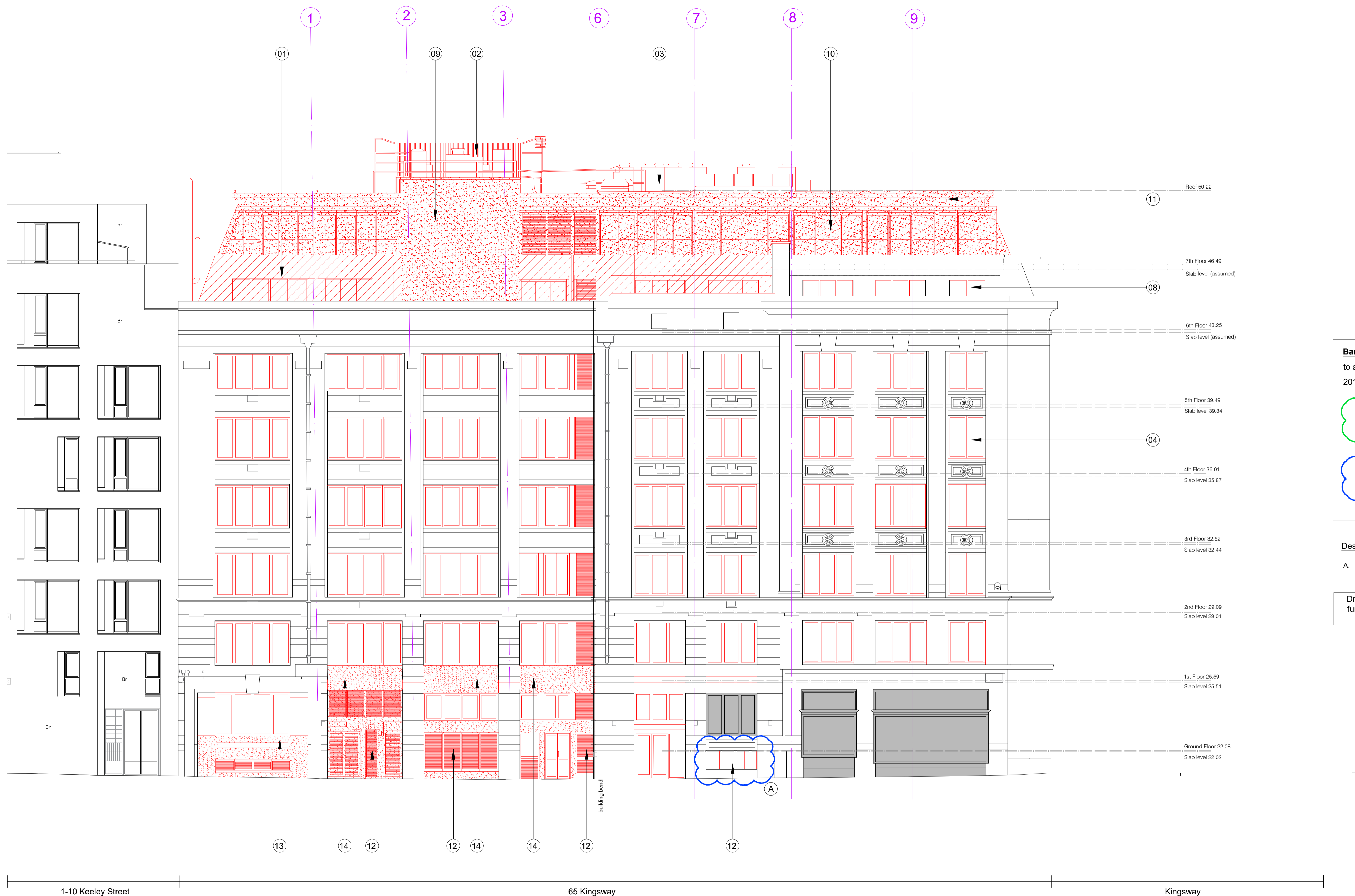
Title
Demolition Keeley Street Elevation

Status	Purpose of issue	RIBA stage		
S2	For Planning	2		
Project No.	Drawn	Checked	Scale	Rev.
1914	FB	TJ	1:100 @ A1 1:200 @ A3	P5

Drawing No.
1914-BG-01-ZZ-DR-A-15.271

Do not scale from this drawing. The Contractor is to take and check all dimensions on site before work commences. Discrepancies must be reported to the Architect. Subcontractors must verify all dimensions on site before making a shop drawing or commencing manufacturing. This drawing is copyright. ©

© Copyright Barr Gazetas Ltd.
A 116 Heddon Street, London, W1B 4BG
T 0207 638 5241
W www.barrgazetas.com



1-10 Keeley Street

65 Kingsway

Kingsway

01
15.202
Demolition Keeley Street Elevation
1:100@A1, 1:200@A3