


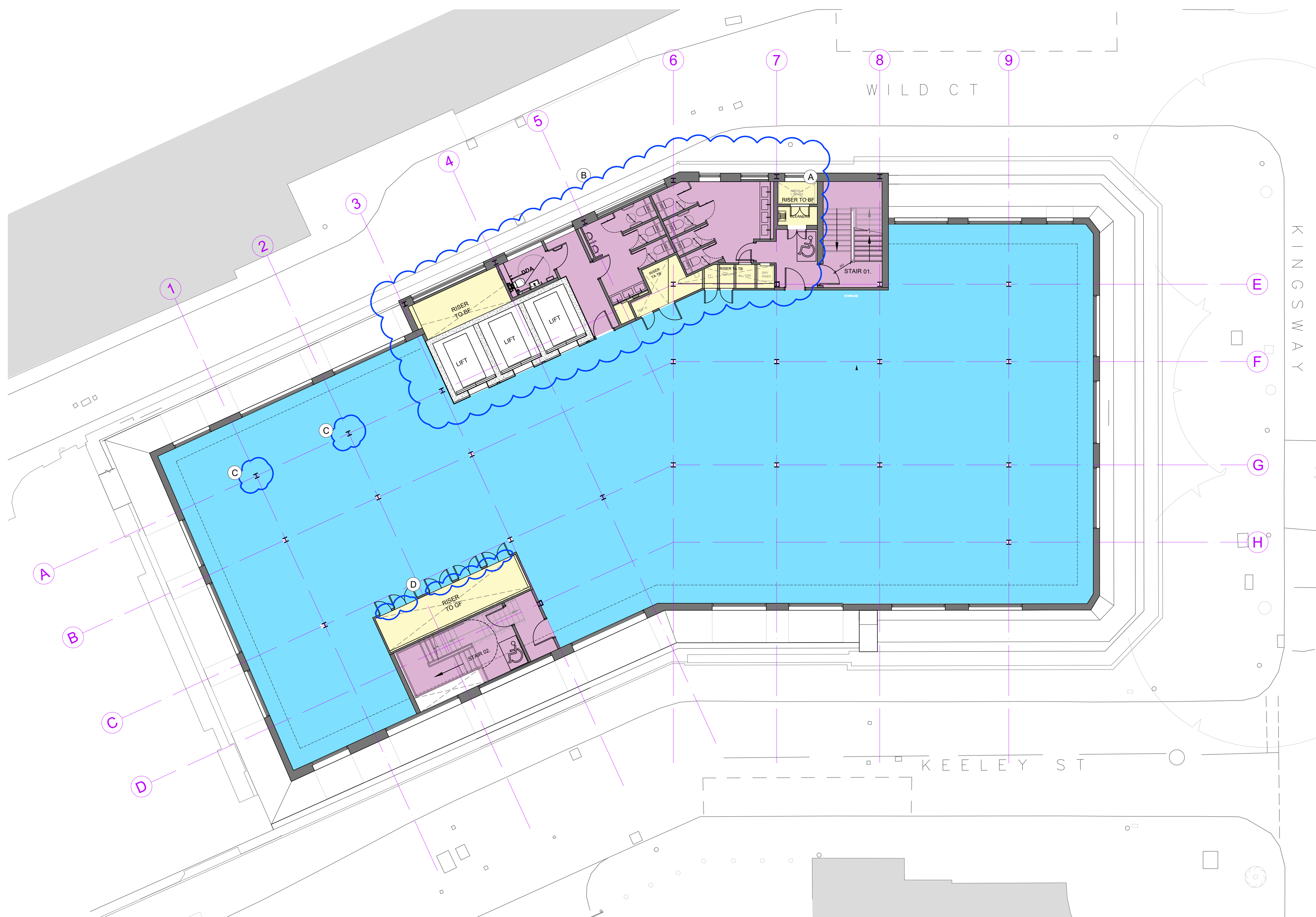


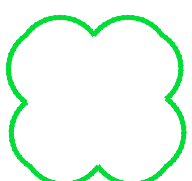

BARR GAZETAS

KEY :

-  Existing Walls
-  Proposed Walls
-  Class B1 - Business
-  Plant / Risers / Services
-  Common parts



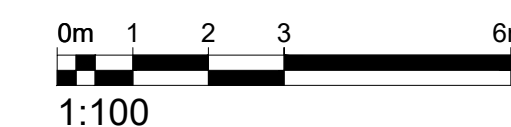
Indicates proposes changes to approved planning application 2019/6088/P and approved LBC 2019/6270/L

-  CHANGE AFFECTS HISTORIC FABRIC
-  CHANGE AFFECTS MODERN FABRIC ONLY

Description of changes

- A. F/F Lift omitted. Riser and cleaner's in place from second floor to roof.
- B. Revised primary core layout. Lifts shift approx 300mm to GL/5. WC layout amended to suit. Ref drg 20.301
- C. Additional new columns to suit SE requirements
- D. Riser wall shifts out slightly to suit structural and services requirements

Drawings to be read alongside Bidwells Heritage Statement for further detail and justifications of the changes affecting Historic fabric.



Rev.	Description.	By	Date
P5	For Planning	AC	28.01.21
P4	For Planning	AC	28.11.19

Client
Kings Keeley Limited C/o Clearbell Capital LLP
Project
65 Kingsway - Base Scheme

Title
Proposed Seventh Floor Plan

Status	Purpose of issue	RIBA stage
S4	For Planning	2

Project No.	Drawn	Checked	Scale	Rev.
1914	FB	TJ	1:100 @ A1 1:200 @ A3	P5

Drawing No.
1914-BG-ZZ-07-DR-A-20.209

Do not scale from this drawing. The Contractor is to take and check all dimensions on site before work commences. Discrepancies must be reported to the Architect. Subcontractors must verify all dimensions on site before making a shop drawing or commencing manufacturing. This drawing is copyright. ©

© Copyright Barr Gazetas Ltd.
A 10 Heddon Street, London, W1B 4BG
T 0207 638 5581
W www.barrgazetas.com

01	Proposed Seventh Floor Plan
20.209	1:100@A1, 1:200@A3