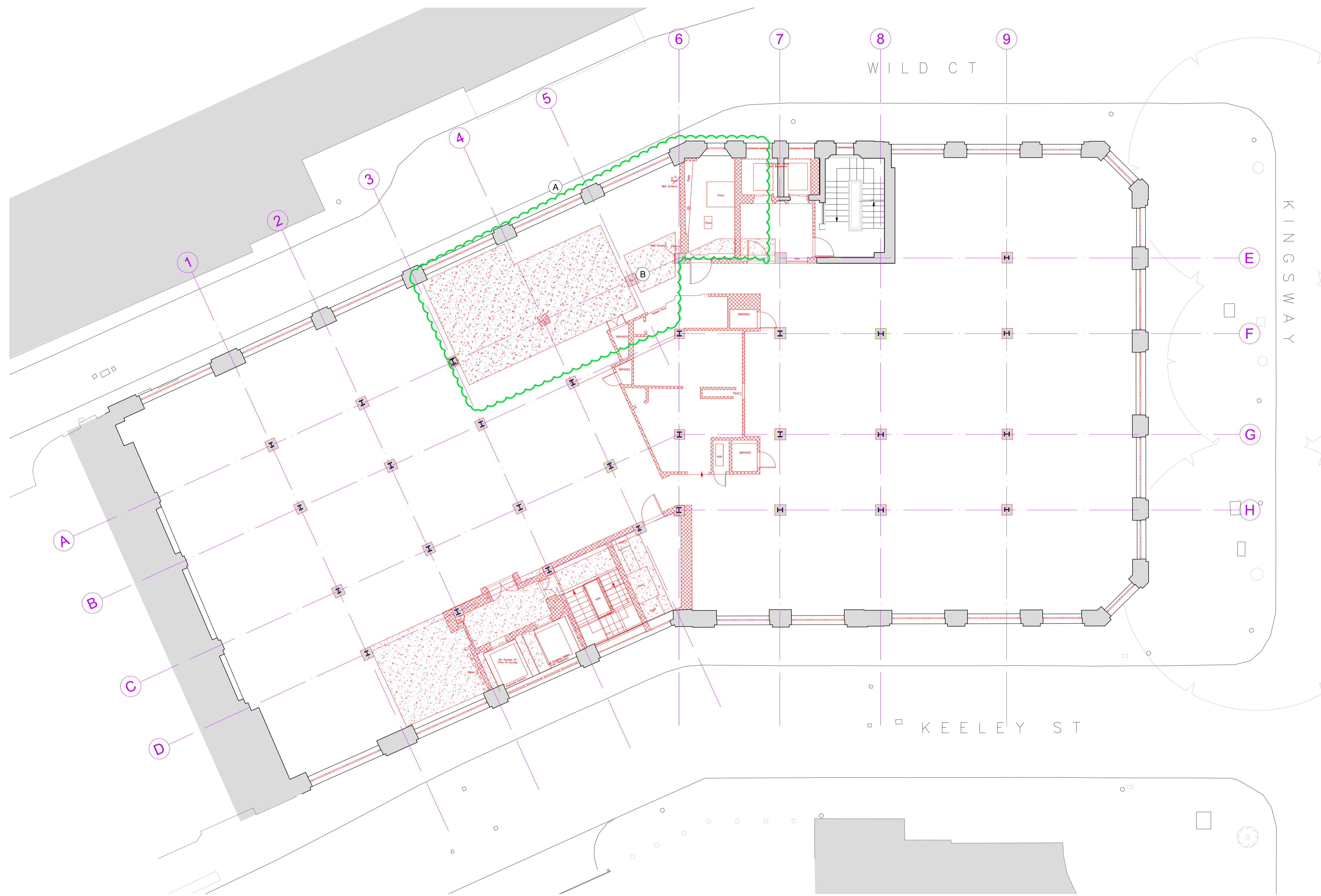


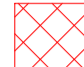


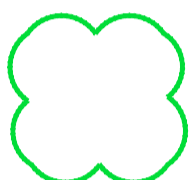



BARR GAZETAS



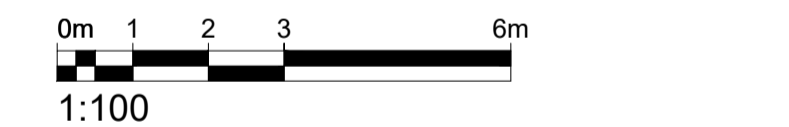
- KEY :**
-  Existing walls
 -  Demolition and strip out
 -  Demolition and strip out
 -  Strip out of finishes and concrete column encasement to reveal existing steel column
 -  Structural floor slab demolition. Refer to SE information
- GENERAL NOTE:**
All modern (non-original) finishes, fixtures, fittings and linings to be removed from walls, floors and ceilings throughout.

Indicates proposed changes to approved planning application 2019/6088/P and approved LBC 2019/6270/L

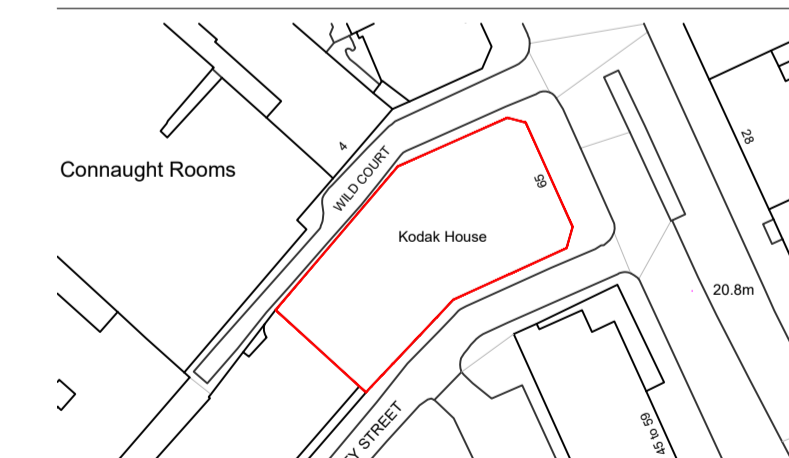
-  CHANGE AFFECTS HISTORIC FABRIC
-  CHANGE AFFECTS MODERN FABRIC ONLY

- Description of changes**
- A. Reduced extent of slab demolition following structural investigations.
 - B. Column on GL 5/A retained

Drawings to be read alongside Bidwells Heritage Statement for further detail and justifications of the changes affecting Historic fabric.



P5	For Planning	AC	28.01.21
P4	For Planning	AC	28.11.19
Rev.	Description.	By	Date



Client
Kings Keeley Limited C/o Clearbell Capital LLP

Project
65 Kingsway - Base Scheme

Title			
Demolition Third Floor Plan			
Status	Purpose of issue	RIBA stage	
S2	For Planning	2	
Project No.	Drawn	Checked	Scale
1914	FB	TJ	1:100 @ A1 1:200 @ A3
Rev.			Rev.
			P5

Drawing No.
1914-BG-01-03-DR-A-15.205

Do not scale from this drawing. The Contractor is to take and check all dimensions on site before work commences. Discrepancies must be reported to the Architect. Subcontractors must verify all dimensions on site before making a shop drawing or commencing manufacturing. This drawing is copyright ©

© Copyright Barr Gazetas Ltd.
A 10 Heddon Street, London, W1B 4BG
T 0207 638 5591
W www.barrgazetas.com

01 Demolition Third Floor Plan
15.205 1:100@A1, 1:200@A3