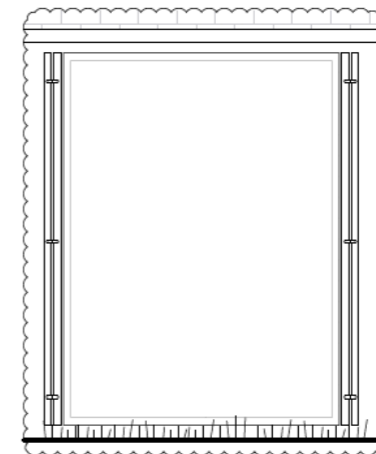


REAR DORMER REFERENCE
The Admirals House NW3 Rear dormer reference.



DETAIL B:
STABLE DOOR GLAZING WITH SHUTTERS OPEN
Fully glazed pivoting panel behind timber shutters. When open these apertures appear as open voids to give most authentic reconstruction of original condition as a stable.



Approved groundwork walls

CHAN + EAYRS
111 Frognal, Hampstead NW3 6XR

Zoe Chan Eayrs and Merlin Eayrs

Project : 111 Frognal

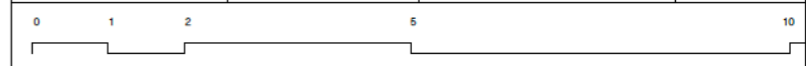
TITLE : APPROVED SECTION DD W/GROUNDWORKS
: AMENDED SECTION DD

Date 21/01/21

Scale 1:50 @A1

Drawing No. S1.DD

Rev.09



If the drawing on this page does not align with those in the Design, Access and Heritage Statement due to it being superceded, this drawing takes precedence.