

STATUS REV	DATE	DESCRIPTION	DSG DRW CHK APP
S3	P03 23/11/2020	Amendments to planting	AD TS
S3	P02 25/09/2020	Updated Planting Schedule	AC TS
S3	P01 22/05/2020	Stage 4 Issue	AC TS

ALL REVISIONS

STATUS REV | DATE | DESCRIPTION | DSG | DRW | CHK | APP

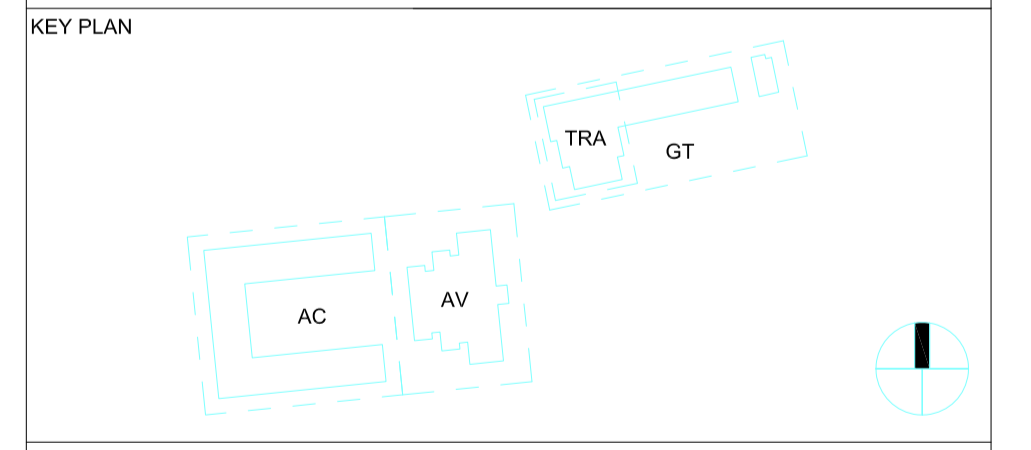
ALL REVISIONS

MAIN CONTRACTOR



Bouygues UK
Becket House
1 Lambeth Palace Rd
Lambeth, London SE1 7EU
Tel: 020 7401 0020

CLIENT LOGO

ORIGINATOR

turkington martin

MPR01

Studio 3.04 Chester House, Kennington Park
1-3 Brixton Road, London, SW9 6DE
T: (+44) 020 3567 1050
E: studio@turkingtonmartin.com

PROJECT NAME
Maitland Park Redevelopment

DRAWING TITLE
Planting Schedule

SCALE @ A1 N/A	MODEL FILE NAME - REVISION N/A						
FIRST ISSUE DATE 22/05/2020	PROJECT STAGE Stage 4						
STATUS CODE S3 - Suitable for Review and Comment							
PROJECT MPR	ORIGINATOR TMA	VOLUME ZZ	LEVEL GF	TYPE SH	ROLE L	NUMBER 100008	REV P03

Planting Schedule

Trees				
Number	Species	Girth	Height	Specification
3 No.	Acer platanoides 'Emerald Queen'	20-25cm	450-500cm	
1 No.	Tilia cordata 'Green Spire'	20-25cm	450-500cm	
5 No.	Prunus avium 'Plena'	20-25cm	4.0-4.5m	
3 No.	Betula utilis jacquemontii		4.0-4.5m	Multistem
5 No.	Acer rubrum	20-25cm	450-500cm	
2 No.	Acer platanoides	20-25cm	450-500cm	
6 No.	Betula pendula 'Fastigiata 'Obelisk'	20-25cm	450-500cm	
4 No.	Sorbus aucuparia	20-25cm	4.0-4.5m	
3 No.	Liquidambar styraciflua	20-25cm	450-500cm	
1 No.	Liquidambar styraciflua	30-35cm	5.0-6.0m	
1 No.	Sorbus aria 'Lutescens'	20-25cm	450-500cm	
4 No.	Pyrus communis 'Louise Bonne of Jersey'	10-12cm	2.5-3.0m	Grafted onto dwarf rooting stock
4 No.	Amelanchier lamarckii	18-20cm	450-500cm	
2 No.	Alnus glutinosa 'Imperialis'	20-25cm	450-625cm	
1 No.	Acer saccharinum	20-25cm	450-500cm	
3 No.	Pinus sylvestris	20-25cm	450-500cm	
1 No.	Liriodendron tulipifera	20-25cm	450-500cm	
1 No.	Sorbus aucuparia 'Cardinal Royal'	20-25cm	450-500cm	
3 No.	Prunus serrulata	20-25cm	4.0-4.5m	
3 No.	Malus 'Rudolph'	20-25cm	450-500cm	

Shrubs					
Number	Species	Pot (L)	Height	Specification	Density
902 No.	Cornus alba 'Aurea'	5L	40-60cm	Bushy :3/4 brks	5/m²
383 No.	Cornus stolonifera 'Flaviramea'	5L	60-80cm	Branched :5 brks	5/m²
268 No.	Crataegus monogyna	5L			No.
104 No.	Rosa canina	5L			No.
268 No.	Carpinus betulus	5L			No.
117 No.	Viburnum opulus	5L		Bushy :5 brks	No.
207 No.	Ilex aquifolium	5L		Leader With Laterals	No.
60 No.	Lavandula angustifolia	5L		Bushy :5/7 brks	5/m²
53 No.	Rosmarinus officinalis	5L	40-60cm	Bushy :min. 6 brks	5/m²
81 No.	Crataegus monogyna	5L			4/m²
2073 No.	Viburnum opulus	5L		Bushy :5 brks	90/m²

Herbaceous				
Number	Species	Pot (L)	Specification	Density
481 No.	Euphorbia amygdaloides var. robbiae	3L	Full pot; fully rooted pot; healthy crown	5/m²
117 No.	Anemone hybrida 'Honorine Jobert'	2L		6/m²
130 No.	Sedum 'Autumn Joy'	3L	Full pot; fully rooted pot; healthy crown	6/m²
136 No.	Rudbeckia fulgida sullivanii 'Goldsturm'	2L	Full pot; fully rooted pot; healthy crown	8/m²
504 No.	Alchemilla mollis	2L	Full pot; fully rooted pot; healthy crown	6/m²
436 No.	Anemone hybrida 'Whirlwind'	2L	Full pot; fully rooted pot; healthy crown	6/m²
563 No.	Hakonechloa macra 'Aureola'	2L	Full pot; fully rooted pot; healthy clump	6/m²
387 No.	Vinca minor 'Alba'	2L		8/m²
160 No.	Anemone nemorosa	2L		8/m²
140 No.	Geranium 'Phaeum'	2L	Full pot; fully rooted pot; healthy crown	6/m²
82 No.	Origanum vulgare	2L		5/m²
159 No.	Alchemilla mollis	2L	Full pot; fully rooted pot; healthy crown	7/m²

159 No.	Alchemilla mollis	2L	Full pot; fully rooted pot; healthy crown	7/m²
105 No.	Perovskia 'Blue spire'	2L	Bushy; min. 3 brks	6/m²
48 No.	Verbena bonariensis	2L	Full pot; fully rooted pot; healthy crown	5/m²

Bulbs				
Number	Species	Grade	Specification	Density
564 No.	Narcissus cultivar	7		30/m²
251 No.	Allium 'Globemaster'	8		15/m²
684 No.	Galanthus nivalis	6		35/m²

Ferns				
Number	Species	Pot (L)	Specification	Density
388 No.	Polystichum aculeatum	2L	Full Pot; fully rooted; healthy clump	6/m²
297 No.	Asplenium scolopendrium	2L		6/m²
426 No.	Dryopteris filix-mas	2L	Full Pot; fully rooted; healthy clump	6/m²
338 No.	Dryopteris affinis 'Cristata'	2L	Full Pot; fully rooted; healthy clump	6/m²

Grasses				
Number	Species	Pot (L)	Specification	Density
205 No.	Stipa tenuissima	3L		6/m²
281 No.	Deschampsia caespitosa	3L	Full Pot; fully rooted; healthy clump	6/m²
156 No.	Luzula sylvatica 'Marginata'	2L	Full Pot; fully rooted; healthy clump	6/m²
82 No.	Stipa tenuissima	2L		6/m²
73 No.	Miscanthus sinensis 'Kleine Fontane'	2L	Full Pot; fully rooted; healthy clump	6/m²

Climbing Plants				
Number	Species	Pot (L)	Specification	Density
6 No.	Parthenocissus henryana	3L	3/4 brks :Caned	1/m²
10 No.	Hedera helix 'Pedata'	3L	Branched :5 brks	0.5/m²
12 No.	Hydrangea petiolaris	5-7.5L	3/4 brks :Caned	1/m²
7 No.	Lonicera japonica 'Halliana'	3L	3/4 brks :Caned	0.25/m²

Meadow planting, Standard General Purpose Meadow Mixture - EM2 by Emorsgate Seeds or equal

To contain the following species:

Wildflowers:
 Achillea millefolium
 Centaurea nigra
 Daucus carota
 Wild Carrot
 Galium verum
 Lady's Bedstraw
 Knautia arvensis
 Leontodon hispidus
 Leucanthemum vulgare
 Malva moschata
 Plantago lanceolata
 Poterium sanguisorba - (Sanguisorba minor)
 Primula veris
 Prunella vulgaris
 Ranunculus acris
 Rhinanthus minor
 Rumex acetosa

Grasses:
 Agrostis capillaris
 Cynosurus cristatus
 Festuca rubra
 Phleum bertolonii