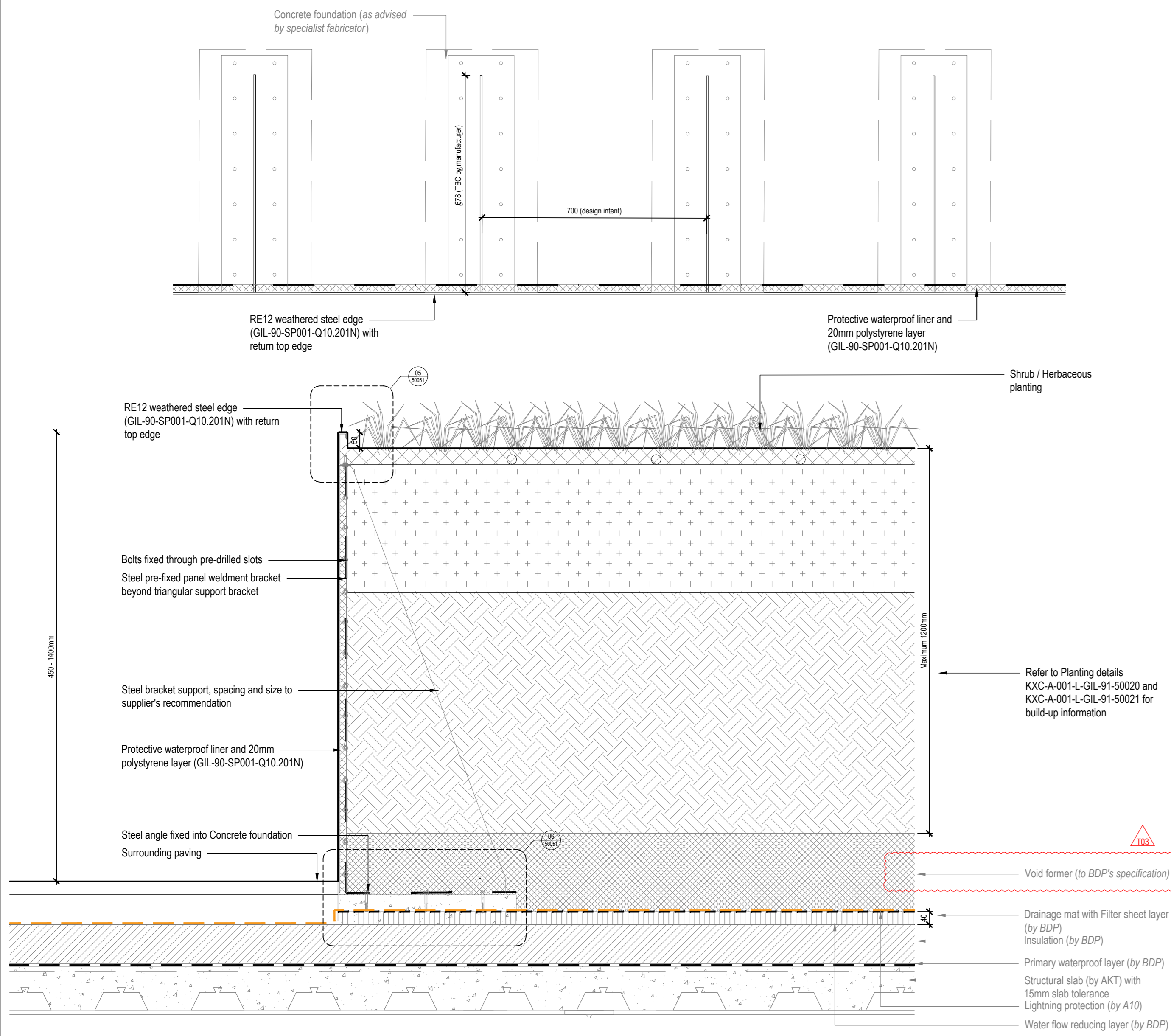
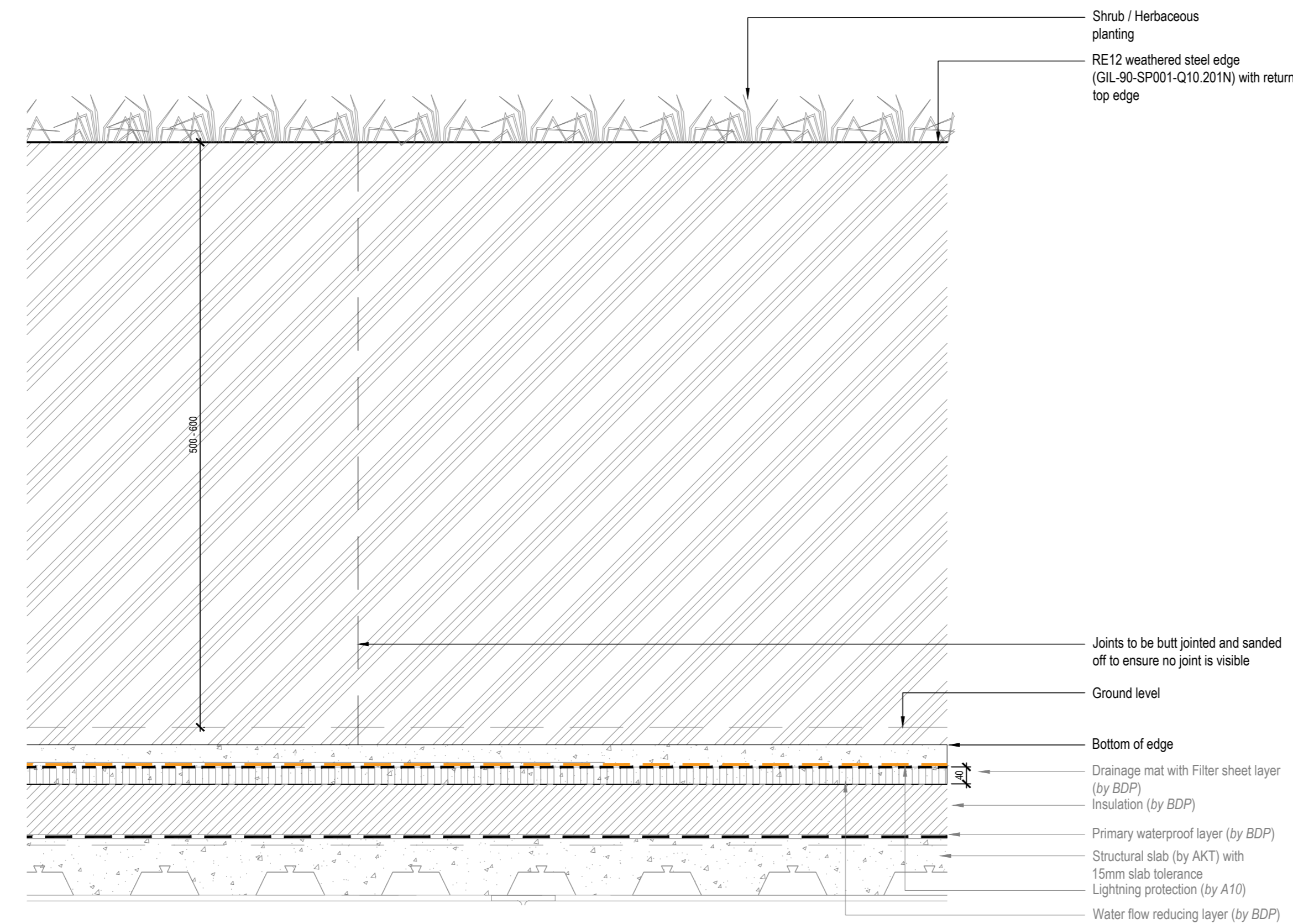


NOTE:
SHOP DRAWINGS WILL BE REQUIRED FOR ALL WEATHERING STEEL EDGES AND APPROVED BY EMPLOYER

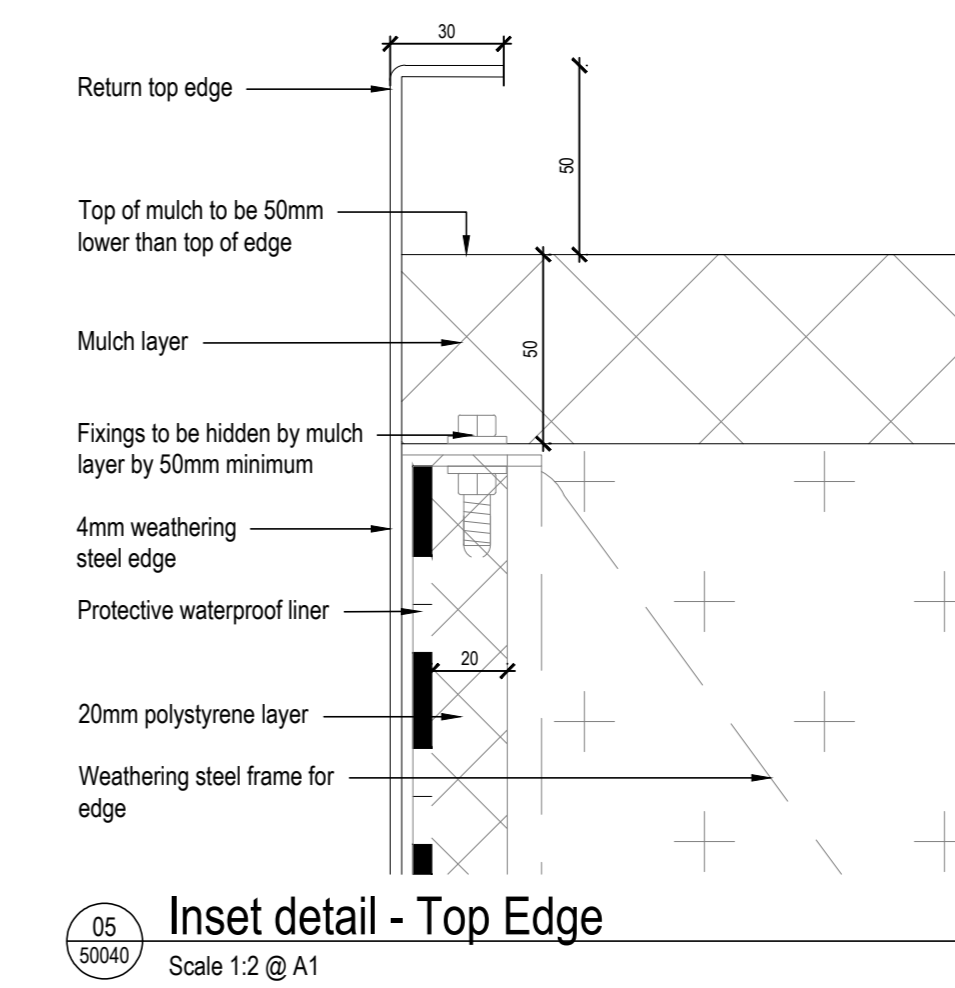
- NOTES:
- Do not scale from drawing, use figured dimensions only
 - All dimensions to be checked onsite
 - This drawing to be read in conjunction with all other Gillespies drawings and specifications
 - For General Arrangement Landscape Plan, refer to KXC-A-001-L-GIL-00-11201
 - For Overall Levels Plan, refer to KXC-A-001-L-GIL-00-11202
 - For Hard Materials Plans, refer to KXC-A-001-L-GIL-00-11211/11212/11213/11214/11215
 - For Walls and Edges Plans, refer to KXC-A-001-L-GIL-00-11221/11222/11223/11224/11225



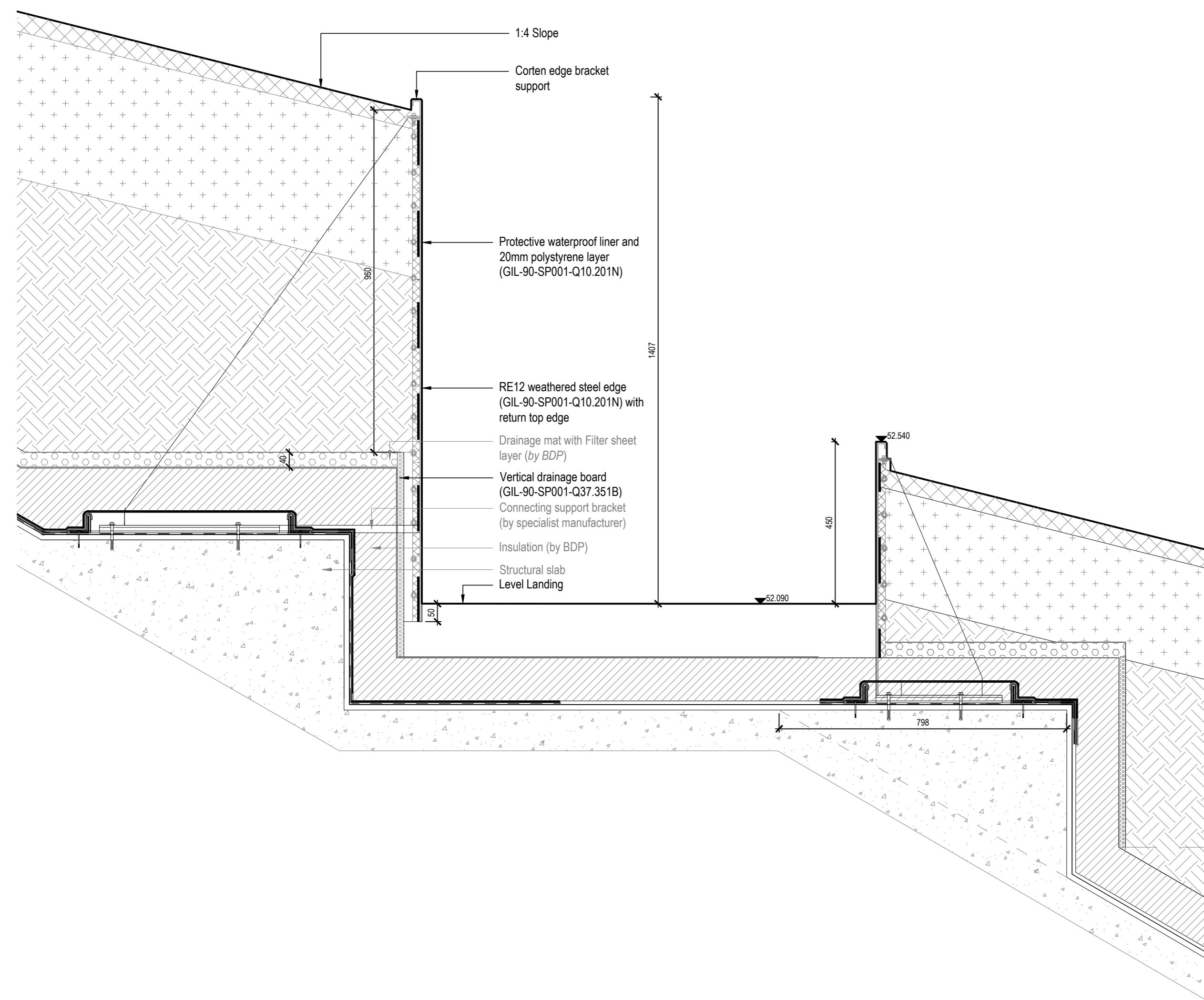
01 Typical Edge Type RE12 (450 - 1400mm Steel edge) - Plan and Section
Scale 1:10 @ A0



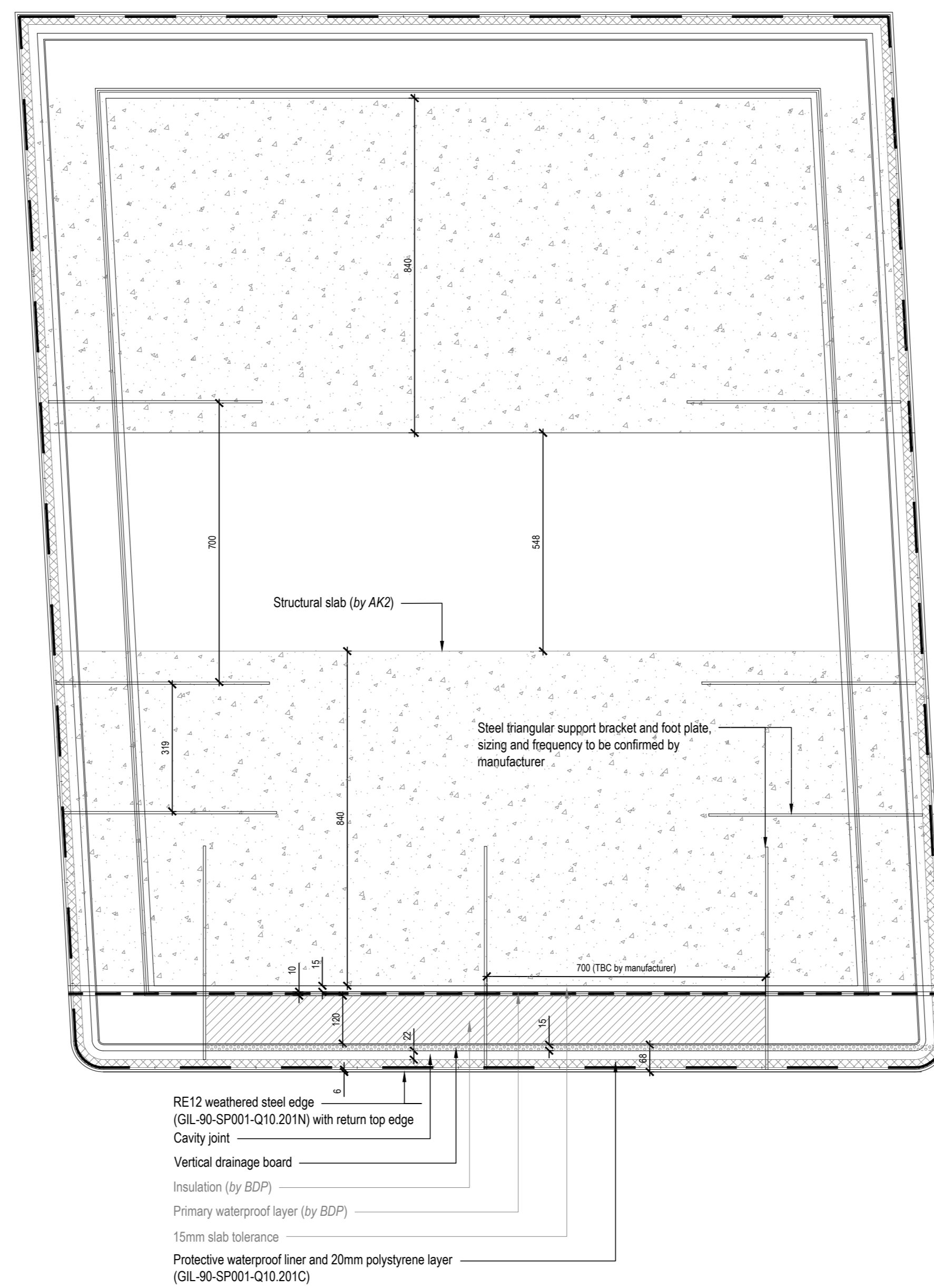
02 Typical Edge Type RE12 (450 - 1400mm Steel edge) - Elevation
Scale 1:10 @ A0



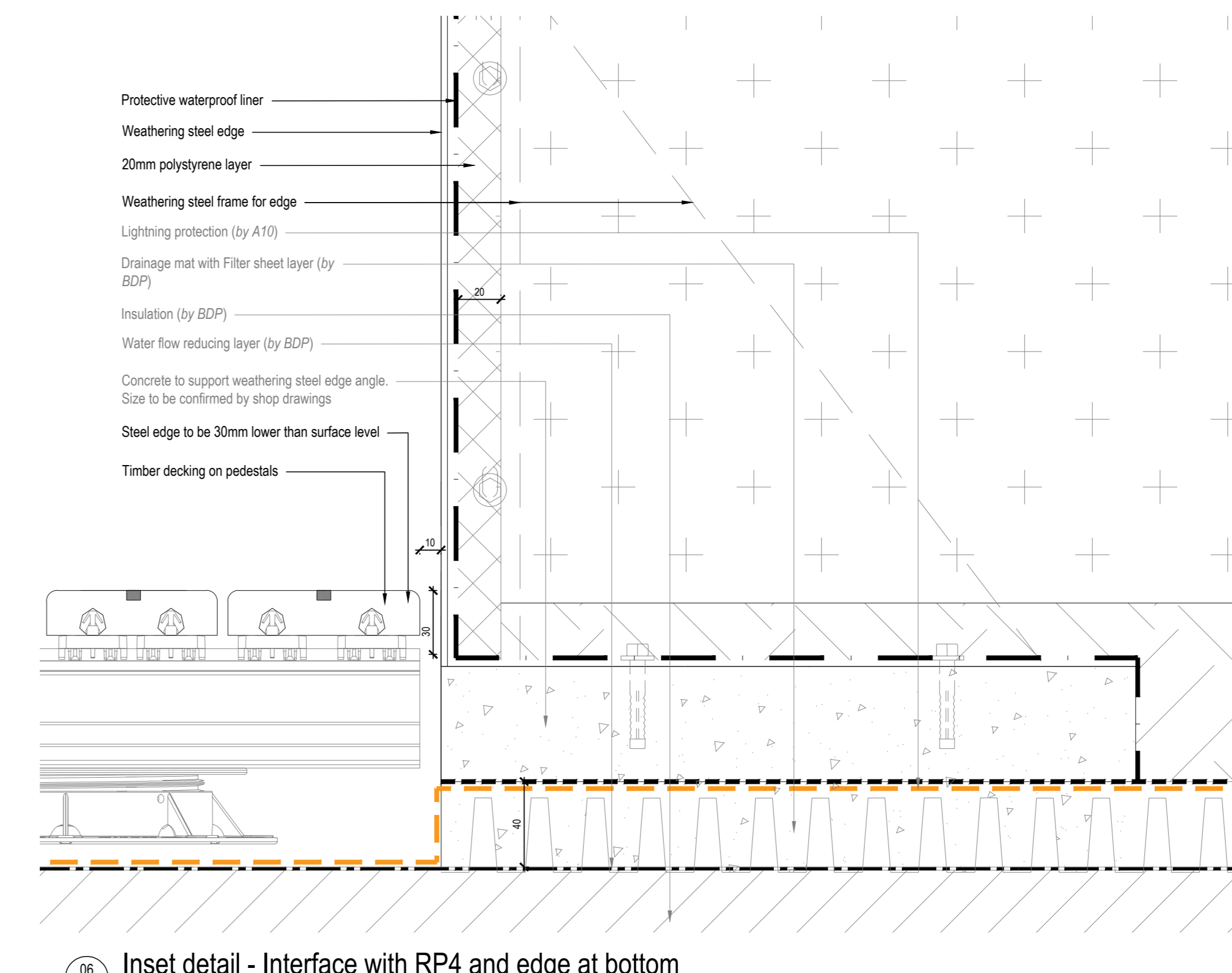
05 Inset detail - Top Edge
Scale 1:2 @ A1



03 Typical Edge Type RE12 (450 - 1400mm Steel edge) - Section through steps
Scale 1:10 @ A0



04 Typical Edge Type RE12 (450 - 1400mm Steel edge) - Typical plan
Scale 1:10 @ A0



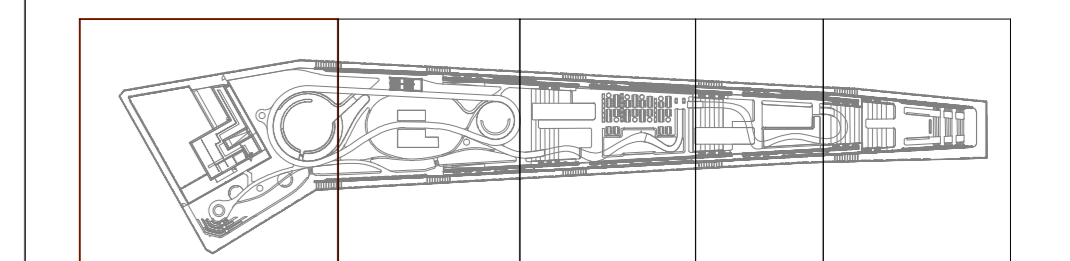
06 Inset detail - Interface with RP4 and edge at bottom
Scale 1:2 @ A0

REVISION	DESCRIPTION	DRAWN	CHECKED	DATE
T03	For Tender (void former update)	SH	AM	04.04.18
T02	Stage 4 Update	SH	AM	15.12.17
T01	Stage 4 Issue	SH	AM	29.09.17
P00	Issued for Stage 4 (75% Issue)	CD	AM	21.07.17

GILLESPIES

1 St John's Square, London EC1M 4DH
P: 020 7533 2029 F: 020 7533 3900 E: design.london@gillespies.co.uk

© copyright GILLESPIES LLP, all rights reserved



FOR TENDER

Proposed Roof - Typical Edge Details RE12

KXC-A-001-L-GIL-90-50051

Date: 21.07.17
Project No: P2007133
Scale: 1:100
Rev: CD
Drawn: CD
Checked: AM
Rev: T03

