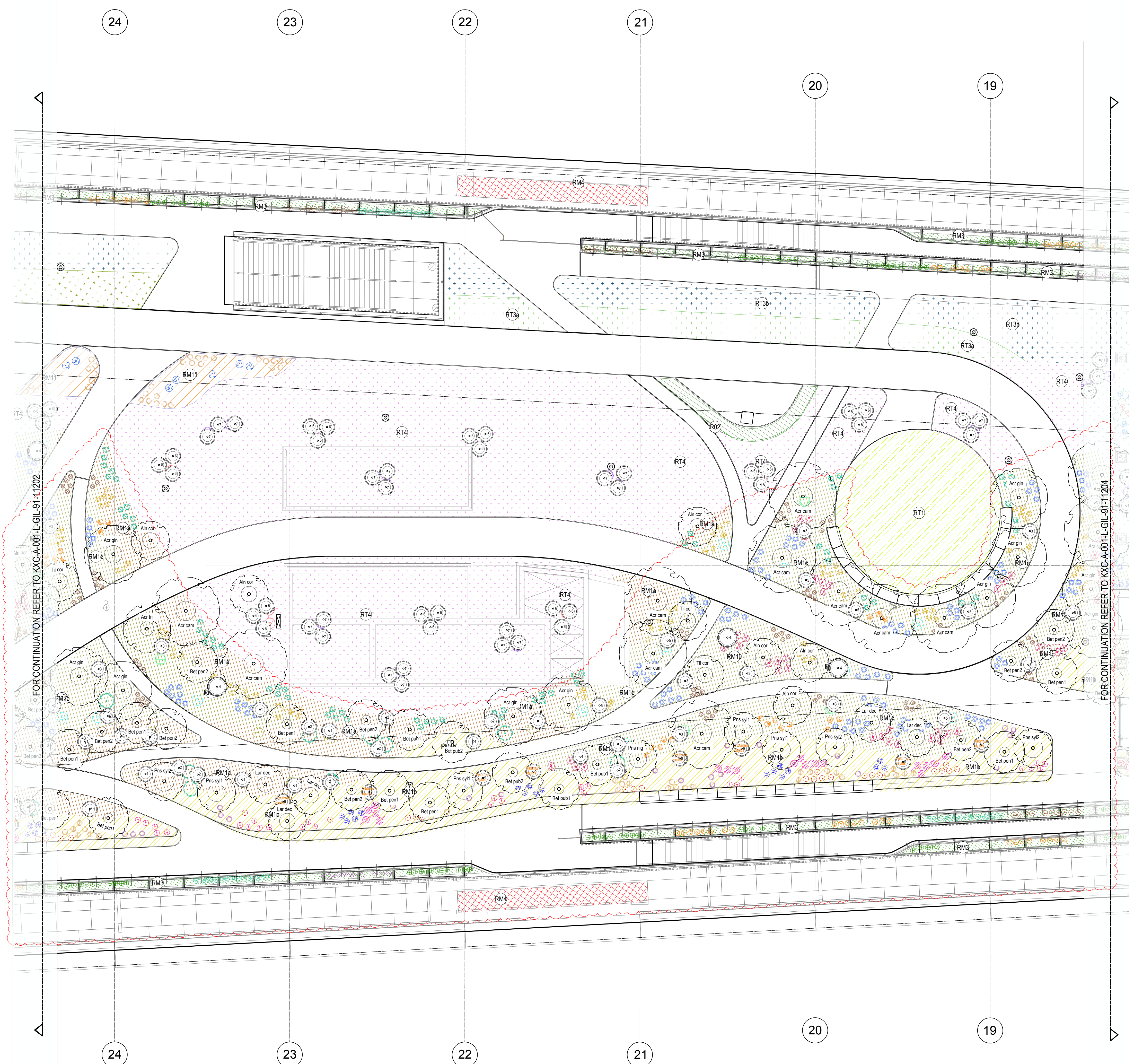


NOTES:
1.0 Do not scale from drawing, use figured dimensions only
1.1 All dimensions to be checked onsite
1.2 This drawing to be read in conjunction with all other Gillespies drawings and specifications
1.3 For General Arrangement Landscape Plan, refer to KXC-A-001-L-GIL-00-11201
1.4 For Overall Site Plan, refer to KXC-A-001-L-GIL-00-11202
1.5 For Overall Site Plan, refer to KXC-A-001-L-GIL-00-11203
1.6 For Overall Site Plan, refer to KXC-A-001-L-GIL-00-11204
1.7 For Overall Site Plan, refer to KXC-A-001-L-GIL-00-11205
1.8 For Overall Site Plan, refer to KXC-A-001-L-GIL-00-11206
1.9 For Overall Site Plan, refer to KXC-A-001-L-GIL-00-11207
1.10 For Overall Site Plan, refer to KXC-A-001-L-GIL-00-11208
1.11 For Overall Site Plan, refer to KXC-A-001-L-GIL-00-11209
1.12 For Overall Site Plan, refer to KXC-A-001-L-GIL-00-11210
1.13 For Overall Site Plan, refer to KXC-A-001-L-GIL-00-11211
1.14 For Overall Site Plan, refer to KXC-A-001-L-GIL-00-11212
1.15 For Overall Site Plan, refer to KXC-A-001-L-GIL-00-11213
1.16 For Overall Site Plan, refer to KXC-A-001-L-GIL-00-11214
1.17 For Overall Site Plan, refer to KXC-A-001-L-GIL-00-11215
1.18 For Overall Site Plan, refer to KXC-A-001-L-GIL-00-11216
1.19 For Overall Site Plan, refer to KXC-A-001-L-GIL-00-11217
1.20 For Overall Site Plan, refer to KXC-A-001-L-GIL-00-11218
1.21 For Overall Site Plan, refer to KXC-A-001-L-GIL-00-11219
1.22 For Overall Site Plan, refer to KXC-A-001-L-GIL-00-11220
1.23 For Overall Site Plan, refer to KXC-A-001-L-GIL-00-11221
1.24 For Overall Site Plan, refer to KXC-A-001-L-GIL-00-11222
1.25 For Overall Site Plan, refer to KXC-A-001-L-GIL-00-11223
1.26 For Overall Site Plan, refer to KXC-A-001-L-GIL-00-11224
1.27 For Overall Site Plan, refer to KXC-A-001-L-GIL-00-11225
1.28 For Overall Site Plan, refer to KXC-A-001-L-GIL-00-11226
1.29 For Overall Site Plan, refer to KXC-A-001-L-GIL-00-11227
1.30 For Overall Site Plan, refer to KXC-A-001-L-GIL-00-11228
1.31 For Overall Site Plan, refer to KXC-A-001-L-GIL-00-11229
1.32 For Overall Site Plan, refer to KXC-A-001-L-GIL-00-11230
1.33 For Overall Site Plan, refer to KXC-A-001-L-GIL-00-11231
1.34 For Overall Site Plan, refer to KXC-A-001-L-GIL-00-11232
1.35 For Overall Site Plan, refer to KXC-A-001-L-GIL-00-11233
1.36 For Overall Site Plan, refer to KXC-A-001-L-GIL-00-11234
1.37 For Overall Site Plan, refer to KXC-A-001-L-GIL-00-11235
1.38 For Overall Site Plan, refer to KXC-A-001-L-GIL-00-11236
1.39 For Overall Site Plan, refer to KXC-A-001-L-GIL-00-11237
1.40 For Overall Site Plan, refer to KXC-A-001-L-GIL-00-11238
1.41 For Overall Site Plan, refer to KXC-A-001-L-GIL-00-11239
1.42 For Overall Site Plan, refer to KXC-A-001-L-GIL-00-11240
1.43 For Overall Site Plan, refer to KXC-A-001-L-GIL-00-11241
1.44 For Overall Site Plan, refer to KXC-A-001-L-GIL-00-11242
1.45 For Overall Site Plan, refer to KXC-A-001-L-GIL-00-11243
1.46 For Overall Site Plan, refer to KXC-A-001-L-GIL-00-11244
1.47 For Overall Site Plan, refer to KXC-A-001-L-GIL-00-11245
1.48 For Overall Site Plan, refer to KXC-A-001-L-GIL-00-11246
1.49 For Overall Site Plan, refer to KXC-A-001-L-GIL-00-11247
1.50 For Overall Site Plan, refer to KXC-A-001-L-GIL-00-11248
1.51 For Overall Site Plan, refer to KXC-A-001-L-GIL-00-11249
1.52 For Overall Site Plan, refer to KXC-A-001-L-GIL-00-11250



KEY

- Trees
Total: 234 trees
- RT1: Turf lawn for sunny areas
- RT3a: Wildflower meadow
Soil build up 300 mm.
- RT3b: Wildflower meadow
Soil build up 300 mm.
- RT4: Grassland
Soil build up 300 mm
- RM1a: Woodland Edge, Native and ornamental woody/ herbaceous species.
Soil build up 490-1200 mm
- Mix RM1b: Woodland Wind Buffer, Native and ornamental woody/ herbaceous species.
Soil build up 490-1200 mm
- RM1c: Woodland Edge, Native and ornamental woody/ herbaceous species.
Soil build up 490-1200 mm
- RM2: Planted slopes, Mostly evergreen and wind resistant species.
Soil build up 300 - 1150 mm
- RM3: Perimeter planted beds, Mostly evergreen and wind resistant species.
Soil build up 500 mm
- RM4: Biodiverse green roof, Low growing species adapted for green roofs - wildflower species.
For BMU Planters, refer to KXC-A-001-L-GIL-91-50024 and KXC-A-001-L-GIL-91-50025
- RM5: Fields, Ornamental and officinal/ herb species
Soil build up 490-1200 mm
- RM6: Garden, Ornamental woody and herbaceous species.
Soil build up 490-1200 mm
- RM7: Headlands, Ornamental woody and herbaceous species.
Soil build up 490-1200 mm
- RM11: Entrance beds
- R01a: Climber plants
- R01b: Climber plants
- R02: Hedge
- R03: Hedge

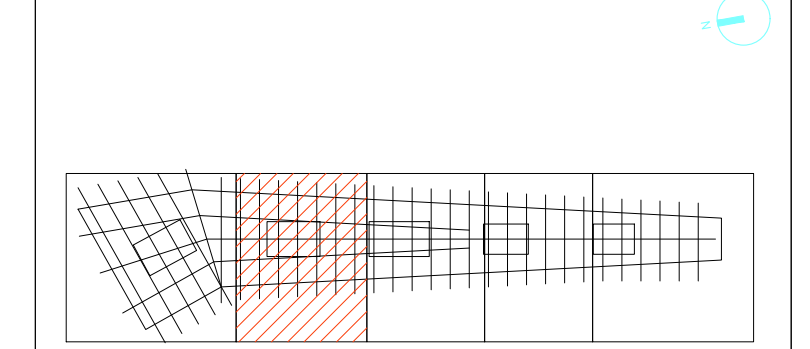
Shrubs

- Juniperus communis
- Pinus mugo 'Pumilio'
- Salix lantana
- Vaccinium myrtillus
- Viburnum opulus
- Corylus avellana
- Chimonanthus praecox
- Fothergilla gardenii
- Hamamelis (Hamamelis x intermedia 'Fauerauber' and Hamamelis x intermedia 'Primavera')
- Sarcococca confusa
- Ruscus aculeatus
- Sambucus nigra
- Rhus tyhina
- Parabebe 'Kenty Pink'
- Rosa pimpinellifolia
- Pittosporum tobira 'Nanum'
- Salix helvetica
- Rosmarinus officinalis 'Prostatu'
- Calluna vulgaris
- Prunus laurocerasus 'Otto Luyken'
- Rosmarinus officinalis 'Tuscan Blue'
- Pinus nigra 'Nana'
- Ribes rubrum
- Euonymus alatus (15L pot)
- Euonymus alatus (25L pot)
- Salix rosmarinoifolia
- Hydrangea quercifolia 'Sikes'
- Viburnum nudum 'Pink'
- Myrica gale
- Acoria melanocarpa
- Betula pendula
- Arbutus unedo
- Nandina domestica
- Cornus sanguinea
- Giselinia littoralis

C01	For Construction (CRP 1392)	CS	AM	19.10.20
T04	For Tender (CRP14 & CRP15)	JQ	AM	31.10.19
T03	For Tender	GG	AM	27.02.18
T02	Stage 4 Update	JQ	AM	15.12.17
T01	Stage 4 Issue	JQ	AM	09.09.17
PO1	Issued for Stage 4 (85% ISSUE)	JQ	AM	11.08.17
PO0	Issued for Stage 4 (75% ISSUE)	CD	AM	21.97.17



© copyright GILLESPIES LLP, all rights reserved



FOR CONSTRUCTION

21.07.17
F2007133
1:100
AD
MB
AM

KXC-A-001-L-GIL-91-11203 C01