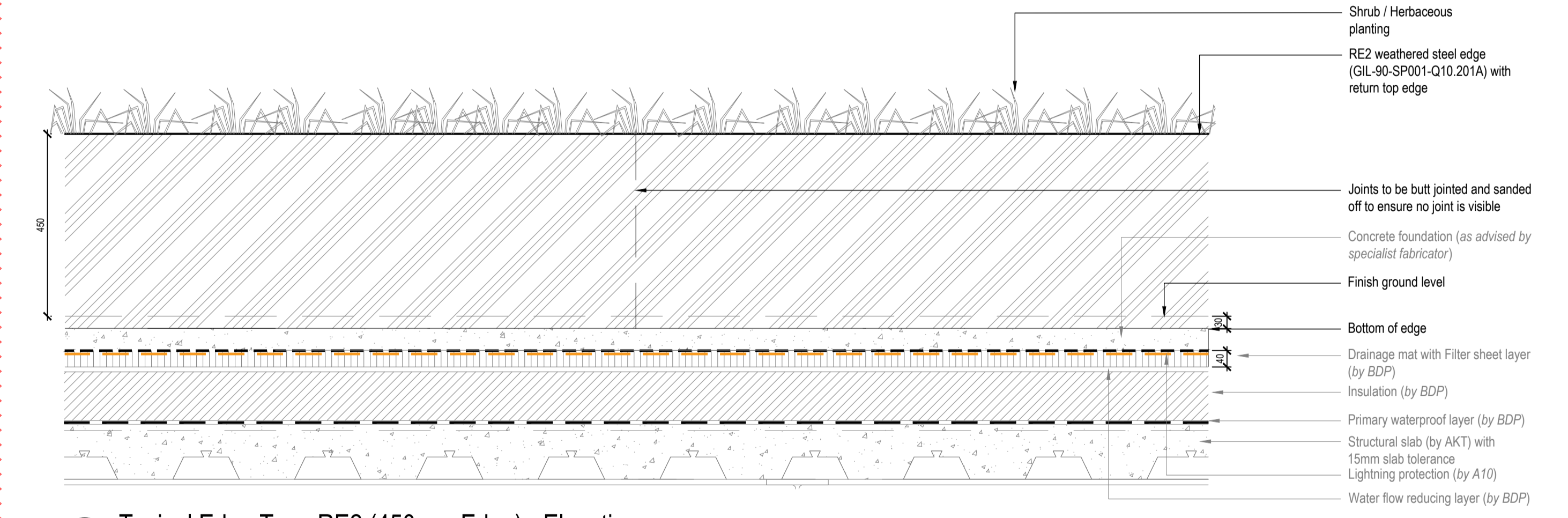
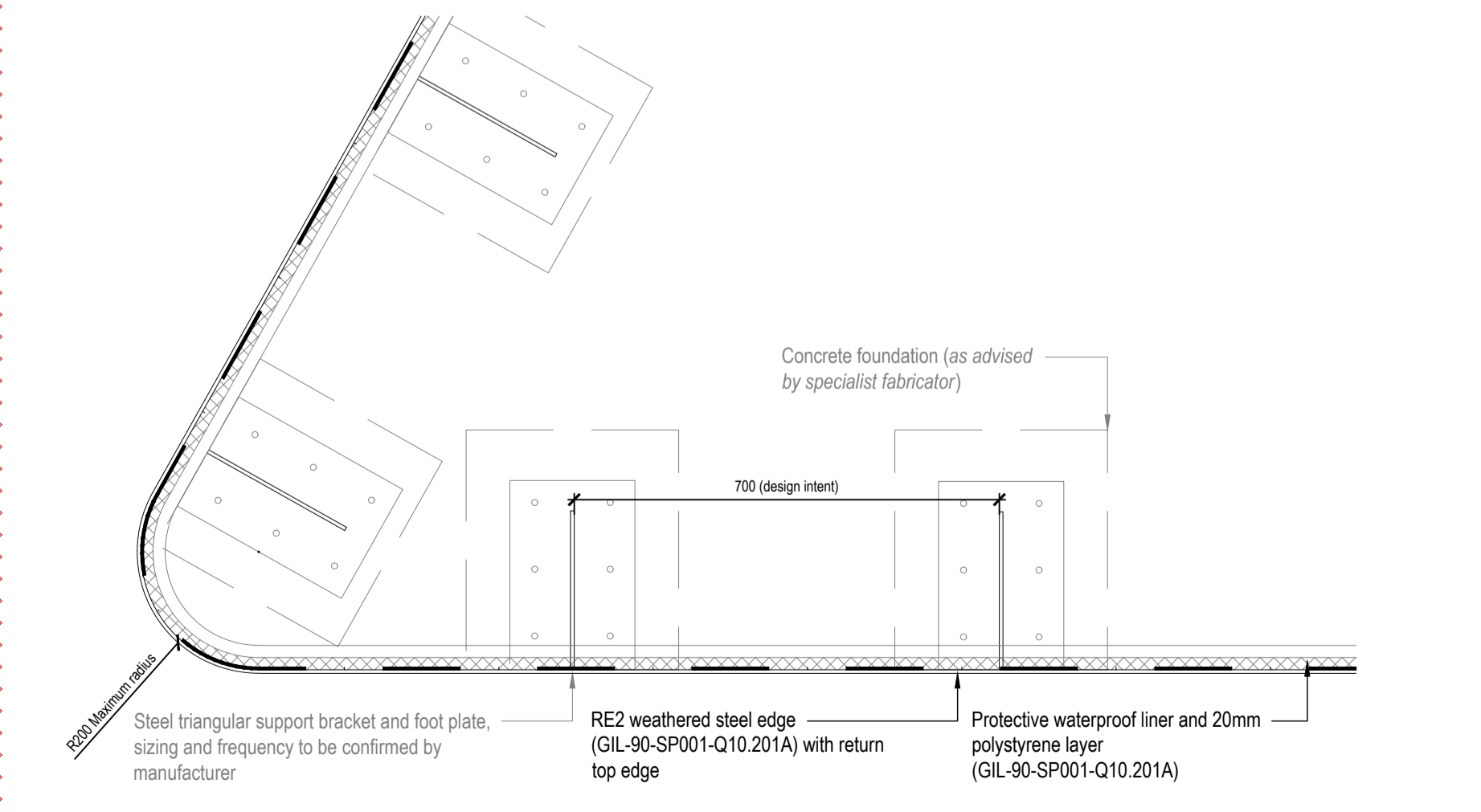


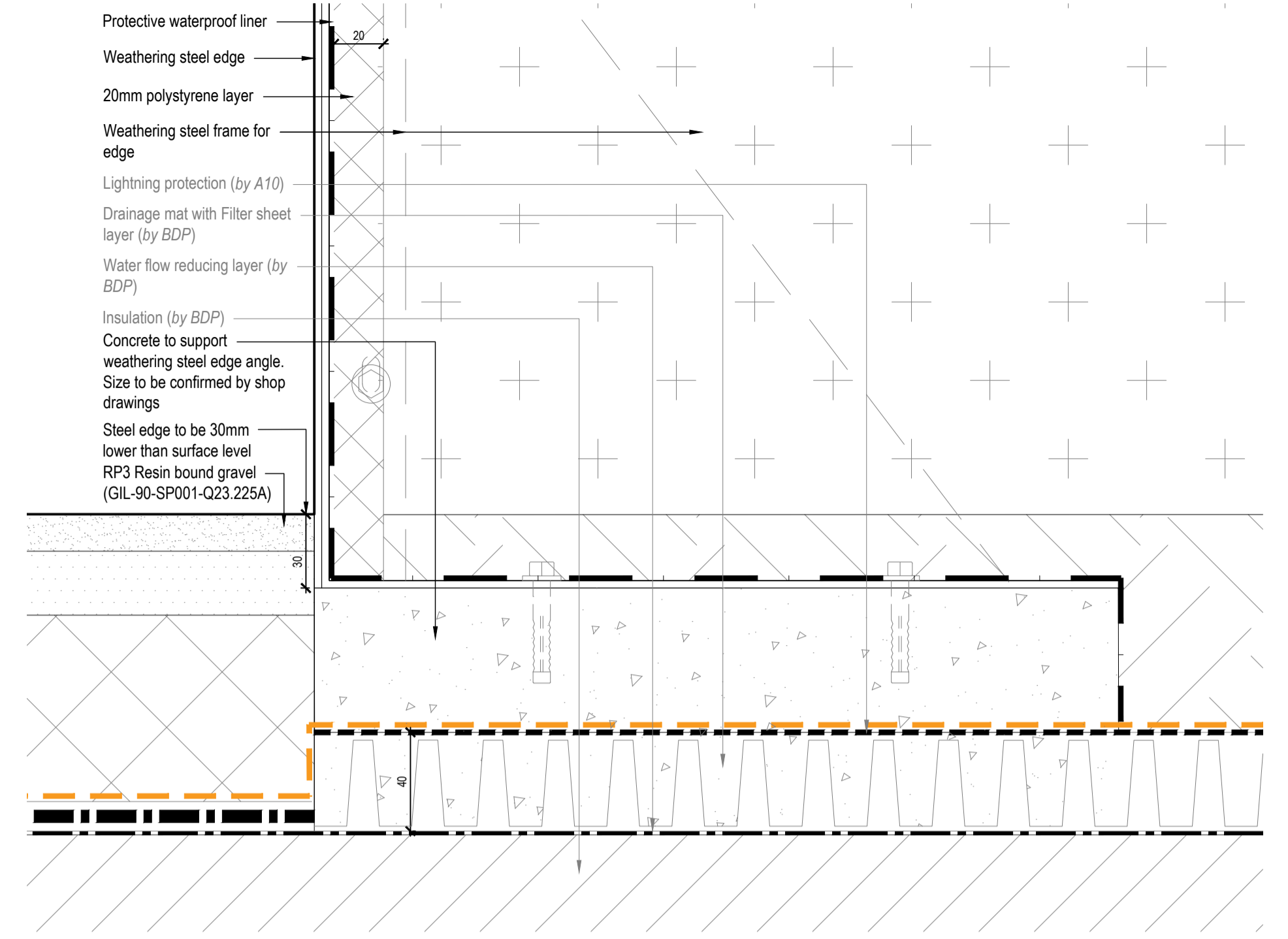
01  
50041  
Typical Edge Type RE2 (450mm Edge) - Plan and Section  
Scale 1:10 @ A1



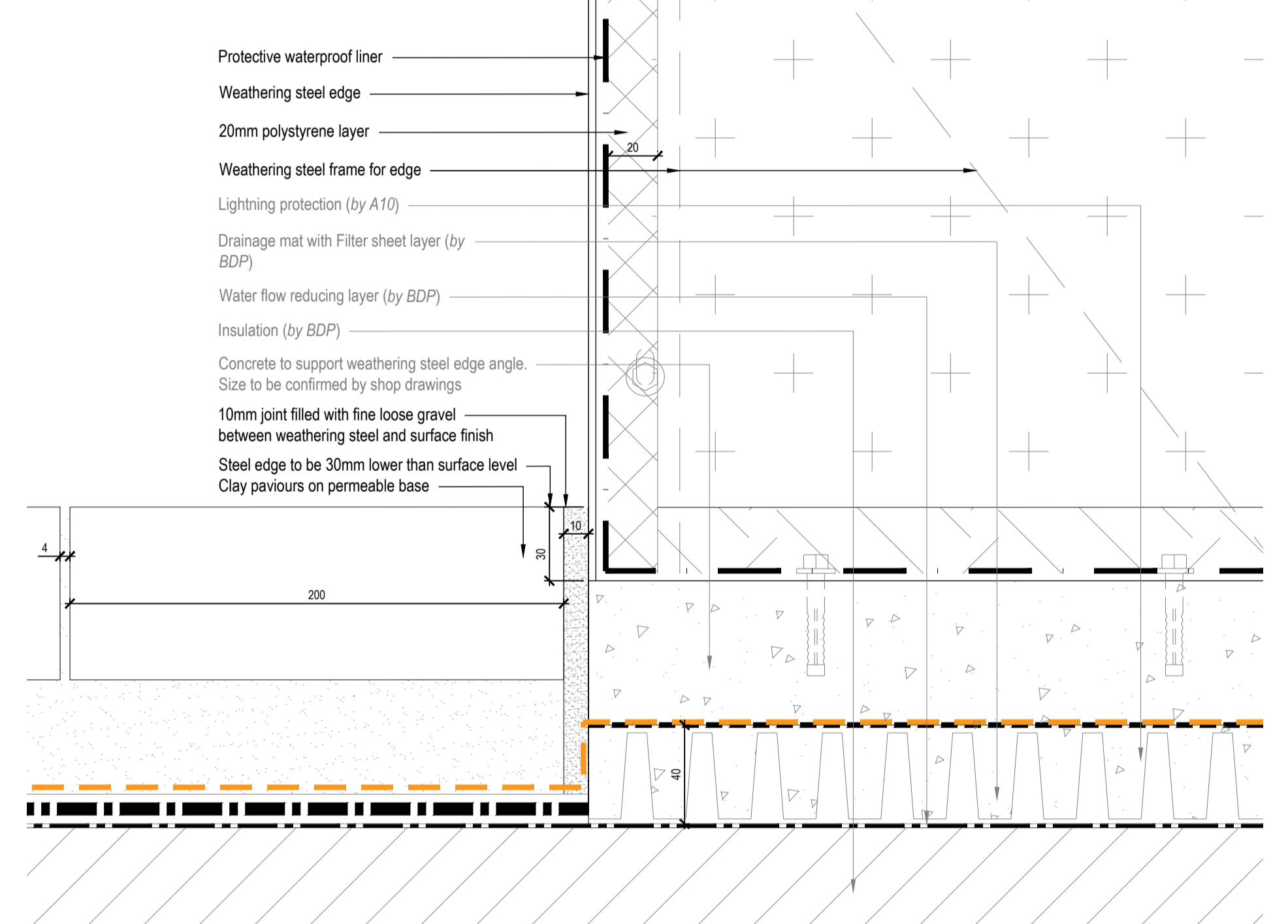
02  
50041  
Typical Edge Type RE2 (450mm Edge) - Elevation  
Scale 1:10 @ A1



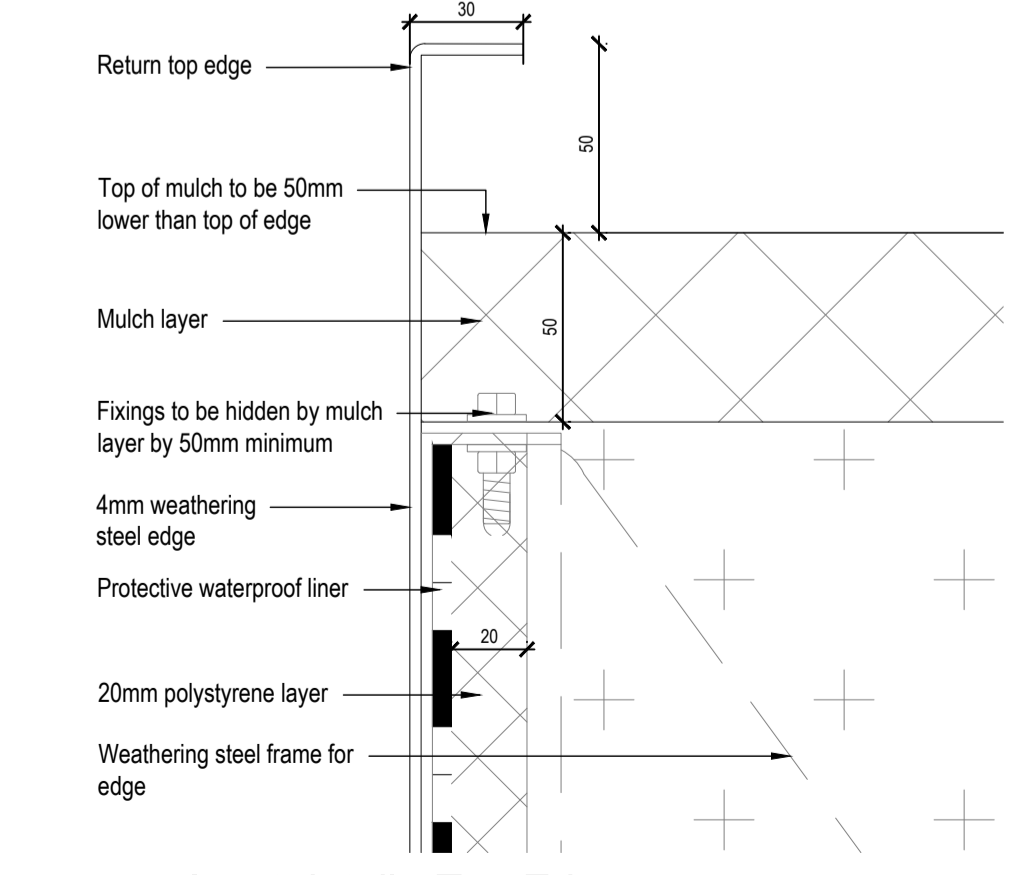
03  
50041  
Typical Edge Type RE2 (450mm Edge) - Plan of curved radius  
Scale 1:10 @ A1



04  
50041  
Inset detail - Interface with RP3 and edge at bottom  
Scale 1:2 @ A1



05  
50041  
Inset detail - Interface with RP2 and edge at bottom  
Scale 1:2 @ A1



06  
50041  
Inset detail - Top Edge  
Scale 1:2 @ A1

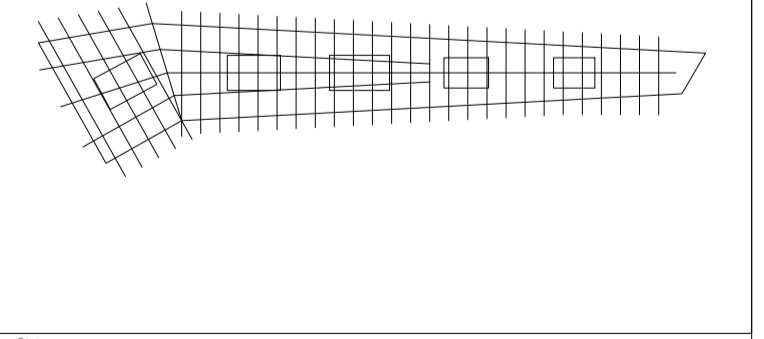
**NOTE:**  
SHOP DRAWINGS WILL BE REQUIRED FOR ALL WEATHERING STEEL EDGES AND APPROVED BY EMPLOYER

NOTES:  
1.0 Do not scale from drawing, use figured dimensions only  
1.1 All dimensions to be checked onsite  
1.2 This drawing to be read in conjunction with all other Gillespies drawings and specifications  
1.3 For General Arrangement Landscape Plan, refer to KXC-A-001-L-GIL-00-11201  
1.4 For Hard Materials, refer to KXC-A-001-L-GIL-00-11211 / 11212 / 11213 / 11214 / 11215  
1.5 For Walls and Edges, refer to KXC-A-001-L-GIL-00-11221 / 11222 / 11223 / 11224 / 11225  
1.6 For Overall Levels Plan, refer to KXC-A-001-L-GIL-00-11232  
1.7 For Detailed Levels, refer to KXC-A-001-L-GIL-00-11231 / 11232 / 11233 / 11234 / 11235  
1.8 For Landscape Roof specifications refer to KXC-A-001-L-GIL-90-SP001  
1.9 For Waterscapes information refer to KXC-A-001-A-WSL-91-09602 / 11201 / 50002 / 50003 / 50004 / 50005 / RP001 / RP002

REVISION	DESCRIPTION	ISSUED	DESIGNED	DATE
T02	Stage 4 Update	SH	AM	15.12.17
T01	Stage 4 issue	SH	AM	29.09.17
P02	Issued for Stage 4 (75% ISSUE)	MB	SH	21.07.17
P01	Issued for Stage 4 (50% ISSUE)	CD	AM	20.06.17
P00	Issued for Stage 3	SH	AM	25.01.17

**GILLESPIES**  
1 St John's Square, London EC4M 4DH  
P: 020 7253 2529 F: 020 7253 3900 E: design.london@gillespies.co.uk

© copyright GILLESPIES LLP, all rights reserved



FOR TENDER

Title	21.07.17
Project No.	P2007133
Scale	AS SHOWN
Size	A1
Drawn	MB
Checked	SH
Drawing No.	KXC-A-001-L-GIL-90-50041
Rev.	T02

