

- General Notes:**
- 01: Facade design incl. specification and details provided by Facade Specialist.
  - 02: Refer to Landscape Architects drawings for roof detailing, nosing details and timber walkway details
  - 03: Refer to AKT II drawings for structural engineers design and setting out
  - 04: Refer to Lighting Consultants documentation
  - 05: Please allow channel for lighting protection tape to be fixed prior to the cladding. Refer to lighting protection layout by A10

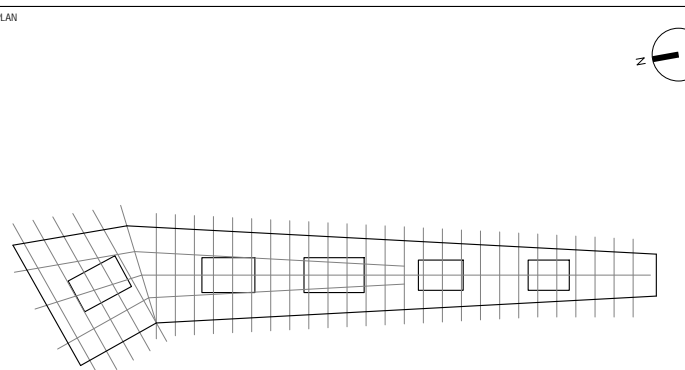
This drawing should be read in conjunction with the following drawings:

KXC-A-001-A-BDP-27-50026  
KXC-A-001-A-BDP-27-50040  
KXC-A-001-A-BDP-27-50006  
KXC-A-001-A-BDP-31-50001

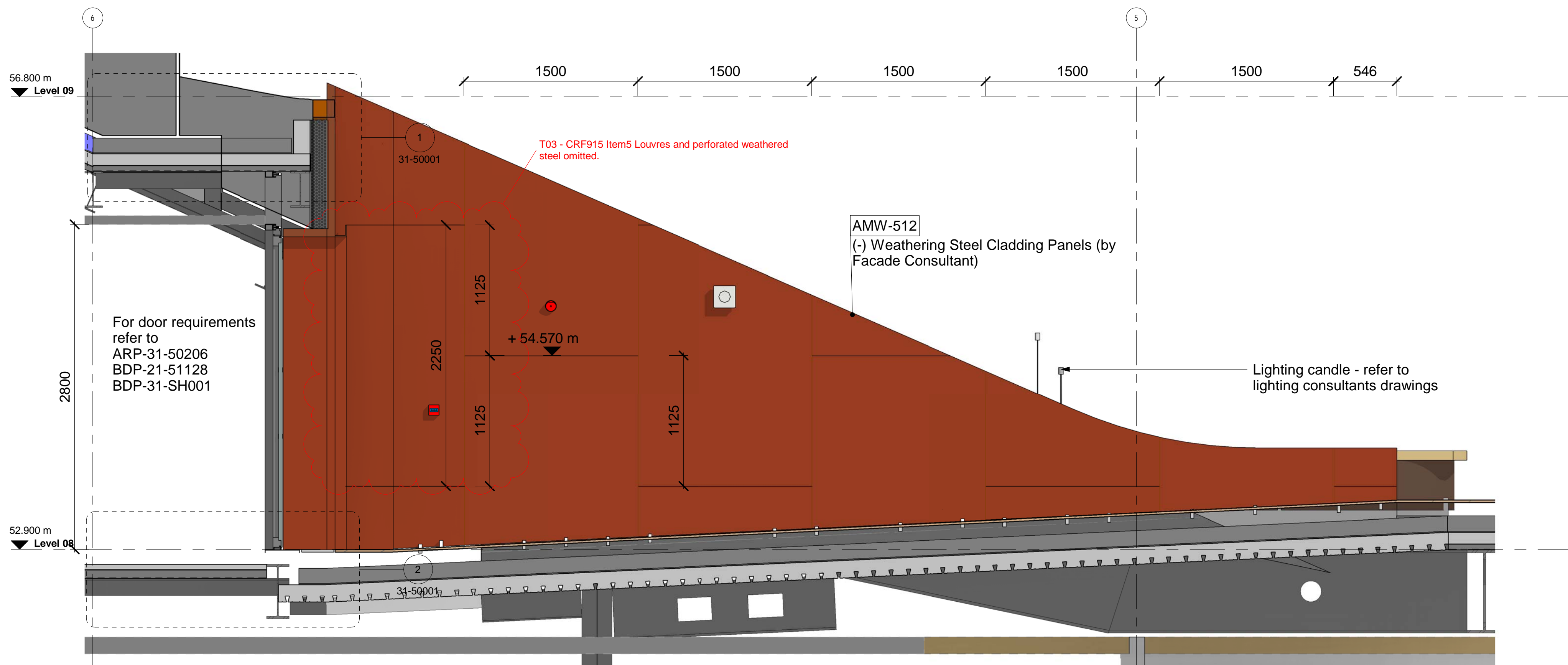
T03	Updated as indicated: CRP 915	WT	AE	04.10.19
T02	Stage 4 Update Tender Issue	FM	JE	15.12.17
T01	Stage 4 Issue	FM	JE	29.09.17

**BDP.**

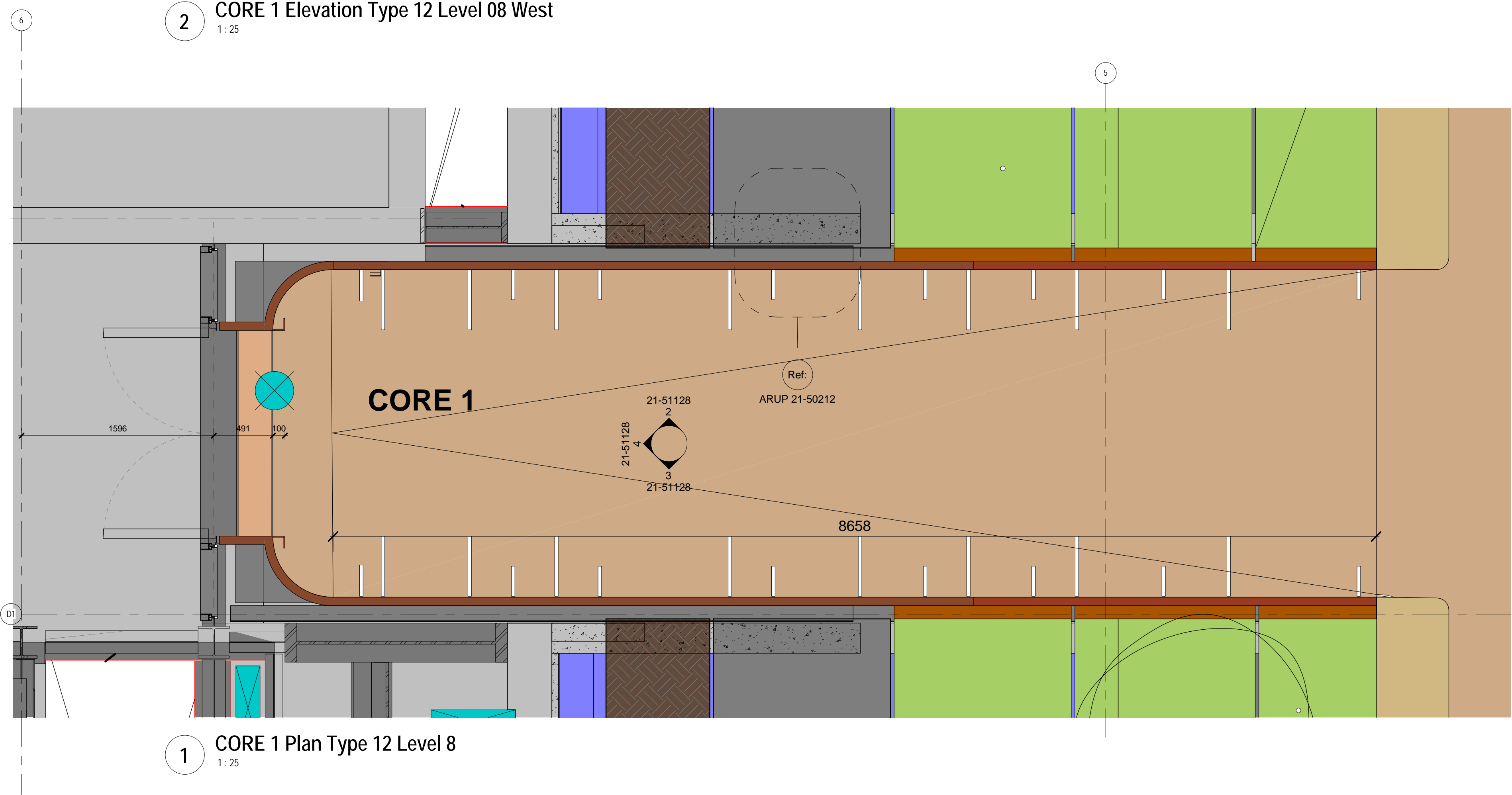
16 Brewhouse Yard  
Clerkenwell  
London  
EC1V 4LJ  
United Kingdom  
T +44 (0)20 7812 8000  
www.bdp.com



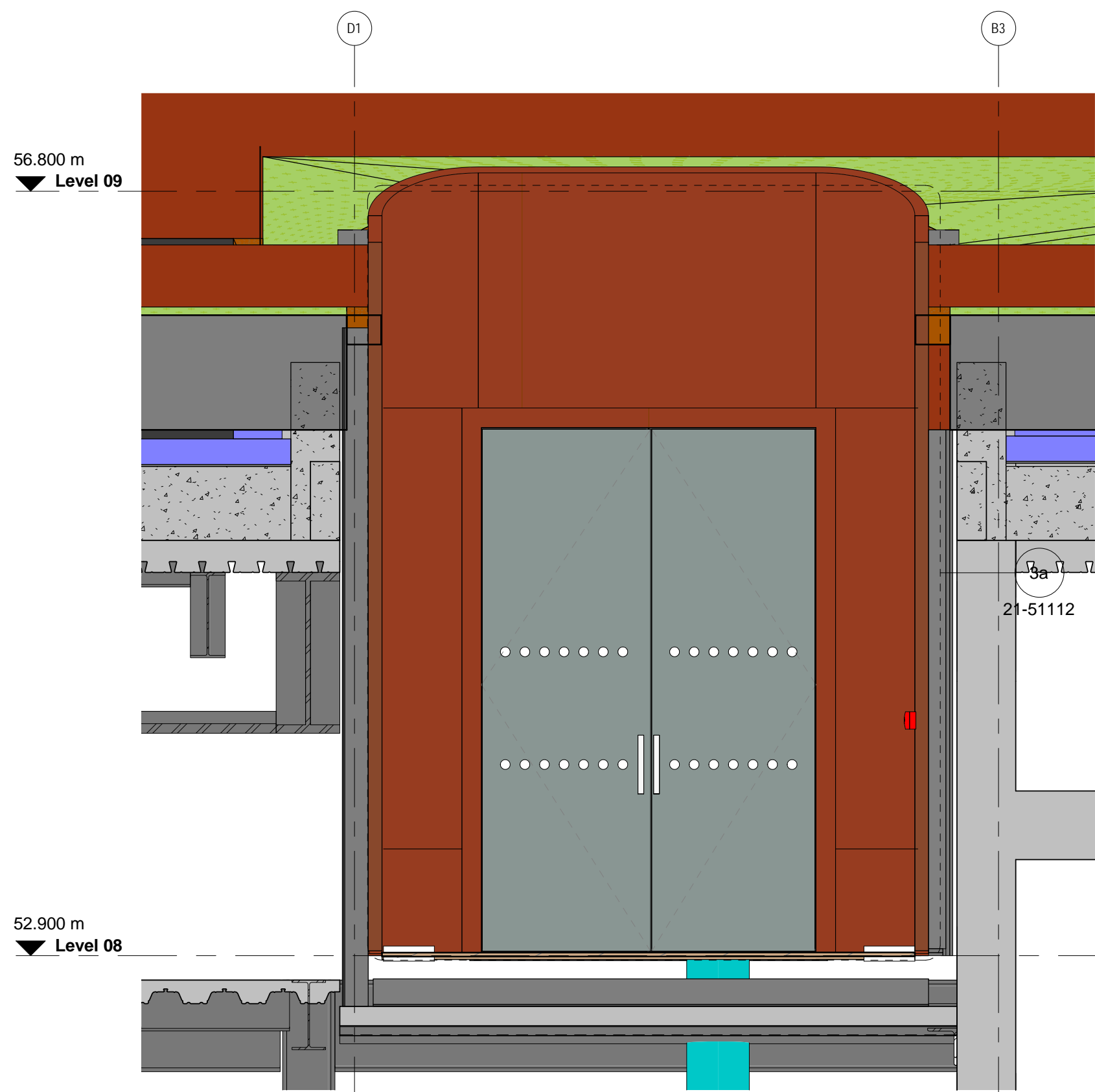
FOR TENDER			
Date	08/22/17	Drawn	JE
Title	Cladding details - Roof	Project	P2007133
	Facade - Type 12 Metal	Scale	1 : 25
	Cladding - Core 1	Size	A0
		Client	DC
		Contract	JE
Drawing No.	KXC-A-001-A-BDP-21-51128	Rev	T03



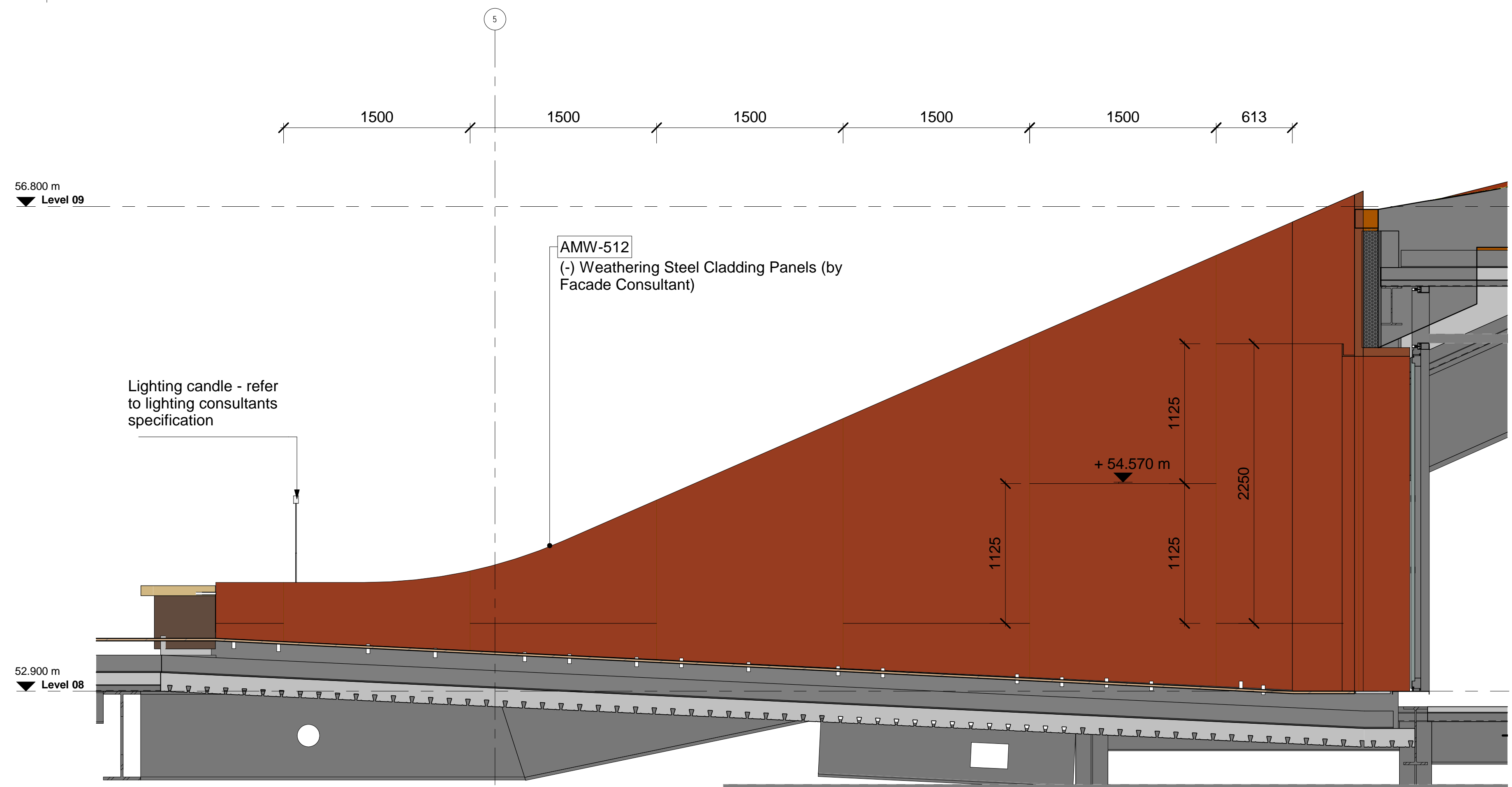
2 CORE 1 Elevation Type 12 Level 08 West  
1:25



1 CORE 1 Plan Type 12 Level 8  
1:25



4 CORE 1 Elevation Type 12 Level 8 Entrance  
1:25



3 CORE 1 Elevation Type 12 Level 08 East  
1:25