

Building Design Partnership shall have no responsibility for any use made of this document other than for that which it was prepared and issued.

All dimensions should be checked on site.
Do not scale from this drawing.

Any drawing errors or divergences should be brought to the attention of Building Design Partnership at the address shown below.

Drawings shall be read in conjunction with the following before work commences:

- The CDM design issues register
- The BDP risk series of drawings
- The project CDM risk register

General Notes:

- 01: Facade design incl. specification and details provided by Facade Specialist.
- 02: Refer to Landscape Architects drawings for roof detailing, nosing details and timber walkway details
- 03: Refer to AKT II drawings for structural engineers design and setting out
- 04: Refer to Lighting Consultants documentation
- 05: Please allow channel for lighting protection tape to be fixed prior to the cladding. Refer to lighting protection layout by A10

This drawing should be read in conjunction with the following drawings:

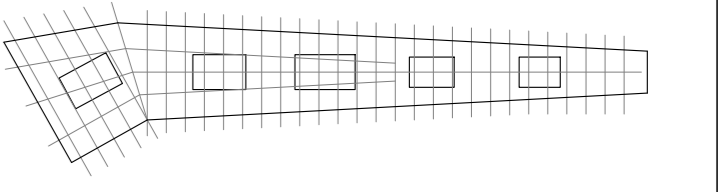
- KXC-A-001-A-BDP-27-50026
- KXC-A-001-A-BDP-27-50040
- KXC-A-001-A-BDP-27-50006
- KXC-A-001-A-BDP-31-50001

Allow for concealed containment

T03	Updated as indicated: CRP 915	HT	AE	04.10.19
T02	Stage 4 Update Tender Issue	FM	JE	15.12.17
T01	Stage 4 Issue	FM	JE	29.09.17



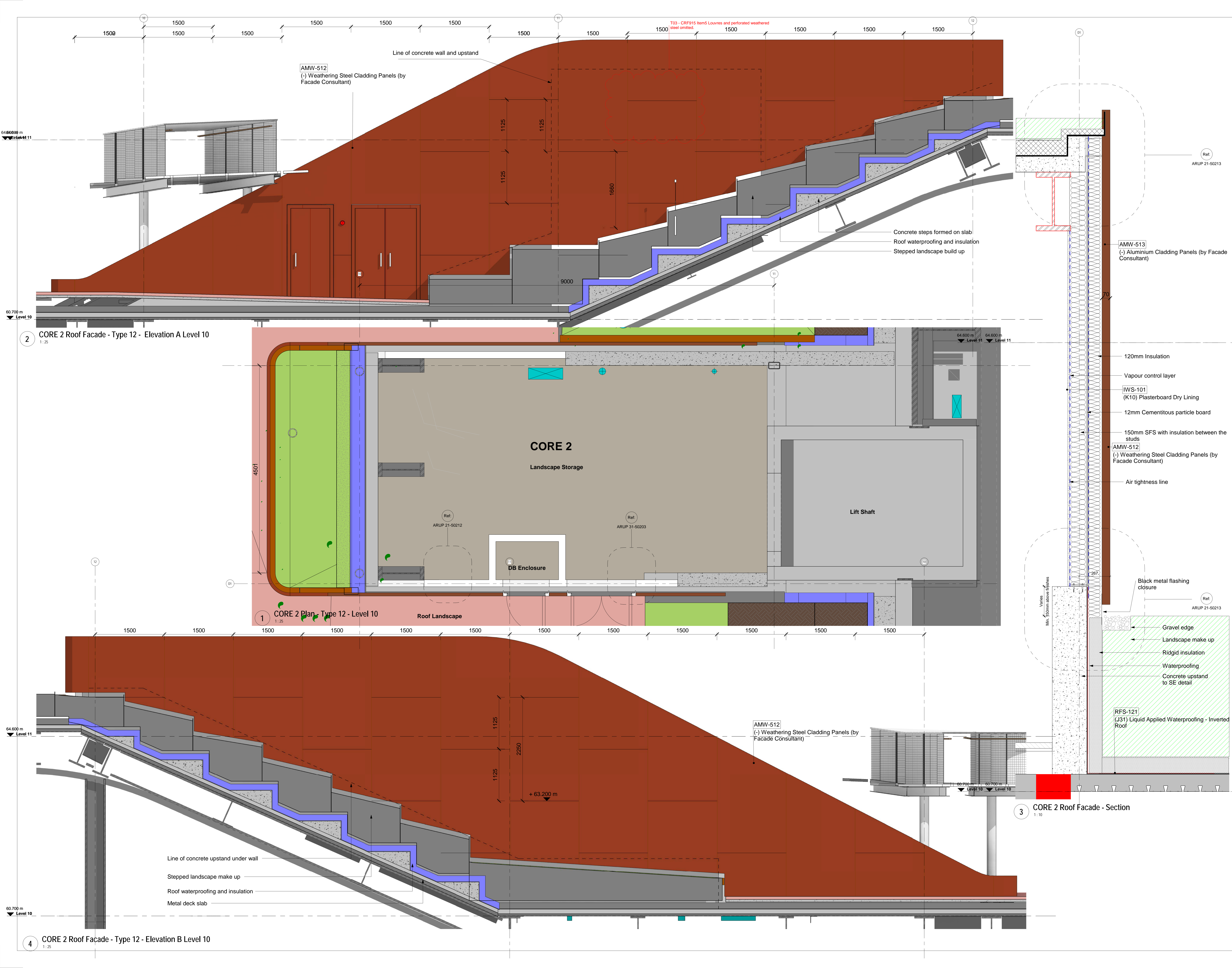
16 Brewhouse Yard
Clarkinwell
London
EC1V 4LJ
United Kingdom
T +44 (0)20 7812 8000
www.bdp.com



FOR TENDER

Cladding Details - Roof Facade - Type 12 Metal Cladding - Core 2

06/09/17
P2007133
As indicated
AD
DC
JE
KXC-A-001-A-BDP-21-50155 T03



2 CORE 2 Roof Facade - Type 12 - Elevation A Level 10
1:25

1 CORE 2 Plan - Type 12 - Level 10
1:25

3 CORE 2 Roof Facade - Section
1:10

4 CORE 2 Roof Facade - Type 12 - Elevation B Level 10
1:25