

Studio House



Front of garage



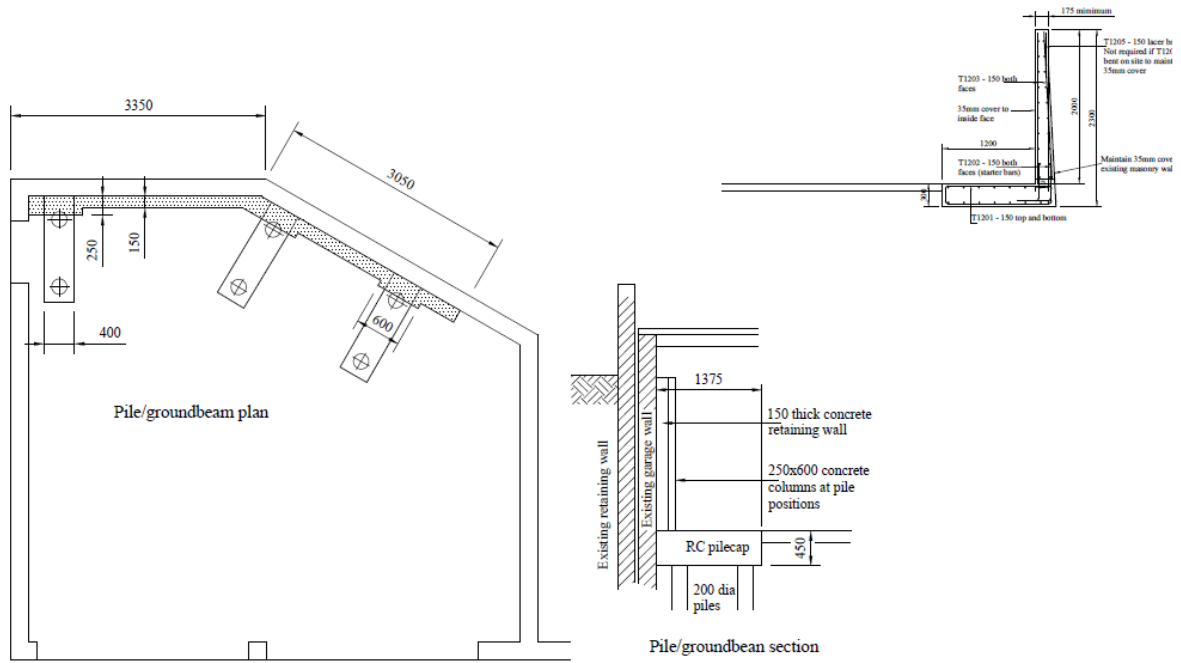
Typical damage to rear wall of garage



Typical damage to garage



View of neighbour's wall – note the remoteness of the neighbour's retaining wall to the left side wall of the garage.



Plan and sections of the retaining wall. The substantial part of the sketch shows the original piled arrangement; that at the top right of the sketch is the as-built arrangement.