

## TREE PLANTING SPECIFICATION

45 Lancaster Grove \_Rear Eastern Boundary



### SITE

45 Lancaster Grove  
London  
NW3

### PLANTING SITE SUMMARY

- (i) Rear eastern boundary

### TREE PLANTING SPECIFICATION

- (i) All trees to be supplied as minimum 12-14cm heavy standard specimen / 1.8m clear stem pleach with minimum 1.2m height head
- (ii) All trees to be planted within location shown within drawing L001
- (iii) Irrigation pipes to be Platipus Pidler irrigation pipe
- (iv) Suitable staking implemented as part of the scheme: - subject to planting pit detail
- (v) A weed suppressing bark mulch between 40-60mm thickness applied
- (vi) The tree planting should be accompanied with a strict watering programme for the first full season after planting

### PROPOSAL

To plant the following within location shown within drawing L001

*Ilex meserveae* 'Nellie Stevens' x 6  
PLEACHED 10/12 1.8m Stem 120h x 120w Wood Frame

## TREE PLANTING SPECIFICATION

45 Lancaster Grove \_Rear Eastern Boundary



### SPECIES SELECTION

Nelly Stevens Holly

*Ilex meserveae* 'Nellie Stevens'

Dense growing variety with smooth, dark green, glossy leaves often up to 7.5cms long. Female clone producing large crops of orange-red fruits. Versatile variety which can be grown as bush or small tree

Tree planting as part of a wider landscape scheme to provide screening from



# TREE PLANTING SPECIFICATION

45 Lancaster Grove \_Rear Eastern Boundary



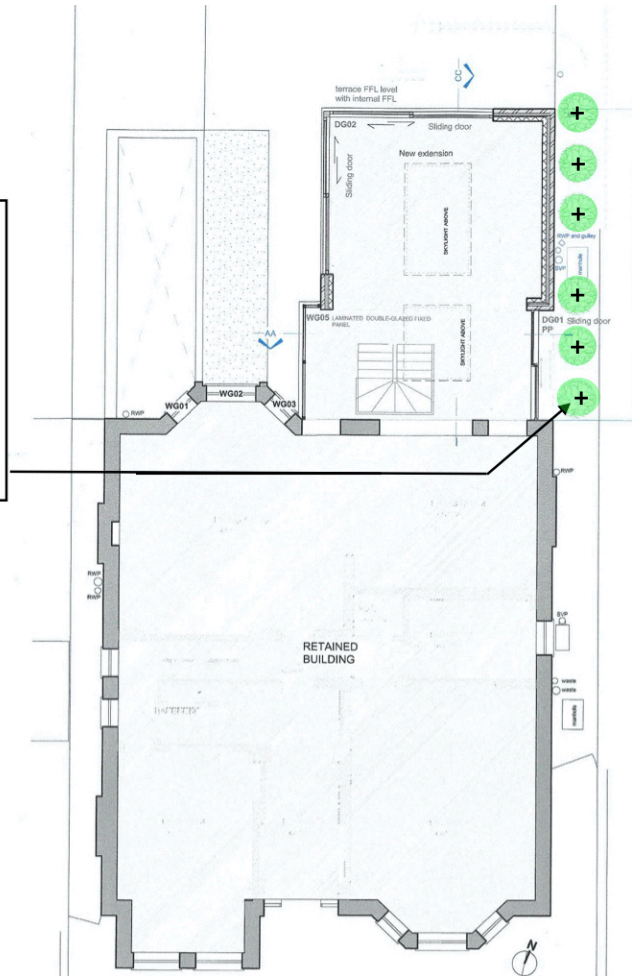
## DWG L001 LANDSCAPE PLAN

TREE PLANTING - 45 LANCATER GROVE, LONDON, NW3

**Ilex meserveae 'Nellie Stevens' x 6**  
**PLEACHED 10/12 1.8m Stem 120h x 120w Wood Frame**

**Planted to the following specifications:**

- (i) Irrigation pipes to be Platipus Pidler irrigation pipe
- (ii) Suitable staking implemented as part of the scheme: - subject to planting pit detail
- (iii) A weed suppressing bark mulch between 40-60mm thickness applied
- (iv) The tree planting should be accompanied with a strict watering programme for the first full season after planting
- (v) Any tree which dies within the first 5 years of planting shall be replaced within the same location



Do not scale from this drawing

**PREPARED BY M FOSTER**  
**JANUARY 2021**