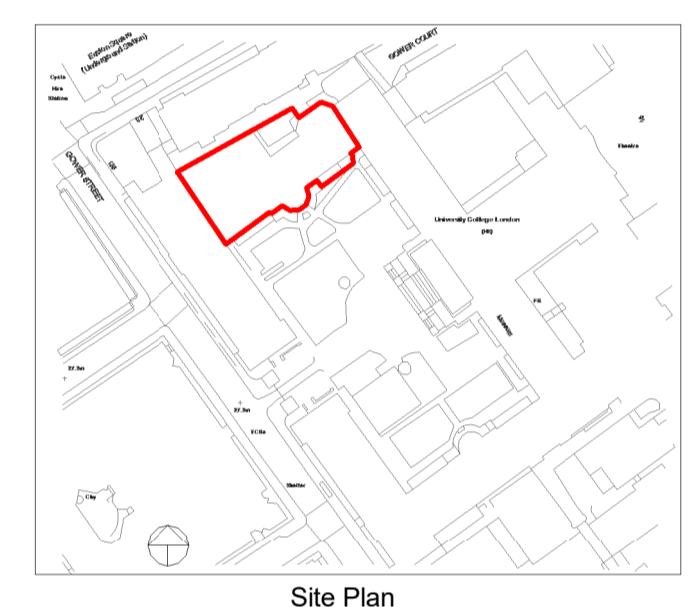


- NOTES**
- THIS IS A PRE APPLICATION INFORMATION DRAWING AND SHALL NOT BE USED FOR CONSTRUCTION OR INSTALLATION PURPOSES.
 - DO NOT SCALE OFF THIS DRAWING.
 - ALL DIMENSIONS TO BE VERIFIED ON SITE BEFORE COMPLETING SHOP DRAWINGS AND SETTING OUT WORK
 - THIS DRAWING SHALL BE READ IN CONJUNCTION WITH THE TECHNICAL SPECIFICATION AND ASSOCIATED EQUIPMENT SCHEDULES.
 - FOR FIRE COMPARTMENTATION DETAILS SEE DRAWING: SP08
 - FOR BRACKET FIXING DETAILS SEE DRAWING: SP07
 - PIPE HEIGHTS REFERENCE FINISHED FLOOR LEVEL
 - BRACKET TYPE & LOCATION TO BE SPECIFIED ON SITE

- LEGEND:**
- SPRINKLER PIPEWORK
 - SPRINKLER - PENDANT
 - SPRINKLER - HORIZONTAL SIDE WALL
 - SPRINKLER - CUT OFF HEAD
 - SENSITIVE AREAS
 - WALL PIPE PENETRATION AREAS
 - SLAB/FLOOR PIPE FROM FLOOR BELOW PENETRATION AREAS
 - CLAMPED SINGLE BRACKET PIPE SUPPORT
 - CLAMPED DOUBLE BRACKET PIPE SUPPORT
 - DRILLED SINGLE BRACKET PIPE SUPPORT
 - DRILLED DOUBLE BRACKET PIPE SUPPORT
 - SPRINKLER PIPEWORK CONNECTS TO MEZZANINE



Revision			
Rev	Date	Description	App'd
T1	09.07.20	TENDER ISSUE	SD SD

Client	
--------	--



Building Services & Fire Engineering Consultants

OSBORN ASSOCIATES

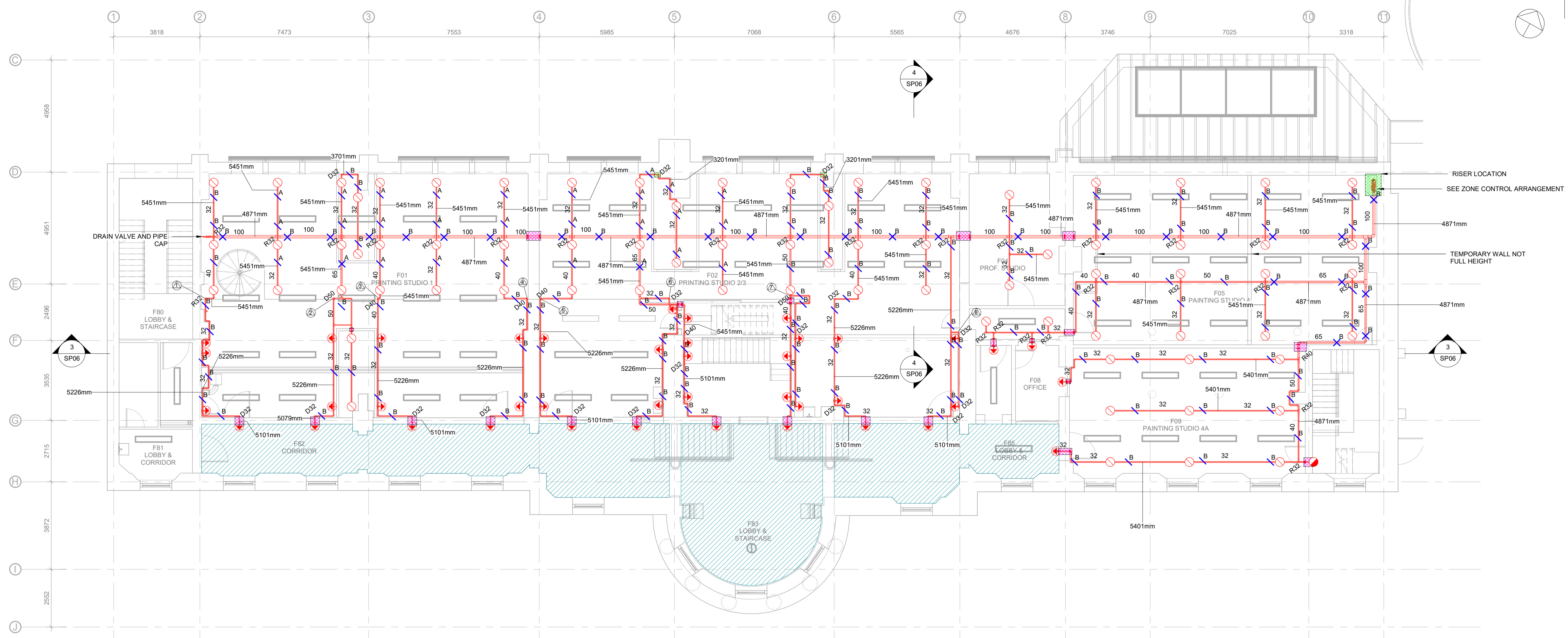
Osborn Associates Ltd
South Barn, Crockham Park,
Crockham Hill, Edenbridge,
Kent, TN8 6SR
England

TEL: +44 (0)1732 860460
www.osbornassociates.co.uk

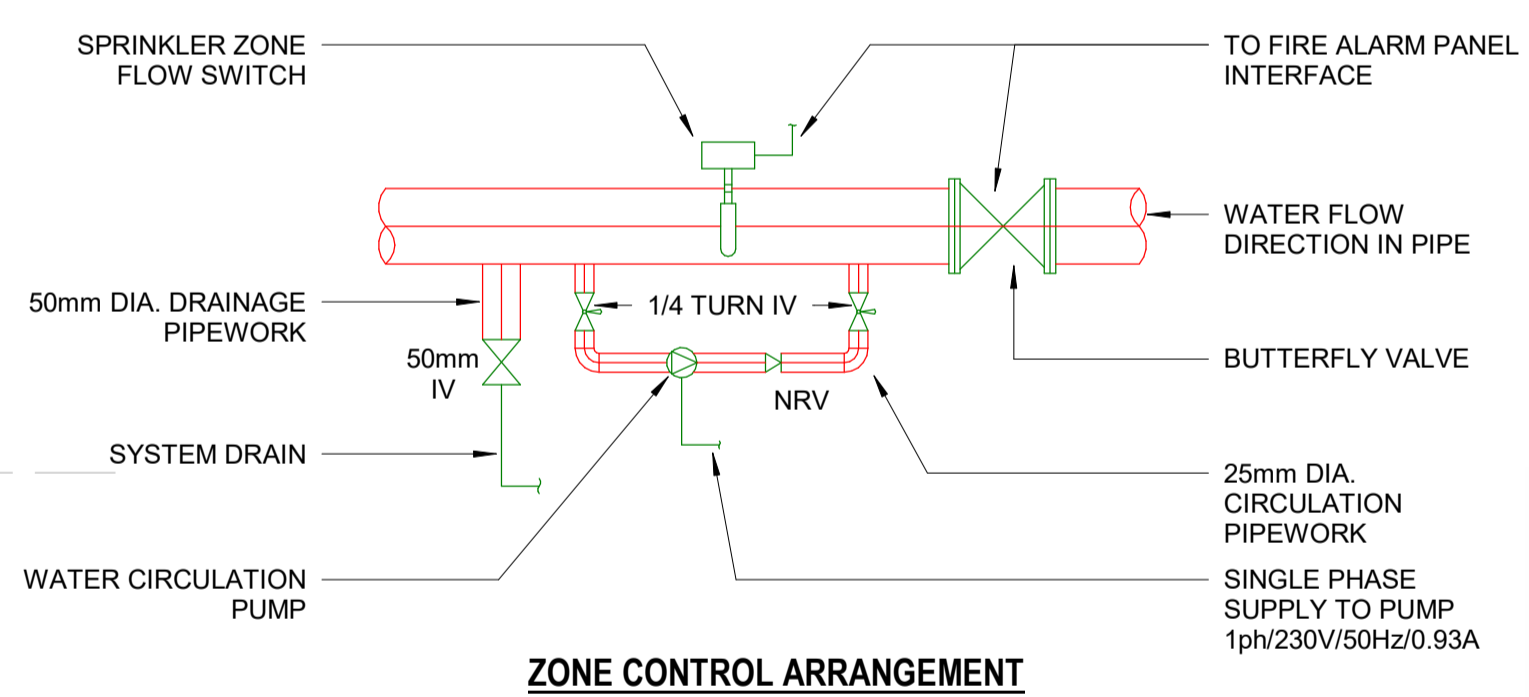
Project
**UNIVERSITY COLLEGE LONDON
SLADE SCHOOL OF ART
SPRINKLER INSTALLATION**

Drawing
**FIRST FLOOR &
FIRST MEZZANINE FLOOR
SPRINKLER LAYOUT**

Scale	As indicated	CAD Ref.	C:\OS\p\Files\Osborn\1955-1959\1955
Drawn	HS	Chk'd/App'd	SD/SD
Job No.	1955	Dwg No.	SP03
		Date	JULY.20
		Rev	T1



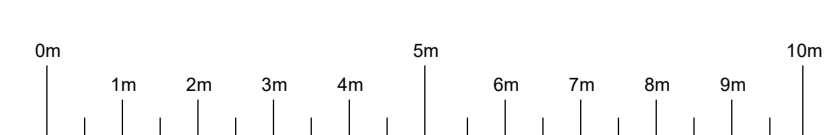
1 First Floor Sprinkler Layout
1:100



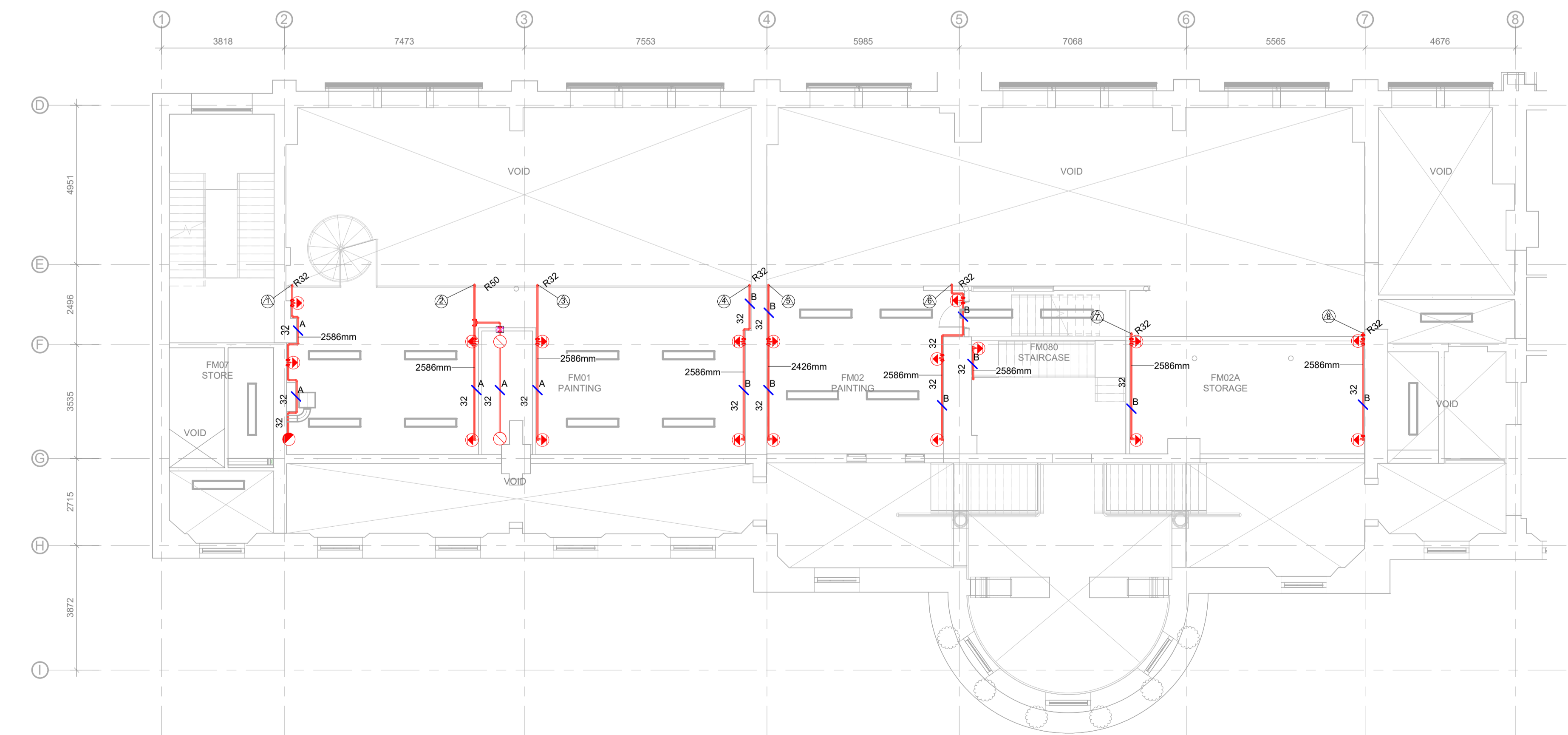
DESIGN CRITERIA TABLE	
HAZARD CLASSIFICATION	BS EN 12845 : 2015
HAZARD CLASSIFICATION	ORDINARY HAZARD 3 (OH3)
PROTECTION	PROPERTY
AREA OF OPERATION	216m²
DESIGN DENSITY	5mm/m in
WATER SUPPLY DURATION	60 minutes
ALL SIGNALS MONITORED	YES
MAXIMUM PROTECTION AREA PER SPRINKLER	12m²
SPRINKLER K FACTOR	K80
SPRINKLER ORIFICE	15mm
SPRINKLER SYSTEM TYPE	WET SYSTEM

PIPEWORK DETAILS							
BS EN 10255 MEDIUM WEIGHT							
SPEC. & DIA. (mm)	25	32	40	50	65	80	100
BORE (mm)	27.2	35.9	41.8	53.0	68.8	80.8	105.3
OUTSIDE DIA. (mm)	33.7	42.4	48.3	60.3	76.1	88.9	114.3
WEIGHT kg/M (DRY)	2.46	3.17	3.65	5.17	6.63	8.64	12.4
WEIGHT kg/M (WET)	3.04	4.18	5.02	7.37	10.35	13.77	21.11
VELOCITY @ 1000L/M (M/S)	28.3	16.3	12.0	7.5	4.4	3.2	1.9

PAINTED - RED OXIDE	<input type="checkbox"/>	GALVANISED	<input type="checkbox"/>
PAINTED - WHITE GLOSS	<input type="checkbox"/>	POWDER COAT - WHITE	<input type="checkbox"/>
PAINTED - RED GLOSS	<input type="checkbox"/>	POWDER COAT - RED	<input type="checkbox"/>
CLIENT SPECIFICATION	<input checked="" type="checkbox"/>	OTHER - SEE DRG.	<input type="checkbox"/>



SCALE 1:100 @ A1



2 First Mezz Sprinkler Layout
1:100