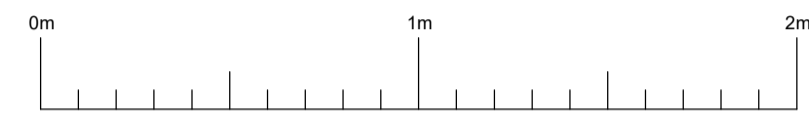


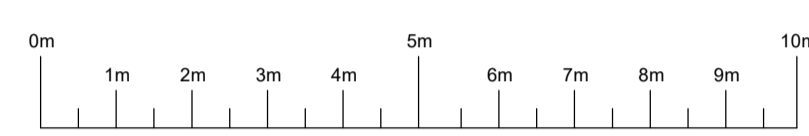
PIPEWORK DETAILS								
BS EN 10255 MEDIUM WEIGHT								
SPEC. & DIA. (mm)	25	32	40	50	65	80	100	150
BORE (mm)	27.2	35.9	41.8	53.0	68.8	80.8	105.3	155.4
OUTSIDE DIA. (mm)	33.7	42.4	48.3	60.3	76.1	88.9	114.3	165.1
WEIGHT kg/M (DRY)	2.46	3.17	3.65	5.17	6.63	8.64	12.4	19.8
WEIGHT kg/M (WET)	3.04	4.18	5.02	7.37	10.35	13.77	21.11	38.77
VELOCITY @ 1000L/M (M/S)	28.3	16.3	12.0	7.5	4.4	3.2	1.9	0.9

PIPEWORK DETAILS			
PAINTED - RED OXIDE	<input type="checkbox"/>	GALVANISED	<input type="checkbox"/>
PAINTED - WHITE GLOSS	<input type="checkbox"/>	POWDER COAT - WHITE	<input type="checkbox"/>
PAINTED - RED GLOSS	<input type="checkbox"/>	POWDER COAT - RED	<input type="checkbox"/>
CLIENT SPECIFICATION	<input checked="" type="checkbox"/>	OTHER - SEE DRG.	<input type="checkbox"/>

DESIGN CRITERIA TABLE	
HAZARD CLASSIFICATION	BS EN 12845 : 2015
HAZARD CLASSIFICATION	ORDINARY HAZARD 3 (OH3)
PROTECTION	PROPERTY
AREA OF OPERATION	216m ²
DESIGN DENSITY	5mm/m in
WATER SUPPLY DURATION	60 minutes
ALL SIGNALS MONITORED	YES
MAXIMUM PROTECTION AREA PER SPRINKLER	12m ²
SPRINKLER K FACTOR	K80
SPRINKLER ORIFICE	15mm
SPRINKLER SYSTEM TYPE	WET SYSTEM

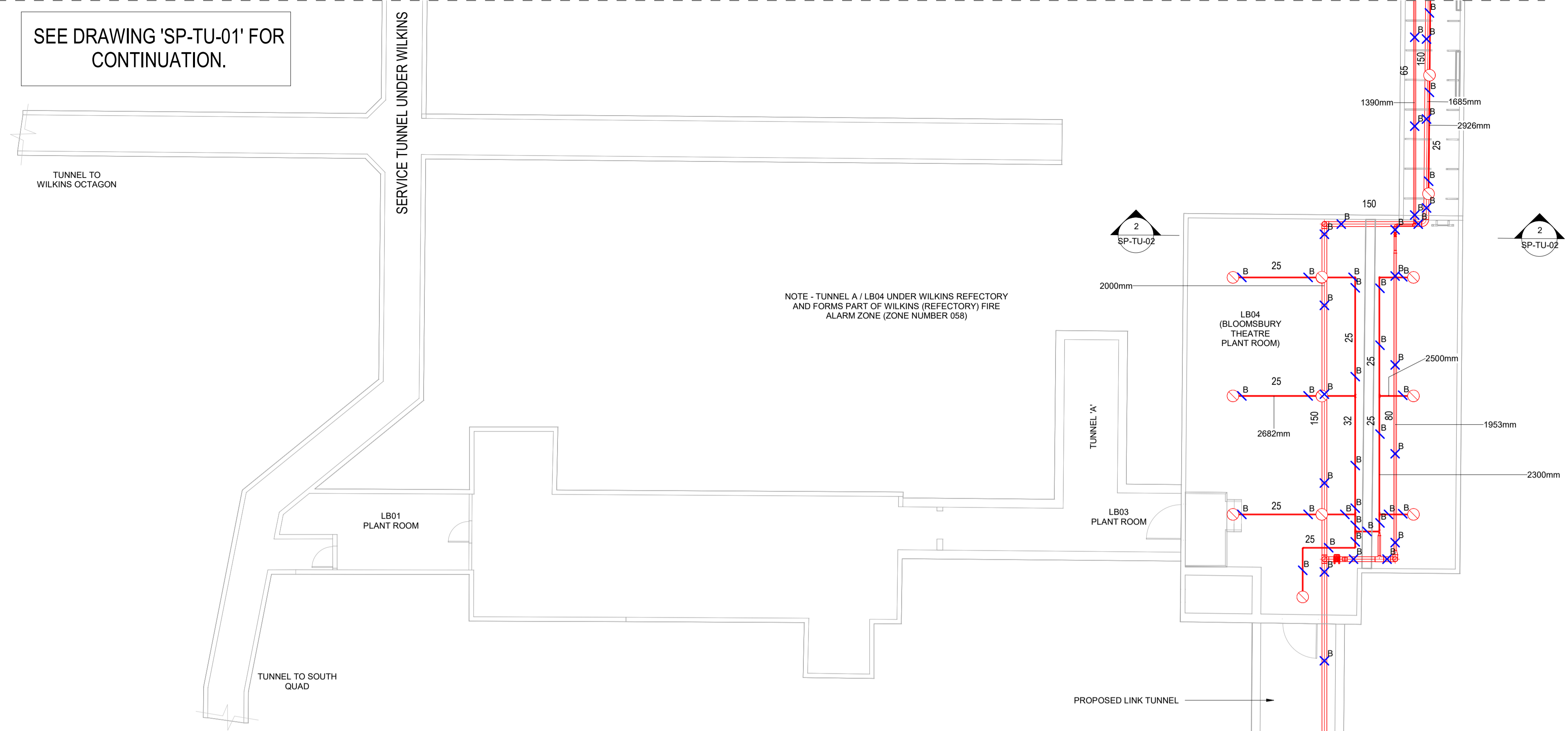


SCALE 1:20 @ A1



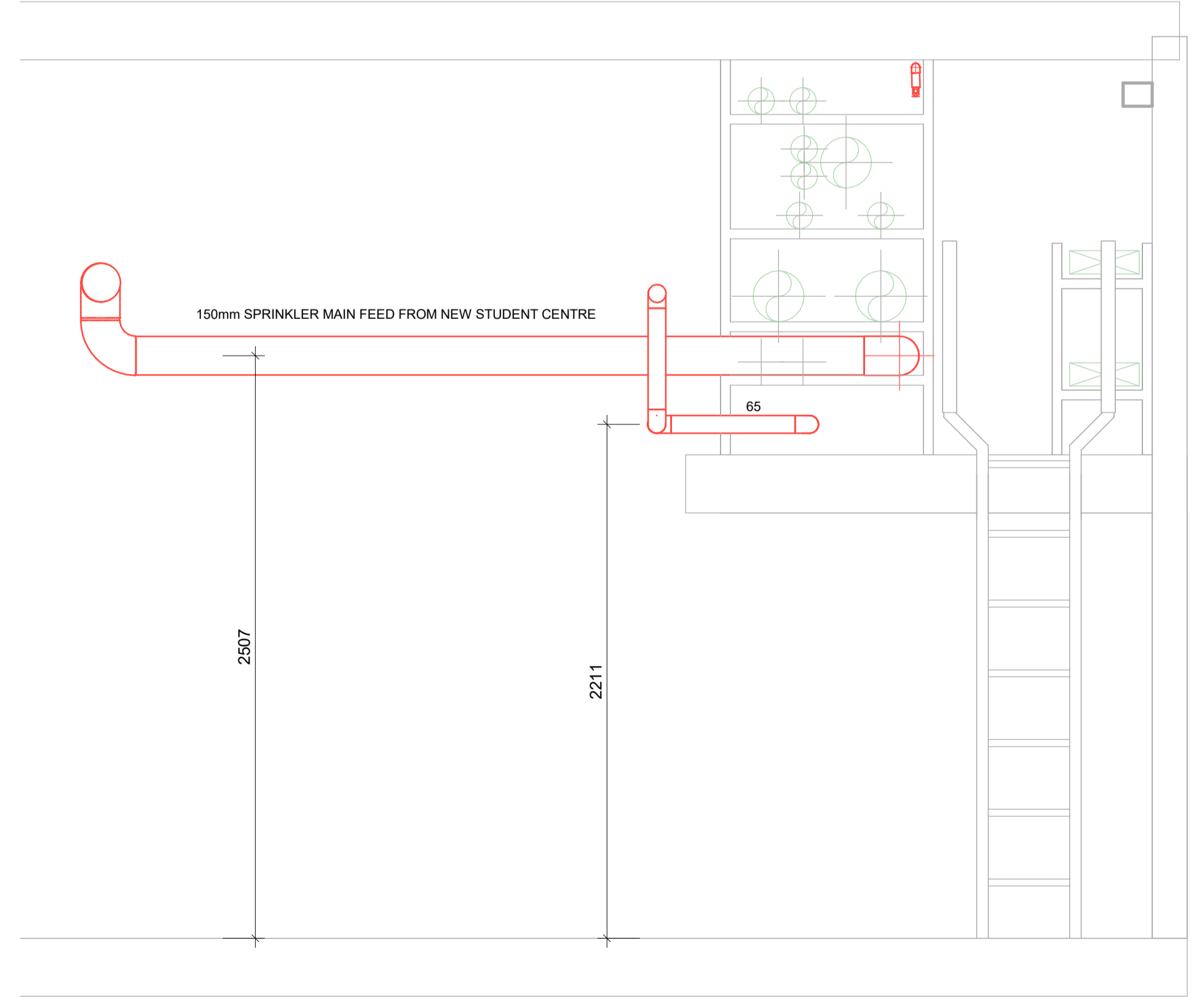
SCALE 1:100 @ A1

SEE DRAWING 'SP-TU-01' FOR CONTINUATION.

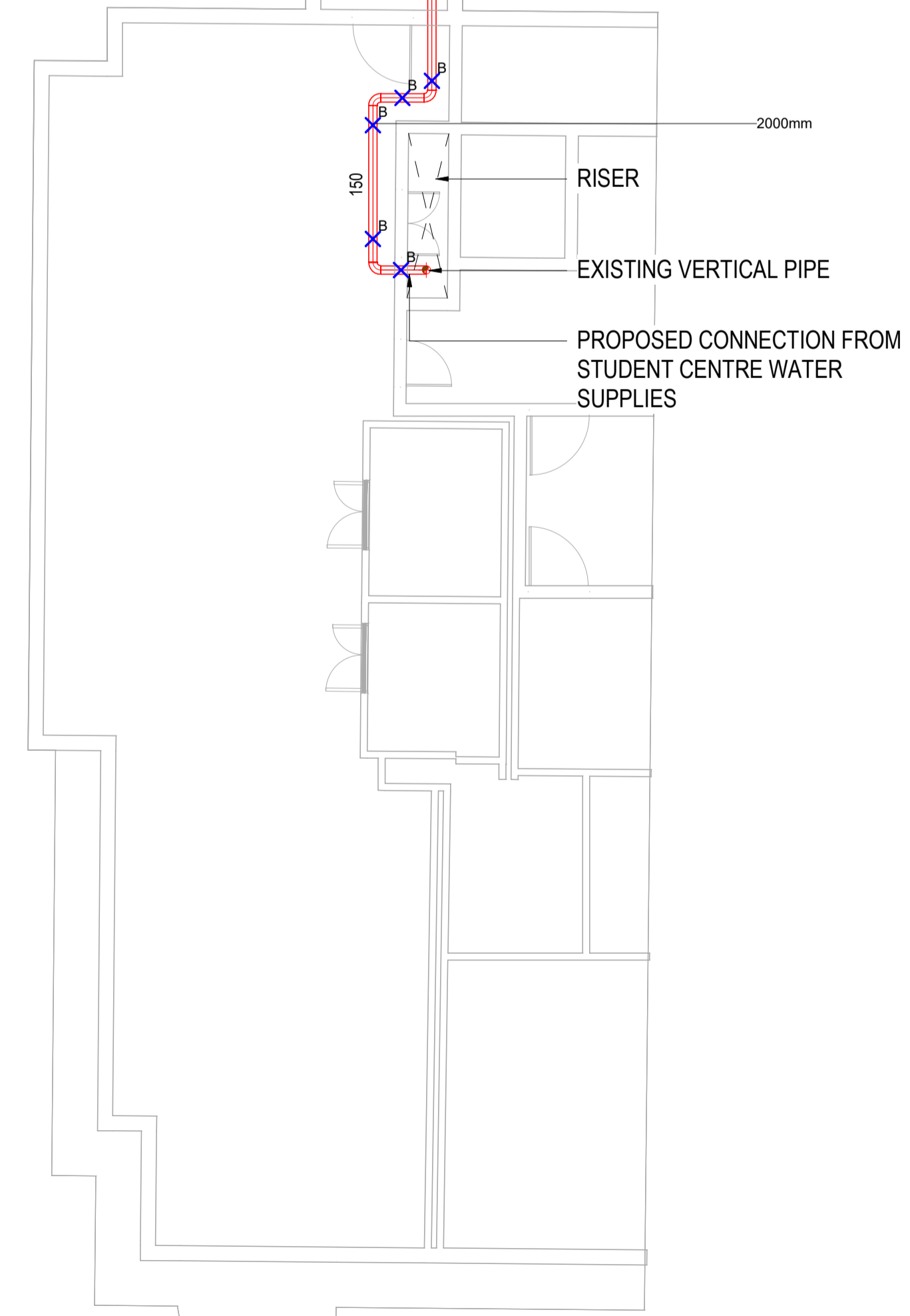


NOTE - TUNNEL A / LB04 UNDER WILKINS REFECTORY AND FORMS PART OF WILKINS (REFECTORY) FIRE ALARM ZONE (ZONE NUMBER 058)

1 Tunnels & Switchrooms Sprinkler Route 2
1 : 100



2 Tunnel Section
1 : 20



- NOTES
- THIS IS A PRE APPLICATION INFORMATION DRAWING AND SHALL NOT BE USED FOR CONSTRUCTION OR INSTALLATION PURPOSES. DO NOT SCALE OFF THIS DRAWING.
 - ALL DIMENSIONS TO BE VERIFIED ON SITE BEFORE COMPLETING SHOP DRAWINGS AND SETTING OUT WORK
 - THIS DRAWING SHALL BE READ IN CONJUNCTION WITH THE TECHNICAL SPECIFICATION AND ASSOCIATED EQUIPMENT SCHEDULES
 - FOR FIRE COMPARTMENTATION DETAILS SEE DRAWING: SP08
 - FOR BRACKET FIXING DETAILS SEE DRAWING: SP07
 - PIPE HEIGHTS REFERENCE FINISHED FLOOR LEVEL

- LEGEND:
- SPRINKLER PIPEWORK
 - SPRINKLER - PENDANT
 - SPRINKLER - UPRIGHT PENDANT
 - SPRINKLER - CEILING PENDANT
 - SPRINKLER - CANDLE STICK PENDANT
 - SPRINKLER - HORIZONTAL SIDE WALL
 - SPRINKLER - CUT OFF HEAD
 - SENSITIVE AREAS
 - WALL PIPE PENETRATION AREAS
 - SLAB/FLOOR PIPE FROM FLOOR BELOW PENETRATION AREAS
 - CLAMPED SINGLE BRACKET PIPE SUPPORT
 - CLAMPED DOUBLE BRACKET PIPE SUPPORT
 - DRILLED SINGLE BRACKET PIPE SUPPORT
 - DRILLED DOUBLE BRACKET PIPE SUPPORT

Revision				

Rev	Date	Description	Chk'd	App'd
T1	09.07.20	TENDER ISSUE	SD	SD



Building Services & Fire Engineering Cosultants

Osborn Associates Ltd
South Barn, Crockham Park,
Crockham Hill, Edenbridge,
Kent, TN8 6SR
England

OSBORN associates

TEL: +44 (0)1732 860460
www.osbornassociates.co.uk

Project
**UNIVERSITY COLLEGE LONDON
SLADE SCHOOL OF ART
SPRINKLER INSTALLATION**

Drawing
**TUNNELS & SWITCHROOMS
SPRINKLER PIPEWORK
SHEET 2 OF 2**

Scale @ A1	As indicated	CAD Ref. File Path	C:\OSB\Files\Osborn\1955-1959\1955 UCL Slade School of Art Drawings
Drawn	HS	Chk'd/App'd	SD/SD
Job No.	1955	Date	JULY.20
Drg No.	SP-TU-02	Rev	T1