

# SOUTH HAMPSTEAD SYNAGOGUE

## Application for retractable awning at terrace level

### Pre Application Information

Allies and Morrison Architects, December 2020



Site Location Plan 1:1250



South Hampstead Synagogue from Eton Road looking north

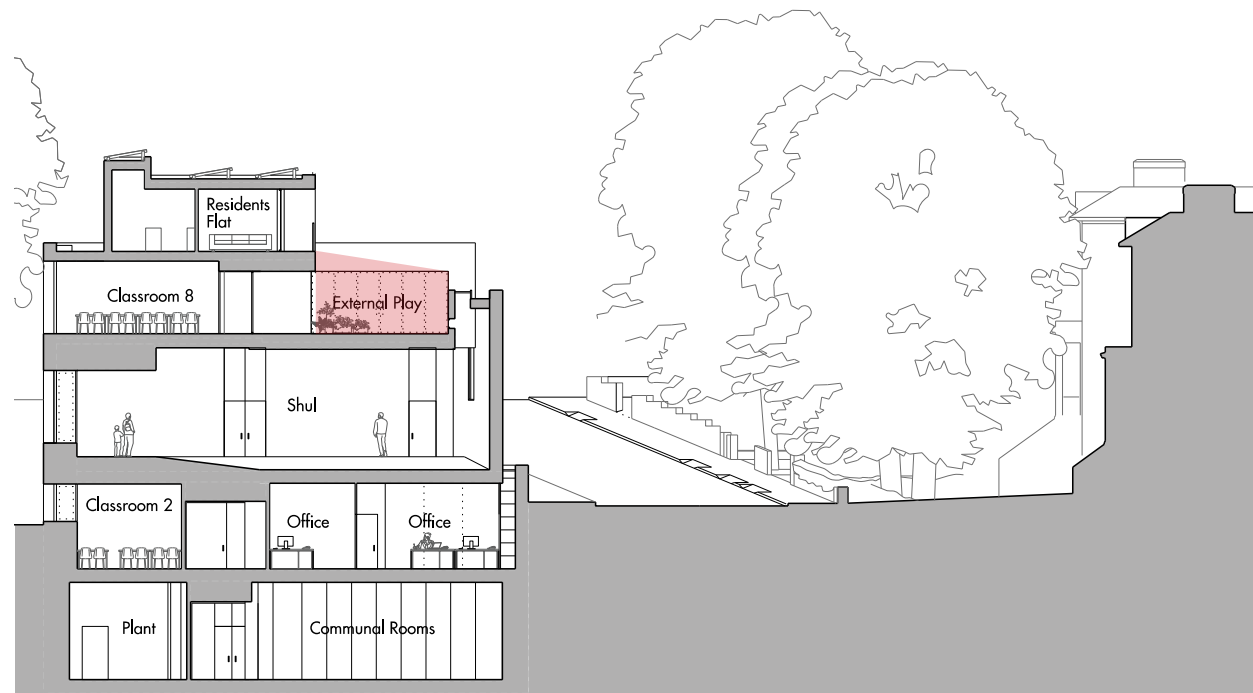


South Hampstead Synagogue at night

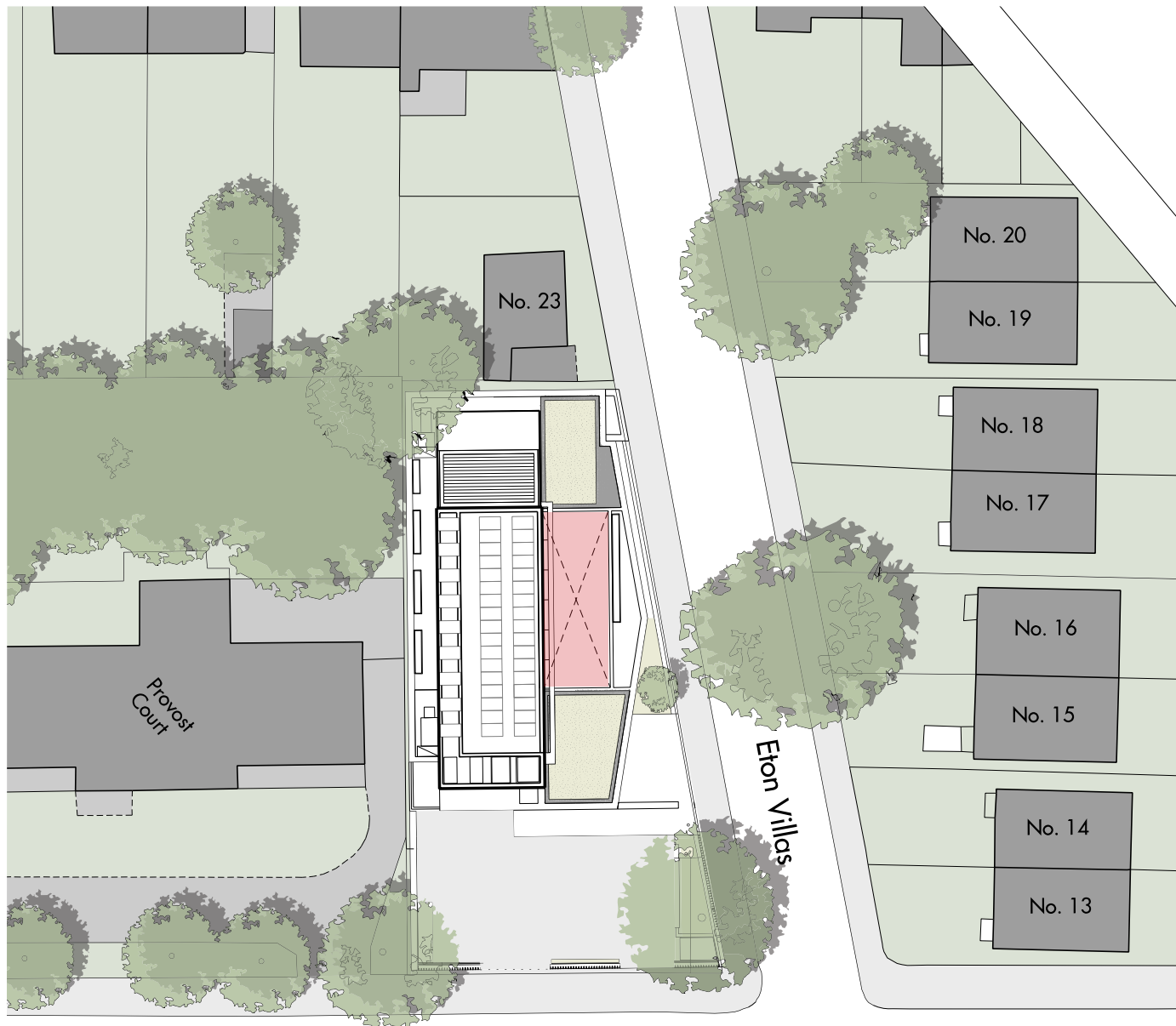


Neighbouring Eton Villas from Eton Road





Cross Section - showing proposed location of awning in red



Site Plan - showing proposed location of awning in red

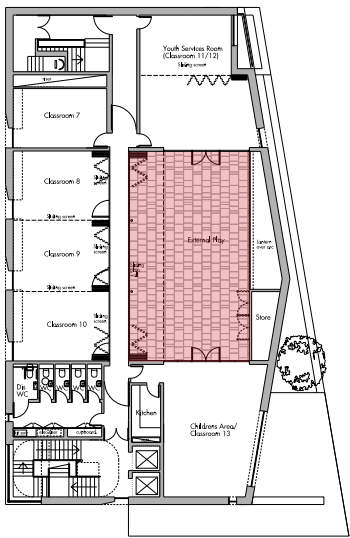
# The Proposed Awning

Members of the synagogue would like to add a retractable fabric awning at terrace level on the new building.

The structure will comprise a bronze metal frame which will be covered by a retractable fabric awning. It is proposed that the awning will cover the external roof terrace which faces onto Eton Road. It is proposed that the new awning and frame are screened with new planting located on the wide parapet.

The awning will also be used to cover a succah which will be erected on the terrace for the week long Jewish holiday of Sukkot. A succah has an open roof which needs to be covered from the elements when not in use during the festival.

The drawings here show the proposed location of the awning. Drawings on the following pages show detailed proposals for its design



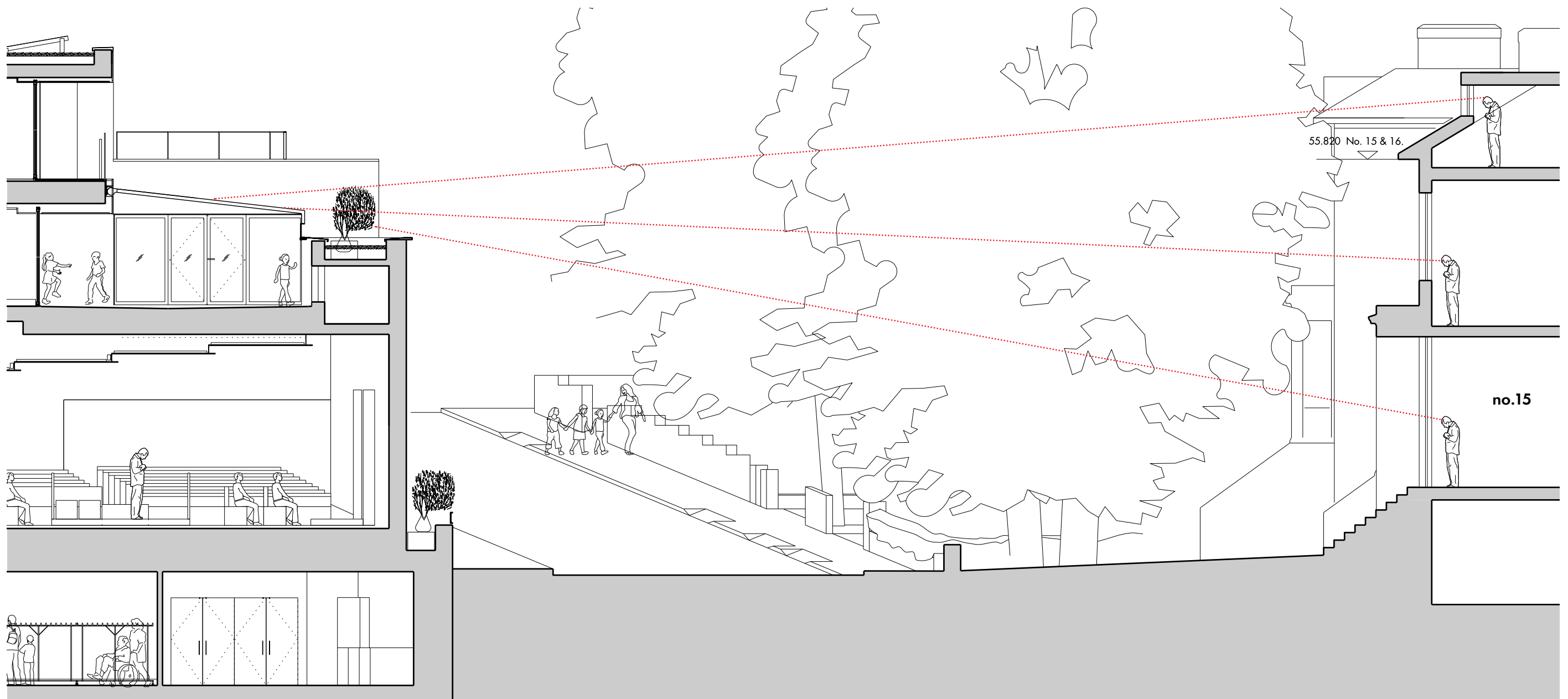
South Hampstead Synagogue Terrace



South Hampstead Synagogue Terrace



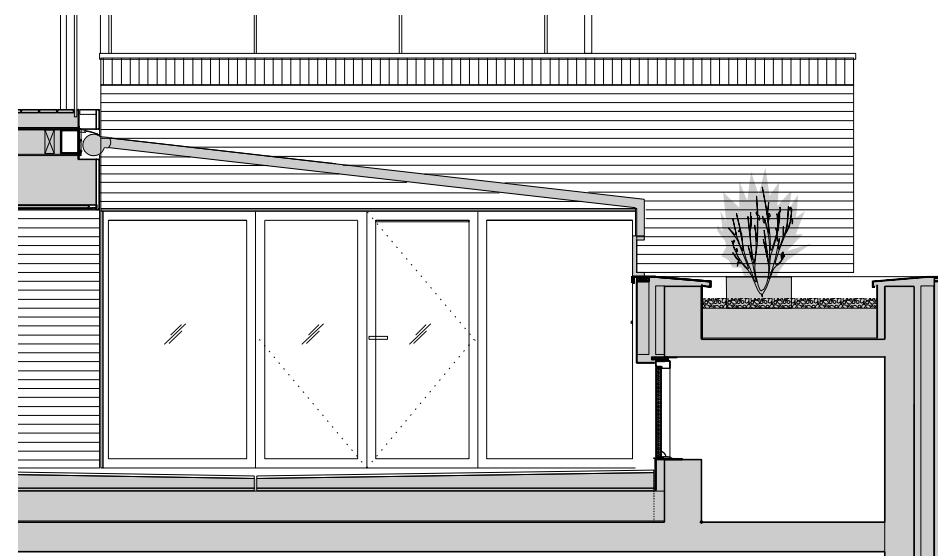
South Hampstead Synagogue from Eton Road looking south



Cross Section through Eton Villas, cutting through villas 15&16 (F-F heights in Eton Villa's are approximate)



No 14 - 13 Eton Villas from front



Synagogue terrace and awning section in detail

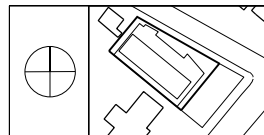
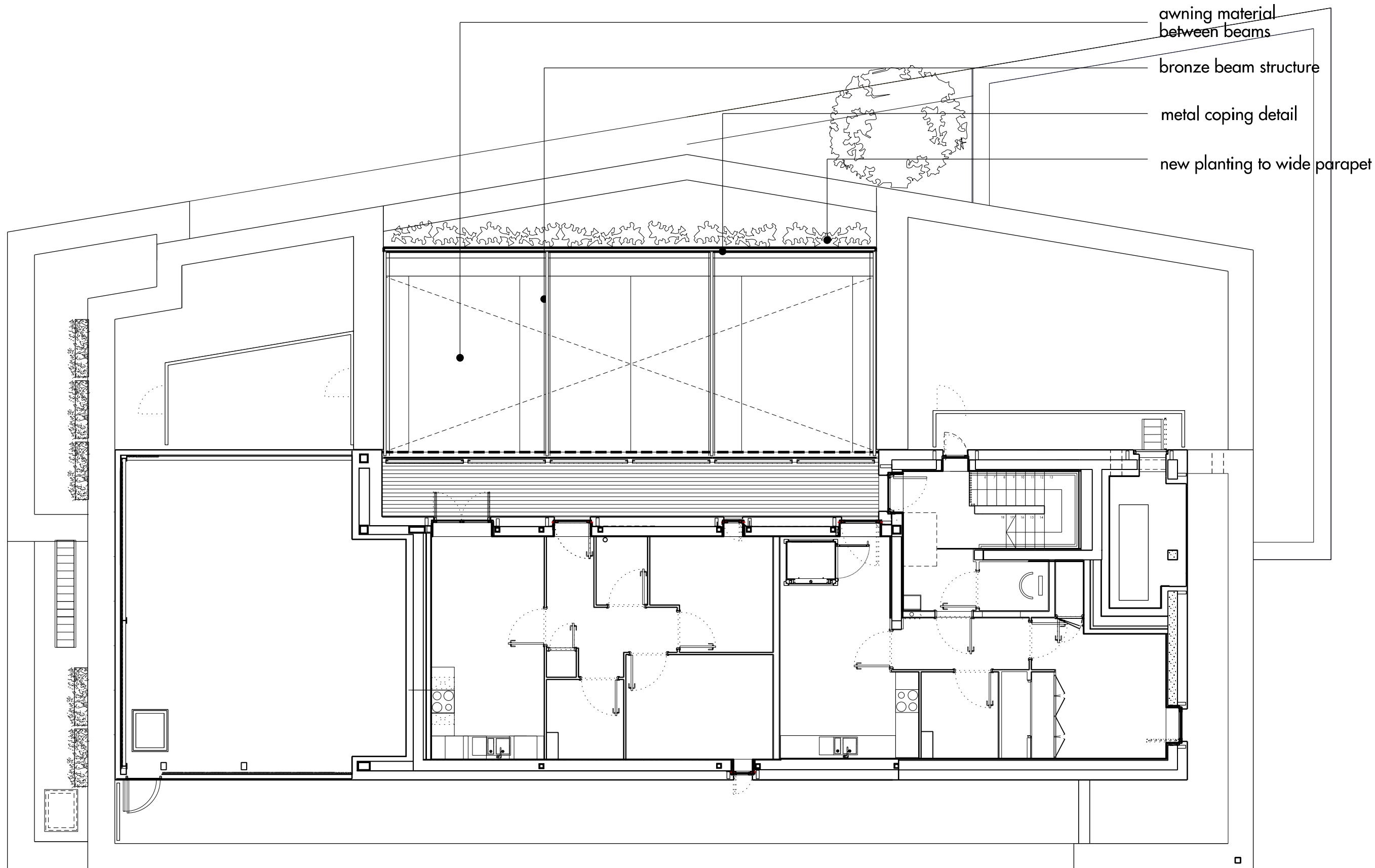
## The view from neighbouring properties

The terrace location is directly opposite no's 15-18 Eton Villas.

The cross section above shows that due to the synagogue's parapet upstand and the set back of the terrace, the awning will not be visible from street level or ground floor level of the adjacent houses.

Where it can be seen from first floor, it is proposed that it will be screened with new planting.





Do not scale from this drawing. Use figured dimensions only. Figured dimensions are in millimetres. All levels are in metres. All dimensions and levels shall be verified on the building project with works. Detailed site survey to be carried out to verify positions and level relationships with the building and landscape survey. The Architect must be notified of any discrepancy. Where building components are described in the specification as Descriptive Specification - (Contractor Design) elements shown on this drawing pertaining to those components are to be read as 'Issued for Design Intent only'.

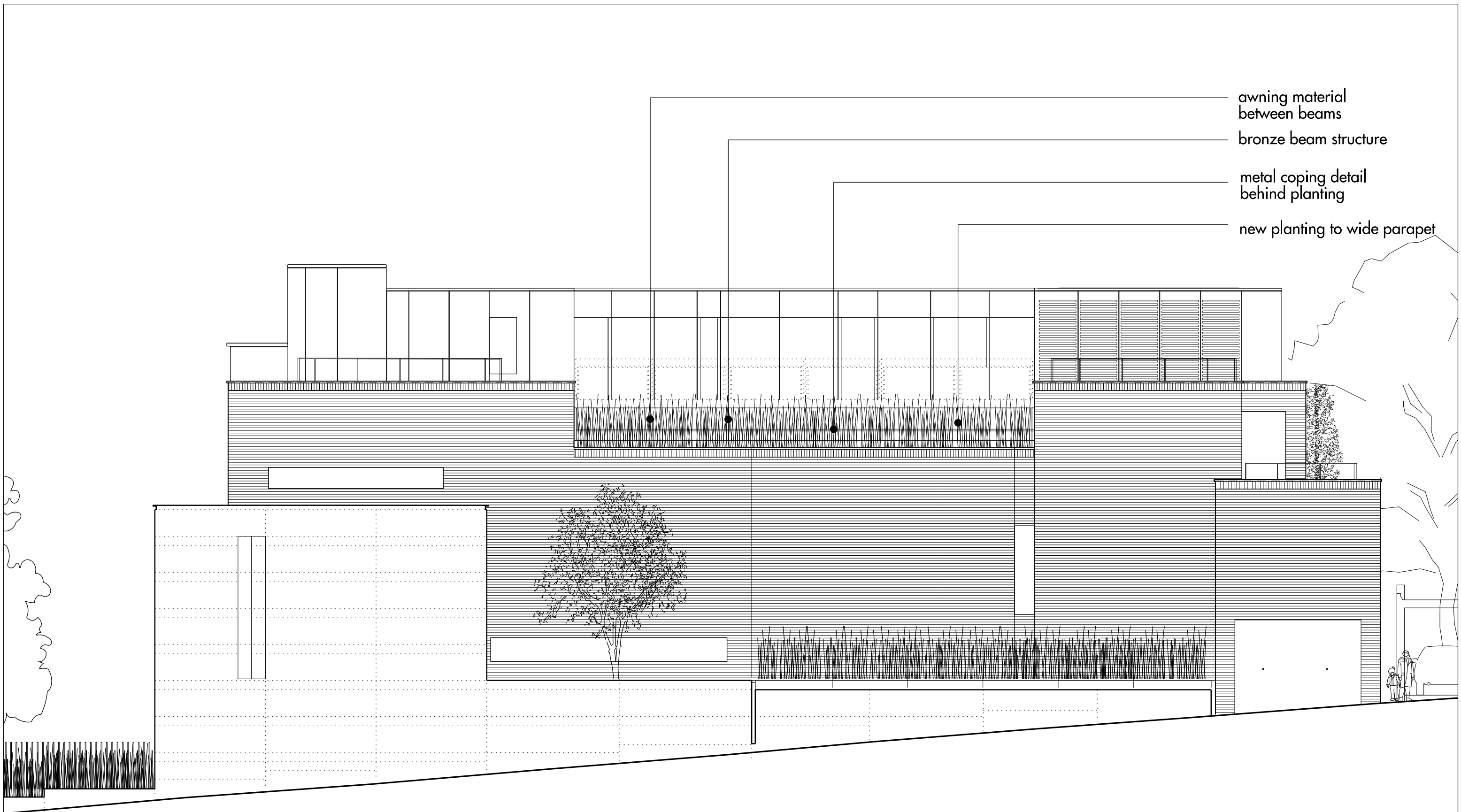
Allies & Morrison is not responsible for any errors caused by the transmission, translation, software or computer systems. Allies & Morrison is not responsible for nor shall be liable for the consequences of any use made of the drawings or models other than that for which they were produced by Allies & Morrison for the Client.

REV	DATE	DESCRIPTION	OKD	REV	DATE	DESCRIPTION	OKD

Allies and Morrison  
 85 Southwark Street  
 London SE1 0HX  
 telephone 020 7921 0100  
 facsimile 020 7921 0101  
 email info@alliesandmorrison.com  
 A&M JOB NO: 882

SOUTH HAMPSTEAD SYNAGOGUE  
 Awning sketch  
 plan  
 882\_SK\_193\_Awning

Revision

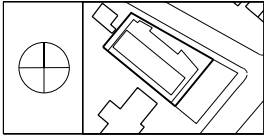


awning material  
between beams

bronze beam structure

metal coping detail  
behind planting

new planting to wide parapet



Do not scale from this drawing. Use figured dimensions only. Figured dimensions are in millimetres. All levels are in metres. All dimensions and levels shall be verified on the before proceeding with works. Detailed site survey to be carried out to verify positions and level relationships with the building and landscape survey. The Architect must be notified of any discrepancy. Where building components are described in the specification as Descriptive Specification - (Contractor Design) elements shown on this drawing pertaining to those components are to be read as 'Issued for Design Intent only'.

Allies and Morrison is not responsible for any errors caused by the transmission, translation, software or computer systems. Allies and Morrison is not responsible for nor shall be liable for the consequences of any use made of the drawings or models other than that for which they were produced by Allies and Morrison for the Client.

REV	DATE	DESCRIPTION	OKD	REV	DATE	DESCRIPTION	OKD

Allies and Morrison  
85 Southwark Street  
London SE1 0HX  
telephone 020 7921 0100  
facsimile 020 7921 0101  
email info@alliesandmorrison.com  
A&M JOB NO: 882

SOUTH HAMPSTEAD SYNAGOGUE  
Awning sketch  
elevation  
882\_SK\_192\_Awning

Revision